

FOR LEASE

151 STEWART ROAD SW

PACIFIC, WA 98047



PROPERTY INFORMATION

- + Lease Rate: \$20.00 PSF (per year), NNN
- + Utilities:
 - Sewer - City of Pacific
 - Power - Puget Sound Energy
- + HVAC - heat pump
- + 90,000 VPD
- + Located just off Hwy 167 at Stewart Rd SW (8th Ave St E)
- + Lease all or individual buildings
- + Adjacent ± 2.53 acres available for lease
- + Zoning: Commercial/Light Industrial with MIC Overlay, City of Pacific



CONTACT US

TERESA PATTON

Team Leader
+1 253 596 0043
teresa.patton@cbre.com

DON MOODY

First Vice President
+1 253 596 0045
don.moody@cbre.com

CBRE, INC

1201 Pacific Avenue
Suite 1502
Tacoma, WA 98402

www.cbre.us/lsgseattle

CBRE

FOR LEASE

151 STEWART ROAD SW

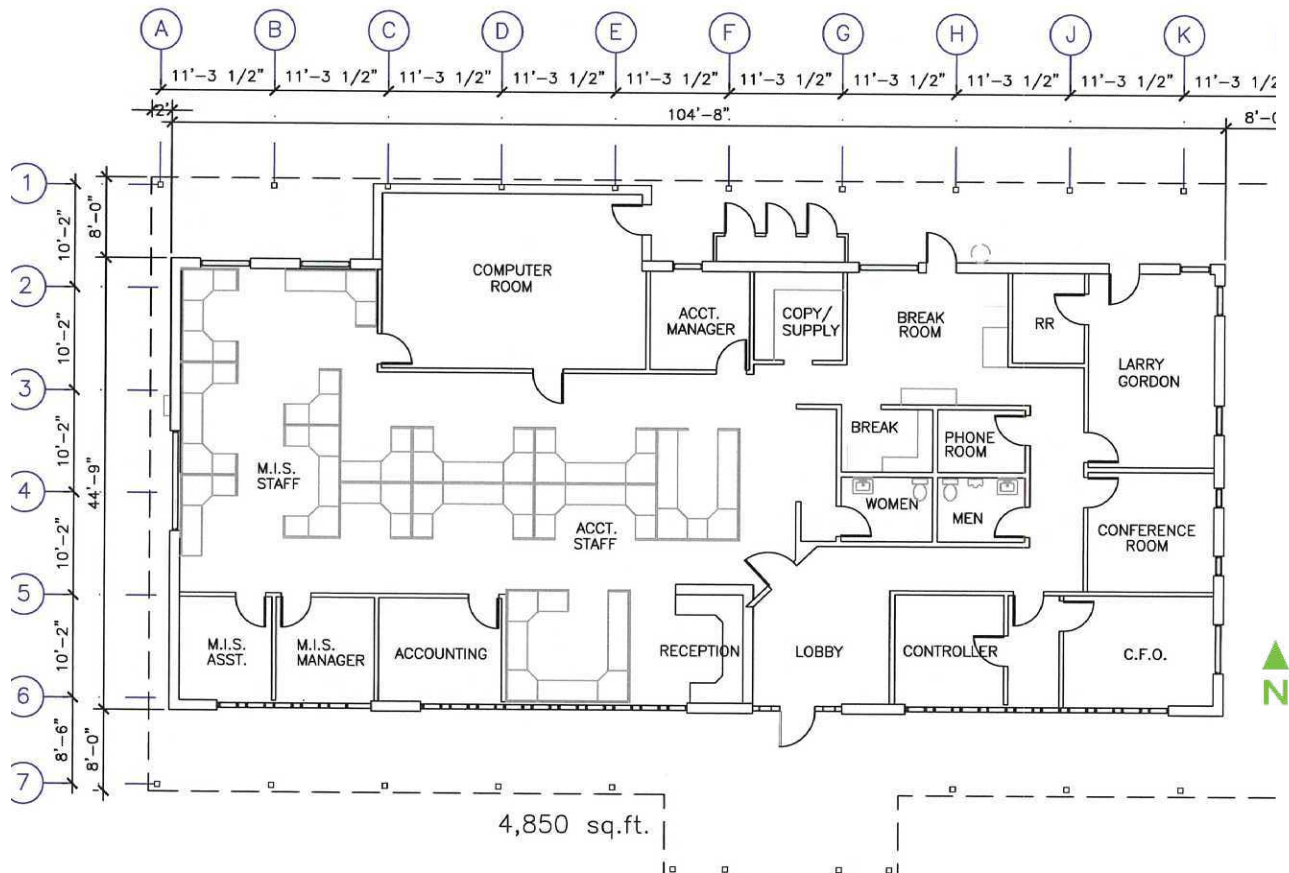


BUILDING A

- + 4,850 SF
- + Basic furniture in offices
- + Built in 1973



FLOOR PLAN



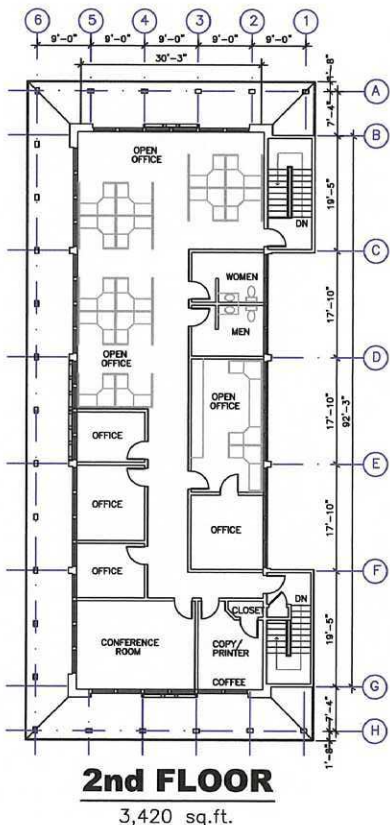
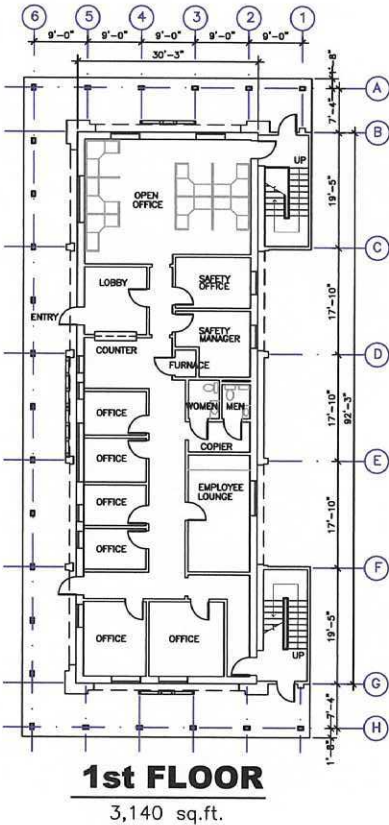


BUILDING B

- + Two story building 6,560 SF
 - First floor: 3,140 SF
 - Second floor: 3,420
- + Basic furniture/desks in offices
- + Built in 1983



FLOOR PLAN



FOR LEASE 151 STEWART ROAD SW

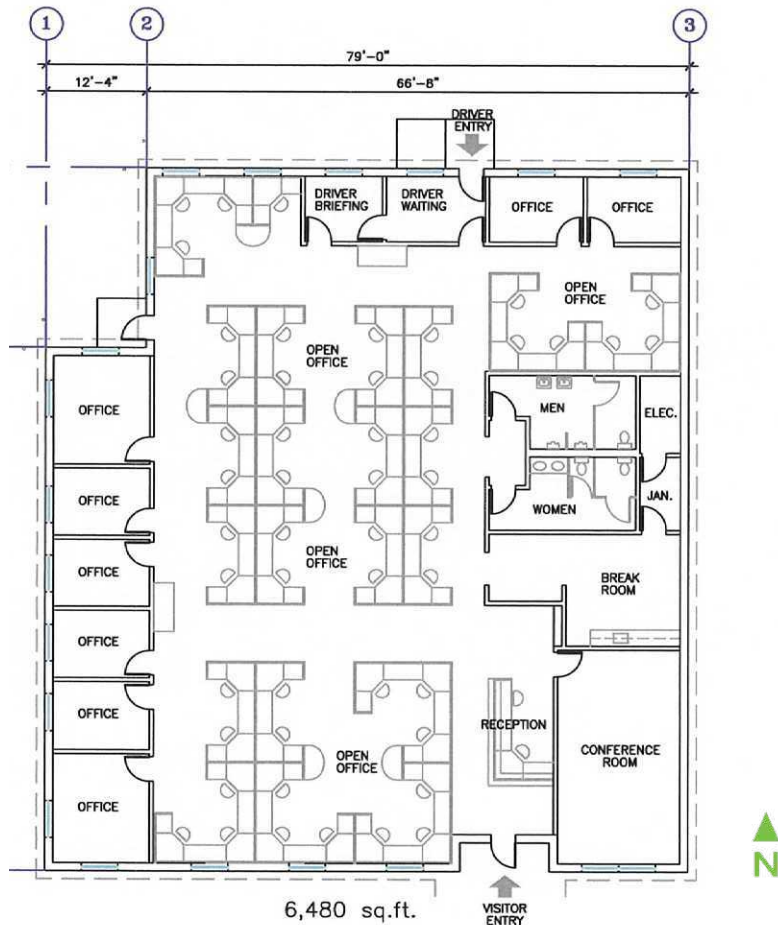


BUILDING C

- + 6,480 SF
- + All furniture in place
- + Built in 1990



FLOOR PLAN



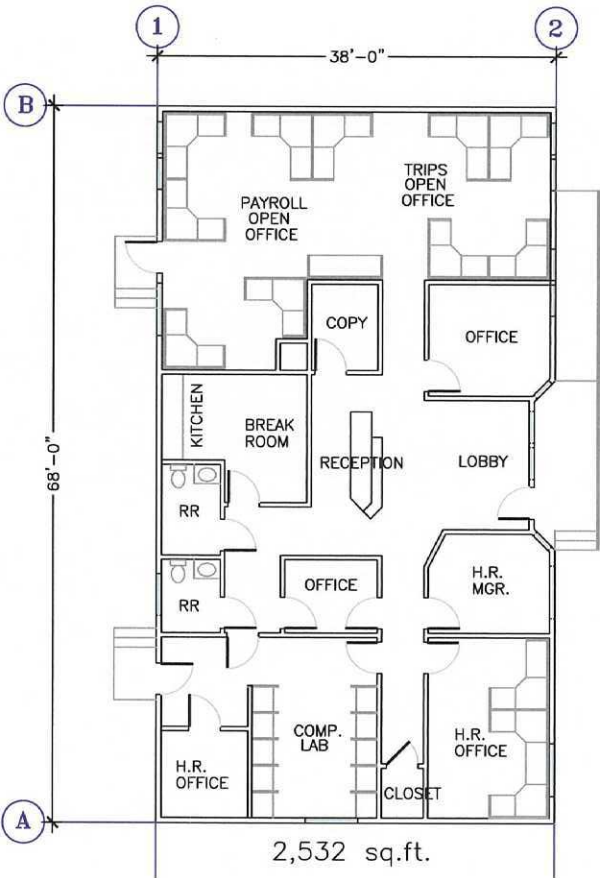


BUILDING D

- + 2,532 SF
- + Partial furniture in offices
- + Built in 1990



FLOOR PLAN

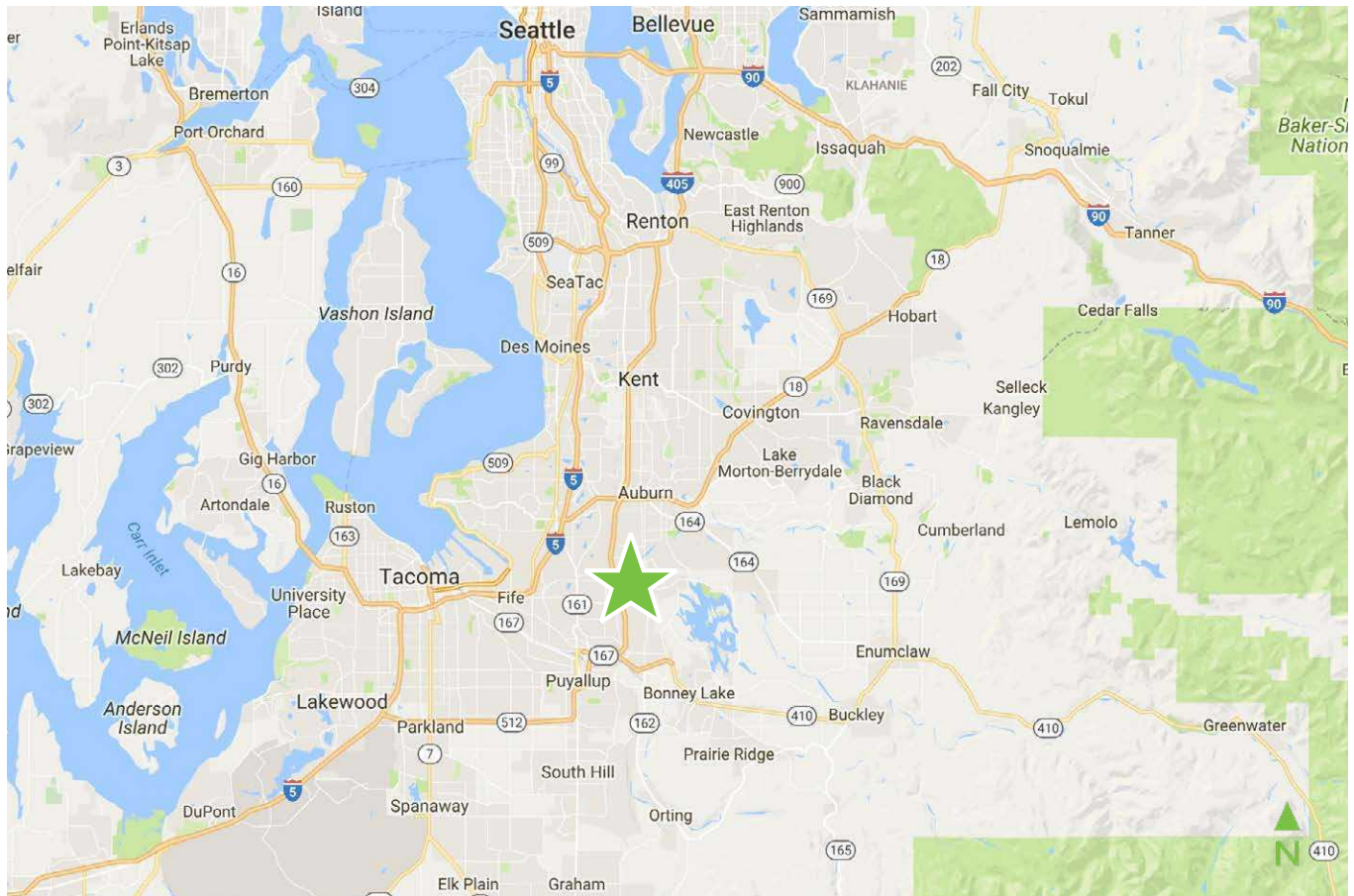


FOR LEASE 151 STEWART ROAD SW

PACIFIC, WA



SITE LOCATION



CONTACT US

TERESA PATTON

Team Leader
+1 253 596 0043
teresa.patton@cbre.com

DON MOODY

First Vice President
+1 253 596 0045
don.moody@cbre.com

CBRE, INC

1201 Pacific Avenue
Suite 1502
Tacoma, WA 98402

© 2017 CBRE, Inc. All rights reserved. This information has been obtained from sources believed reliable, but has not been verified for accuracy or completeness. You should conduct a careful, independent investigation of the property and verify all information. Any reliance on this information is solely at your own risk. CBRE and the CBRE logo are service marks of CBRE, Inc. All other marks displayed on this document are the property of their respective owners. Photos herein are the property of their respective owners. Use of these images without the express written consent of the owner is prohibited. rb 09/21/17

www.cbre.us/lsgseattle

CBRE