

Plaza Center & U.S. Bank Plaza

10900 & 10800
NE 8th Street
Bellevue, WA 98004



LEED and the related logo is a trademark owned by the U.S. Green Building Council and is used with permission.

CBRE **KBS**

Plaza Center & U.S. Bank Plaza

10900 & 10800 NE 8th Street, Bellevue, WA 98004



Plaza Center Lobby



Fitness Center



Recent
Exterior Paint



Exterior
Lighting



Upgraded
Landscaping



Upgraded
Lobbies



Upgraded
Elevators/
Cabs



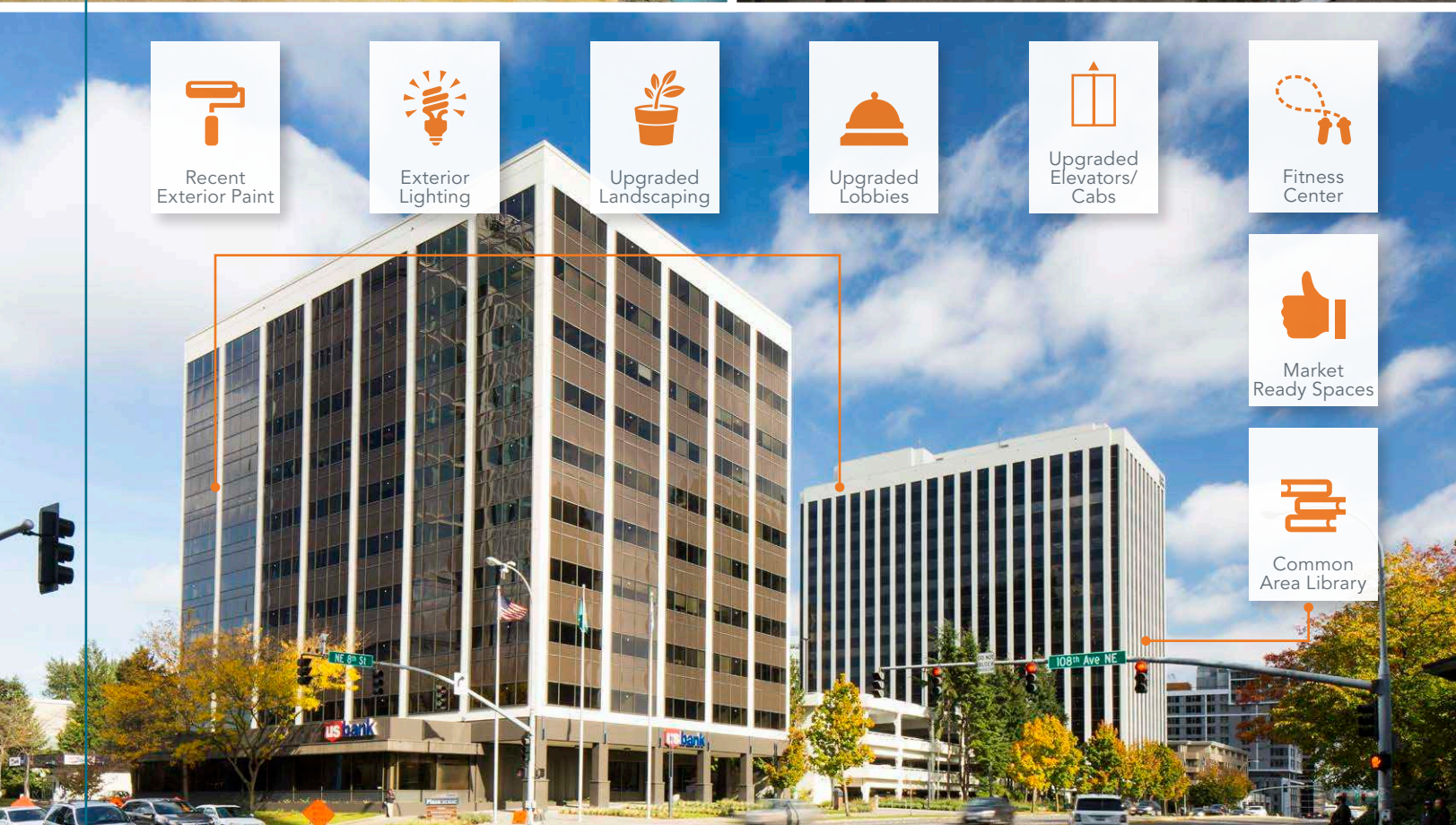
Fitness
Center



Market
Ready Spaces



Common
Area Library





Located in the heart of
Bellevue's Business District



Only blocks away from
Bellevue's high-end retail
destinations



Arts and entertainment are
just around the corner at the
Bellevue Arts Museum and
Meydenbauer Center



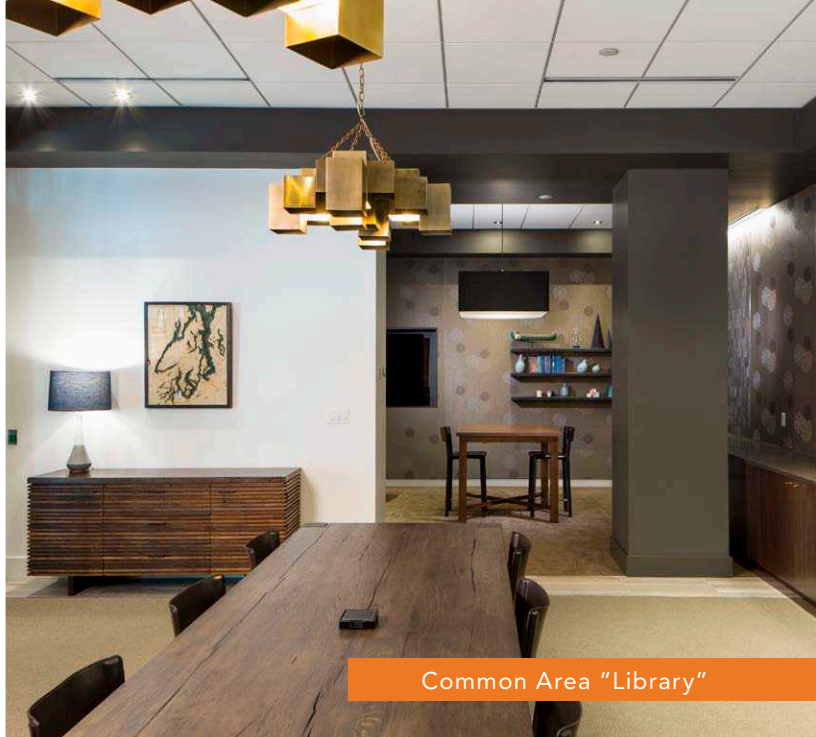
Convenient access to I-405,
I-90 and State Route 520



1,200+ parking spaces in six
levels of on-site parking

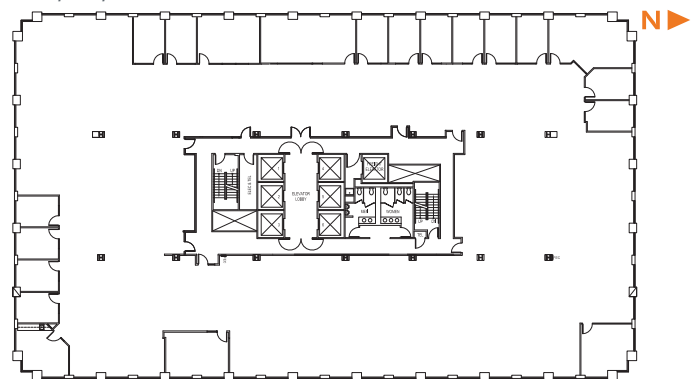


Amenities include a
conference center, gym,
bank branch, deli and
common area library

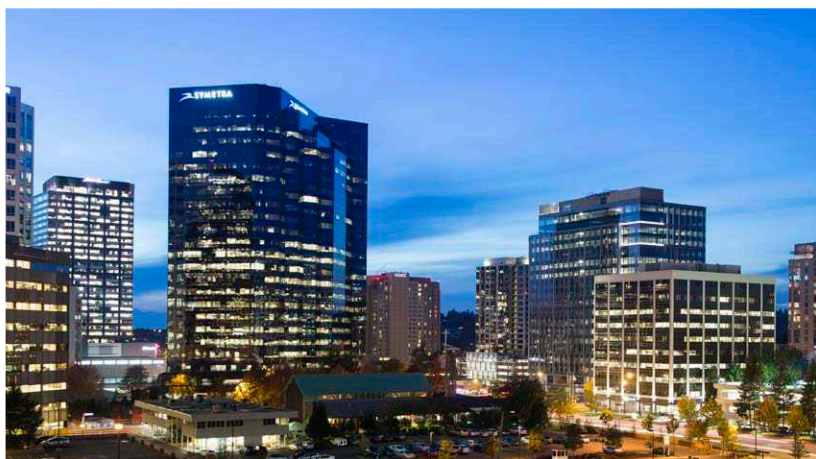
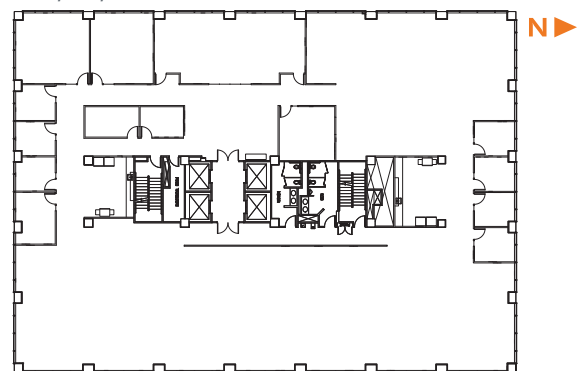


Common Area "Library"

Typical Floor Plan, Plaza Center
4th Floor, 22,795 RSF



Typical Floor Plan, U.S. Bank Plaza
7th Floor, 14,941 RSF



Plaza Center & U.S. Bank Plaza

10900 & 10800
NE 8th Street
Bellevue, WA 98004



Scotta Ashcraft
First Vice President
+1 206 292 6063
Scotta.Ashcraft@cbre.com

Tom Bohman
Senior Vice President
+1 425 462 6911
Tom.Bohman@cbre.com

Tim Owens
First Vice President
+1 425 462 6913
Tim.Owens@cbre.com

CBRE **KBS**

© 2017 CBRE, Inc. This information has been obtained from sources believed reliable. We have not verified it and make no guarantee, warranty or representation about it. Any projections, opinions, assumptions or estimates used are for example only and do not represent the current or future performance of the property. You and your advisors should conduct a careful, independent investigation of the property to determine to your satisfaction the suitability of the property for your needs. CBRE and the CBRE logo are service marks of CBRE, Inc. and/or its affiliated or related companies in the United States and other countries. All other marks displayed on this document are the property of their respective owners. Photos herein are the property of their respective owners and use of these images without the express written consent of the owner is prohibited. AMF 08-27-18