

# Plaza Center & U.S. Bank Plaza

10900 & 10800  
NE 8th Street  
Bellevue, WA 98004



LEED and the related logo is a trademark owned by the U.S. Green Building Council and is used with permission.

**CBRE** **KBS**

# Plaza Center & U.S. Bank Plaza

10900 & 10800 NE 8th Street, Bellevue, WA 98004



Plaza Center Lobby



Fitness Center



Recent  
Exterior Paint



Exterior  
Lighting



Upgraded  
Landscaping



Upgraded  
Lobbies



Upgraded  
Elevators/  
Cabs



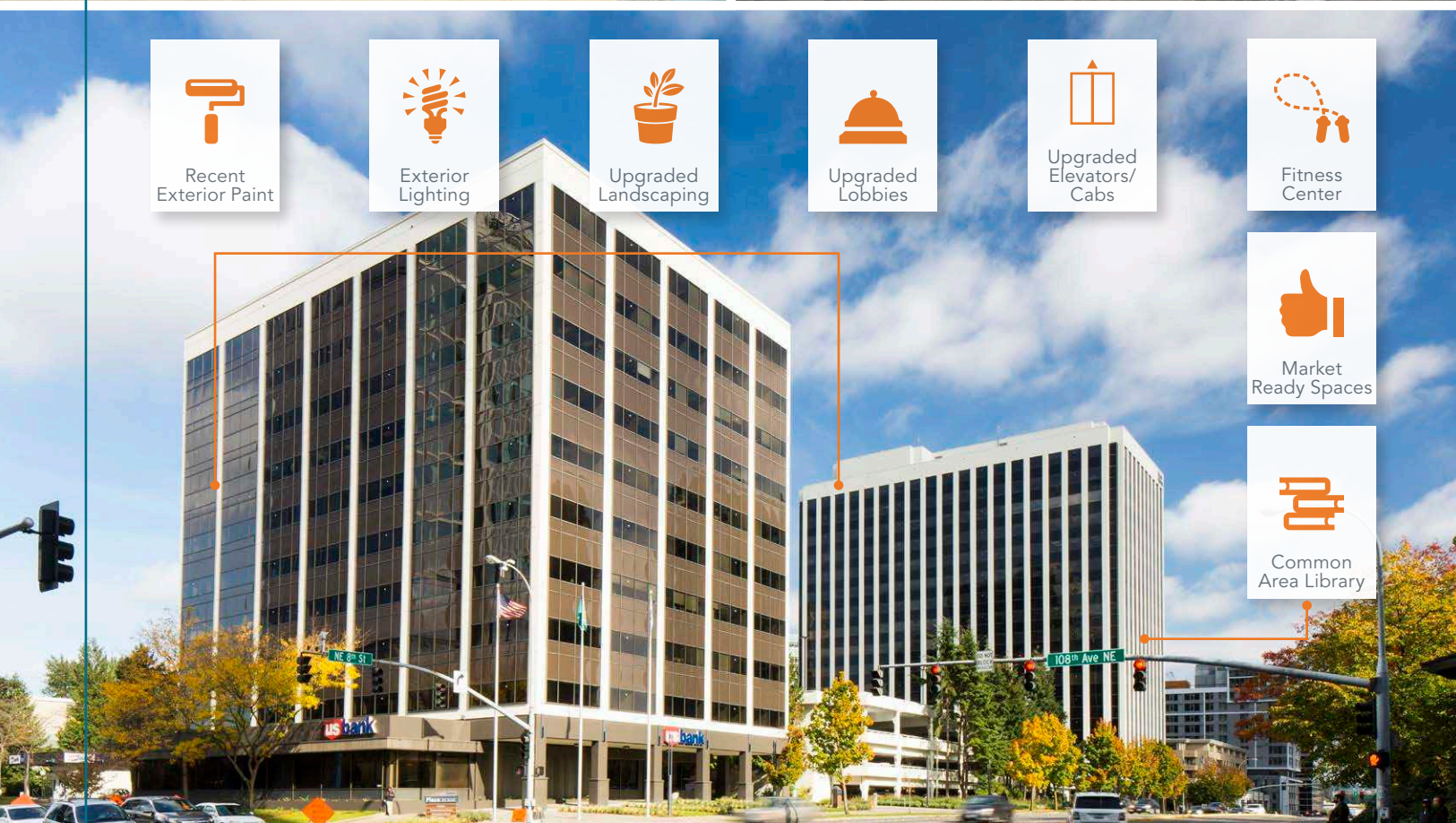
Fitness  
Center



Market  
Ready Spaces



Common  
Area Library





Located in the heart of Bellevue's Business District



Only blocks away from Bellevue's high-end retail destinations



Arts and entertainment are just around the corner at the Bellevue Arts Museum and Meydenbauer Center



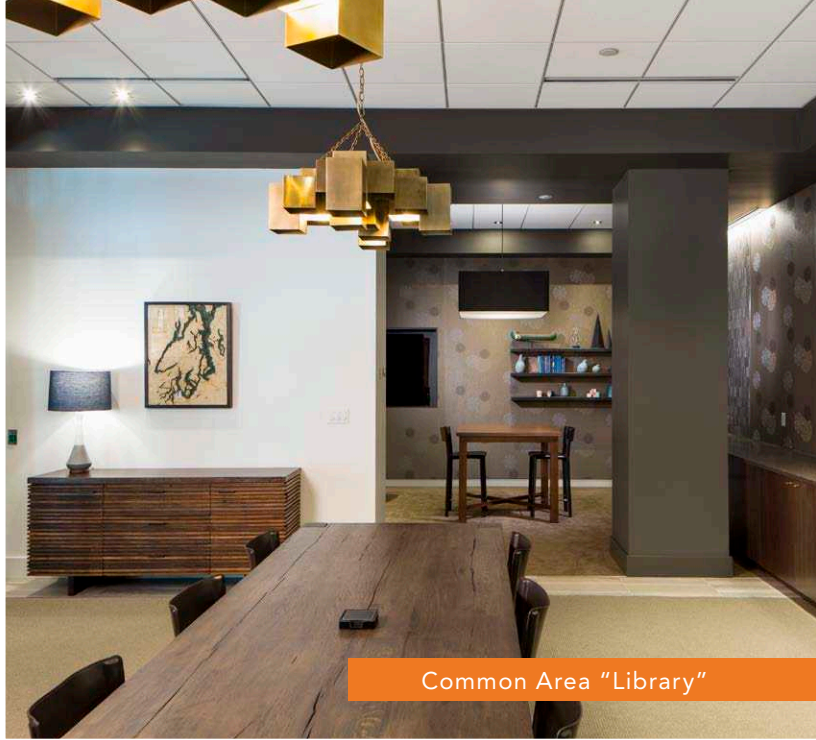
Convenient access to I-405, I-90 and State Route 520



1,200+ parking spaces in six levels of on-site parking

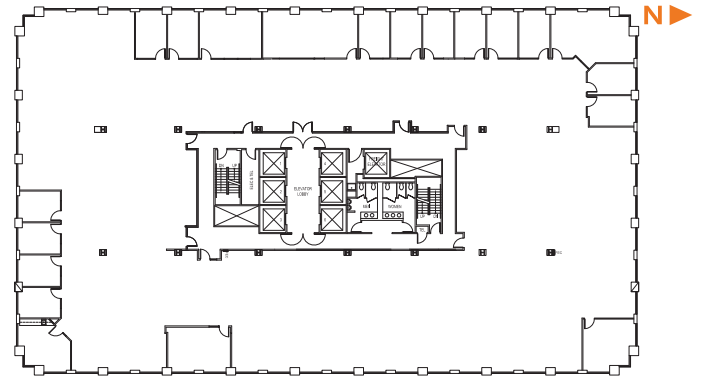


Amenities include a conference center, gym, bank branch, deli and common area library

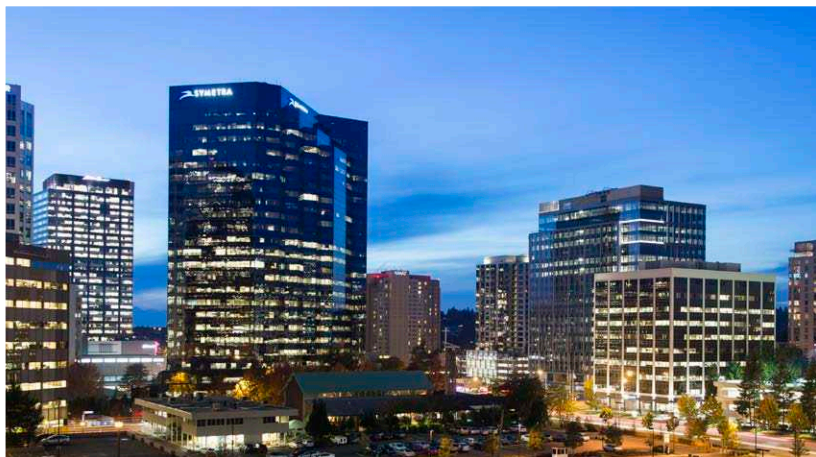
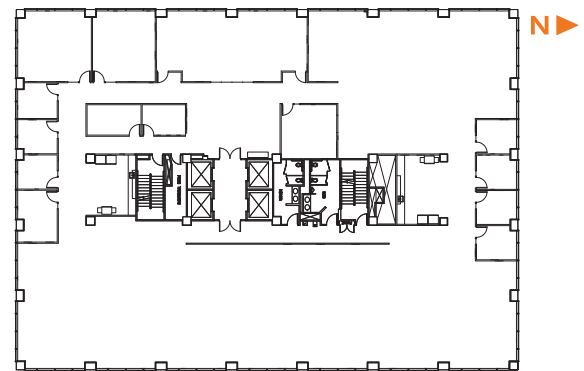


Common Area "Library"

Typical Floor Plan, Plaza Center  
4th Floor, 22,795 RSF



Typical Floor Plan, U.S. Bank Plaza  
7th Floor, 14,941 RSF



# Plaza Center & U.S. Bank Plaza

10900 & 10800  
NE 8th Street  
Bellevue, WA 98004



**Scotta Ashcraft**  
First Vice President  
+1 206 292 6063  
Scotta.Ashcraft@cbre.com

**Tom Bohman**  
Senior Vice President  
+1 425 462 6911  
Tom.Bohman@cbre.com

**Tim Owens**  
First Vice President  
+1 425 462 6913  
Tim.Owens@cbre.com



© 2017 CBRE, Inc. This information has been obtained from sources believed reliable. We have not verified it and make no guarantee, warranty or representation about it. Any projections, opinions, assumptions or estimates used are for example only and do not represent the current or future performance of the property. You and your advisors should conduct a careful, independent investigation of the property to determine to your satisfaction the suitability of the property for your needs. CBRE and the CBRE logo are service marks of CBRE, Inc. and/or its affiliated or related companies in the United States and other countries. All other marks displayed on this document are the property of their respective owners. Photos herein are the property of their respective owners and use of these images without the express written consent of the owner is prohibited. AMF 08-27-18