

WILLOWS PATHWAY BUILDING



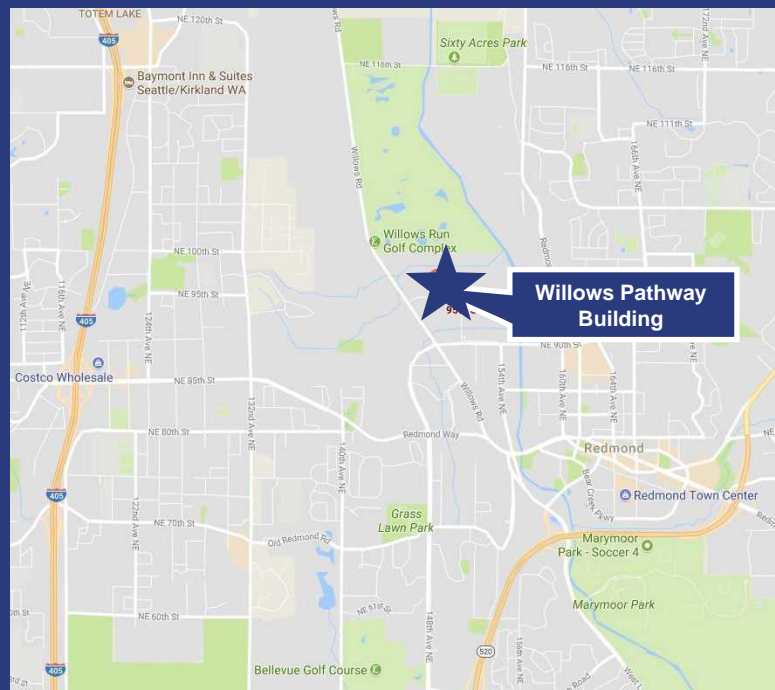
14907 NE 95th Street | Redmond, Washington

AVAILABLE SPACE

- 5,100 RSF - Office / Flex Space

PROPERTY FEATURES

- HVAC throughout
- Grade level loading
- Available now
- Flexible configurations of office / flex space
- 4/1,000 parking
- \$1.20/SF/Mo, NNN - Blended
- NNN: \$0.43/SF/Mo
- Great space for high-tech, lab or low bay warehouse users



For more information, please contact:



BRODERICK GROUP
10500 NE 8th Street, Suite 900
Bellevue, WA 98004
(425) 646-3444

CONNOR GILCHRIST

425.274.4286 | gilchrist@broderickgroup.com

TYLER SLONE

425.274.4281 | slone@broderickgroup.com

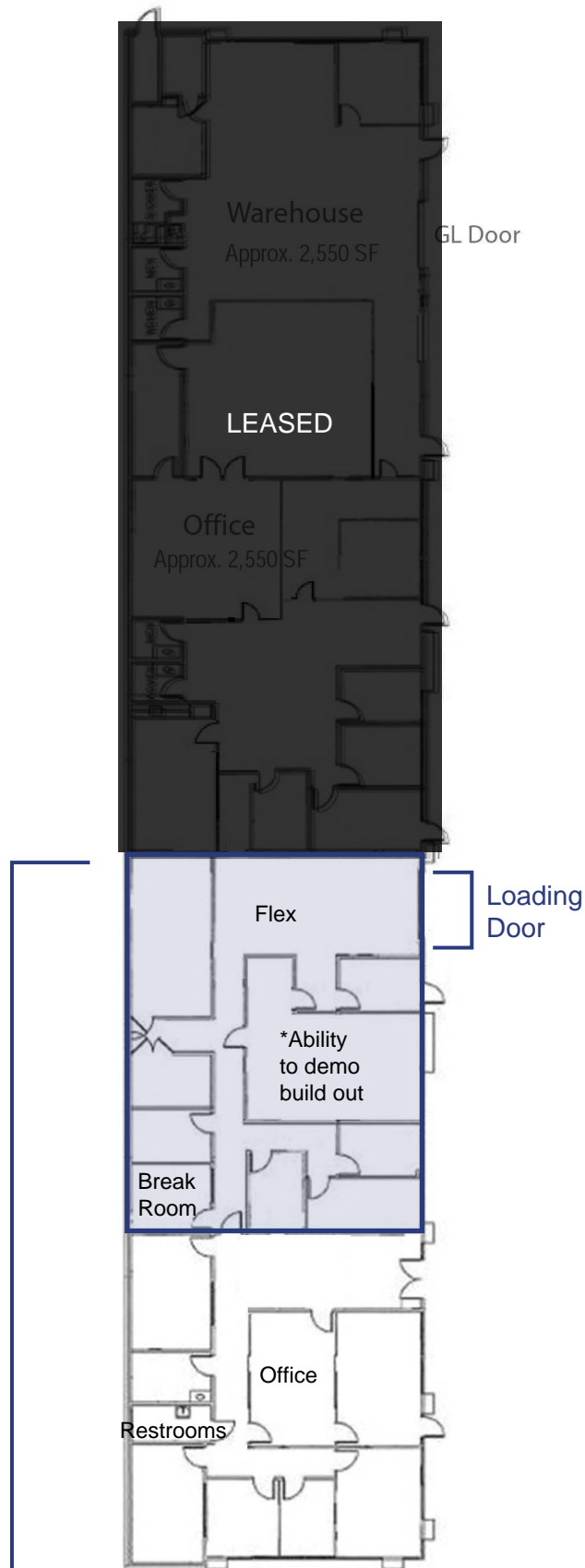
broderickgroup.com

The information contained herein has been given to us by the owner or sources that we deem reliable. We have no reason to doubt its accuracy, but we do not guarantee it. Prospective tenants should carefully verify all information contained herein.

WILLOWS PATHWAY BUILDING

5,100 RSF OFFICE / FLEX

14907 NE 95th Street | Redmond, Washington



CONNOR GILCHRIST
425.274.4286
gilchrist@broderickgroup.com

5,100 SF

TYLER SLONE
425.274.4281
slone@broderickgroup.com

