

# 1315-1327

**MERIDIAN AVE E**  
EDGEWOOD, WA 98371

## FOR LEASE

|                |                      |
|----------------|----------------------|
| Available Unit | <b>Southern Unit</b> |
| Available Size | 535 sf               |
| Year Built     | 1962                 |
| Lease Price    | \$15 / sf            |



**DAN YOO** 206.359.1817  
tspmdany@gmail.com

**BRIAN SHIN** 253.249.8011  
brian.shin@tspmanagement.net

The information contained herein has been given to us by sources that we deem reliable. We have no reason to doubt its accuracy, but we do not guarantee it. Prospective buyers/tenants should carefully verify all information

**TSPM**  
PROPERTY MANAGEMENT



## Property Description

Versatile Commercial Property on Meridian in Edgewood! This available Center unit is 905 sq. ft. Comes with two entry doors. Nice open space with one room, restroom, and a storage. Perfect space for an office, salon, and more. Bring your concept!

# Southern Unit



**DAN YOO** 206.359.1817  
tspmdany@gmail.com

**BRIAN SHIN** 253.249.8011  
brian.shin@tspmanagement.net

The information contained herein has been given to us by sources that we deem reliable. We have no reason to doubt its accuracy, but we do not guarantee it. Prospective buyers/tenants should carefully verify all information

**TSPM**  
PROPERTY MANAGEMENT

# 1315-1327

MERIDIAN AVE E  
EDGEWOOD, WA 98371

## Southern Unit



**DAN YOO** 206.359.1817  
tspmdany@gmail.com

**BRIAN SHIN** 253.249.8011  
brian.shin@tspmanagement.net

The information contained herein has been given to us by sources that we deem reliable. We have no reason to doubt its accuracy, but we do not guarantee it. Prospective buyers/tenants should carefully verify all information

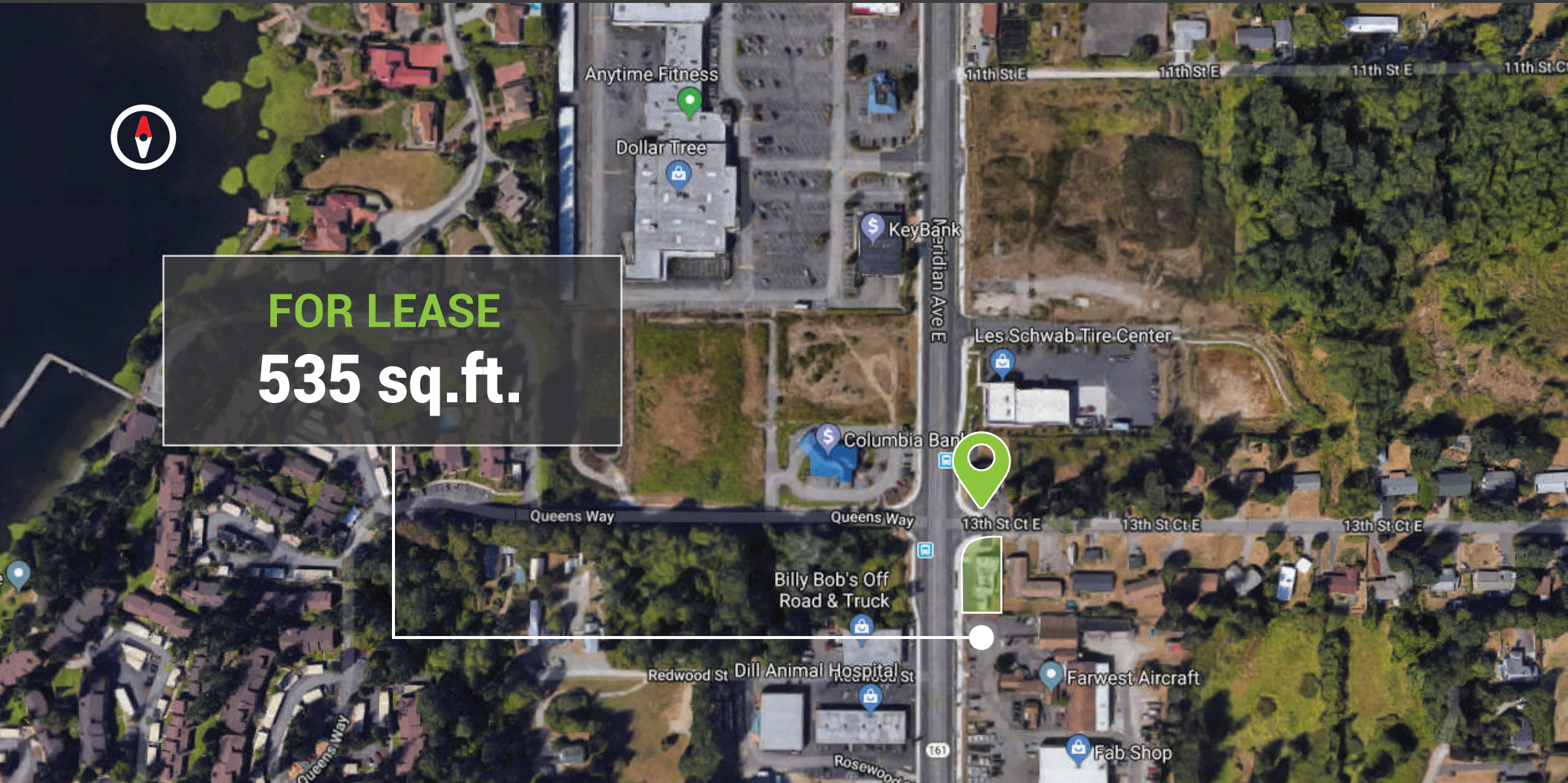
**TSPM**  
PROPERTY MANAGEMENT



# 1315-1327

**MERIDIAN AVE E**  
EDGEWOOD, WA 98371

## Southern Unit



**DAN YOO** 206.359.1817  
tspmdany@gmail.com

**BRIAN SHIN** 253.249.8011  
brian.shin@tspmanagement.net

The information contained herein has been given to us by sources that we deem reliable. We have no reason to doubt its accuracy, but we do not guarantee it. Prospective buyers/tenants should carefully verify all information.

**TSPM**  
PROPERTY MANAGEMENT