

# STIMSON-GREEN MANSION

First Hill Office Space for Lease



For more information  
please contact:

**Cameron Kent**

206.838.7737

ckent@ewingandclark.com

**Tom Graf**

206.295.1445

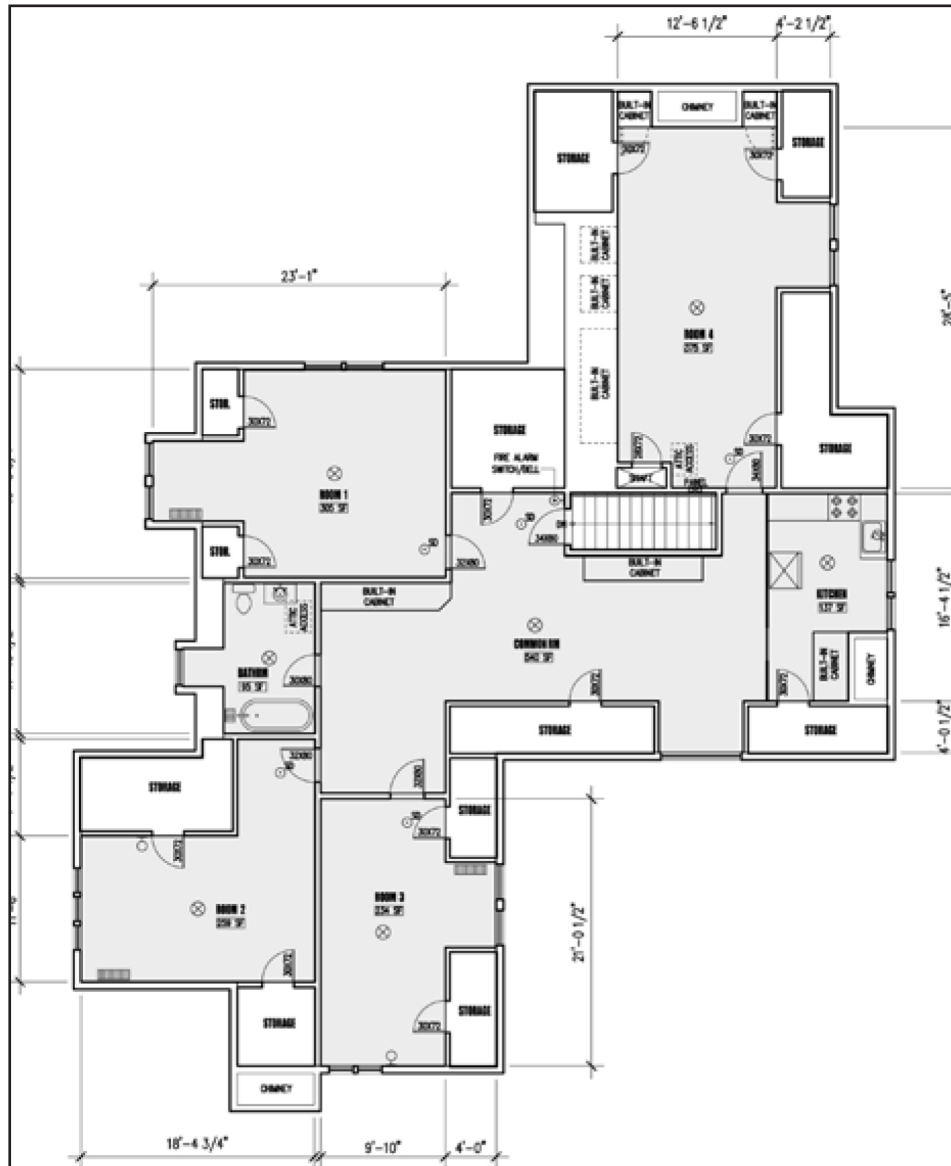
tomgraff@ewingandclark.com

**EWING & CLARK**

1204 Minor Ave, Seattle 98101

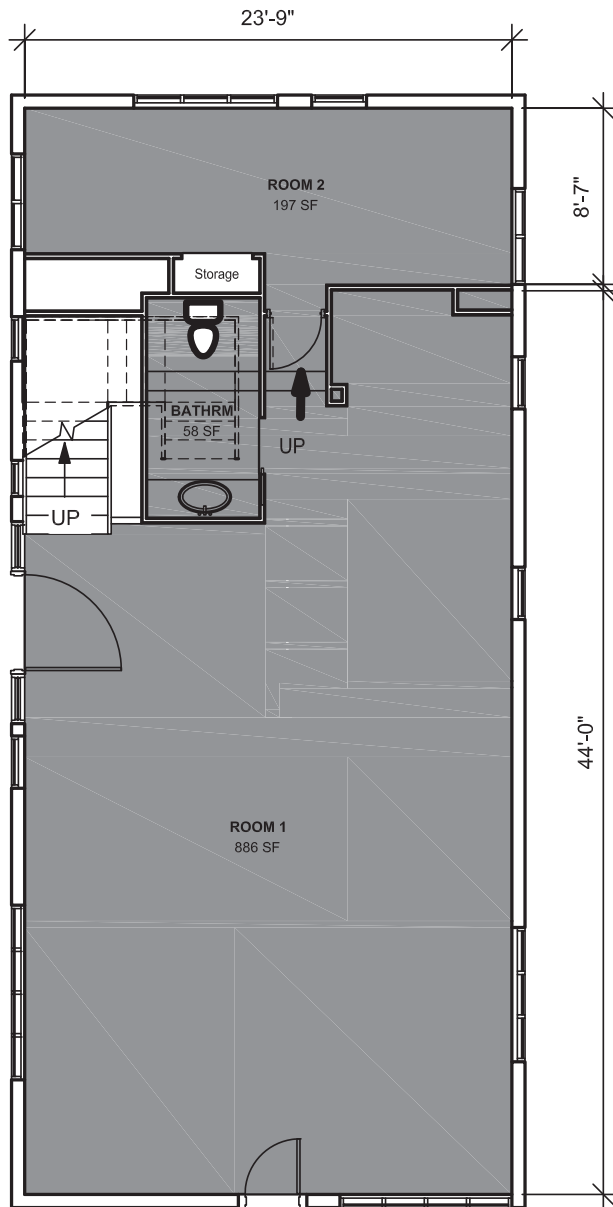
- Nicely-detailed top floor space with built-in casework at the Historic/Landmark Stimson-Green Mansion. Two floor, standalone carriage house office space available also.
- Available on-site parking for rent
- Current home of the Washington Trust for Historic Preservation
- Designed by Kirtland Cutter, constructed 1901 and immaculately maintained interiors and grounds
- 2,812 sf of 3rd floor office space in main house @\$22/sf/yr + Pro Rata Utility %
- 2,125 sf of carriage house space @ \$23/sf/yr + Pro Rata Utility %
- Please call brokers for more information or to schedule a tour

# MAIN FLOOR PLAN

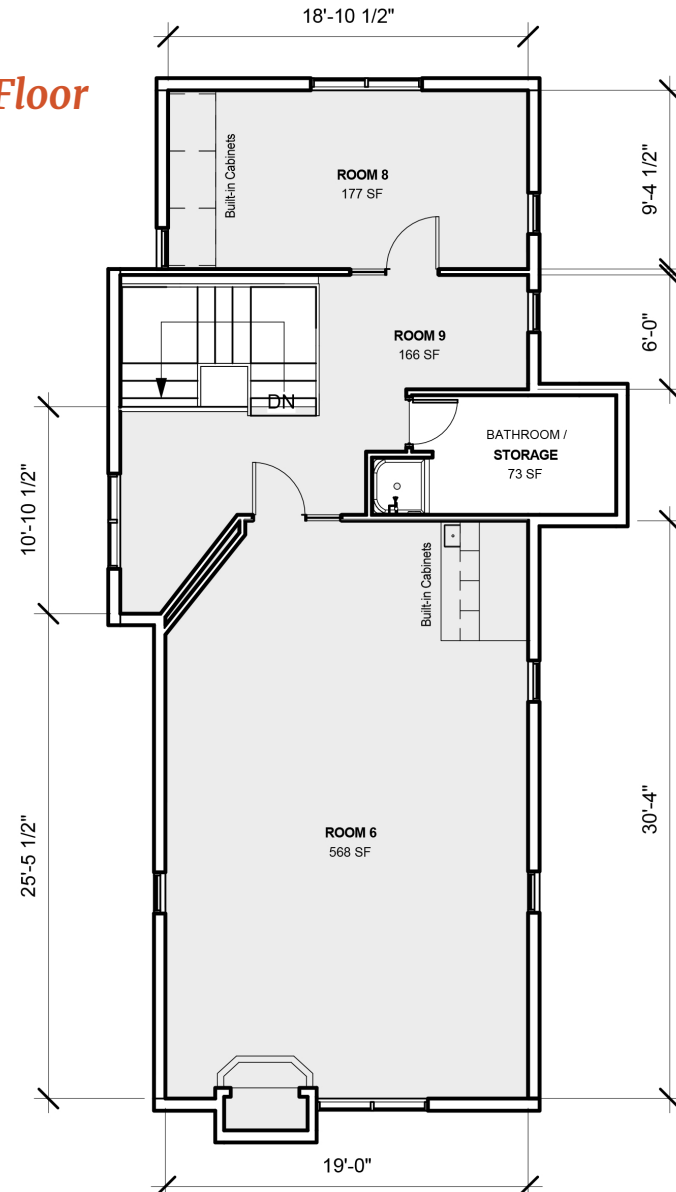


# CARRIAGE HOUSE FLOOR PLAN

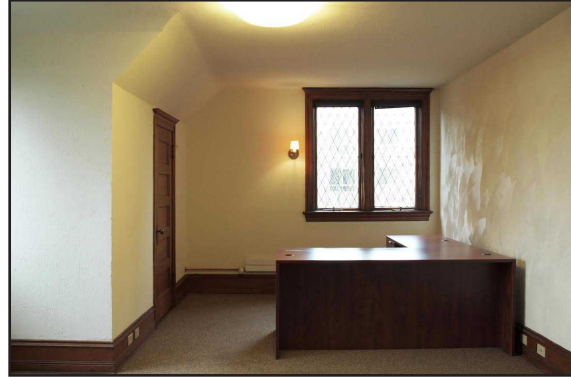
**1st Floor**



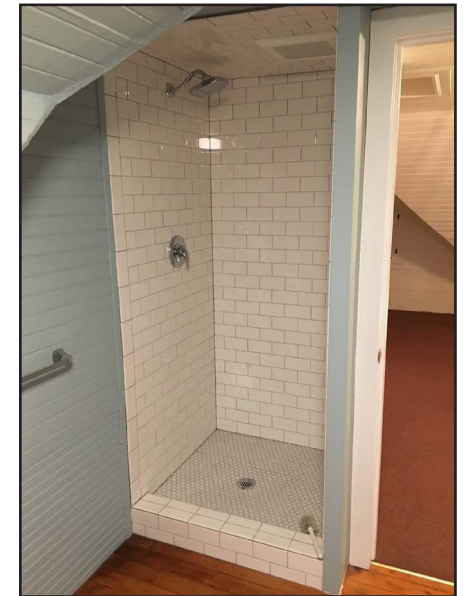
**2nd Floor**



# MAIN HOUSE PHOTOS



# CARRIAGE HOUSE PHOTOS



# AERIAL MAP

