

South Hill Retail Space for Lease

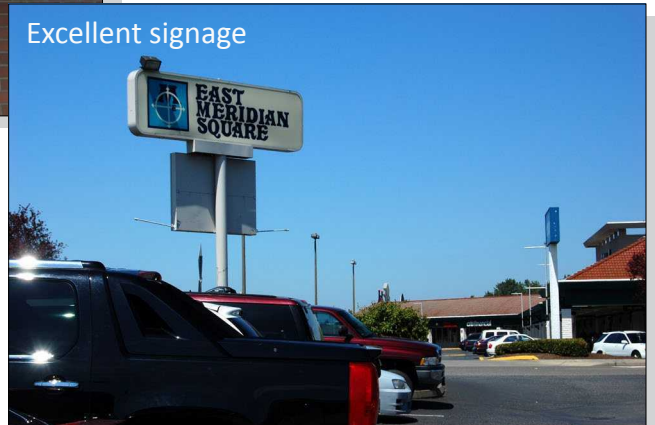
East Meridian Square

10312 120th Street SE, Puyallup, WA 98374

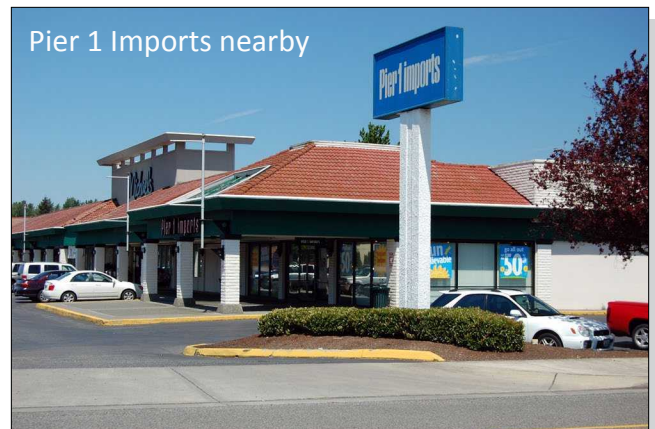


- 750 square feet of retail space
- Located in busy East Meridian Square
- Ample parking
- Excellent visibility from East Meridian
- Other fine tenants include OYAMAM Buffet, Exhibitors, H & R Block, New Beginnings Bridal.
- Demographics available
- \$900.00 per month plus NNN

Excellent signage



Pier 1 Imports nearby



please visit www.johnson-commercial.com

For more information, contact:
Timothy Johnson, Broker
253.589.9999, timothy@johnson-commercial.com
11120 Gravelly Lake Drive SW, Suite 2
Lakewood, WA 98499-1350 visit: www.johnson-commercial.com

J O H N S O N
C O M M E R C I A L

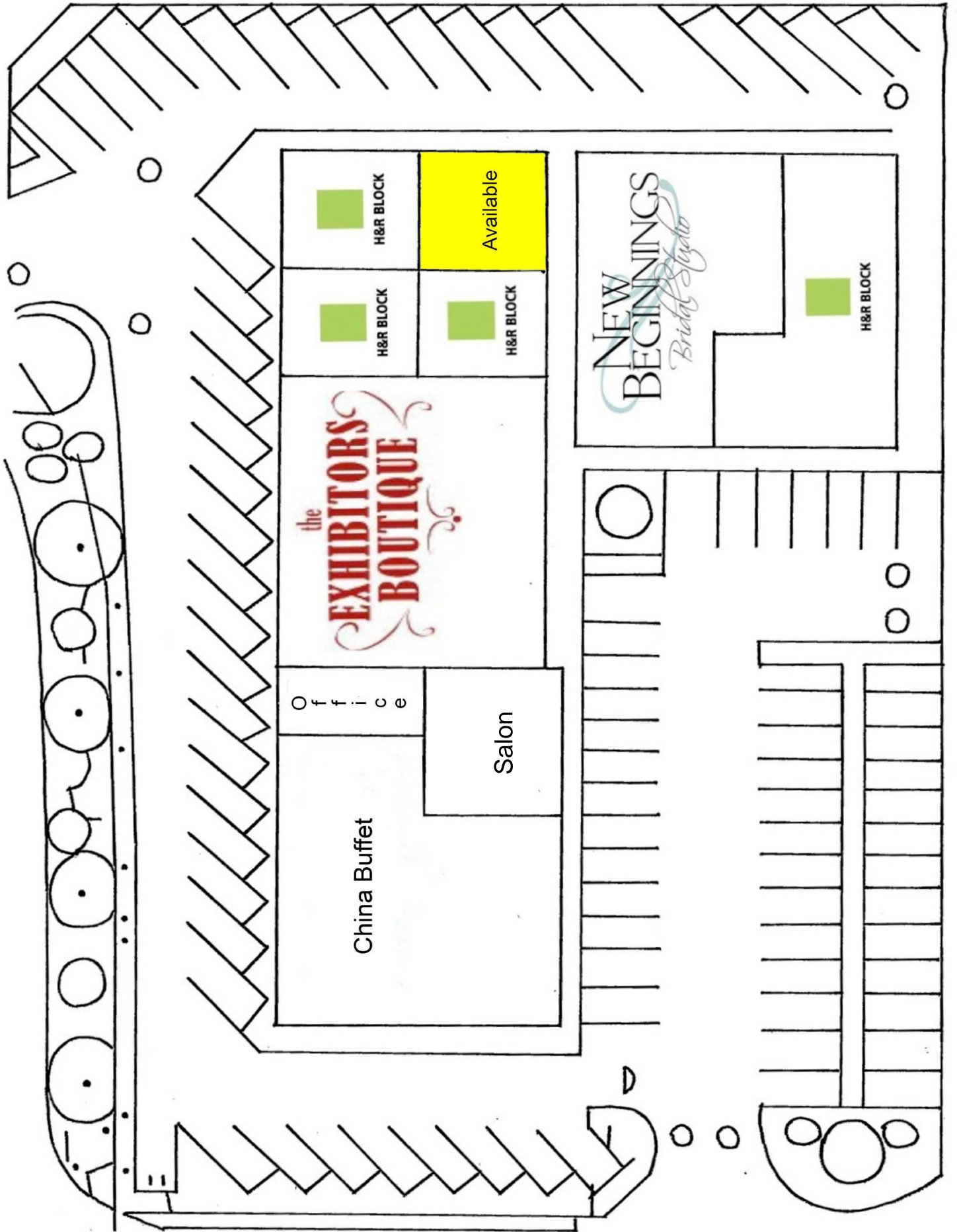


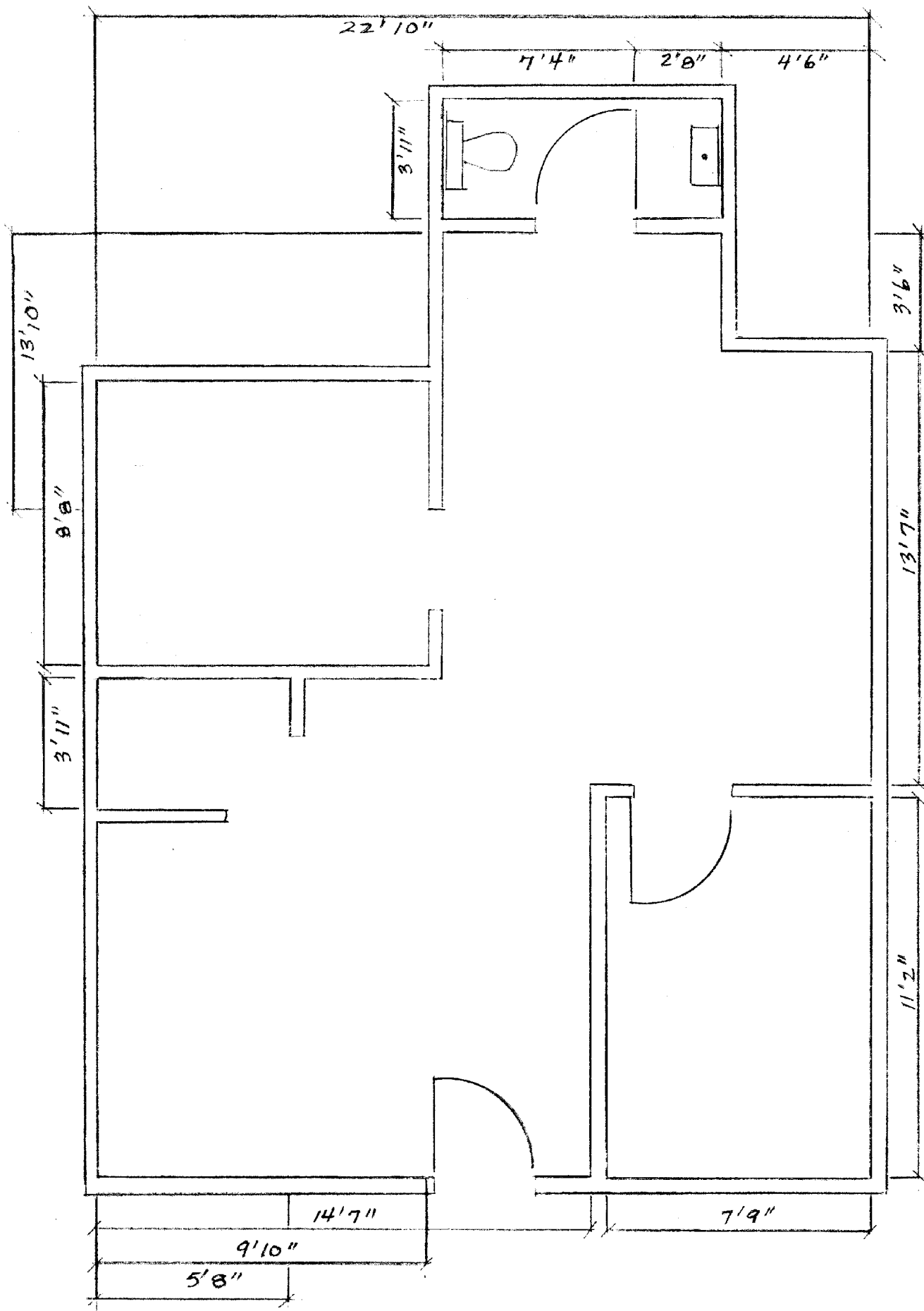
Pier 1 Imports

Space

H&R BLOCK







EAST MERIDIAN SQUARE · 10312 120th ST. E · PUYALLUP WA 98374
UNIT 10 · 714 SQ. FT.