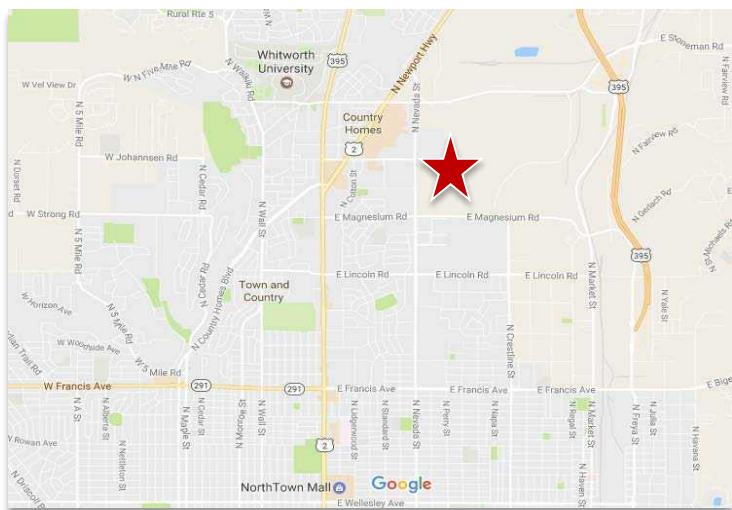


8600 N Nevada  
Spokane, WA



## Ground Lease Available

### Property Features

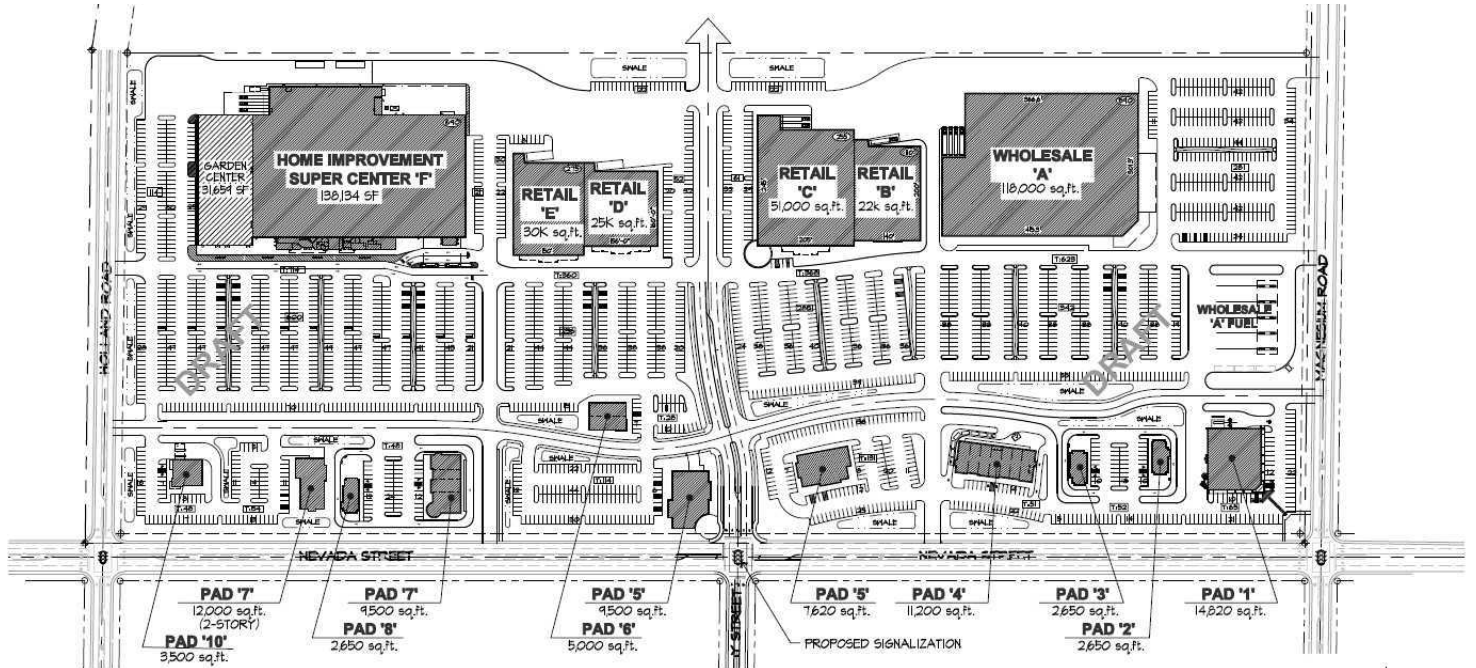
- Lot Size: 117.86 Acres  $\pm$
- Zoning: Outside City Zoning
- Located near new retail developments
- Highly visible corner location with a traffic signal
- Parcel Numbers:
  - 36206.9040-.9044 (72.37 Acres  $\pm$ )
  - 36215.9026 (45.49 Acres  $\pm$ )

For More Information, Contact: **Chris Bell**  
+1 509 622 3538  
cbell@naiblack.com

NO WARRANTY OR REPRESENTATION, EXPRESS OR IMPLIED, IS MADE AS TO THE ACCURACY OF THE INFORMATION CONTAINED HEREIN, AND THE SAME IS SUBMITTED SUBJECT TO ERRORS, OMISSIONS, CHANGE OF PRICE, RENTAL OR OTHER CONDITIONS, PRIOR SALE, LEASE OR FINANCING, OR WITHDRAWAL WITHOUT NOTICE, AND OF ANY SPECIAL LISTING CONDITIONS IMPOSED BY OUR PRINCIPALS NO WARRANTIES OR REPRESENTATIONS ARE MADE AS TO THE CONDITION OF THE PROPERTY OR ANY HAZARDS CONTAINED THEREIN OR ANY TO BE IMPLIED.

Black Commercial, Inc.  
107 S. Howard, Suite 500  
Spokane, WA 99201  
+1 509 623 1000  
[naiblack.com](http://naiblack.com)

# 8600 N Nevada Spokane, WA

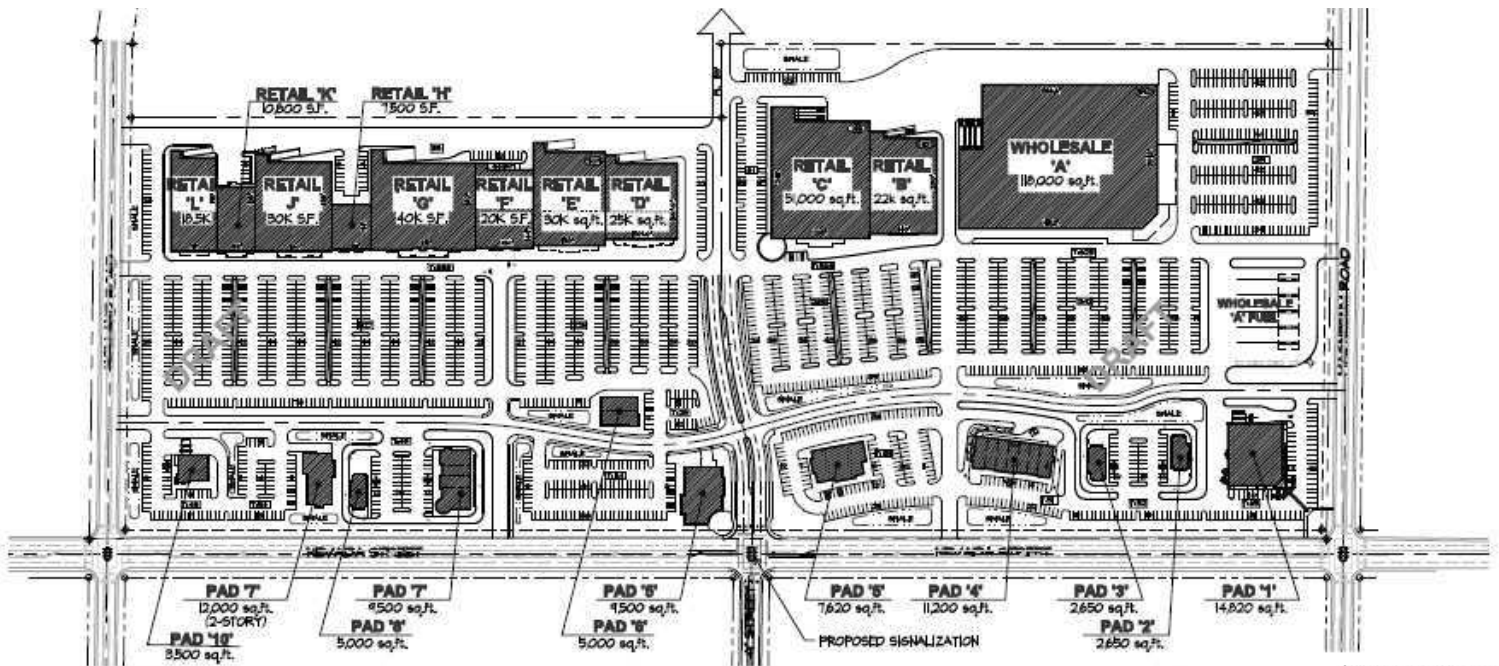


**PSP.01A** PRELIMINARY SITE PLAN # 01A  
SCALE: 1"=200'-0" • FEBRUARY 28, 2007 • 07-250



**BERNARDO WILLS**  
ARCHITECTS PC

107 S HOWARD, FOURTH FLOOR  
SPOKANE, WA 99201  
509.838.4511  
FAX 509.838.4605  
WWW.BERNARDOWILLS.COM



**PSP.02** PRELIMINARY SITE PLAN # 02  
SCALE: 1"=200'-0" • FEBRUARY 28, 2007 • 07-250



**BERNARDO WILLS**  
ARCHITECTS PC

107 S HOWARD, FOURTH FLOOR  
SPOKANE, WA 99201  
509.838.4511  
FAX 509.838.4605  
WWW.BERNARDOWILLS.COM

NO WARRANTY OR REPRESENTATION, EXPRESS OR IMPLIED, IS MADE AS TO THE ACCURACY OF THE INFORMATION CONTAINED HEREIN, AND THE SAME IS SUBMITTED SUBJECT TO ERRORS, OMISSIONS, CHANGE OF PRICE, RENTAL OR OTHER CONDITIONS, PRIOR SALE, LEASE OR FINANCING, OR WITHDRAWAL WITHOUT NOTICE, AND OF ANY SPECIAL LISTING CONDITIONS IMPOSED BY OUR PRINCIPALS NO WARRANTIES OR REPRESENTATIONS ARE MADE AS TO THE CONDITION OF THE PROPERTY OR ANY HAZARDS CONTAINED THEREIN OR ANY TO BE IMPLIED.

Black Commercial, Inc.  
107 S. Howard, Suite 500  
Spokane, WA 99201  
+1 509 623 1000  
[naiblack.com](http://naiblack.com)