



ASPIRE 11

FOR LEASE | 1023 MARTIN LUTHER KING JR WAY | TACOMA, WA

FOR LEASE

Aspire 11

1023 MARTIN LUTHER KING JR WAY | TACOMA, WA



NEW Mixed-Use Retail Development on the corner of MLK Jr Way and S 11th St

BASE RENT \$32.00 psf NNN

ADJACENT to the new Tacoma Light Rail Station

AMPLE retail parking on site

UP TO 16,991 SF of retail divisible to 1,000 SF

INFRASTRUCTURE includes hood chaises and grease interceptor

REJUVENATED neighborhood with over 500 newly built apartments within a block

COMPLETED Spring 2021

DEMOGRAPHICS

	1 Mile	3 Miles	5 Miles
Population	28,932	108,958	256,534
Median HH Income	\$47,195	\$56,732	\$60,165

JEFF KRAFT
253.722.1405
jeff.kraft@kidder.com

CRAMER FOSTER
253.722.1423
cramer.foster@kidder.com

KIDDER.COM

This information supplied herein is from sources we deem reliable. It is provided without any representation, warranty, or guarantee, expressed or implied as to its accuracy. Prospective Buyer or Tenant should conduct an independent investigation and verification of all matters deemed to be material, including, but not limited to, statements of income and expenses. Consult your attorney, accountant, or other professional advisor.

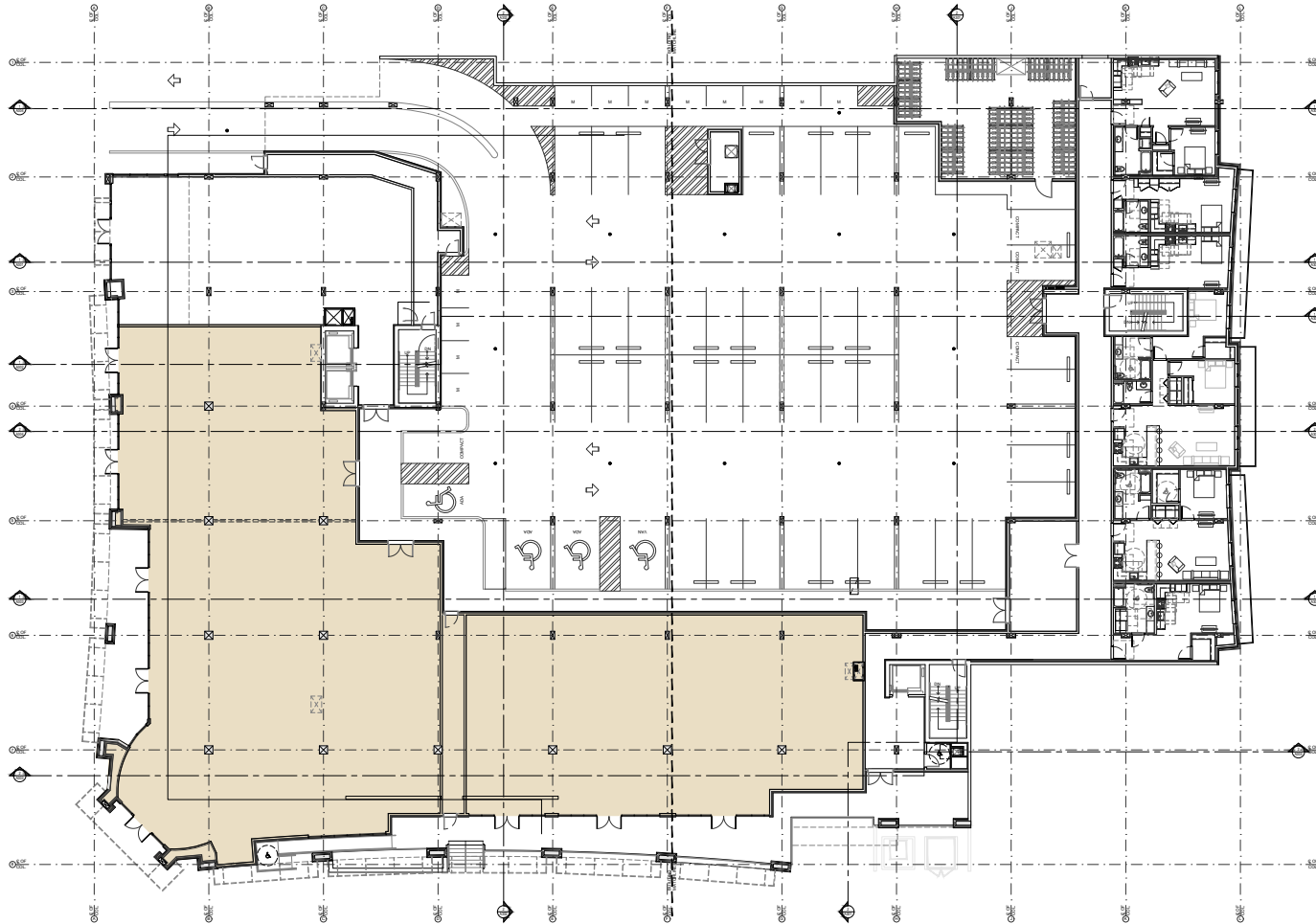


FOR LEASE

Aspire 11

1023 MARTIN LUTHER KING JR WAY | TACOMA, WA

Retail Floor Plan



KIDDER.COM

This information supplied herein is from sources we deem reliable. It is provided without any representation, warranty, or guarantee, expressed or implied as to its accuracy. Prospective Buyer or Tenant should conduct an independent investigation and verification of all matters deemed to be material, including, but not limited to, statements of income and expenses. Consult your attorney, accountant, or other professional advisor.

