



FOR LEASE

Puyallup Nation Logistics Center II

FIFE, WA



Build-to-Suit
Up to $\pm 1,104,572$ SF

MATT WOOD
KBC Advisors
206.595.6814
matt.wood@kbcadvisors.com

TODD CLARKE
Kidder Mathews
253.722.1422
todd.clarke@kidder.com

TY CLARKE
Kidder Mathews
253.722.1419
ty.clarke@kidder.com

**Kidder
Mathews**

 **PANATTONI**[®]


KBCADVISORS

This information supplied herein is from sources we deem reliable. It is provided without any representation, warranty, or guarantee, expressed or implied as to its accuracy. Prospective Buyer or Tenant should conduct an independent investigation and verification of all matters deemed to be material, including, but not limited to, statements of income and expenses. Consult your attorney, accountant, or other professional advisor.

KIDDER.COM

FOR LEASE

Puyallup Nation Logistics Center II

3105 FRANK ALBERT RD E, FIFE, WA



PNLC II

CLASS A Industrial Building

36' clear-height

POWER 3,000 AMPS, 3-phase

ESFR sprinklers

ABILITY to secure site

EXCELLENT ACCESS to I-5/Port of Tacoma

130' truck court

FULLY PERMITTED fill and grade 2 weeks

LARGEST trailer yard in Fife

SOVEREIGN NATION benefits

UNLIMITED uses allowed

LOWEST NNN costs

KIDDER.COM

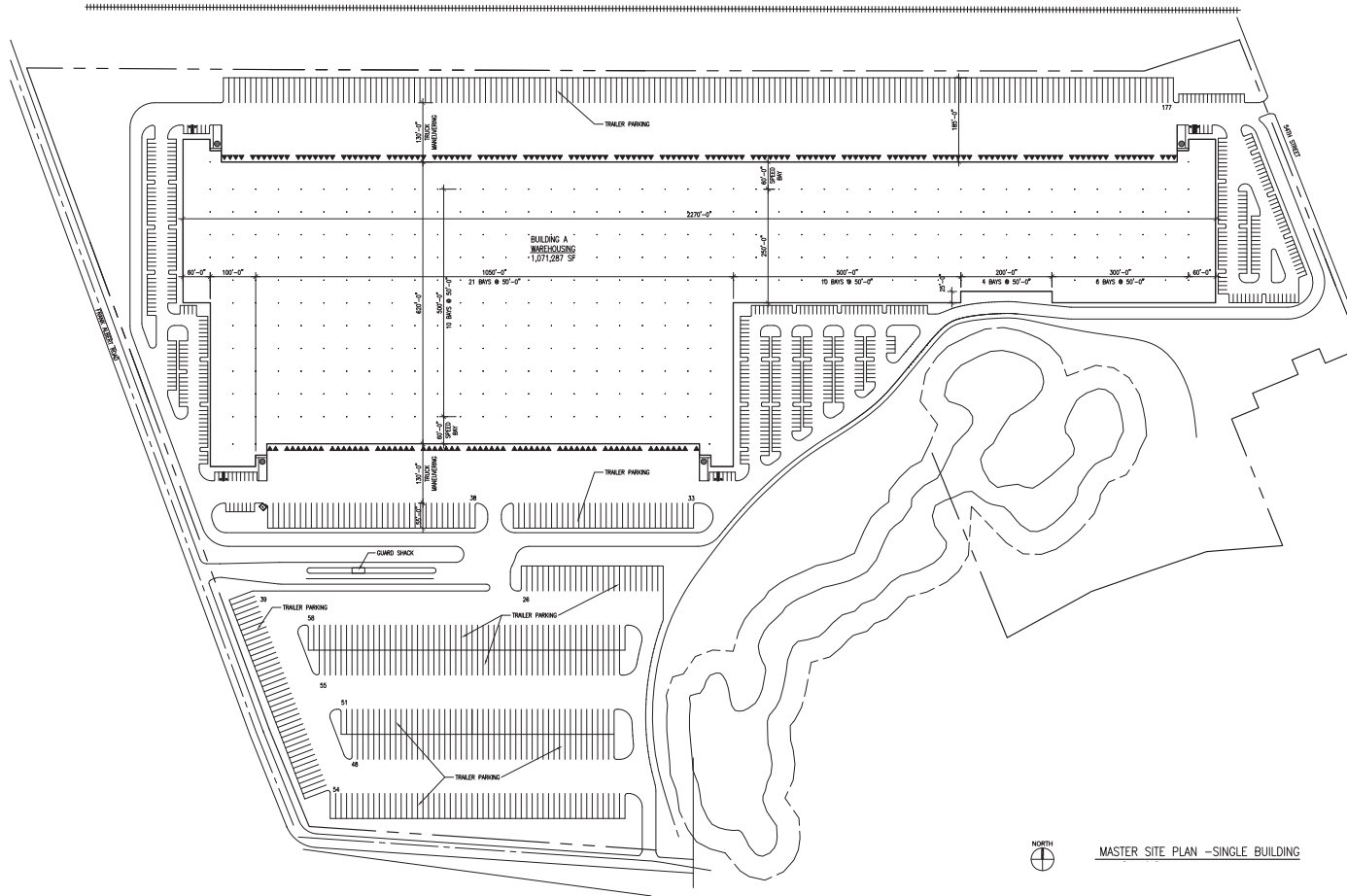
This information supplied herein is from sources we deem reliable. It is provided without any representation, warranty, or guarantee, expressed or implied as to its accuracy. Prospective Buyer or Tenant should conduct an independent investigation and verification of all matters deemed to be material, including, but not limited to, statements of income and expenses. Consult your attorney, accountant, or other professional advisor.



FOR LEASE

Puyallup Nation Logistics Center II

3105 FRANK ALBERT RD E, FIFE, WA



BUILDING A FEATURES

- 871,081 SF**
- 170 dock-doors**
- 4 grade-doors**
- 286 car parking**
- 441 dedicated trailer stalls**

BUILDING B FEATURES

- 233,491 SF**
- 81 dock-doors**
- 3 grade-doors**
- 162 car parking**
- 104 dedicated trailer stalls**

MATT WOOD
KBC Advisors
206.595.6814
matt.wood@kbcadvisors.com

TODD CLARKE
Kidder Mathews
253.722.1422
todd.clarke@kidder.com

TY CLARKE
Kidder Mathews
253.722.1419
ty.clarke@kidder.com

KIDDER.COM

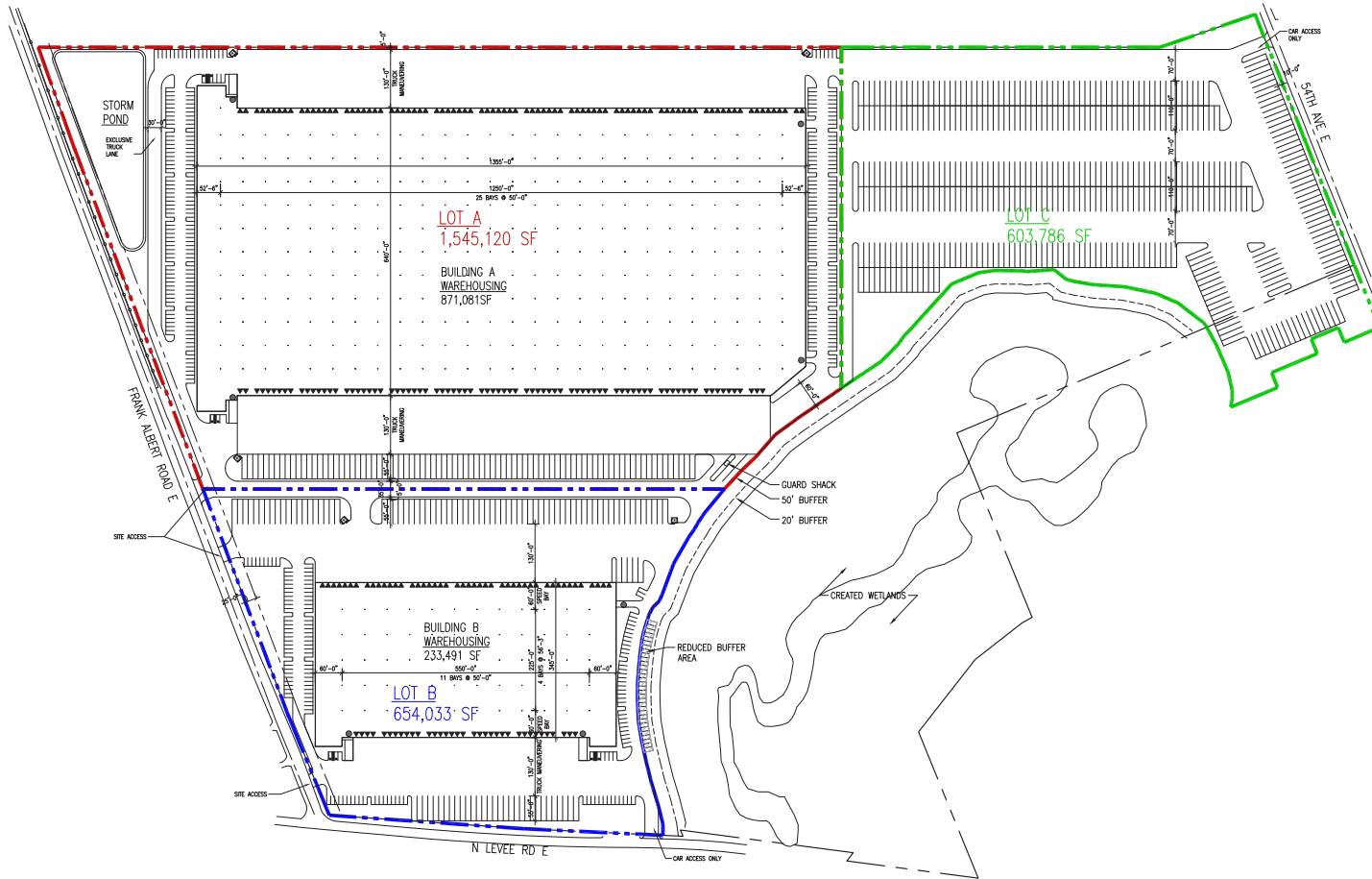
This information supplied herein is from sources we deem reliable. It is provided without any representation, warranty, or guarantee, expressed or implied as to its accuracy. Prospective Buyer or Tenant should conduct an independent investigation and verification of all matters deemed to be material, including, but not limited to, statements of income and expenses. Consult your attorney, accountant, or other professional advisor.



FOR LEASE

Puyallup Nation Logistics Center II

3105 FRANK ALBERT RD E, FIFE, WA



BUILDING A FEATURES

- 871,081 SF**
- 170 dock-doors**
- 4 grade-doors**
- 286 car parking**
- 441 dedicated trailer stalls**

BUILDING B FEATURES

- 233,491 SF**
- 81 dock-doors**
- 3 grade-doors**
- 162 car parking**
- 104 dedicated trailer stalls**

MATT WOOD
KBC Advisors
206.595.6814
matt.wood@kbcadvisors.com

TODD CLARKE
Kidder Mathews
253.722.1422
todd.clarke@kidder.com

TY CLARKE
Kidder Mathews
253.722.1419
ty.clarke@kidder.com

KIDDER.COM

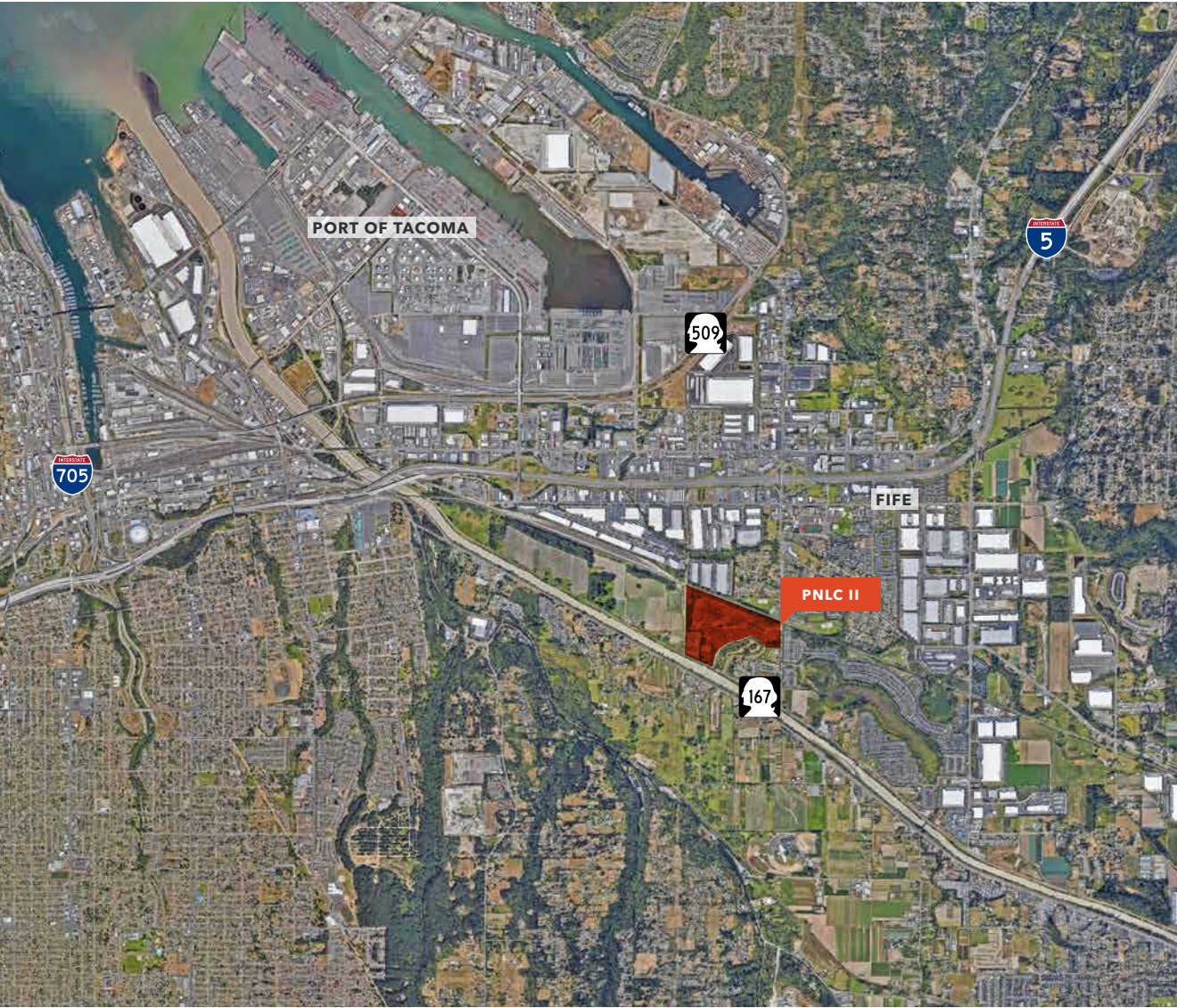
This information supplied herein is from sources we deem reliable. It is provided without any representation, warranty, or guarantee, expressed or implied as to its accuracy. Prospective Buyer or Tenant should conduct an independent investigation and verification of all matters deemed to be material, including, but not limited to, statements of income and expenses. Consult your attorney, accountant, or other professional advisor.



FOR LEASE

Puyallup Nation Logistics Center II

3105 FRANK ALBERT RD E, FIFE, WA



TIME EN ROUTE AND DRAYAGE COST

	Time	Drayage Cost
Port of Tacoma to Puyallup Industrial Corridor	5 min	\$285 + FSC
Port of Tacoma to Lakewood	15 min	\$285 + FSC
Port of Tacoma to Sumner	20 min	\$285 + FSC
Port of Tacoma to Kent	25 min	\$285 + FSC
Port of Tacoma to DuPont	25 min	\$285 + FSC
Port of Tacoma to Frederickson	30 min	\$385 + FSC
Port of Tacoma to Centralia	60 min	\$465 + FSC
Port of Tacoma to Portland	2 hr 45 min	\$850 + FSC

DRAYAGE RATES DO NOT INCLUDE

FUEL SERVICE CHARGE equal to 22.56%

\$40 PER DAY chassis rental fee

\$85 PER HOUR terminal wait fee, after 1 hour

KIDDER.COM

This information supplied herein is from sources we deem reliable. It is provided without any representation, warranty, or guarantee, expressed or implied as to its accuracy. Prospective Buyer or Tenant should conduct an independent investigation and verification of all matters deemed to be material, including, but not limited to, statements of income and expenses. Consult your attorney, accountant, or other professional advisor.

