

CENTRAL BUILDING

1721 HEWITT AVENUE | EVERETT, WA 98201

FOR LEASE



WESTLAKE
ASSOCIATES, INC.

JEFF AYERS

BROKER

206.505.9433

jeff@westlakeassociates.com

CENTRAL BUILDING

1721 HEWITT AVENUE | EVERETT, WA 98201

FOR LEASE

PROPERTY HIGHLIGHTS

- PRIME DOWNTOWN EVERETT LOCATION
- 146 - 3,053 SF AVAILABLE FOR LEASE
- FULL SERVICE LEASES
- LOCATED 1 BLOCK FROM SNOHOMISH COUNTY COURTHOUSE
- RARE, SMALL OFFICE SPACE AVAILABILITIES
- 3,053 SF GROUND FLOOR SPACE WITH STREET ACCESS, HIGH CEILINGS & LOTS OF NATURAL LIGHT

PROPERTY SUMMARY

Building Size	39,540 SF
SF Available For Lease	146 - 3,053 SF
Lease Type	Full Service
NNN Expenses	N/A
Parking	Street Parking & Paid Lot/Garage
Janitorial	3x per week
Utilities	W/S/G/E - Included
Year Built	1924
Zoning	B3
Elevator	Yes



CENTRAL BUILDING

1721 HEWITT AVENUE | EVERETT, WA 98201

FOR LEASE

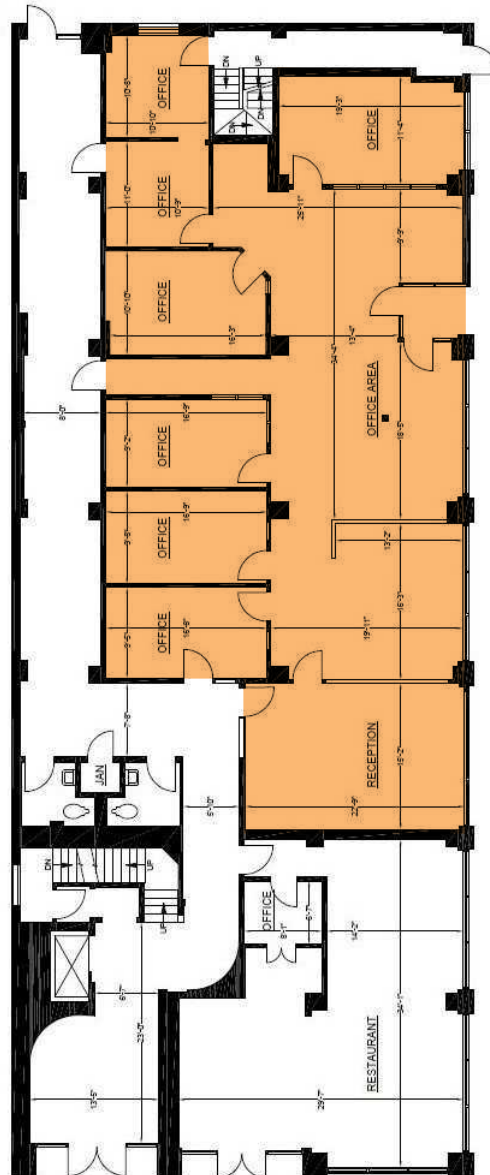
SPACE AVAILABILITY

SUITE #	SQUARE FEET	MONTHLY RENT
100	3,053 SF	\$6,360
305	238 SF	\$397
306	238 SF	\$397
307	231 SF	\$385
308	236 SF	\$393
309	234 SF	\$390
310	239 SF	\$398
312 - 314	705 SF	\$1,175
313	231 SF	\$385
318	238 SF	\$397
319	238 SF	\$397
402	168 SF	\$350
405	186 SF	\$388
407	662 SF	\$1,103
409 - 410	476 SF	\$793
411	391 SF	\$652
415	529 SF	\$882
416	520 SF	\$867
419	161 SF	\$335
422	163 SF	\$340
512 - 514	500 SF	\$833
612	184 SF	\$383

1721 HEWITT AVENUE | EVERETT, WA 98201

FLOOR PLAN

1ST FLOOR



CENTRAL BUILDING

1721 HEWITT AVENUE | EVERETT, WA 98201

FOR LEASE

FLOOR PLAN 3RD FLOOR

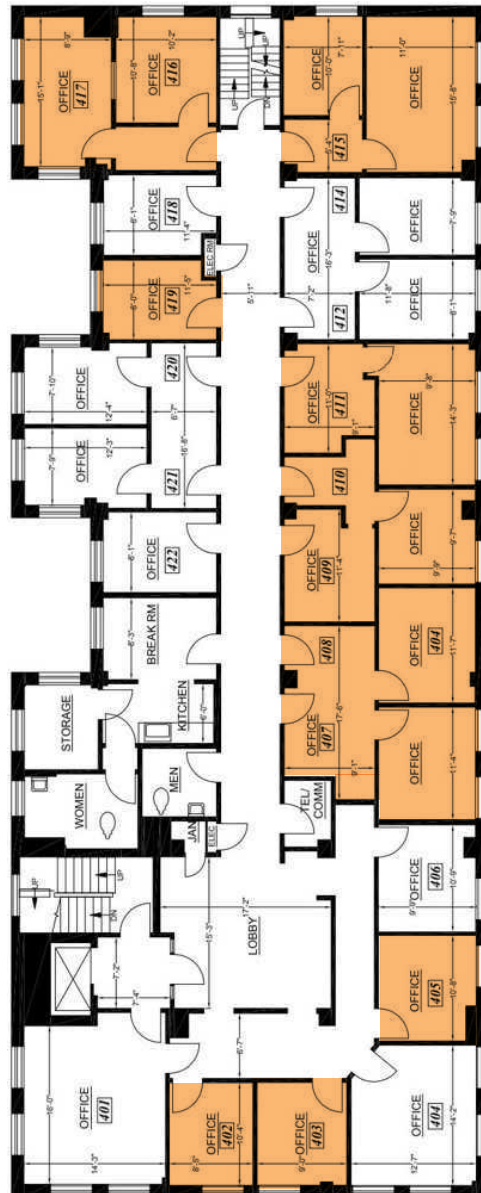


CENTRAL BUILDING

1721 HEWITT AVENUE | EVERETT, WA 98201

FOR LEASE

FLOOR PLAN 4TH FLOOR

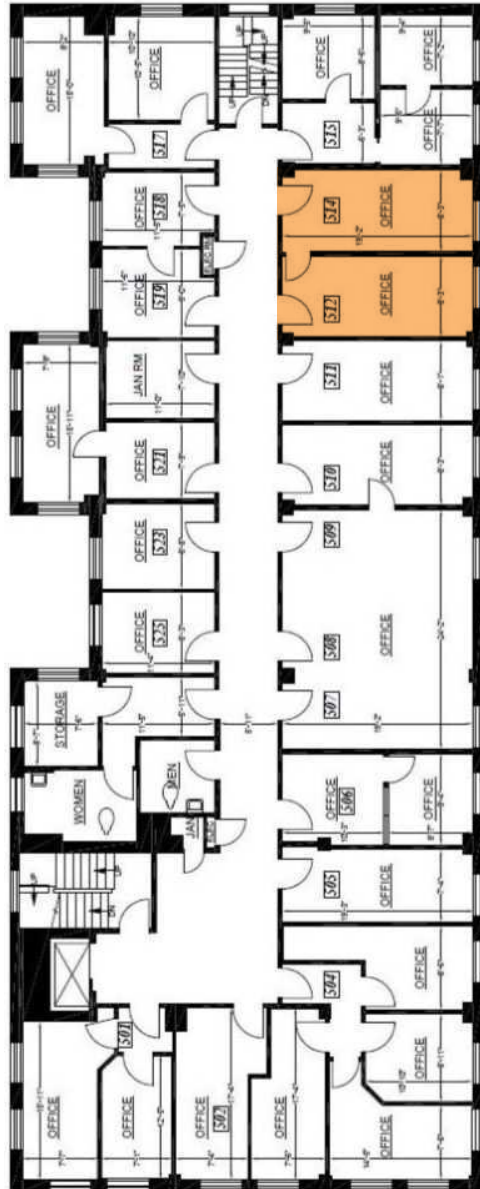


CENTRAL BUILDING

1721 HEWITT AVENUE | EVERETT, WA 98201

FOR LEASE

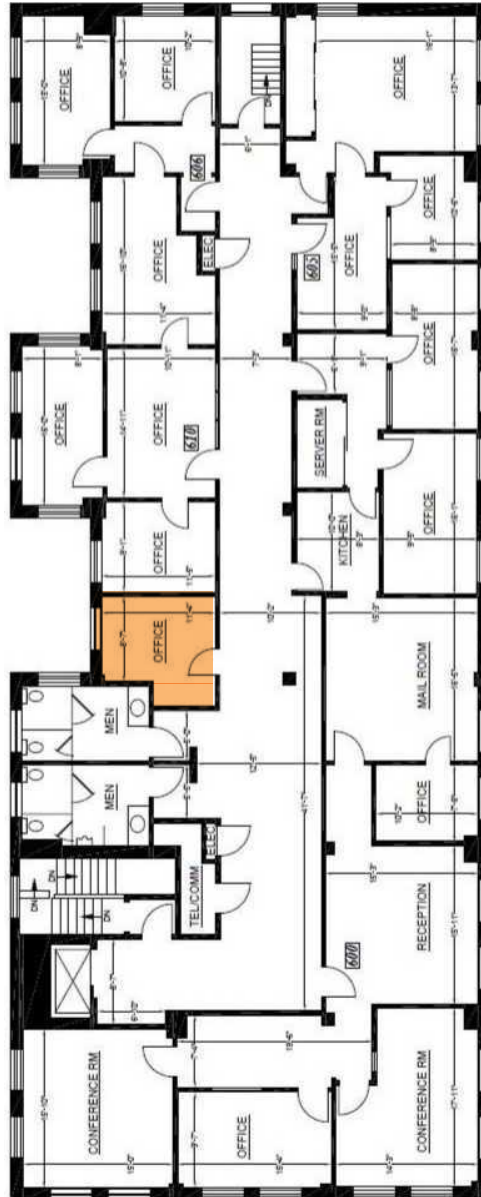
FLOOR PLAN 5TH FLOOR



1721 HEWITT AVENUE | EVERETT, WA 98201

FLOOR PLAN

6TH FLOOR



JEFF AYERS | (206) 505-9433 | JEFF@WESTLAKEASSOCIATES.COM
1200 WESTLAKE AVE N, STE 310 • SEATTLE, WA 98109