

CENTRAL BUILDING

1721 HEWITT AVENUE | EVERETT, WA 98201

FOR LEASE



WESTLAKE
ASSOCIATES, INC.

JEFF AYERS

BROKER

206.505.9433

jeff@westlakeassociates.com

CENTRAL BUILDING

1721 HEWITT AVENUE | EVERETT, WA 98201

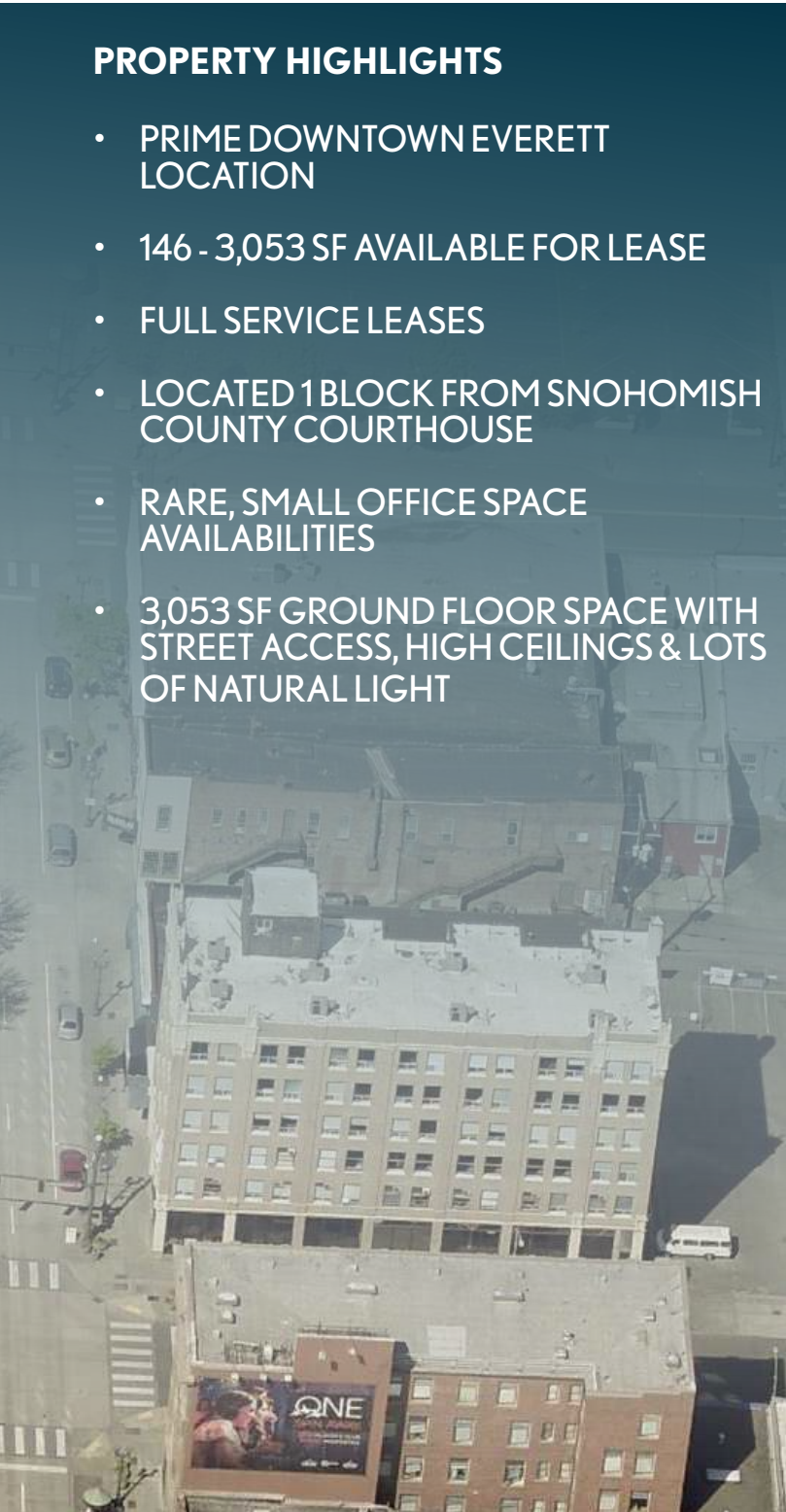
FOR LEASE

PROPERTY HIGHLIGHTS

- PRIME DOWNTOWN EVERETT LOCATION
- 146 - 3,053 SF AVAILABLE FOR LEASE
- FULL SERVICE LEASES
- LOCATED 1 BLOCK FROM SNOHOMISH COUNTY COURTHOUSE
- RARE, SMALL OFFICE SPACE AVAILABILITIES
- 3,053 SF GROUND FLOOR SPACE WITH STREET ACCESS, HIGH CEILINGS & LOTS OF NATURAL LIGHT

PROPERTY SUMMARY

| | |
|------------------------|----------------------------------|
| Building Size | 39,540 SF |
| SF Available For Lease | 146 - 3,053 SF |
| Lease Type | Full Service |
| NNN Expenses | N/A |
| Parking | Street Parking & Paid Lot/Garage |
| Janitorial | 3x per week |
| Utilities | W/S/G/E - Included |
| Year Built | 1924 |
| Zoning | B3 |
| Elevator | Yes |



CENTRAL BUILDING

1721 HEWITT AVENUE | EVERETT, WA 98201

FOR LEASE

SPACE AVAILABILITY

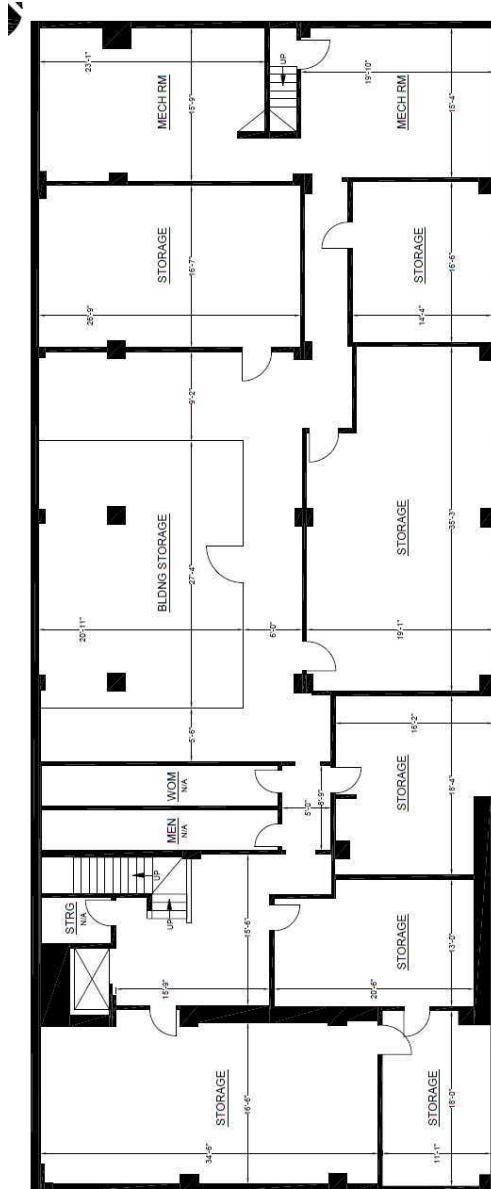
| SUITE # | SQUARE FEET | MONTHLY RENT |
|-----------|-------------|--------------|
| Basement | 5,578 SF | \$2,231 |
| 100 | 3,053 SF | \$6,360 |
| 305 | 249 SF | \$415 |
| 306 | 249 SF | \$415 |
| 307 | 243 SF | \$405 |
| 308 | 247 SF | \$412 |
| 309 | 246 SF | \$410 |
| 310 | 250 SF | \$417 |
| 312 - 314 | 644 SF | \$1,073 |
| 315 | 457 SF | \$762 |
| 316 | 289 SF | \$482 |
| 318 | 249 SF | \$415 |
| 319 | 249 SF | \$415 |
| 402 | 168 SF | \$350 |
| 407 | 662 SF | \$1,103 |
| 409 - 410 | 476 SF | \$793 |
| 411 | 391 SF | \$652 |
| 415 | 529 SF | \$882 |
| 416 | 520 SF | \$867 |
| 419 | 161 SF | \$335 |
| 422 | 163 SF | \$340 |
| 512 - 514 | 500 SF | \$833 |
| 515 | 445 SF | \$742 |
| 605 | 841 SF | \$1,752 |

CENTRAL BUILDING

1721 HEWITT AVENUE | EVERETT, WA 98201

FOR LEASE

FLOOR PLAN BASEMENT

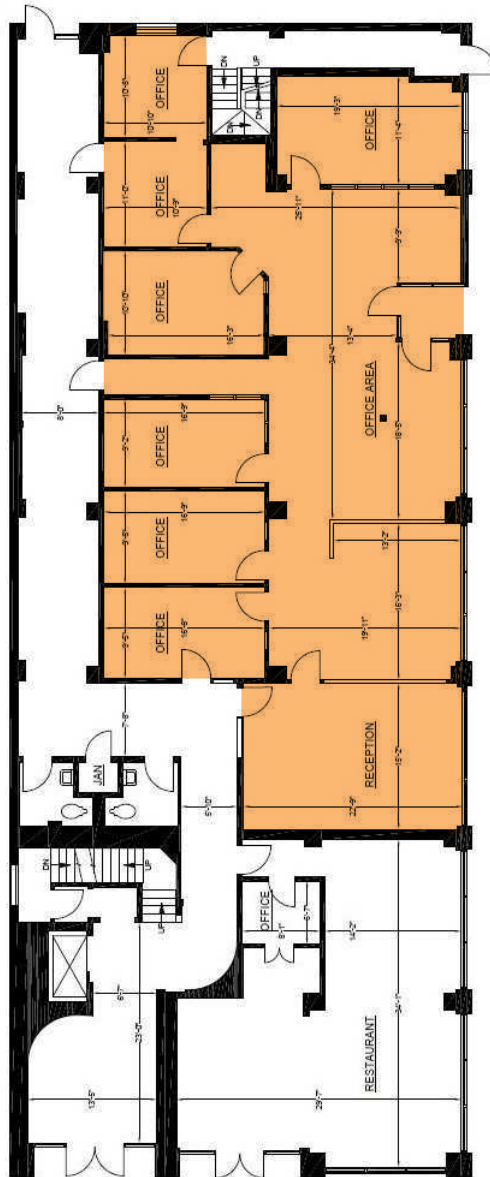


CENTRAL BUILDING

1721 HEWITT AVENUE | EVERETT, WA 98201

FOR LEASE

FLOOR PLAN 1ST FLOOR

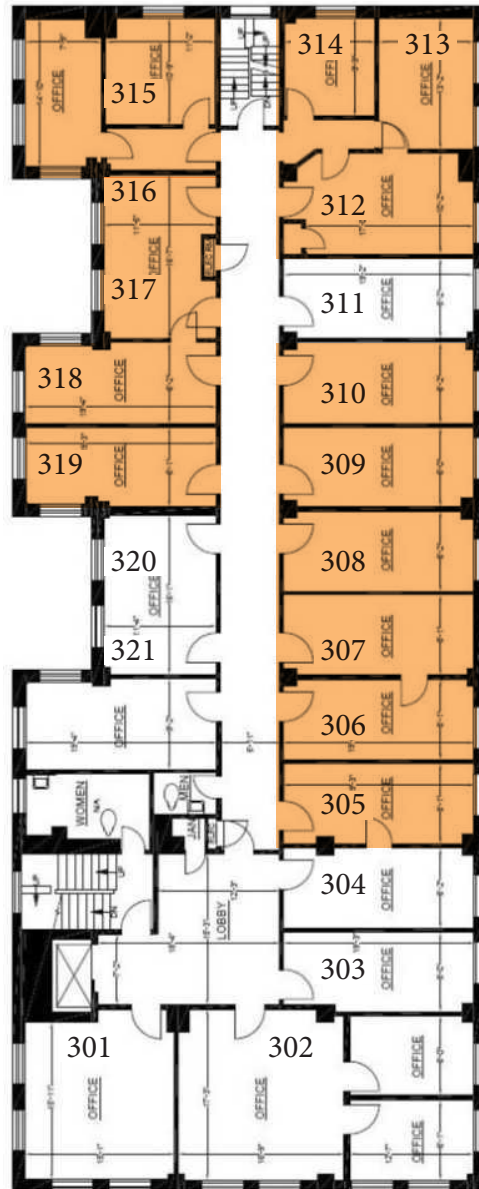


CENTRAL BUILDING

1721 HEWITT AVENUE | EVERETT, WA 98201

FOR LEASE

FLOOR PLAN 3RD FLOOR

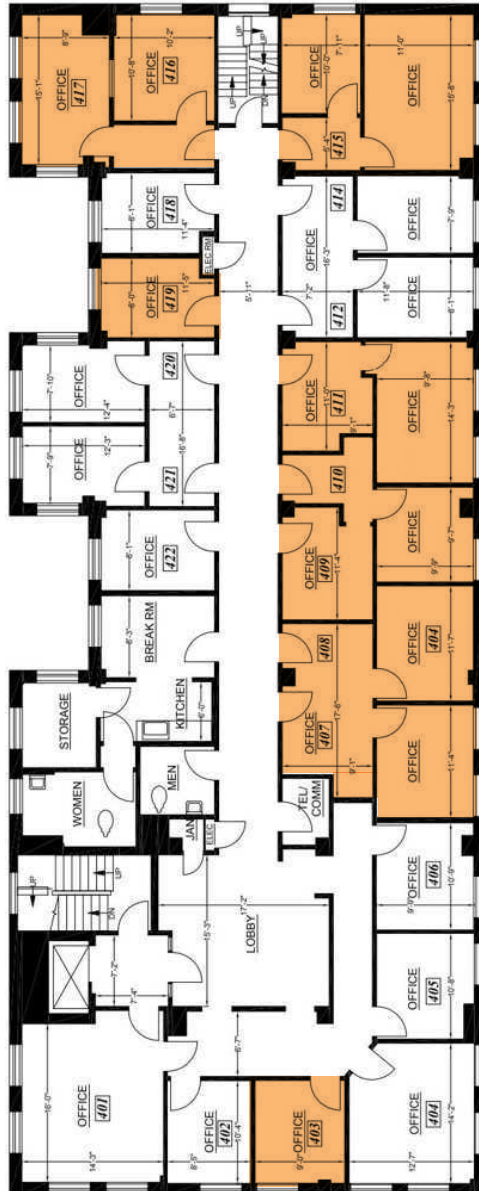


CENTRAL BUILDING

1721 HEWITT AVENUE | EVERETT, WA 98201

FOR LEASE

FLOOR PLAN 4TH FLOOR

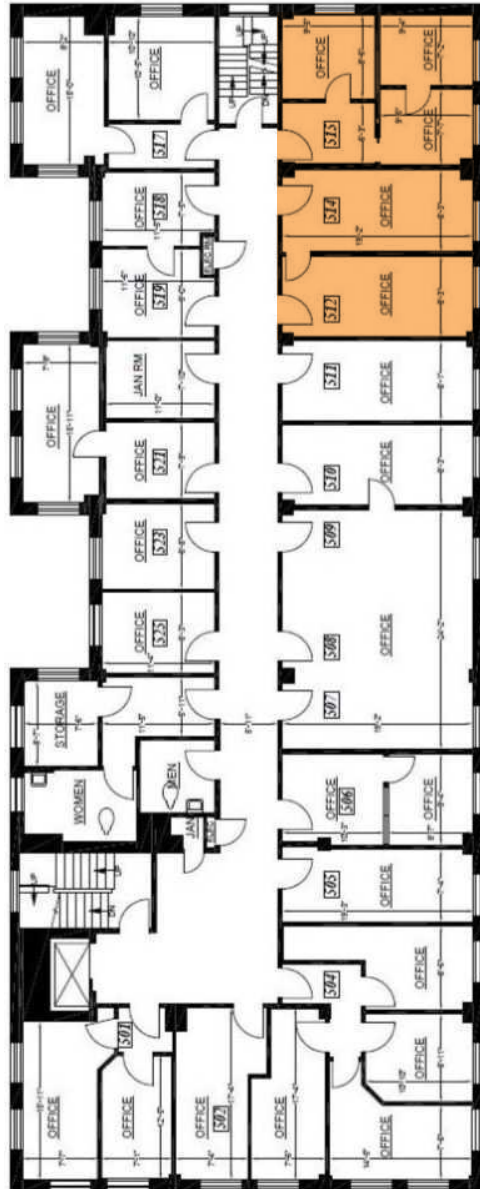


CENTRAL BUILDING

1721 HEWITT AVENUE | EVERETT, WA 98201

FOR LEASE

FLOOR PLAN 5TH FLOOR

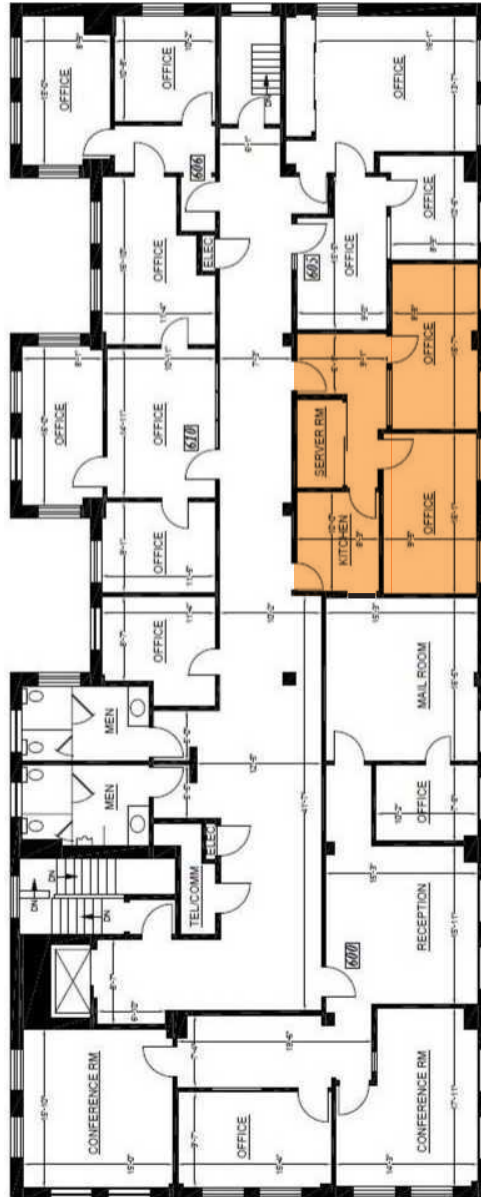


CENTRAL BUILDING

1721 HEWITT AVENUE | EVERETT, WA 98201

FOR LEASE

FLOOR PLAN 6TH FLOOR



DISCLAIMER: This information has been secured from sources we believe to be reliable, but we make no representations or warranties, expressed or implied, as to the accuracy of the information. References to square footage, age, and numbers are approximate. Parties must verify the information and bear all risk for any inaccuracies.