



FOR LEASE

909 Pacific

909 PACIFIC AVE | Tacoma, WA

6,000 SF second floor office space



Kidder
Mathews

FOR LEASE

909 Pacific

909 PACIFIC AVE, TACOMA, WA



Professional Office Space

SUITE 200 6,000 SF available

\$25.00 PSF per year, full service

READY TO GO professional office buildout

LOCATED in the heart of Downtown Tacoma with a walk score of 99

ONE BLOCK from Link Light Rail with direct connection to Tacoma Station Park & Ride and Sounder Train

DOWNTOWN TACOMA over \$1 billion being invested in downtown and surrounding area for multi-family and retail

WILL FRAME
253.722.1412
will.frame@kidder.com

DREW FRAME
253.722.1433
drew.frame@kidder.com

KIDDER.COM

This information supplied herein is from sources we deem reliable. It is provided without any representation, warranty, or guarantee, expressed or implied as to its accuracy. Prospective Buyer or Tenant should conduct an independent investigation and verification of all matters deemed to be material, including, but not limited to, statements of income and expenses. Consult your attorney, accountant, or other professional advisor.



FOR LEASE

909 Pacific

909 PACIFIC AVE, TACOMA, WA



KIDDER.COM

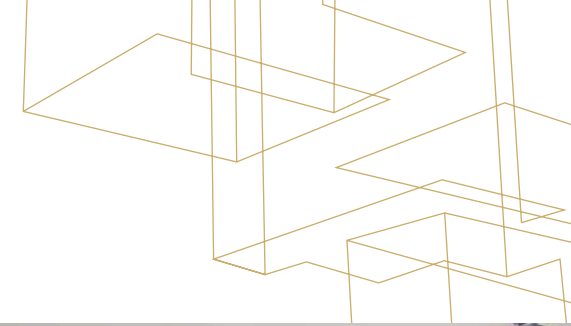
This information supplied herein is from sources we deem reliable. It is provided without any representation, warranty, or guarantee, expressed or implied as to its accuracy. Prospective Buyer or Tenant should conduct an independent investigation and verification of all matters deemed to be material, including, but not limited to, statements of income and expenses. Consult your attorney, accountant, or other professional advisor.

km Kidder Mathews

FOR LEASE

909 Pacific

909 PACIFIC AVE, TACOMA, WA



KIDDER.COM

This information supplied herein is from sources we deem reliable. It is provided without any representation, warranty, or guarantee, expressed or implied as to its accuracy. Prospective Buyer or Tenant should conduct an independent investigation and verification of all matters deemed to be material, including, but not limited to, statements of income and expenses. Consult your attorney, accountant, or other professional advisor.

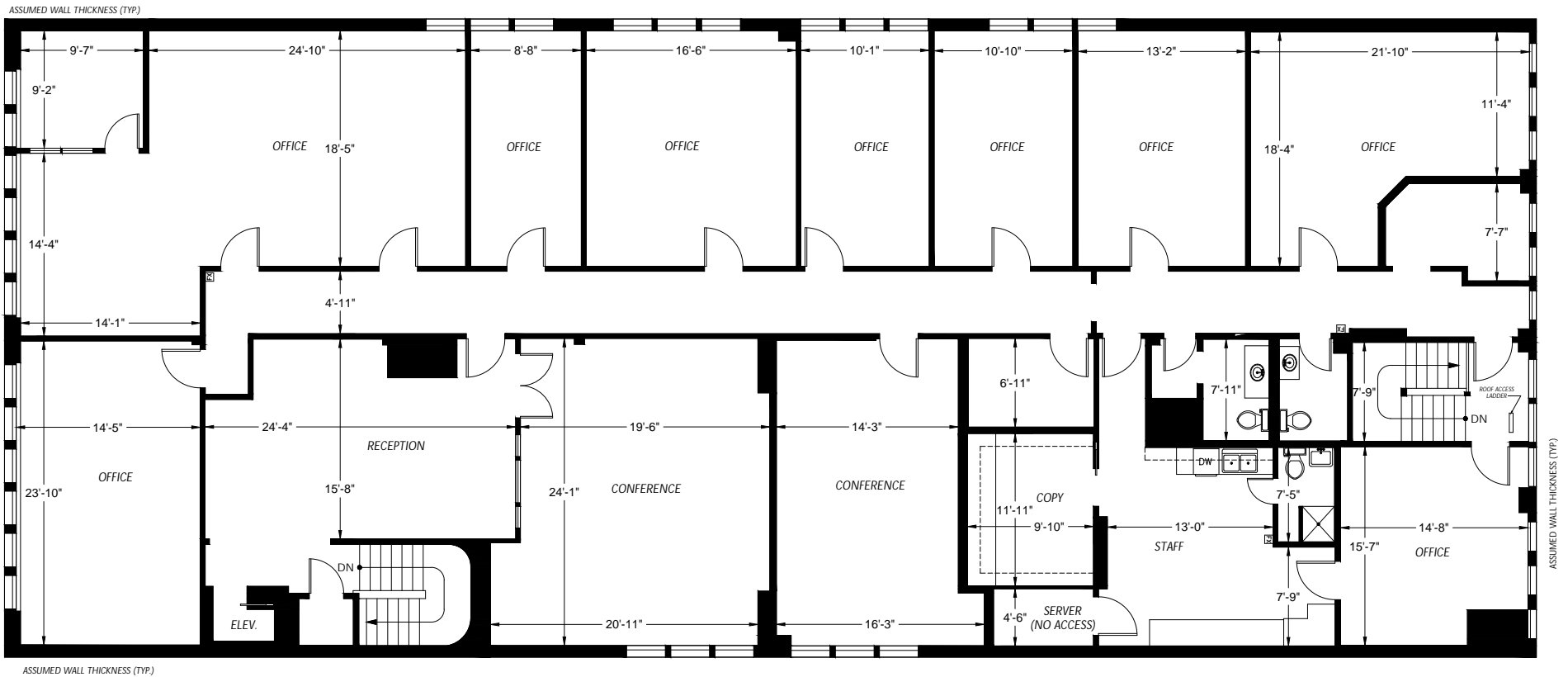
 **Kidder
Mathews**

FOR LEASE

909 Pacific

909 PACIFIC AVE, TACOMA, WA

Floor Plan | Second Floor | 6,000 SF



KIDDER.COM

This information supplied herein is from sources we deem reliable. It is provided without any representation, warranty, or guarantee, expressed or implied as to its accuracy. Prospective Buyer or Tenant should conduct an independent investigation and verification of all matters deemed to be material, including, but not limited to, statements of income and expenses. Consult your attorney, accountant, or other professional advisor.

