



FOR LEASE

Bethel Station Fred Meyer

224TH STREET EAST & MOUNTAIN HIGHWAY | SPANAWAY, WA



1,400 SF inline

1,634 SF endcap

21,000 CPD (2017)

ANCHORED by Fred Meyer & Rite Aid

EXCELLENT frontage, access and visibility from SR-7

OTHER TENANTS include:

- Burger King
- State Farm
- Papa Murphy's
- Anytime Fitness
- Great Clips
- Jiffy Lube
- Subway
- Dollar Tree

\$22.00 - \$24.00 PSF, NNN

DEMOGRAPHICS

	1 Mile	3 Miles	5 Miles
Population	3,476	36,831	92,826
Median HH Income	\$53,082	\$67,684	\$68,829

This information supplied herein is from sources we deem reliable. It is provided without any representation, warranty, or guarantee, expressed or implied as to its accuracy. Prospective Buyer or Tenant should conduct an independent investigation and verification of all matters deemed to be material, including, but not limited to, statements of income and expenses. Consult your attorney, accountant, or other professional advisor.

BRIAN ENGELKING
253.722.1418
brian.engelking@kidder.com

KIDDER.COM

Kidder Mathews

FOR LEASE

Bethel Station Fred Meyer

224TH STREET EAST & MOUNTAIN HIGHWAY | SPANAWAY, WA



KIDDER.COM

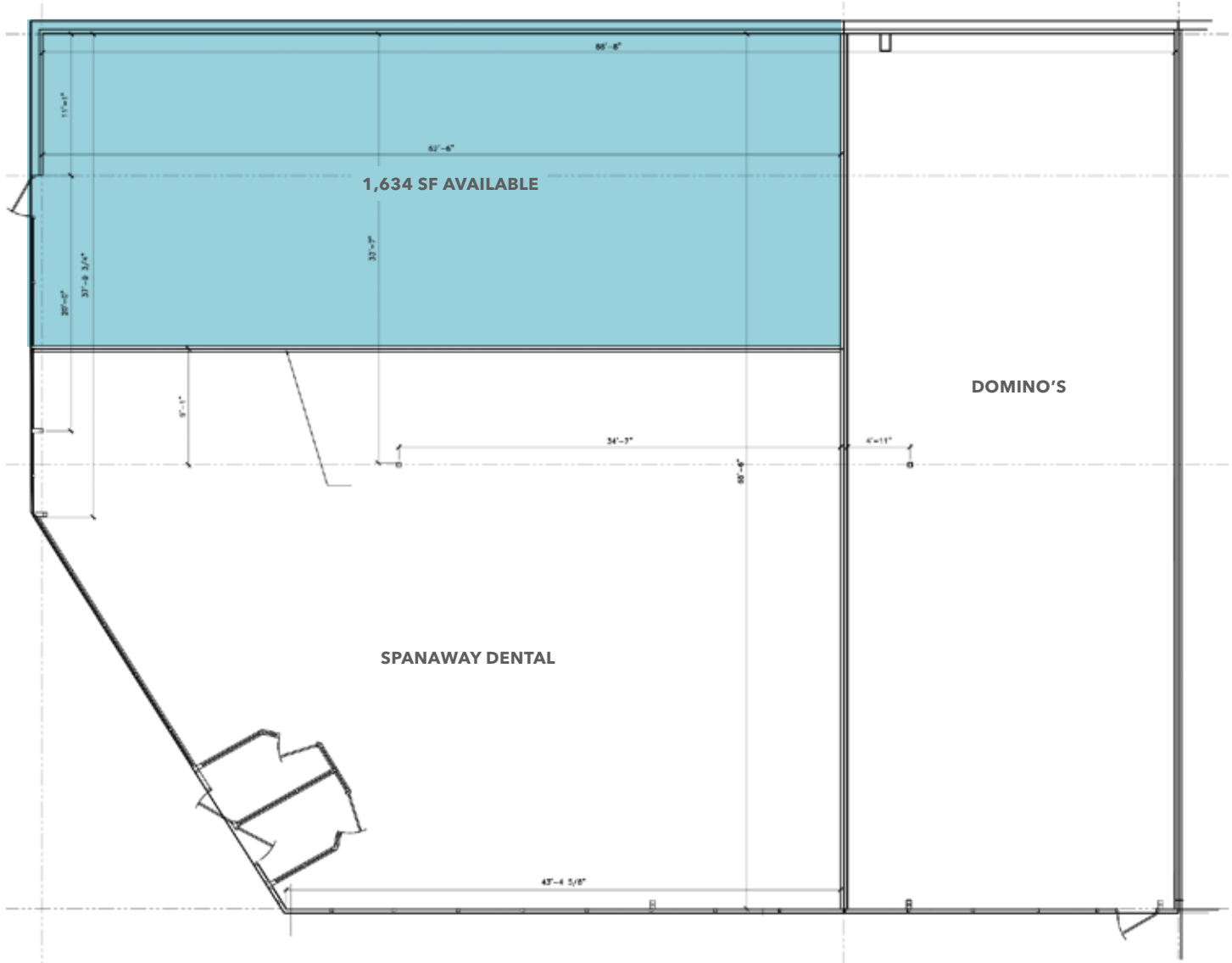
This information supplied herein is from sources we deem reliable. It is provided without any representation, warranty, or guarantee, expressed or implied as to its accuracy. Prospective Buyer or Tenant should conduct an independent investigation and verification of all matters deemed to be material, including, but not limited to, statements of income and expenses. Consult your attorney, accountant, or other professional advisor.

km Kidder Mathews

FOR LEASE

Bethel Station Fred Meyer

224TH STREET EAST & MOUNTAIN HIGHWAY | SPANAWAY, WA



BRIAN ENGELKING

253.722.1418

brian.engelking@kidder.com

KIDDER.COM

This information supplied herein is from sources we deem reliable. It is provided without any representation, warranty, or guarantee, expressed or implied as to its accuracy. Prospective Buyer or Tenant should conduct an independent investigation and verification of all matters deemed to be material, including, but not limited to, statements of income and expenses. Consult your attorney, accountant, or other professional advisor.

