

Kaylen CENTER

821-827 BELLEVUE WAY NE
BELLEVUE, WASHINGTON



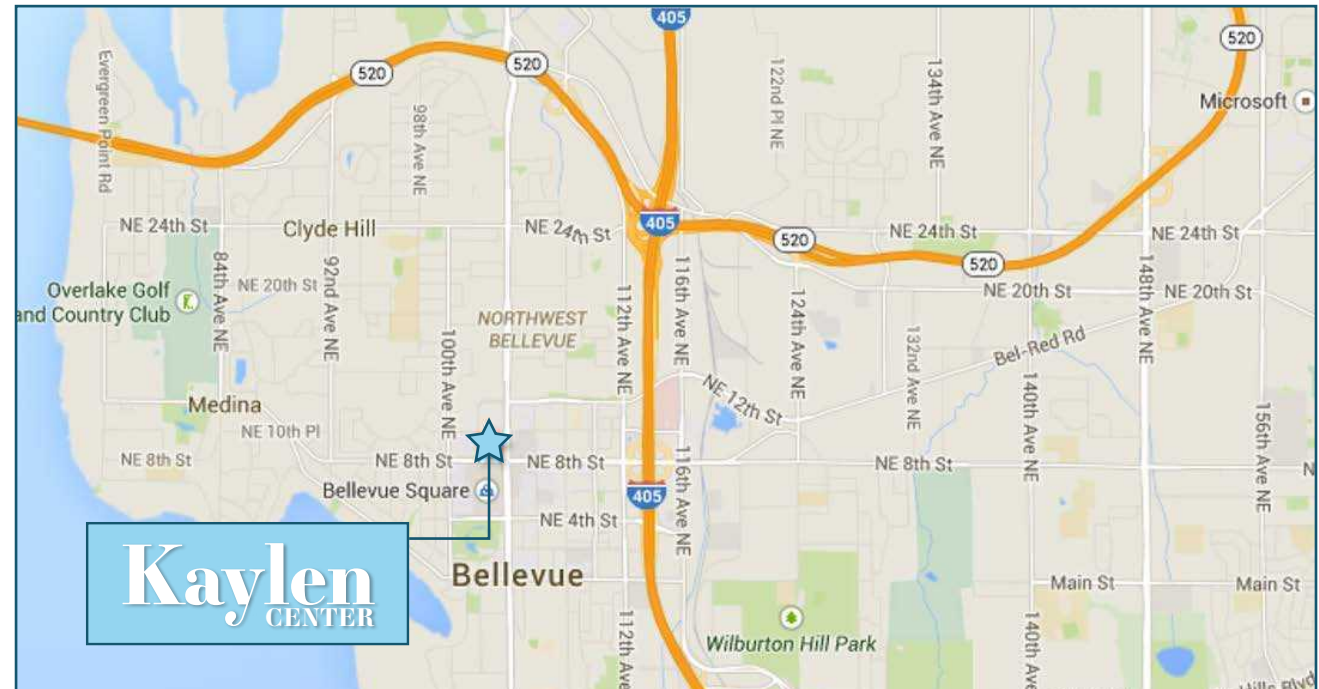
**PREMIUM DOWNTOWN
BELLEVUE LOCATION**

AVAILABLE SPACE

FLOOR / SUITE	SIZE	AVAILABILITY
2 / 203	APPROX. 4,656 SF	60 DAYS' NOTICE
2 / 205	APPROX. 3,128 SF	60 DAYS' NOTICE

PROPERTY FEATURES

- » Premium location across the street from Bellevue Square, Lincoln Square and Bellevue Place amenities
- » No load factor
- » Rental Rate: \$28.00/RSF, NNN
- » Estimated 2020 NNNs = \$12.57 per RSF, exclusive of janitorial
- » Comcast and CenturyLink services offered
- » Flexible lease terms
- » Owned and managed by Kemper Development Company



The information contained herein has been given to us by the owner or sources that we deem reliable. We have no reason to doubt its accuracy, but we do not guarantee it. Prospective tenants should carefully verify all information contained herein.

Kaylen CENTER

821-827 BELLEVUE WAY NE
BELLEVUE, WASHINGTON

For further information or to schedule a
tour, please contact:

CLAYTON HOLM

425.274.4287

holm@broderickgroup.com

JIM KINERK

425.646.5221

kinerk@broderickgroup.com

PAUL SWEENEY

425.646.5225

sweeney@broderickgroup.com

BRODERICK
GROUP

10500 NE 8th Street, Suite 900
Bellevue, Washington 98004
main 425.646.3444
broderickgroup.com

PREMIUM DOWNTOWN BELLEVUE LOCATION

Kaylen CENTER

821-827 BELLEVUE WAY NE
BELLEVUE, WASHINGTON

For further information or to schedule a tour, please contact:

CLAYTON HOLM

425.274.4287

holm@broderickgroup.com

JIM KINERK

425.646.5221

kinerk@broderickgroup.com

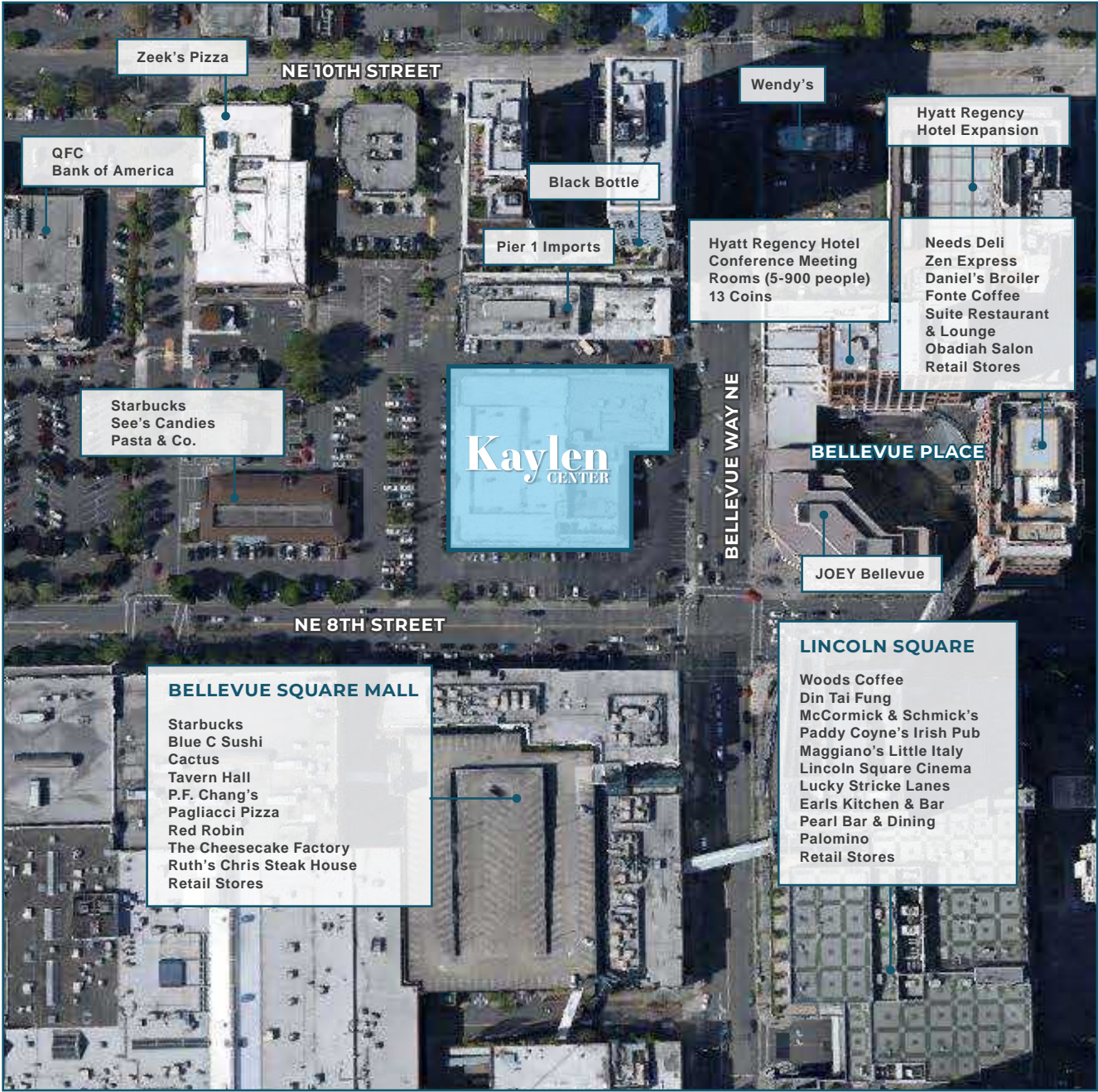
PAUL SWEENEY

425.646.5225

sweeney@broderickgroup.com



10500 NE 8th Street, Suite 900
Bellevue, Washington 98004
main 425.646.3444
broderickgroup.com



The information contained herein has been given to us by the owner or sources that we deem reliable. We have no reason to doubt its accuracy, but we do not guarantee it. Prospective tenants should carefully verify all information contained herein.

FLOOR 2 | SUITE 203

APPROX. 4,656 SF

Kaylen CENTER

821-827 BELLEVUE WAY NE
BELLEVUE, WASHINGTON

For further information or to schedule a
tour, please contact:

CLAYTON HOLM

425.274.4287

holm@broderickgroup.com

JIM KINERK

425.646.5221

kinerk@broderickgroup.com

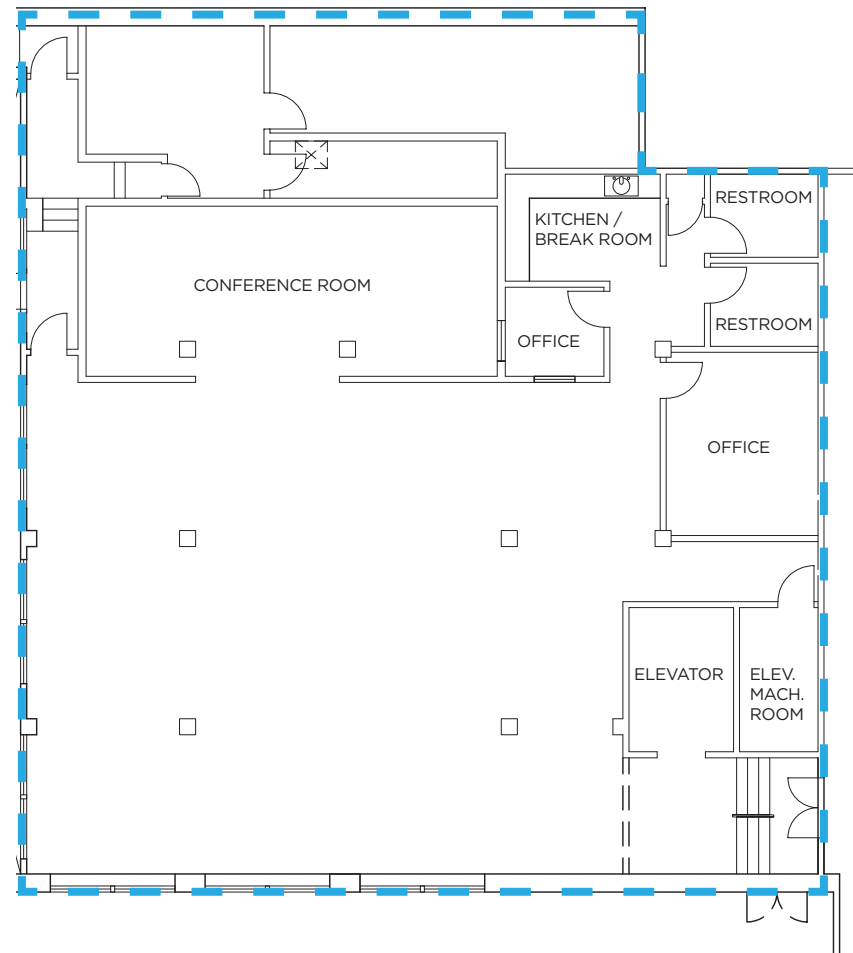
PAUL SWEENEY

425.646.5225

sweeney@broderickgroup.com

BRODERICK
· GROUP ·

10500 NE 8th Street, Suite 900
Bellevue, Washington 98004
main 425.646.3444
broderickgroup.com



The information contained herein has been given to us by the owner or sources that we deem reliable. We have no reason to doubt its accuracy, but we do not guarantee it. Prospective tenants should carefully verify all information contained herein.

FLOOR 2 | SUITE 205

APPROX. 3,128 SF

Kaylen CENTER

821-827 BELLEVUE WAY NE
BELLEVUE, WASHINGTON

For further information or to schedule a
tour, please contact:

CLAYTON HOLM

425.274.4287

holm@broderickgroup.com

JIM KINERK

425.646.5221

kinerk@broderickgroup.com

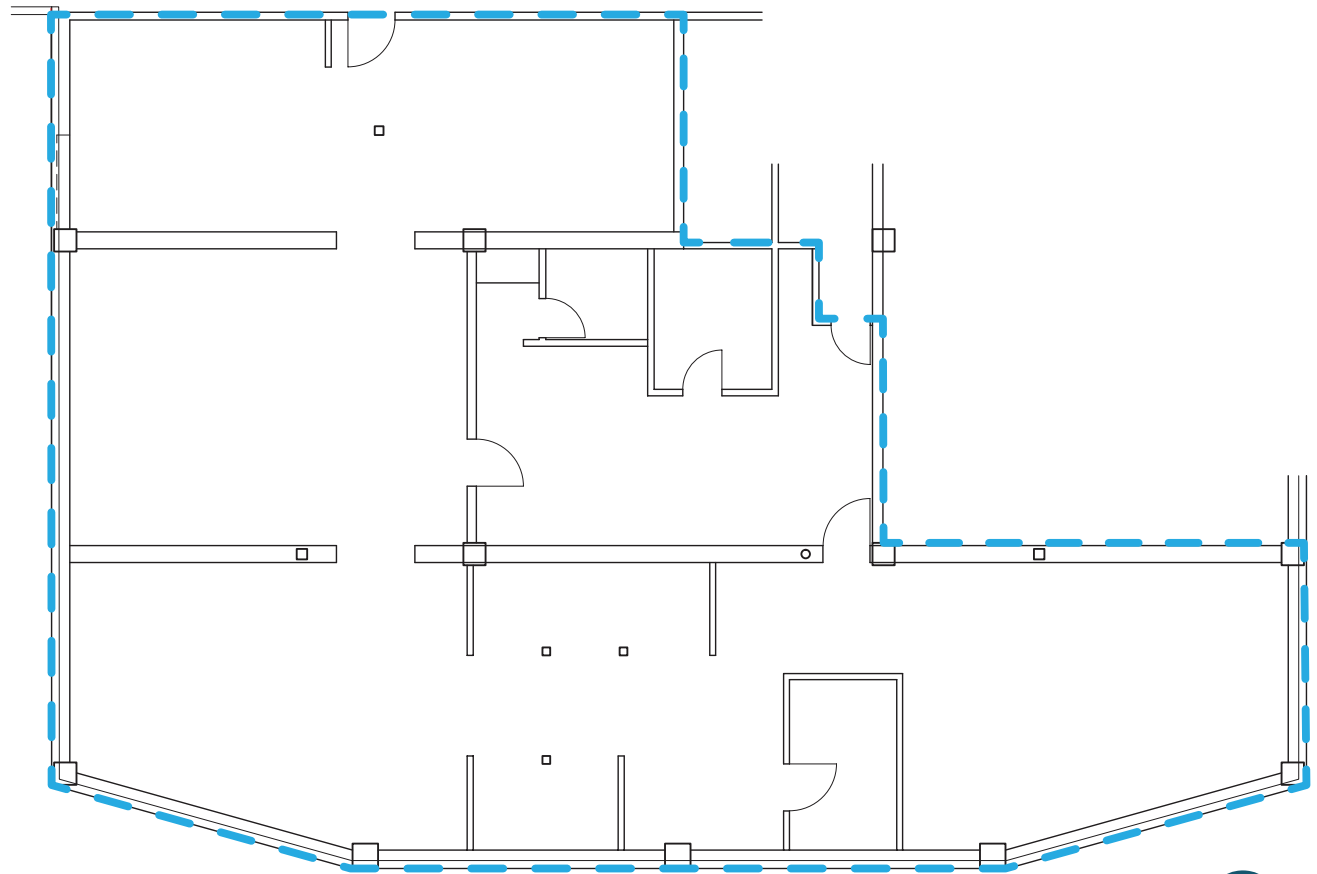
PAUL SWEENEY

425.646.5225

sweeney@broderickgroup.com

BRODERICK
· GROUP ·

10500 NE 8th Street, Suite 900
Bellevue, Washington 98004
main 425.646.3444
broderickgroup.com



The information contained herein has been given to us by the owner or sources that we deem reliable. We have no reason to doubt its accuracy, but we do not guarantee it. Prospective tenants should carefully verify all information contained herein.