



# ASPIRE 11

FOR LEASE | 1023 MARTIN LUTHER KING JR WAY | TACOMA, WA



FOR LEASE

# Aspire 11

1023 MARTIN LUTHER KING JR WAY | TACOMA, WA



**NEW** Mixed-Use Retail Development on the corner of MLK Jr Way and S 11th St

**BASE RENT** \$32.00 psf NNN

**ADJACENT** to the new Tacoma Light Rail Station

**AMPLE** retail parking on site

**UP TO** 16,991 SF of retail divisible to 1,000 SF

**INFRASTRUCTURE** includes hood chaises and grease interceptor

**REJUVENATED** neighborhood with over 500 newly built apartments within a block

**COMPLETED** Spring 2021

## DEMOGRAPHICS

	1 Mile	3 Miles	5 Miles
Population	28,932	108,958	256,534
Median HH Income	\$47,195	\$56,732	\$60,165

**JEFF KRAFT**  
253.722.1405  
jeff.kraft@kidder.com

**CRAMER FOSTER**  
253.722.1423  
cramer.foster@kidder.com

KIDDER.COM

This information supplied herein is from sources we deem reliable. It is provided without any representation, warranty, or guarantee, expressed or implied as to its accuracy. Prospective Buyer or Tenant should conduct an independent investigation and verification of all matters deemed to be material, including, but not limited to, statements of income and expenses. Consult your attorney, accountant, or other professional advisor.

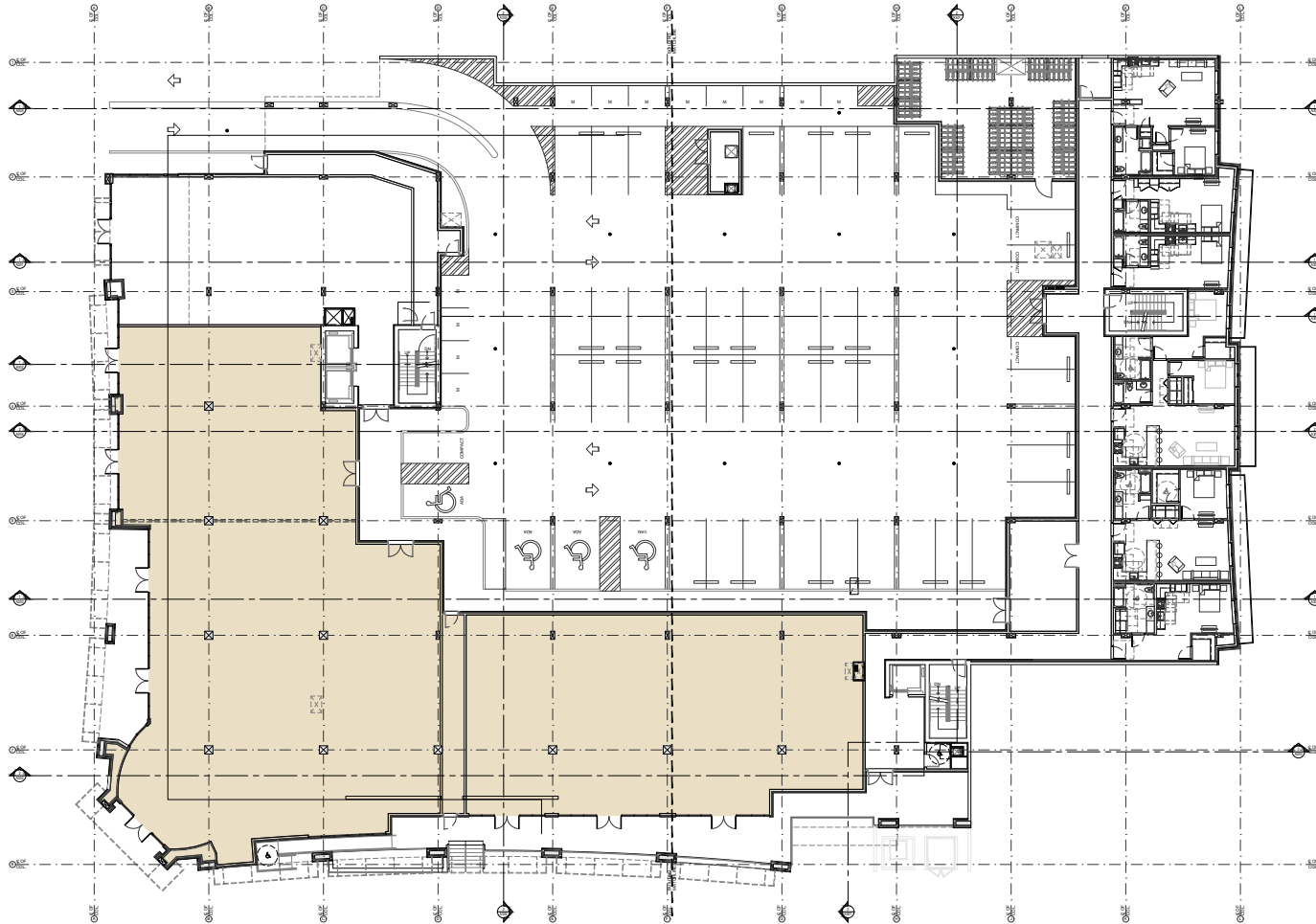


FOR LEASE

# Aspire 11

1023 MARTIN LUTHER KING JR WAY | TACOMA, WA

## Retail Floor Plan



KIDDER.COM

This information supplied herein is from sources we deem reliable. It is provided without any representation, warranty, or guarantee, expressed or implied as to its accuracy. Prospective Buyer or Tenant should conduct an independent investigation and verification of all matters deemed to be material, including, but not limited to, statements of income and expenses. Consult your attorney, accountant, or other professional advisor.

**km** Kidder  
Mathews