

Office for Lease COMMENCEMENT BANK BUILDING

Suite 200 | 1102 Commerce Street, Tacoma, WA 98402

**LEE &
ASSOCIATES**
COMMERCIAL REAL ESTATE SERVICES



LISTING DATA

AVAILABLE SF: 3,087 SF
LEASE RATE: \$24.00 SF/Yr (Gross)

COMMENTS

Nicely finished office space. Full floor with street entrance. Well located in central downtown Tacoma at 11th Street and Broadway Avenue.

ACCESS: Prime access from I-5 North and South via I-705. Street access from the fountain courtyard at 11th Street and Broadway Avenue.

TRANSIT: Less than 1 block from Link Light Rail and bus stations.

PARKING: On site parking with additional parking across the street.

SURROUNDING AREA: Short walking distance from Tacoma Farmer's Market (May-Oct), coffee shops, restaurants, shopping, YMCA, and Pacific Avenue corridor.



CONTACT

Tom Brown

tbrown@lee-associates.com
D 253.444.3024

Eric Cederstrand

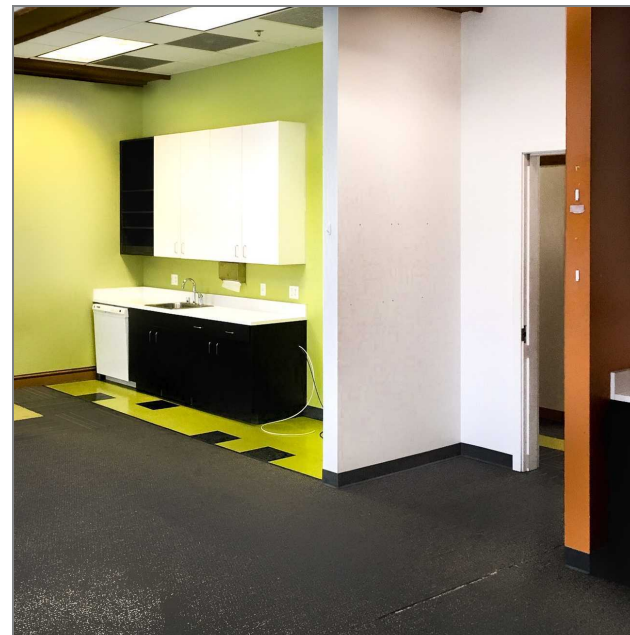
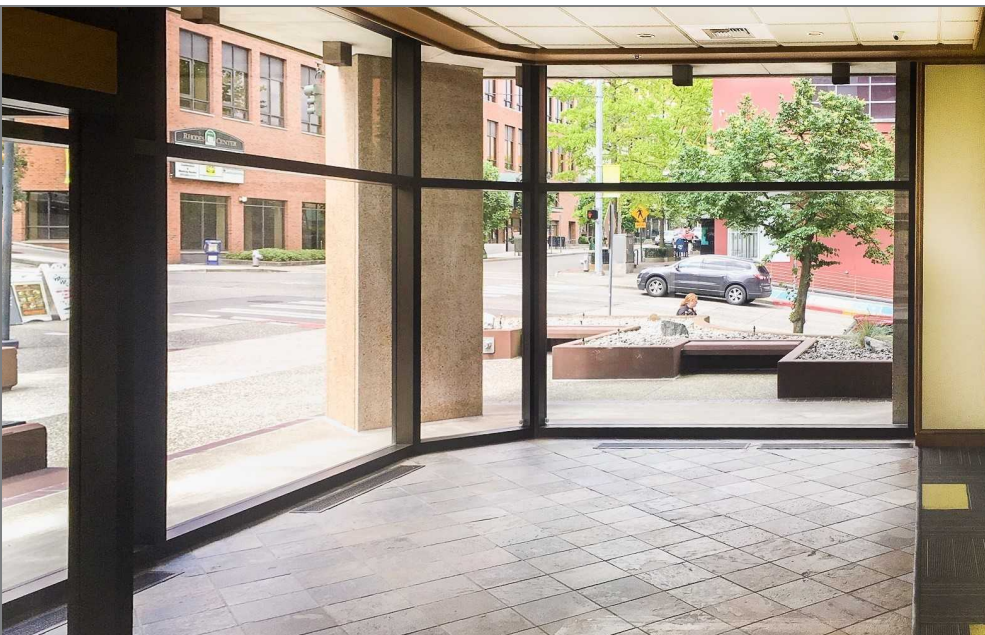
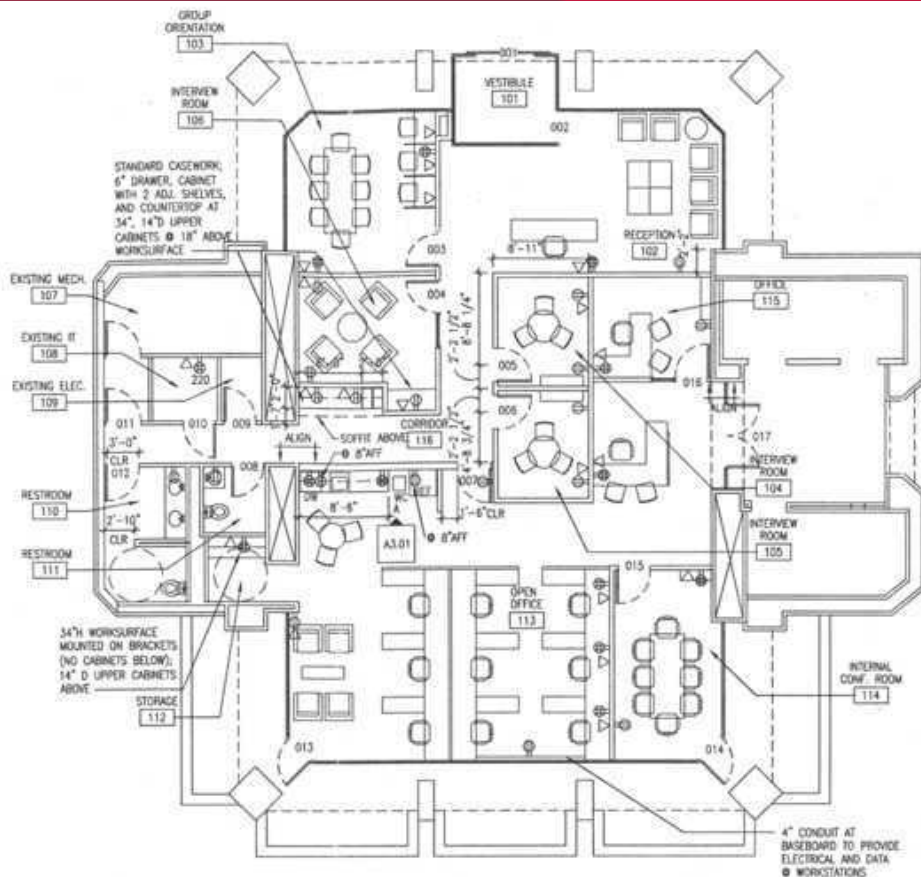
ecederstrand@neilwalter.com
D 253.779.2428

W
**NEIL WALTER
COMPANY**

We obtained the information above from sources we believe to be reliable. However, we have not verified its accuracy and make no guarantee, warranty or representation about it. It is submitted subject to the possibility of errors, omissions, change of price, rental or other conditions, prior sale, lease or financing, or withdrawal without notice. We include projections, opinions, assumptions or estimates for example only, and they may not represent current or future performance of the property. You and your tax and legal advisors should conduct your own investigation of the property and transaction.

Office for Lease COMMENCEMENT BANK BUILDING

Suite 200 | 1102 Commerce Street, Tacoma, WA 98402



CONTACT

Tom Brown

tbrown@lee-associates.com

D 253.444.3024

Eric Cederstrand

ecederstrand@neilwalter.com

D 253.779.2428

