

# FOR LEASE

427 W Sinto Ave  
Spokane, WA 99201



NORTH BANK

OFFICE

SPACE

AVAILABLE

## PROPERTY INFORMATION

This prime office location is just minutes away from Downtown Spokane and the Spokane Arena and within close proximity to dining, entertainment and shopping! Top floor suite with incredible views of downtown.

## AVAILABLE SPACE

SPACE	LEASE RATE	SIZE (SF)
Top Floor Suite	\$14.95 SF/yr	4,000 SF

## PROPERTY FEATURES

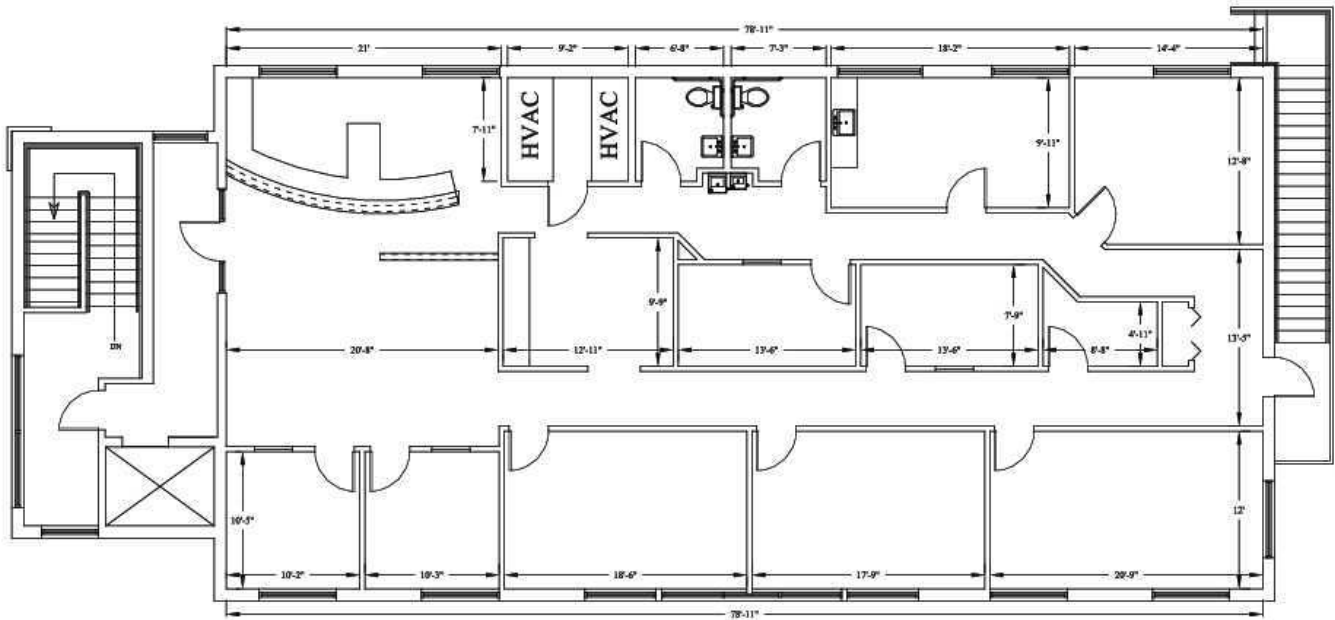
- **PENTHOUSE EXECUTIVE SUITE**
- Very Professional Office | +/- 4,000 SF
- \$14.95/SF. Tenant Pays Electricity & Janitorial Services and Share Of Gas
- 7 to 11 Offices Available
- Expansive Views Of Downtown
- 24/7 Tenant Access
- Cable/Fiber Internet Connections Available
- 2 Conference Rooms: 1 Seats +/- 10 plus 1 Smaller Conf Room, 1 Storage Room
- Cathedral Ceilings
- Reliable Building Power/Electricity

**Goodale & Barbieri Company**  
818 West Riverside #300  
Spokane, WA 99201  
www.g-b.com

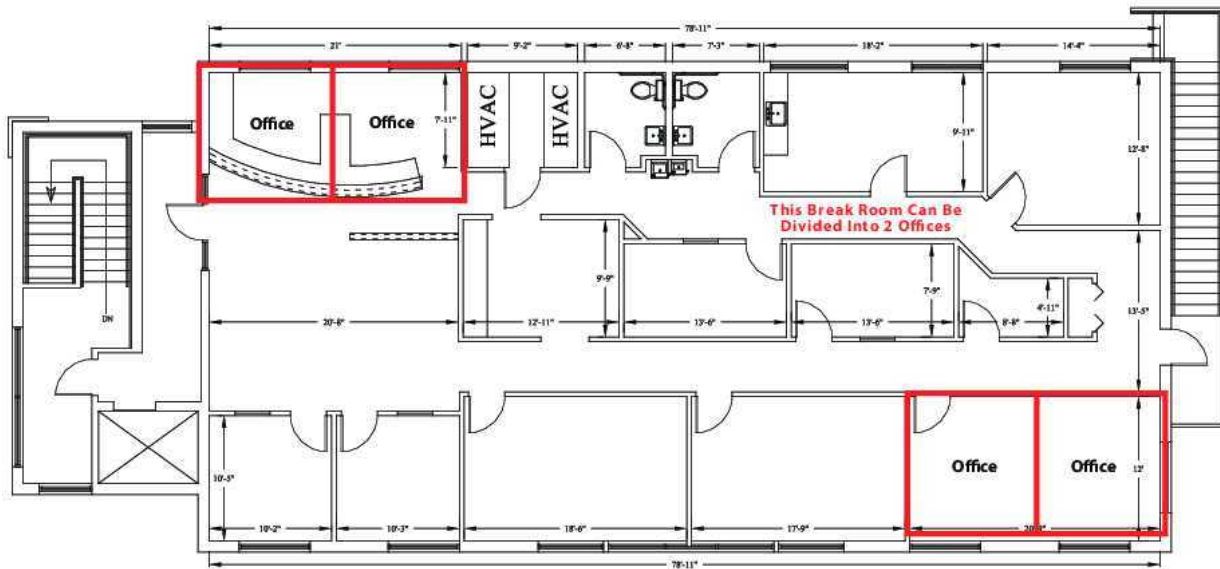
**Cory Barbieri** | Vice President  
509.344.4901 // cbarbieri@g-b.com

**Clayton McFarland** | Commercial & Leasing Manager  
509-344-4929 // cmcfarland@g-b.com

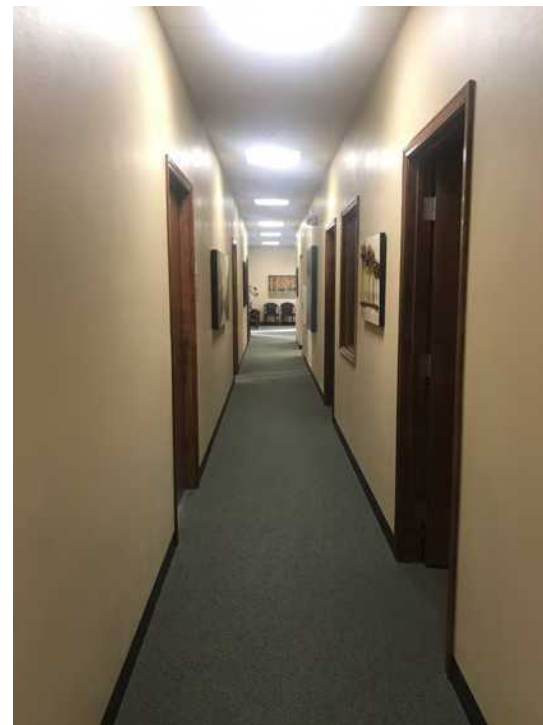
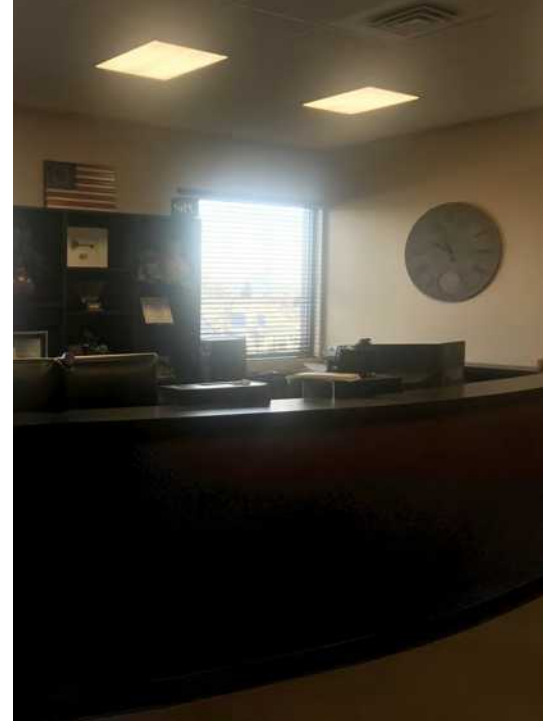
1



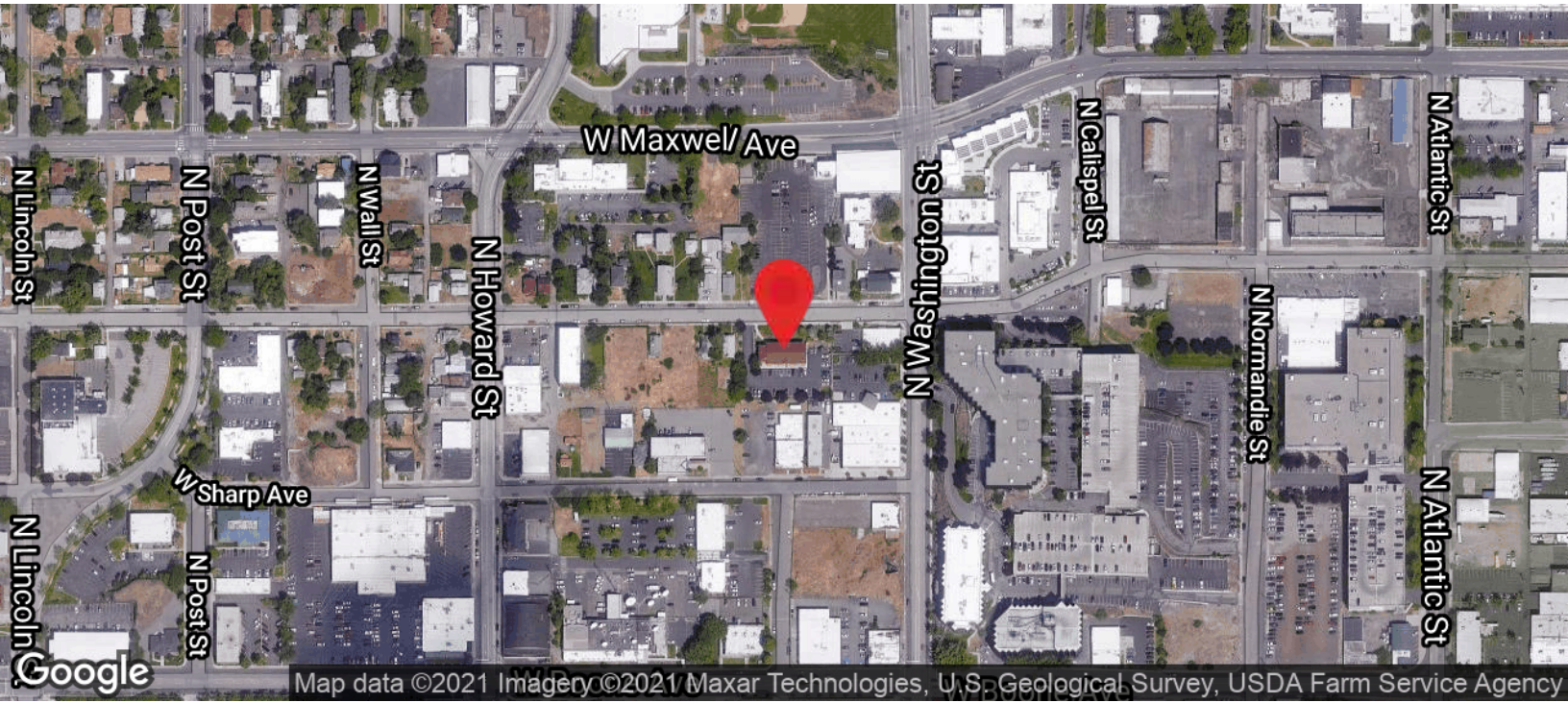
**Potential Layout**  
For Offices or Conference Room



Warranty: Goodale & Barbieri Company does not guarantee, warrant, either expressed or implied, any information supplied by the Seller. Buyer should rely on his own verification of this information as a part of their own due diligence. Copyright: We respect the intellectual property of others. If you believe that your work has been copied in a way that constitutes copyright infringement please contact us immediately.



Warranty: Goodale & Barbieri Company does not guarantee, warrant, either expressed or implied, any information supplied by the Seller. Buyer should rely on his own verification of this information as a part of their own due diligence. Copyright: We respect the intellectual property of others. If you believe that your work has been copied in a way that constitutes copyright infringement please contact us immediately.



Warranty: Goodale & Barbieri Company does not guarantee, warrant, either expressed or implied, any information supplied by the Seller. Buyer should rely on his own verification of this information as a part of their own due diligence. Copyright: We respect the intellectual property of others. If you believe that your work has been copied in a way that constitutes copyright infringement please contact us immediately.