



FOR LEASE

Southcenter Plaza

14900 Interurban Avenue South / Tukwila, WA



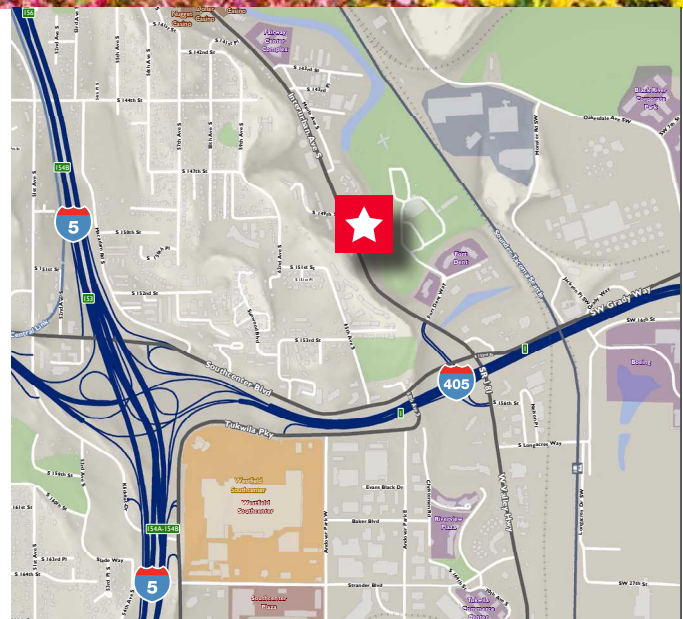
Office for Lease 741 - 7,149 sf

Property Highlights

- Accessible from both I-5 and I-405
- Two blocks from Westfield Southcenter Mall
- Ample free parking surrounds the building
- Adjacent to Fort Dent Park
- Views of the Green River
- Rental Rate: \$25.00 Fully Serviced

Available Space

- Suite 120: 7,149
- Suite 137: 1,466 sf
- Suite 165: 4,209 sf
- Suite 225: 741 sf



Kevin Smith

Associate Director

+1 206 521 0281

kevin.smith@cushwake.com

1420 Fifth Avenue, Suite 2600

Seattle, Washington 98101

Main +1 206 682 0666

Fax +1 206 521 0298

cushmanwakefield.com



**CUSHMAN &
WAKEFIELD**

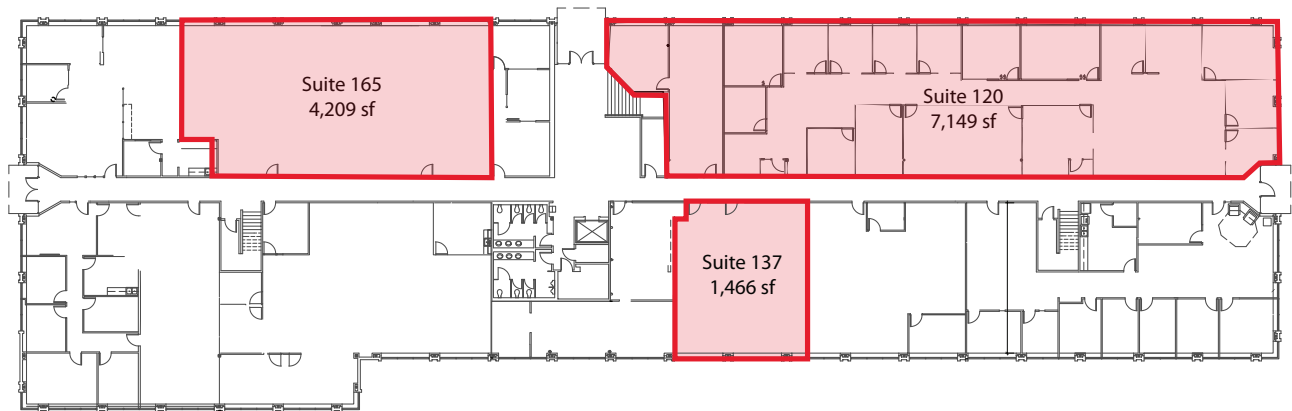
FOR LEASE

Southcenter Plaza

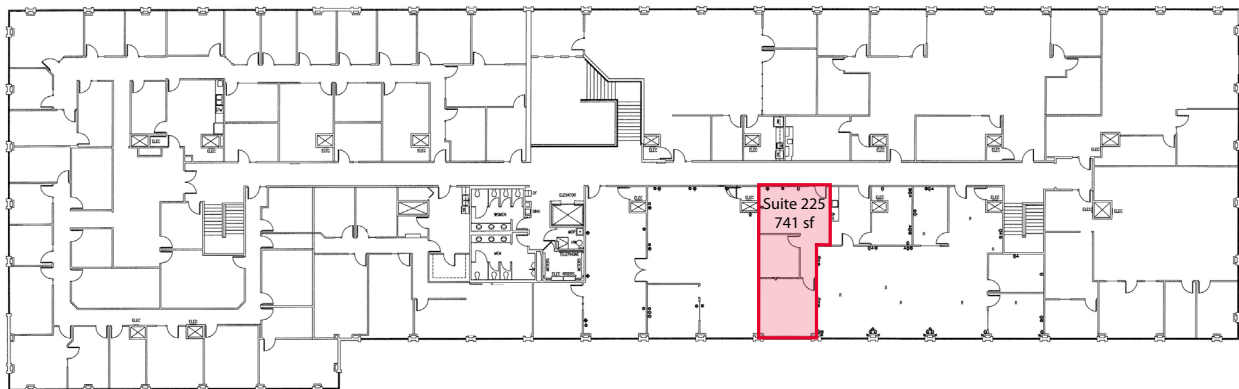
14900 Interurban Avenue South / Tukwila, WA

Floor Plans

First Floor



Second Floor



Kevin Smith
Associate Director
+1 206 521 0281
kevin.smith@cushwake.com

1420 Fifth Avenue, Suite 2600
Seattle, Washington 98101
Main +1 206 682 0666
Fax +1 206 521 0298
cushmanwakefield.com