

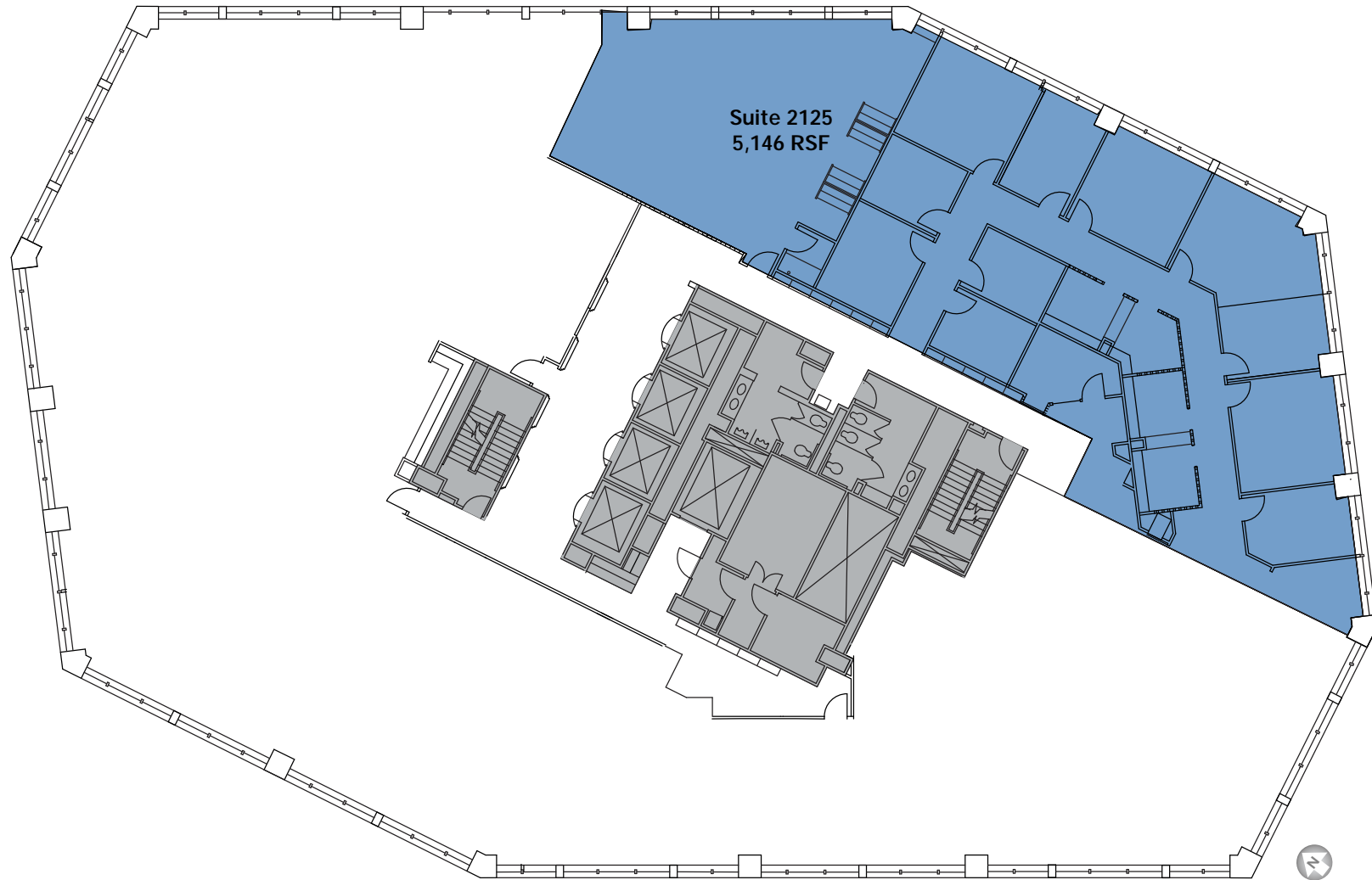
Westlake Tower

1601 Fifth Avenue | Seattle, WA



FLOOR 21

SUITE 2125 ±5,146 RSF



FOR MORE INFORMATION PLEASE CONTACT:

Jesse Ottele
+1 206 292 6096
jesse.ottele@cbre.com

Scotta Ashcraft
+1 206 292 6063
scotta.ashcraft@cbre.com

© 2014 CBRE, Inc. This information has been obtained from sources believed reliable. We have not verified it and make no guarantee, warranty or representation about it. Any projections, opinions, assumptions or estimates used are for example only and do not represent the current or future performance of the property. You and your advisors should conduct a careful, independent investigation of the property to determine to your satisfaction the suitability of the property for your needs. eps 04-24-14

CBRE