

WEST SEATTLE OFFICE W ADMIRAL DISTRICT

Orion Building W 2743 California Avenue SW W Seattle, WA 98116



- MODERN MIXED-USE OFFICE BUILDING LOCATED IN WEST SEATTLE'S ADMIRAL DISTRICT. LAST REMAINING OFFICE SUITE - 2,703 RSF
- DENTAL/MEDICAL ORIENTED 2010 CONSTRUCTION. SUPPLIED WITH NITROUS, AIR AND VACUUM CONNECTS. CLEAR SPAN DESIGNED CONSTRUCTION ELIMINATES COLUMNS AND PROMOTES FLEXIBLE SPACE PLANNING.
- 1ST GENERATION - 2ND FLOOR SUITE PROVIDES SWEEPING WEST FACING VIEWS TOWARD THE PUGET SOUND AND OLYMPIC MOUNTAINS. JOIN BUILDING TENANTS: PACIFIC ENDODONTICS, ELITE SPORT & SPINE, WEST SEATTLE RUNNER AND ORTHODONTIC FOR ALL AGES.
- BUILDING NEIGHBORS INCLUDE HIAWATHA PARK, PCC NATURAL MARKET, FRESHY'S CAFE. SITE NORTH OF THE JUNCTION RETAIL CORE.
- LEED CERTIFIED SILVER WITH STUART SILK ARCHITECTS DESIGN EMPHASIZING LONGEVITY AND SUSTAINABILITY. FEATURES GREEN ROOF, CONSTRUCTED 20% OF RECYCLED MATERIALS AND WAS ONE OF THE FIRST REDEVELOPMENTS IN THE NORTHWEST TO UTILIZE 'ONE STEP' WALL SYSTEMS NEW TECHNOLOGY PRODUCT WHICH COMBINES THE AESTHETIC APPEAL OF MASONRY WITH HIGH ENERGY EFFICIENT CONCRETE BLOCK DESIGN.

**WestCoast
Commercial**

R E A L T Y

For more information call:
(206) 283-5212

Retail Commercial Specialists



Blake Taylor

2101 Fourth Avenue, Suite 920 - Seattle, WA 98121

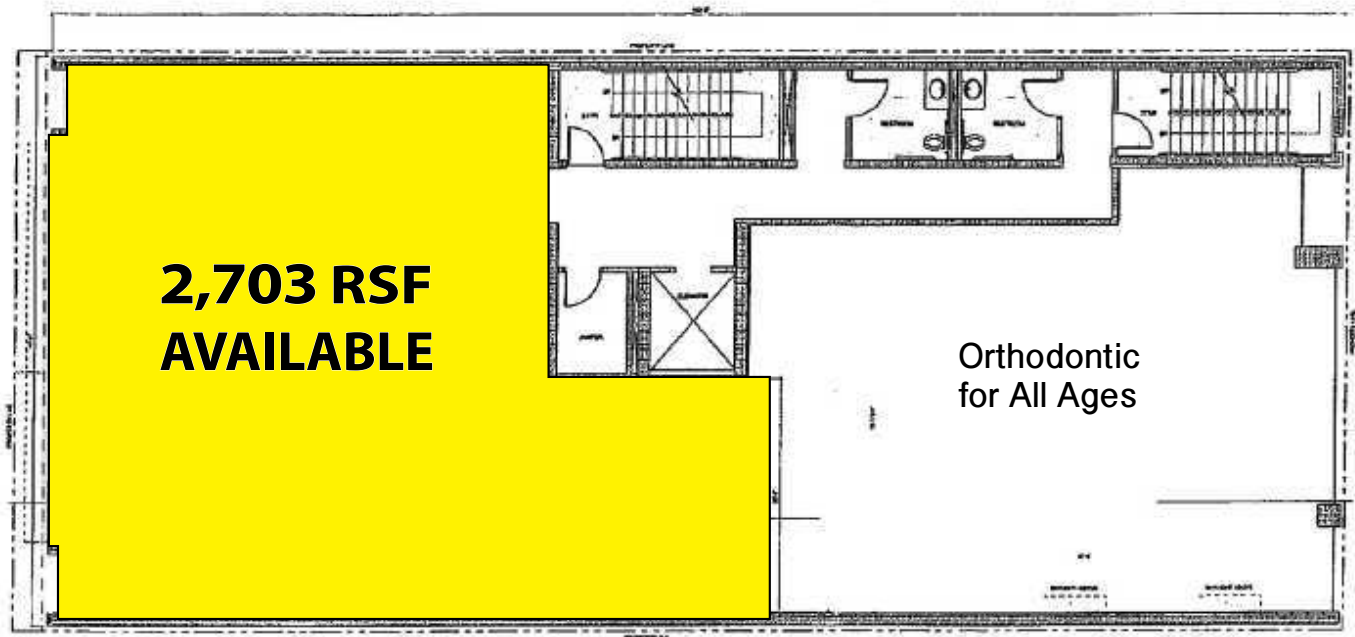
www.wccommercialrealty.com

DISCLAIMER: The above information has been secured from sources believed to be reliable, however, no representations are made to its accuracy. Prospective tenants or buyers should consult their professional advisors and conduct their own independent investigation. Site plan and configuration are subject to change. Properties are subject to change in price and/or availability without notice. West Coast Commercial Realty, LLC



WEST SEATTLE OFFICE W ADMIRAL DISTRICT

Orion Building W 2743 California Avenue SW W Seattle, WA 98116



**WestCoast
Commercial**
REALTY

For more information call:
(206) 283-5212

Retail Commercial Specialists



Blake Taylor

2101 Fourth Avenue, Suite 920 - Seattle, WA 98121

www.wccommercialrealty.com

DISCLAIMER: The above information has been secured from sources believed to be reliable, however, no representations are made to its accuracy. Prospective tenants or buyers should consult their professional advisors and conduct their own independent investigation. Site plan and configuration are subject to change. Properties are subject to change in price and/or availability without notice. West Coast Commercial Realty, LLC

Equal Housing Opportunity
POWER BROKER
2014 N/A Form Approved

CBA COMMERCIAL BROKERS
ASSOCIATION

ICSC
International Council of Shopping Centers