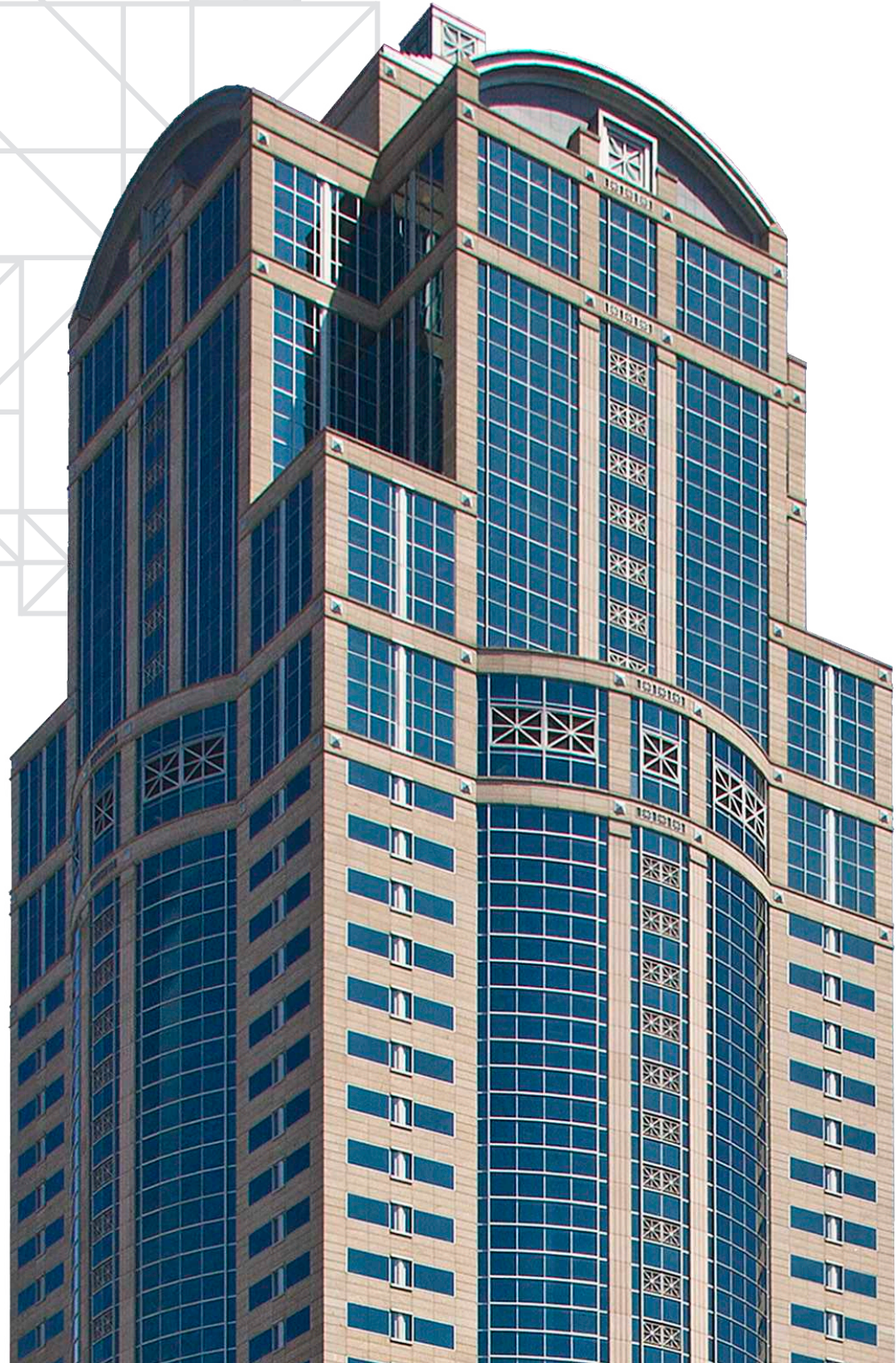
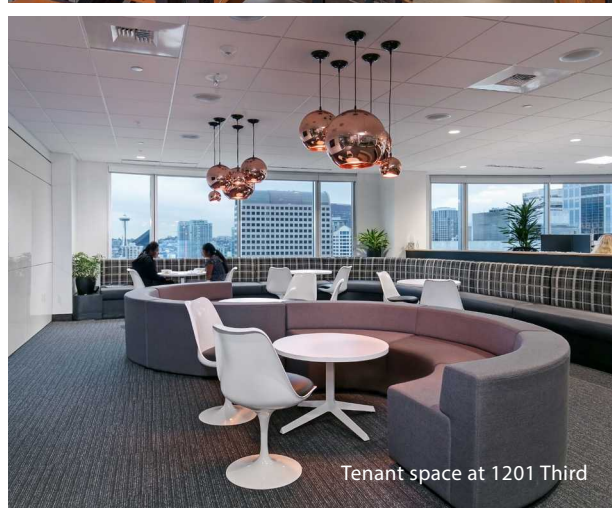


1201

THIRD





Why **1201 Third** should be your first choice

1201 Third's Class A+ office space is recognized as one of the best offered in Seattle — 1,128,575 SF and fifty-five stories

Newly renovated lobby and common areas

Located in the heart of the action, you're steps away from all the city has to offer

LEED Platinum certification

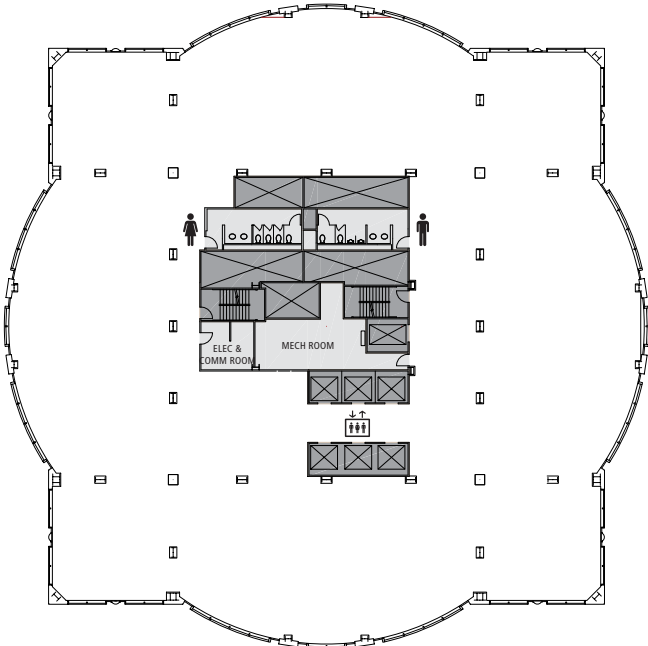
Transit tunnel in the building with access to light rail and buses

Outdoor plaza with three levels of restaurants, seating, shops and services

Secured on-site parking at a ratio of 1/1500 SF

Sweeping, unobstructed views of Elliott Bay, the Olympic Mountains and Downtown Seattle

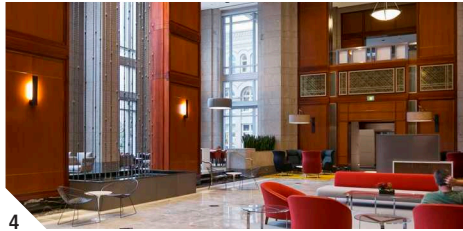
Representative floor plan
± 23,029 RSF



Unmatched on-site amenities



RECHARGE WITHOUT LEAVING THE BUILDING



- ① Outdoor courtyards
- ② Bike storage
- ③ Car detailing shop in parking garage
- ④ Great room with free wi-fi
- ⑤ The Brooklyn restaurant
- ⑥ Bus/lightrail tunnel below the building
- ⑦ Sundries and flower shop
- ⑧ Fitness facility
- ⑨ 127- person conference room
- ⑩ Melange Deli
- ⑪ Starbucks
- ⑫ Electric car charging

Prime location



Walk Score

99

Walker's Paradise
Leave the car behind and go anywhere on foot.



Transit Score

100

Rider's Paradise
World-class public transportation.



Bike Score

64

Bikeable
Excellent bike lanes, moderate to steep hills.



- T Transit tunnel entrance
- M Monorail
- F Ferry
- Ingress
- Egress
- Rapid Ride Bus (C-D-E lines)

1201

THIRD.COM



Stuart Williams +1 206 971 7008 stuart.williams@am.jll.com
Joe Gowan +1 206 607 1738 joe.gowan@am.jll.com
Lloyd Low +1 206 607 1796 lloyd.low@am.jll.com

601 Union Street, Suite 1100, Seattle, Washington 98101 +1 206 607 1700 office +1 206 607 1701 fax jll.com/seattle

©2015 Jones Lang LaSalle IP, Inc. All rights reserved. All information contained herein is from sources deemed reliable; however, no representation or warranty is made to the accuracy thereof.