

FOR LEASE

852 W Kathleen Ave - Suite A
Coeur d'Alene, ID 83814



LEASE PRICE:

\$1.60/SF/MO/Full Service

\$19.20/SF/YR/Full Service

SPACE AVAILABLE:

Suite A: \pm 1,300 SF

PROPERTY DETAILS

This nearly new office building is strategically positioned along the south side of Kathleen Ave in the middle of Coeur d'Alene offering users excellent client coverage for Coeur d'Alene and Hayden.


Amenities include:

- Professional office build with quality levels of finish
- Strong parking ratios
- Ease of access from Hwy 95
- Back-lit monument and façade signage

* Please do not disturb existing tenant
Available \pm January 1st, 2016

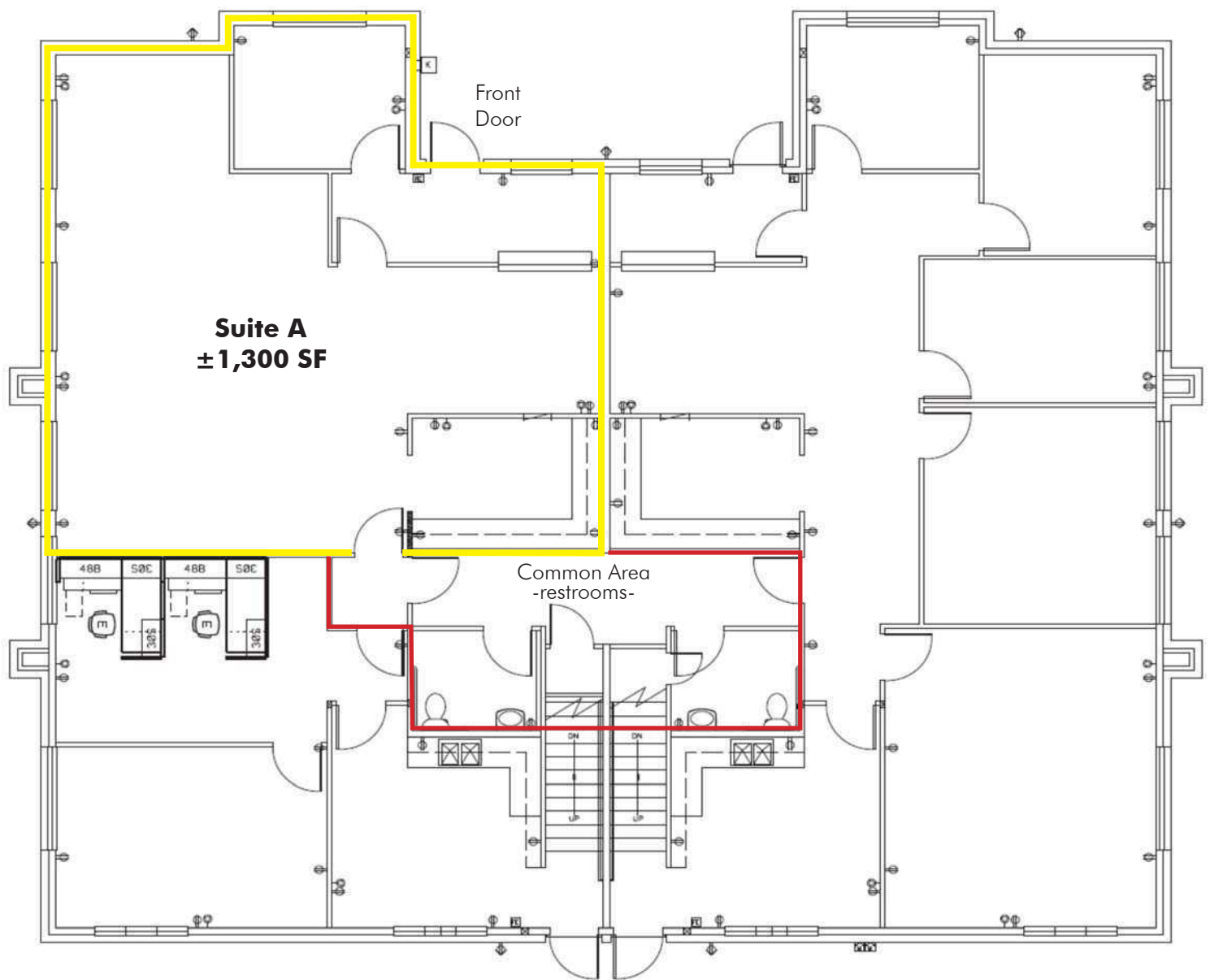
Pat Eberlin
208.215.1375 or pat.eberlin@khco.com

**KIEMLE &
HAGOOD
COMPANY**

 208.770.2590
khco.com

No warranty or representation, expressed or implied, is made by Kiemle & Hagood Company, its agents or its employees as to the accuracy of the information contained herein. All information furnished is from sources deemed reliable and submitted subject to errors, omissions, change of terms and conditions, prior sale, lease or financing, or withdrawal without notice. No one should rely solely on the above information, but instead should conduct their own investigation to independently satisfy themselves.





FLOOR PLAN & AERIAL

Pat Eberlin
208.215.1375 or pat.eberlin@khco.com

**KIEMLE &
HAGOOD
COMPANY**



208.770.2590
khco.com

No warranty or representation, expressed or implied, is made by Kiemle & Hagood Company, its agents or its employees as to the accuracy of the information contained herein. All information furnished is from sources deemed reliable and submitted subject to errors, omissions, change of terms and conditions, prior sale, lease or financing, or withdrawal without notice. No one should rely solely on the above information, but instead should conduct their own investigation to independently satisfy themselves.