

**FOR LEASE**

INDUSTRIAL SPACE

# RAD VENTURES BUILDING

15110 NE 95TH STREET, REDMOND, WA



**DYLAN WELCH**

+1 425 974 4038

dylan.welch@am.jll.com

**MARK FLIPPO**

+1 425 974 4007

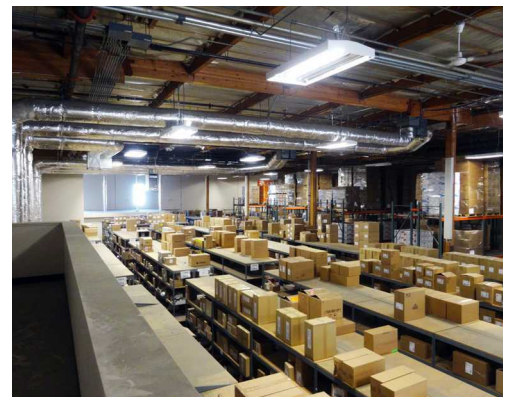
mark.flippo@am.jll.com

## AVAILABILITIES

SUITE	SIZE	COMMENTS
101	34,230 RSF	<ul style="list-style-type: none"> <li>+ 15,505 SF Office</li> <li>+ 18,725 SF Warehouse</li> <li>+ Available 5/1/2017</li> </ul>

## KEY FEATURES

- + Close proximity to a wide range of restaurants, retail, and service amenities
- + Direct access to I-405 and SR-520
- + Nearby amenities include Willows Run Golf Course and Downtown Redmond



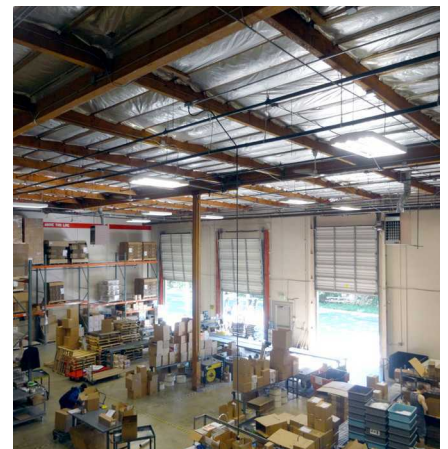
## BUILDING INFORMATION

YEAR BUILT	1978
TOTAL BUILDING SIZE	47,500 RSF
ZONING	LI, Redmond
PARKING	2.50/1,000 RSF

## SUITE SPECIFICATIONS

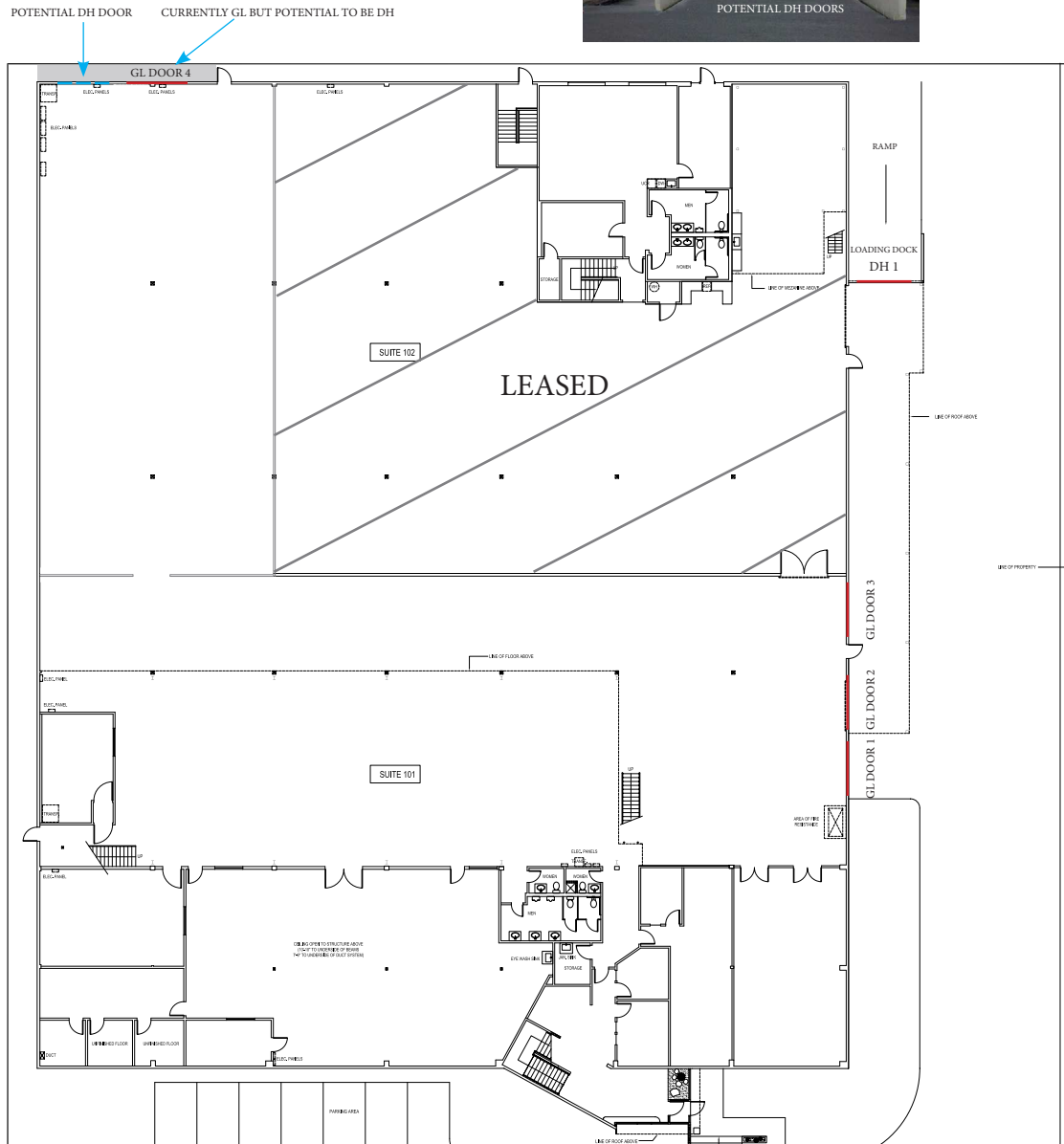
### SUITE 101

ELECTRICAL SERVICE	<ul style="list-style-type: none"> <li>+ 2,400 amps</li> <li>+ 480 volt 3-phase power</li> </ul>
LOADING	<ul style="list-style-type: none"> <li>+ 1 DH door and 4 GL doors or 3 DH doors and 3 GL doors (Landlord can convert)</li> </ul>
CLEARANCE	<ul style="list-style-type: none"> <li>+ 24' clear</li> </ul>
FIRE SPRINKLERS	<ul style="list-style-type: none"> <li>+ Yes</li> </ul>



# FLOOR PLAN

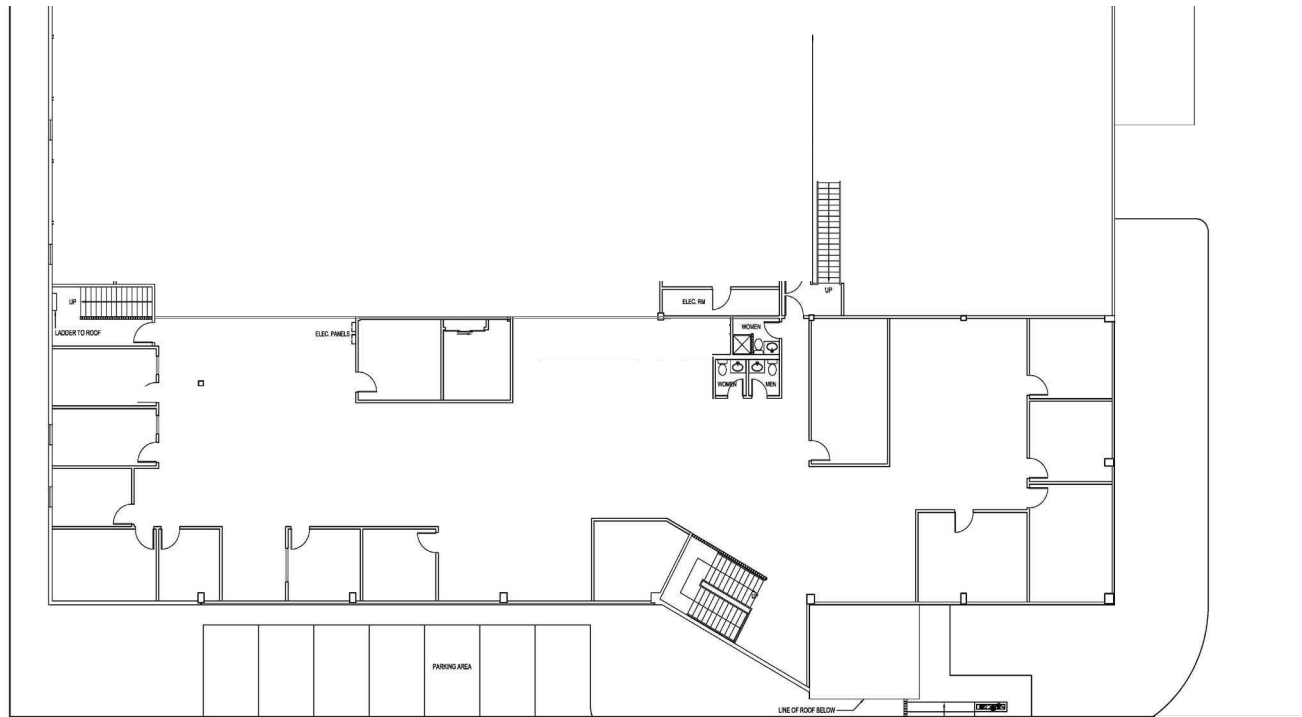
## 1ST FLOOR



\*Plans may not be accurate

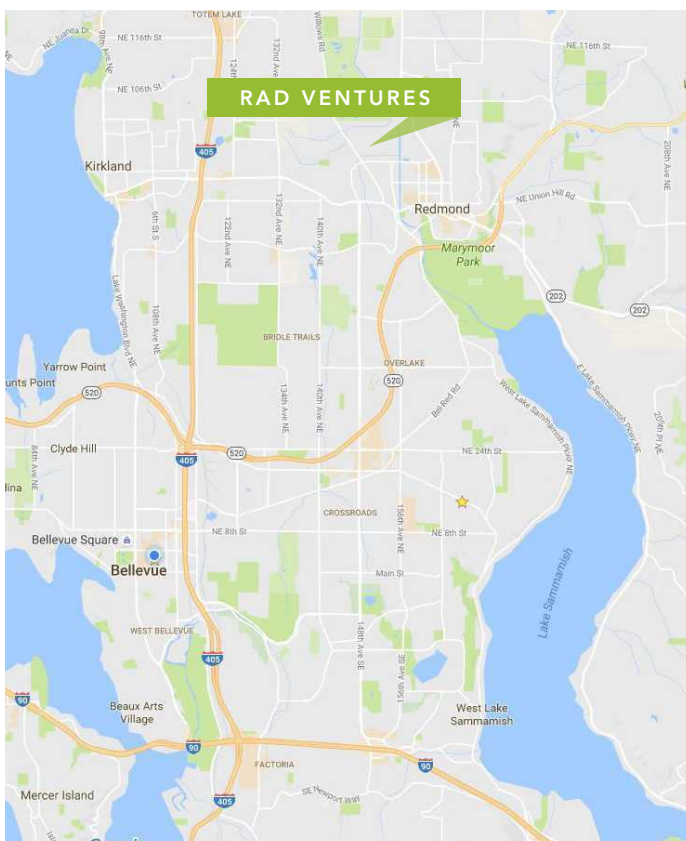
# FLOOR PLAN

## 2ND FLOOR OFFICE



\*Plans may not be accurate





EXCLUSIVELY  
OFFERED BY

**DYLAN WELCH**

+1 425 974 4038

dylan.welch@am.jll.com

## MARK FLIPPO

+1 425 974 4007

mark.flipppo@am.jll.com

