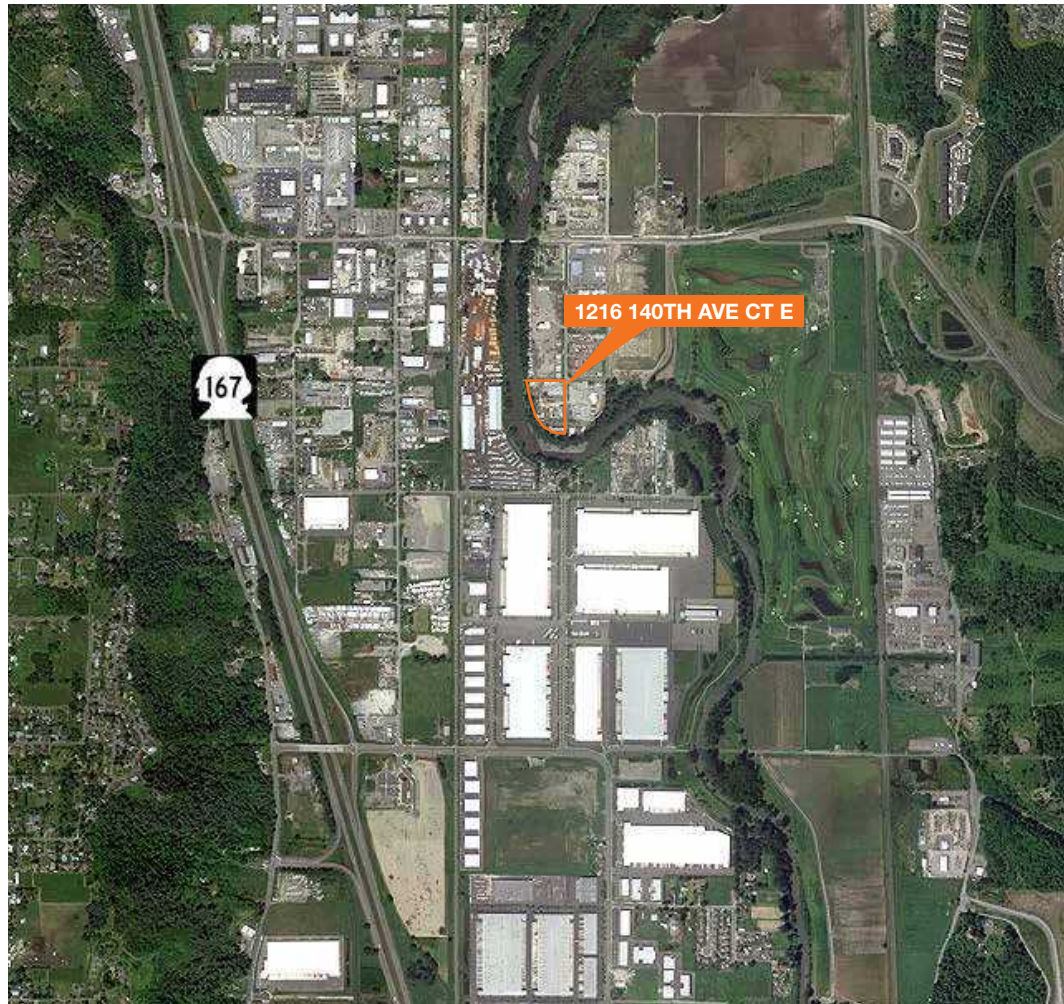


Former Parsons Facility

1216 140th Ave Court E
Sumner, WA

- ±5.4 acres paved and graveled
fenced yard area
- ±8,296 SF class A office building
- Yard use allowed
- Industrial zoning
- City of Sumner
- Excellent SR-167 access
- Available March 2017



Location



Contact

- Todd Clarke**
253.722.1422
tclarke@kiddermathews.com
- Matt Wood, SIOR**
206.248.7306
mwood@kiddermathews.com
- Ty Clarke**
253.722.1419
tyclarke@kiddermathews.com

Former Parsons Facility



Contact

Todd Clarke
253.722.1422
tclarke@kiddermathews.com

Matt Wood, SIOR
206.248.7306
mwood@kiddermathews.com

Ty Clarke
253.722.1419
tyclarke@kiddermathews.com