

## 11000 Tukwila International Blvd

11000 Tukwila  
International Blvd  
Tukwila, WA

97,402 SF total  
Divisible to 26,006 SF

Zoned MIC/H

Excellent freeway access

30' clear ESFR

28 dock high doors

4 drive-in ramps

130' loading count

Office built to suit

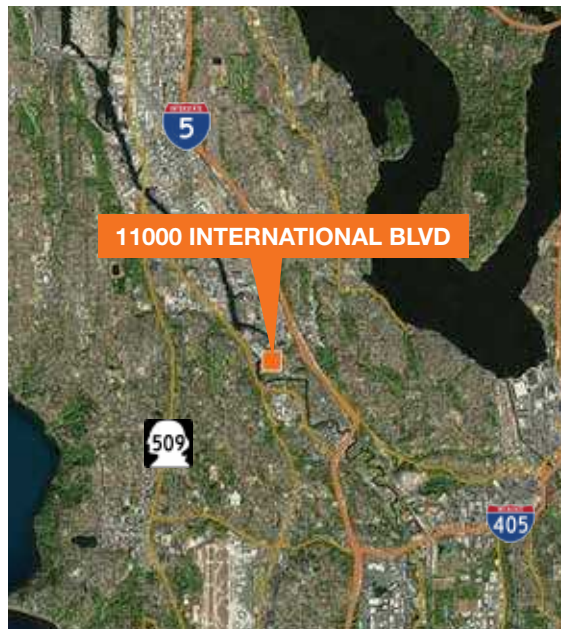
Under construction

Available August 2018



CONCEPTUAL PHOTO

### Location



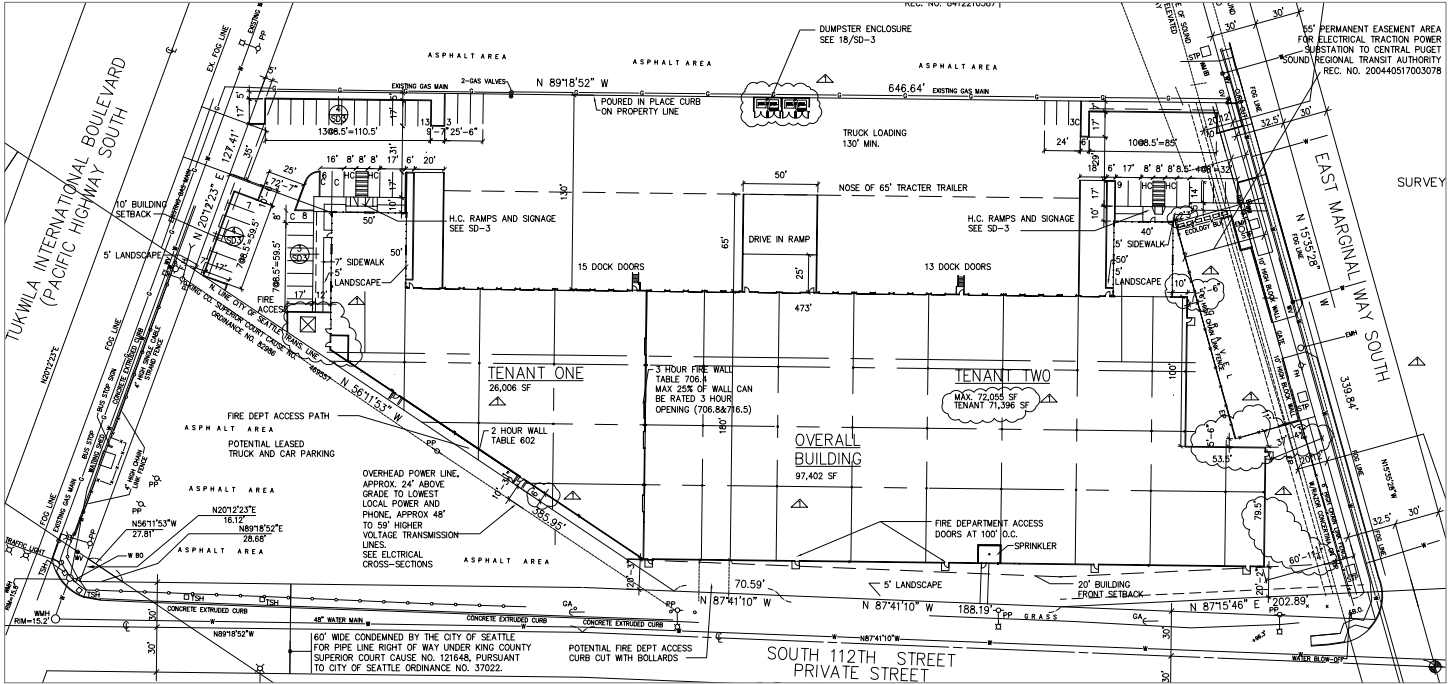
### Contact

**Jim Kidder, SIOR**

206.248.7328

[jkidder@kiddermathews.com](mailto:jkidder@kiddermathews.com)

## 11000 International Blvd



### Contact

**Jim Kidder, SIOR**  
 206.248.7328  
 jkidder@kiddermathews.com