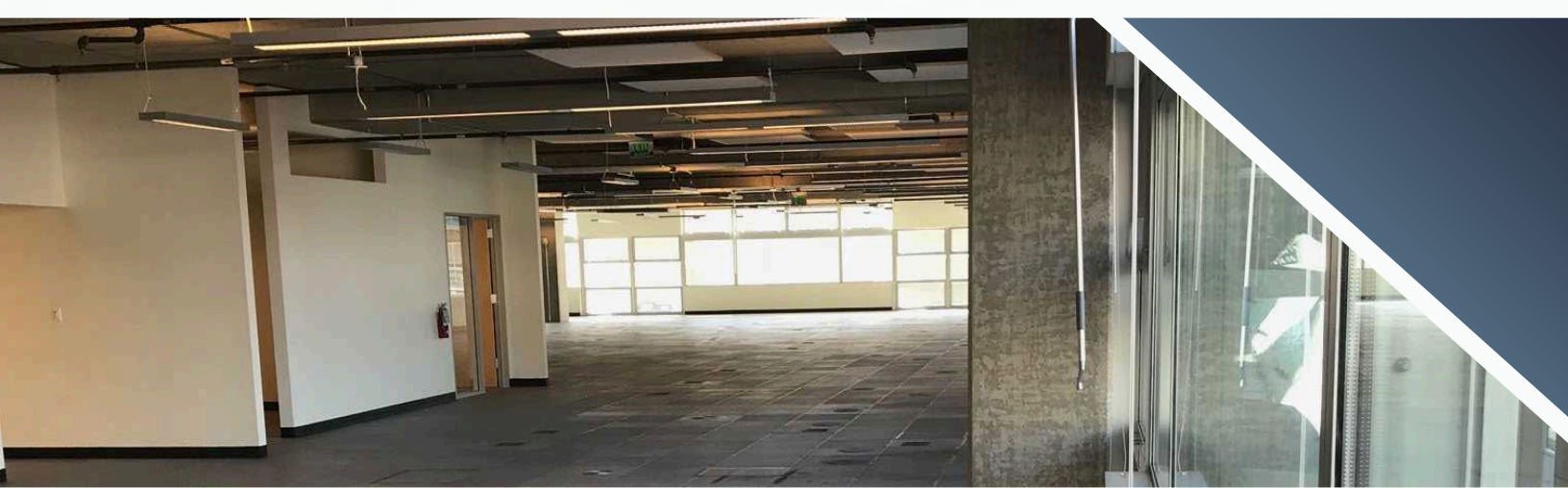


FOR SUBLEASE

ALLEY24

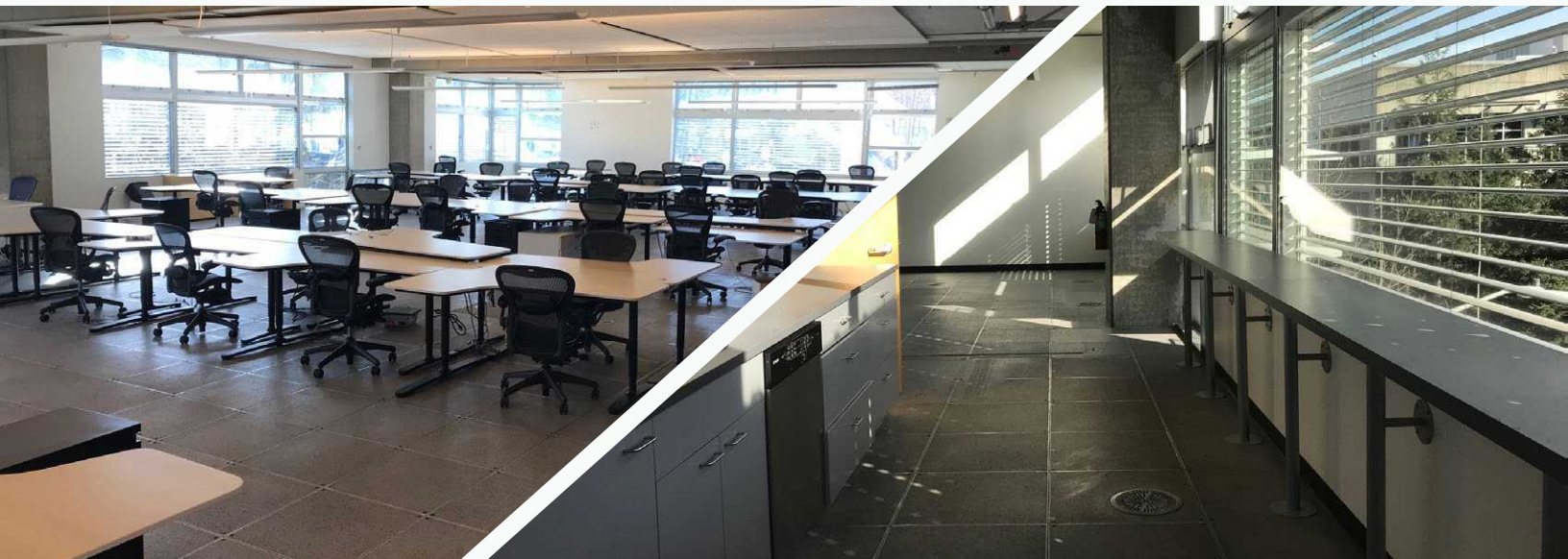
221 YALE AVENUE N., SEATTLE, WA

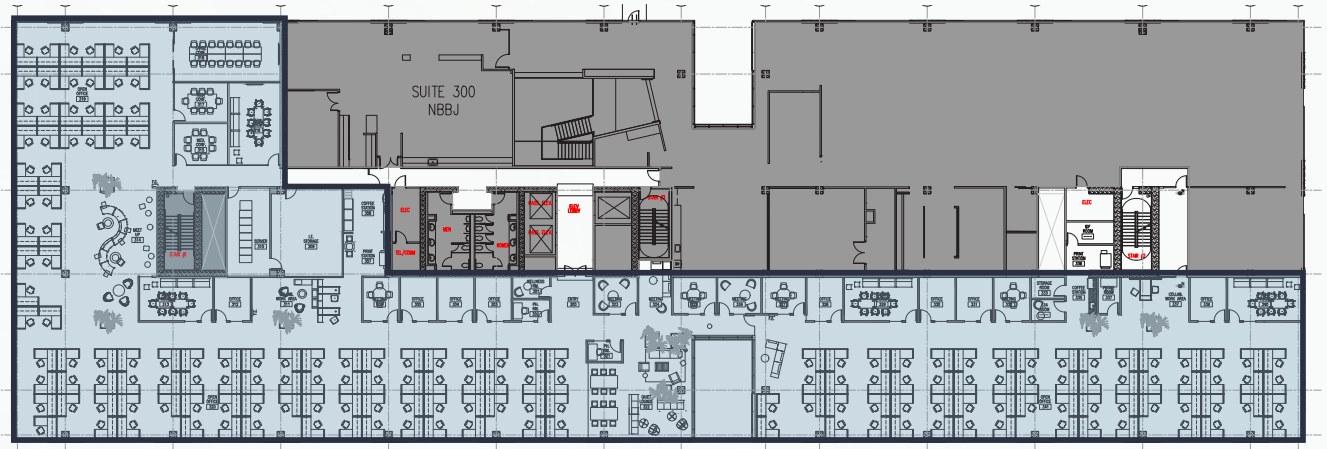
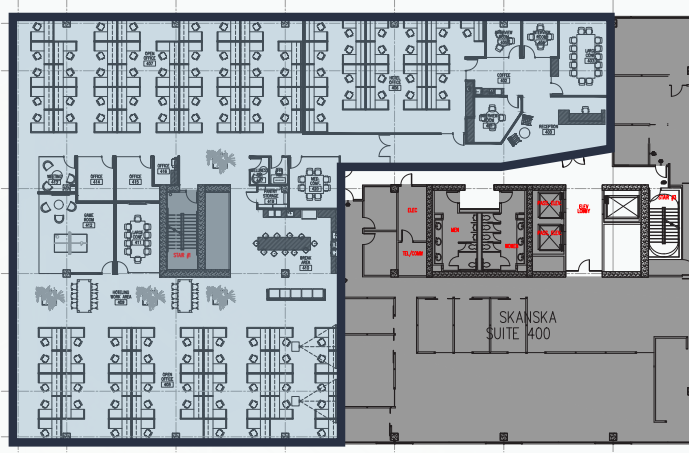
CBRE



PROPERTY HIGHLIGHTS

- Immediately available
- Term through January 31, 2023
- Tenant improvement allowance available
- 39 parking passes at market
- Please call for rates





**Furniture plan shown is conceptual.*

AVAILABILITY

- 38,630 RSF divisible to:
- Suite 320 13,921 SF
- Suite 350 10,280 SF
- Combined 320/350 24,201 SF
- Suite 450 14,429 SF
- Suite 320 is fully furnished



ALLEY24



CONTACT INFORMATION

STEVE SCHWARTZ

Senior Vice President

+1 206 292 6140

Steve.schwartz@cbre.com

SEAN SUSSEX

Senior Associate

+1 206 292 6041

Sean.sussex@cbre.com

CBRE, INC.

1420 5th Ave

17th Floor

Seattle, WA 98191

CBRE

© 2018 CBRE, Inc. All rights reserved. This information has been obtained from sources believed reliable, but has not been verified for accuracy or completeness. You should conduct a careful, independent investigation of the property and verify all information. Any reliance on this information is solely at your own risk. CBRE and the CBRE logo are service marks of CBRE, Inc. and/or its affiliated or related companies in the United States and other countries. All other marks displayed on this document are the property of their respective owners. Photos herein are the property of their respective owners and use of these images without the express written consent of the owner is prohibited. PMStudio_February2018