



FOR LEASE

12511 Meridian East

12511 MERIDIAN E, PUYALLUP, WA



Great office space - lease all or part

SUITE 2A Leased

GREAT exposure

SUITE 2B Leased

\$18.00 per square foot plus utilities

SUITE 2C 163 SF

TOTAL SF AVAILABLE 163 SF

MERIDIAN frontage

JEROME O'LEARY
253.779.9292
jerome.oleary@kidder.com

KIDDER.COM

This information supplied herein is from sources we deem reliable. It is provided without any representation, warranty, or guarantee, expressed or implied as to its accuracy. Prospective Buyer or Tenant should conduct an independent investigation and verification of all matters deemed to be material, including, but not limited to, statements of income and expenses. Consult your attorney, accountant, or other professional advisor.



FOR LEASE

12511 Meridian East

12511 MERIDIAN E, PUYALLUP, WA



KIDDER.COM

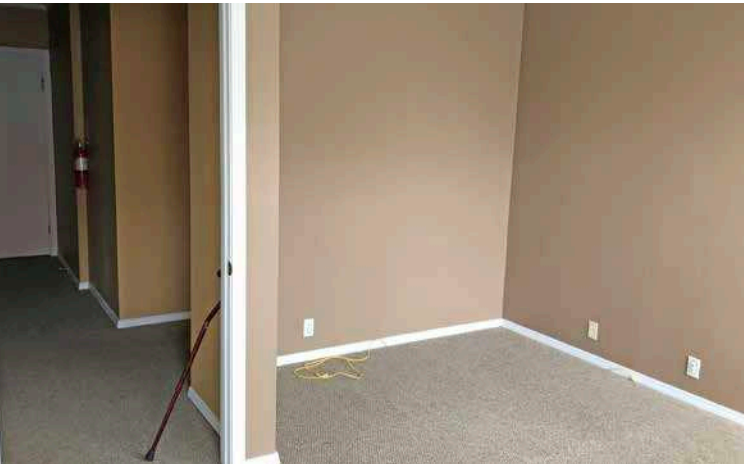
This information supplied herein is from sources we deem reliable. It is provided without any representation, warranty, or guarantee, expressed or implied as to its accuracy. Prospective Buyer or Tenant should conduct an independent investigation and verification of all matters deemed to be material, including, but not limited to, statements of income and expenses. Consult your attorney, accountant, or other professional advisor.

km Kidder Mathews

FOR LEASE

12511 Meridian East

12511 MERIDIAN E, PUYALLUP, WA



DEMOGRAPHICS

2019	1 Mile	3 Miles	5 Miles
Population	13,346	85,973	180,281
Households	5,403	31,950	66,455
Median HH Income	\$68,975	\$83,347	\$83,272

JEROME O'LEARY

253.779.9292

jerome.oleary@kidder.com

KIDDER.COM

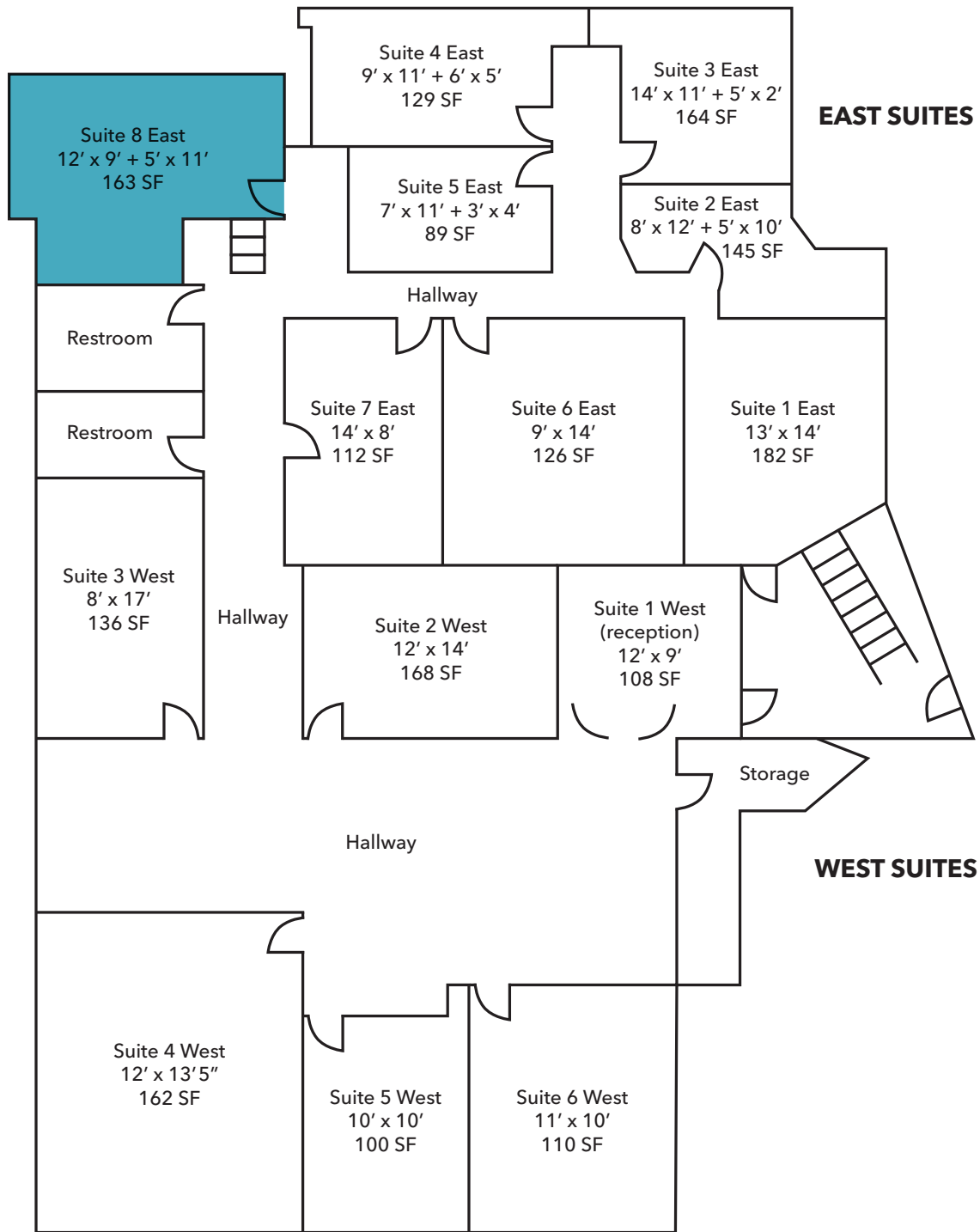
This information supplied herein is from sources we deem reliable. It is provided without any representation, warranty, or guarantee, expressed or implied as to its accuracy. Prospective Buyer or Tenant should conduct an independent investigation and verification of all matters deemed to be material, including, but not limited to, statements of income and expenses. Consult your attorney, accountant, or other professional advisor.



FOR LEASE

12511 Meridian East

12511 MERIDIAN E, PUYALLUP, WA



JEROME O'LEARY

253.779.9292

jerome.oleary@kidder.com

KIDDER.COM

This information supplied herein is from sources we deem reliable. It is provided without any representation, warranty, or guarantee, expressed or implied as to its accuracy. Prospective Buyer or Tenant should conduct an independent investigation and verification of all matters deemed to be material, including, but not limited to, statements of income and expenses. Consult your attorney, accountant, or other professional advisor.

