



SEATTLE
TOWER

RESTAURANT SPACE FOR LEASE

2,533 RSF of second generation restaurant space in Seattle's historic Class A high-rise office building nestled in the center of downtown

1218 3RD AVENUE
SEATTLE, WA



 **Kidder
Mathews**

HIGHLIGHTS

2ND GENERATION RESTAURANT

Rare, second generation restaurant space in the downtown market with type 1 hood system, walk-ins, and infrastructure in place

HISTORIC ART DECO BUILDING

Located at the base of a beautiful Class A office tower in Seattle's CBD across the street from Benaroya Hall

WALKER'S PARADISE

Close to dozens of quality restaurants, including The Capital Grille, Shuckers, Purple Cafe & Wine Bar, and Pegasus Coffee currently in the building



DEMOGRAPHICS

	1/4 MILE	1/2 MILE	1 MILE
Population	866	3,088	22,562
Households	443	1,804	11,138
Average HH Income	\$215,975	\$130,270	\$96,686



71,065

DAYTIME POPULATION
WITHIN 1 MILE



13,190

TRAFFIC COUNT



61,056

DAYTIME WORKERS
WITHIN 1 MILE

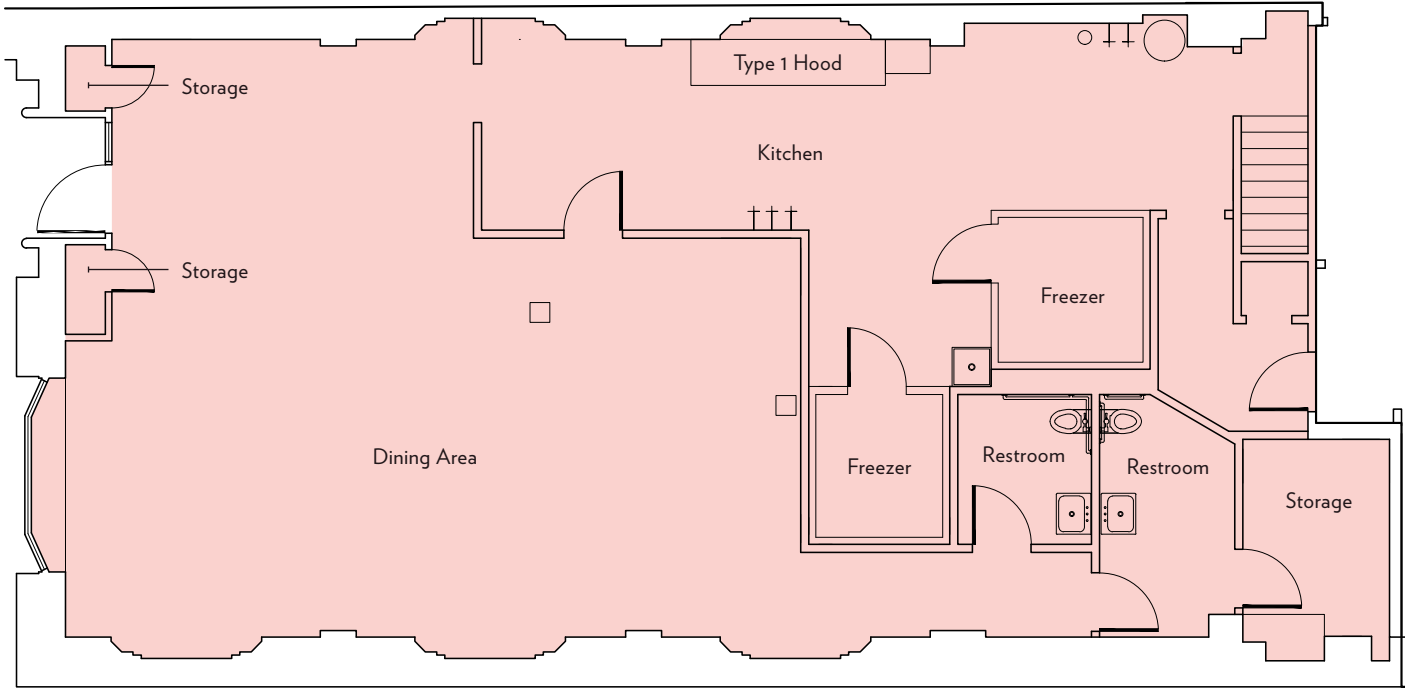


10,009

TOTAL RESIDENTS
WITHIN 1 MILE



2,533 RSF RESTAURANT SPACE



IN THE HEART OF DOWNTOWN SEATTLE



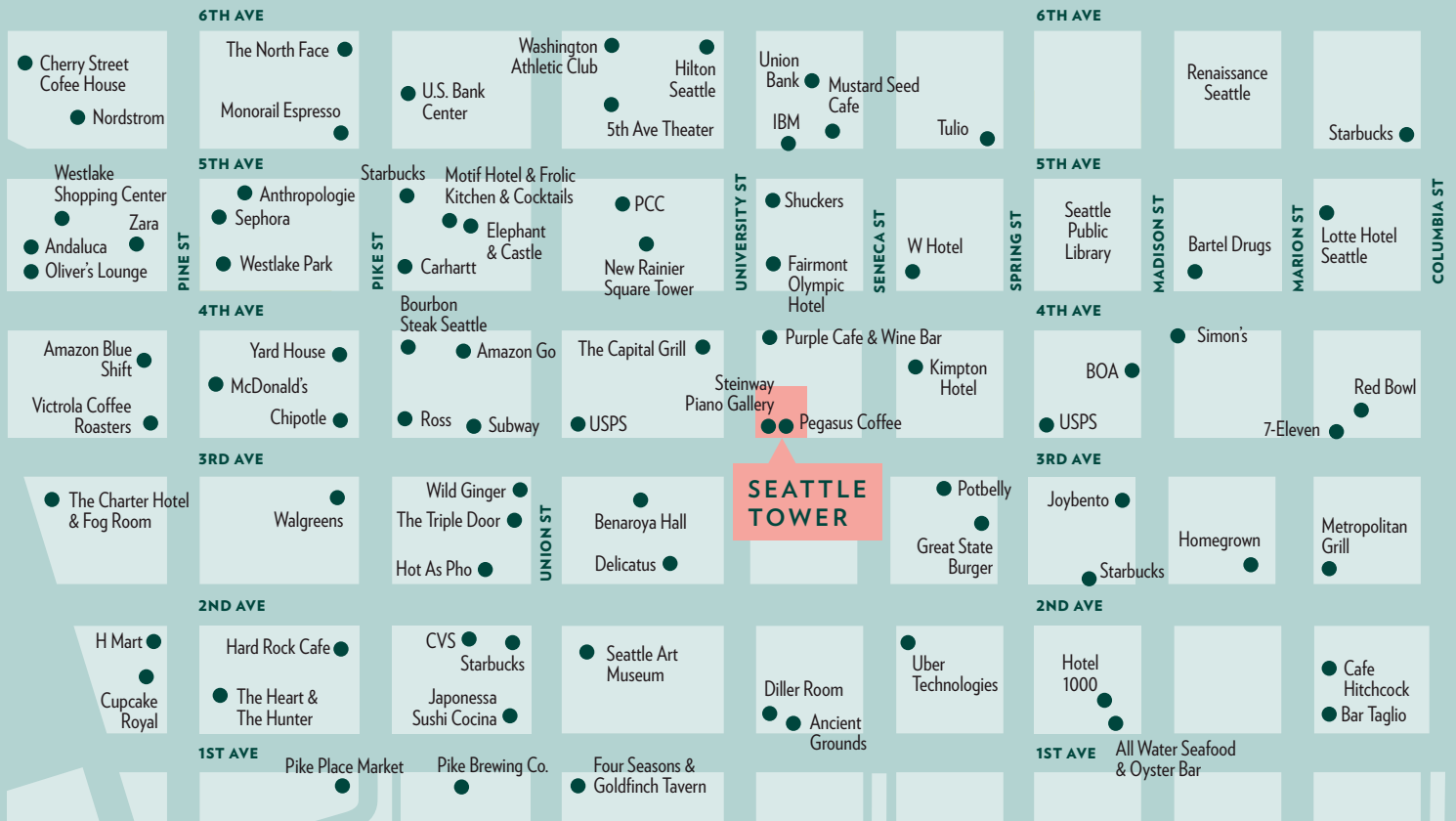
13'
FRONTAGE ON 3RD AVE



100
TRANSIT SCORE



99
WALK SCORE



SEATTLE TOWER

OWNED BY

基滙資本



GAW CAPITAL

FOR LEASING INFORMATION CONTACT

JASON MILLER
Vice President
206.296.9649 | jason.miller@kidder.com



Kidder Mathews

KIDDER.COM

This information supplied herein is from sources we deem reliable. It is provided without any representation, warranty or guarantee, expressed or implied as to its accuracy. Prospective Buyer or Tenant should conduct an independent investigation and verification of all matters deemed to be material, including, but not limited to, statements of income and expenses. Consult your attorney, accountant, or other professional advisor.