

±110,440 RSF OFFICE FOR LEASE

# 1423 PACIFIC

1411-1423 PACIFIC AVENUE, TACOMA, WA 98402

**LEE & ASSOCIATES**  
COMMERCIAL REAL ESTATE SERVICES



## 1423 PACIFIC HISTORIC CLASS-A ICON

At ±110,440 RSF, 1423 PACIFIC is a historic icon of Tacoma. Designed by the nationally renowned architect, Frederick Heath, the 10-story tower was the tallest building in Tacoma upon its completion in 1908. In 1999, new ownership saw to the full restoration, including a complete seismic retrofit, along with many safety and mechanical upgrades. Meticulous attention to detail can be seen throughout this iconic building.

Now available for the first time in over 20 years, this is your opportunity to occupy a true Historic Class-A building.

JOHN BAUDER  
jbauder@lee-associates.com  
D 253.238.0043

HARRISON LAIRD  
hlaird@lee-associates.com  
D 253.238.0044

All information furnished regarding property for sale, rental or financing is from sources deemed reliable, but no warranty or representation is made to the accuracy thereof and same is submitted to errors, omissions, change of price, rental or other conditions prior to sale, lease or financing or withdrawal without notice. No liability of any kind is to be imposed on the broker herein.

±110,440 RSF OFFICE FOR LEASE

# 1423 PACIFIC

1411-1423 PACIFIC AVENUE, TACOMA, WA 98402

## BUILDING AMENITIES

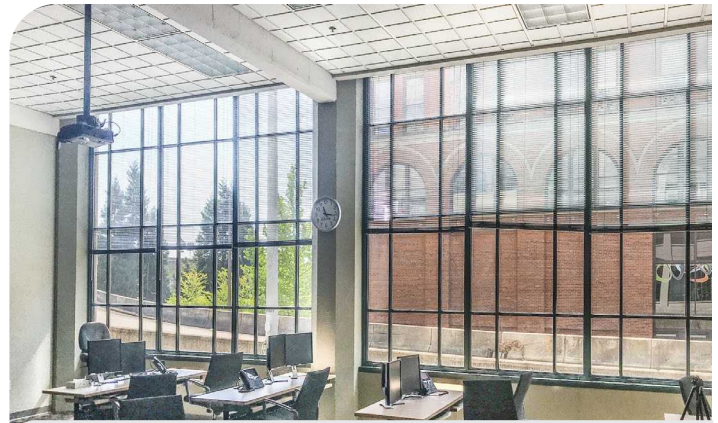
- On-site covered and secured parking available
- On-site gym with locker rooms and showers
- On-site cafe
- Fiber Internet
- High-end buildout
- Expansive windows surrounding each floor, providing abundant natural lighting and unimpeded water, mountain and city views
- Modernized elevators and HVAC system



FITNESS CENTER ENTRY



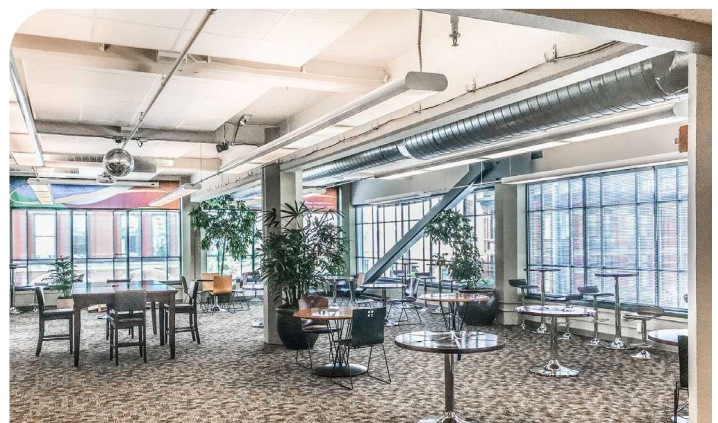
10<sup>TH</sup> FLOOR BOARD ROOM



3<sup>RD</sup> FLOOR TRAINING ROOM



LOBBY



3<sup>RD</sup> FLOOR LOUNGE

JOHN BAUDER  
jbauder@lee-associates.com  
D 253.238.0043

HARRISON LAIRD  
hlaird@lee-associates.com  
D 253.238.0044

All information furnished regarding property for sale, rental or financing is from sources deemed reliable, but no warranty or representation is made to the accuracy thereof and same is submitted to errors, omissions, change of price, rental or other conditions prior to sale, lease or financing or withdrawal without notice. No liability of any kind is to be imposed on the broker herein.

±110,440 RSF OFFICE FOR LEASE

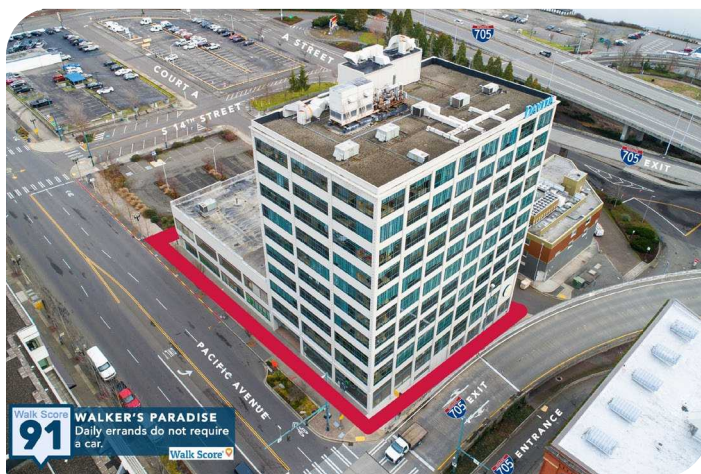
# 1423 PACIFIC

1411-1423 PACIFIC AVENUE, TACOMA, WA 98402

## LOCATION HIGHLIGHTS

1423 PACIFIC is located in the heart of Downtown Tacoma.

- **Drive:** Directly adjacent to the I-705 entrance and 2 exits, and within 1/4 mile of bi-directional access to and from I-5.
- **Ride:** 1-block from the Convention Center Light Rail Station; access from Sounder Light Rail via Tacoma Link Light Rail
- **Walk:** WalkScore of 91. Nearby trails include the Prairie Line Trail into Tacoma's Brewery District, and the Thea Foss Esplanade along the Waterway.



JOHN BAUDER  
jbauder@lee-associates.com  
D 253.238.0043

HARRISON LAIRD  
hlaird@lee-associates.com  
D 253.238.0044

All information furnished regarding property for sale, rental or financing is from sources deemed reliable, but no warranty or representation is made to the accuracy thereof and same is submitted to errors, omissions, change of price, rental or other conditions prior to sale, lease or financing or withdrawal without notice. No liability of any kind is to be imposed on the broker herein.

±110,440 RSF OFFICE FOR LEASE

# 1423 PACIFIC

1411-1423 PACIFIC AVENUE, TACOMA, WA 98402



BUILDING FROM 14<sup>TH</sup> & PACIFIC AVENUE

## AVAILABLE SPACE

Each floor at 1423 PACIFIC has its own kitchenette and restrooms, making the building ideal for a variety of tenant sizes, from a single-floor to the entire building.

- +/-110,400 RSF available, divisible to 3,625 SF
- Floor 1: 18,567 SF
- Floor 2: 21,220 SF
- Floors 3-10: 8,832 SF ach

## RATE

- \$26 - \$30 PSF Full-Service



MT. RAINIER FROM THE 10<sup>TH</sup> FLOOR

JOHN BAUDER  
jbauder@lee-associates.com  
D 253.238.0043

HARRISON LAIRD  
hlaird@lee-associates.com  
D 253.238.0044

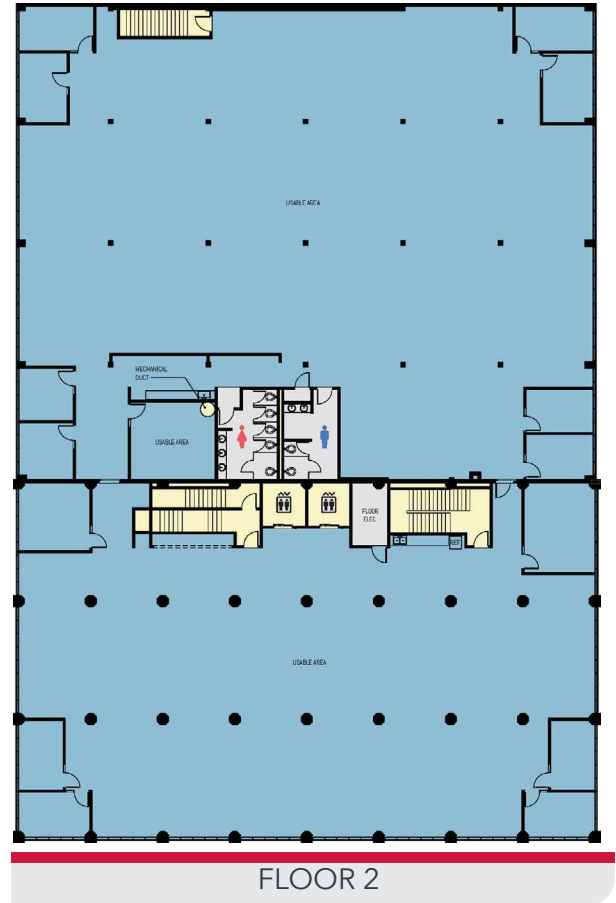
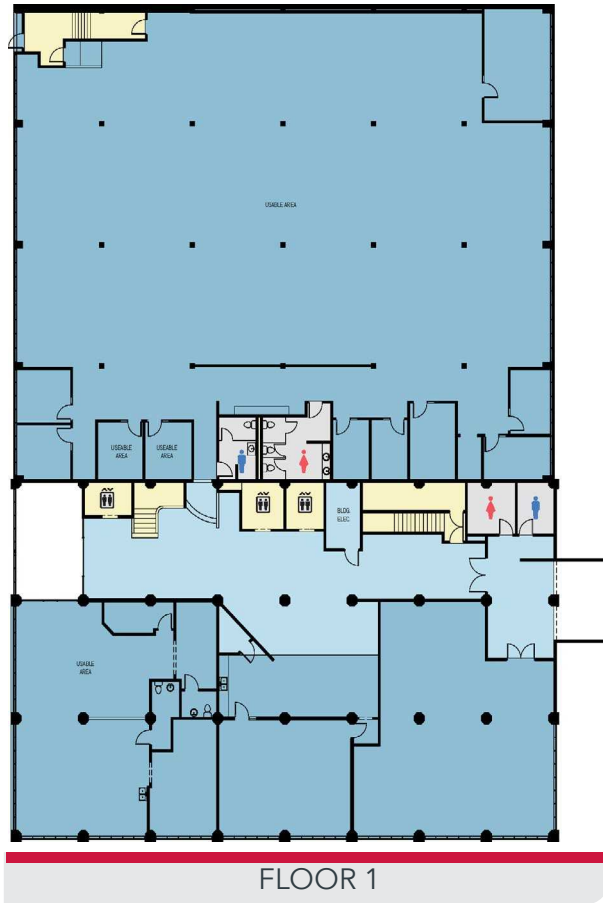
All information furnished regarding property for sale, rental or financing is from sources deemed reliable, but no warranty or representation is made to the accuracy thereof and same is submitted to errors, omissions, change of price, rental or other conditions prior to sale, lease or financing or withdrawal without notice. No liability of any kind is to be imposed on the broker herein.

±110,440 RSF OFFICE FOR LEASE

# 1423 PACIFIC

1411-1423 PACIFIC AVENUE, TACOMA, WA 98402

## FLOOR PLANS



JOHN BAUDER  
jbauder@lee-associates.com  
D 253.238.0043

HARRISON LAIRD  
hlaird@lee-associates.com  
D 253.238.0044

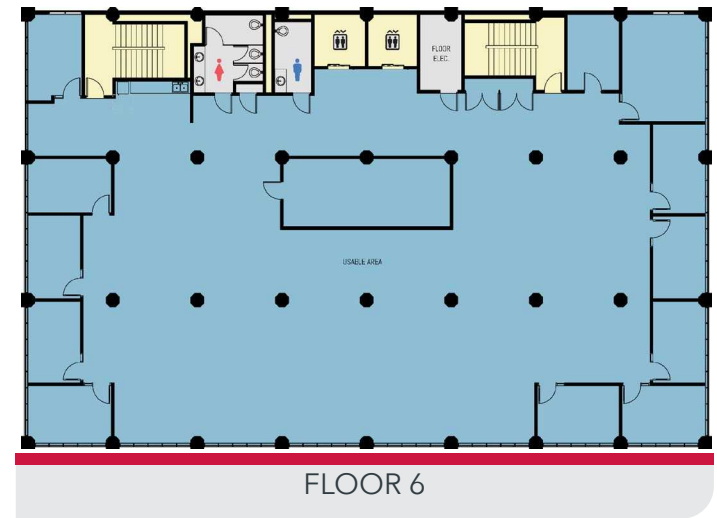
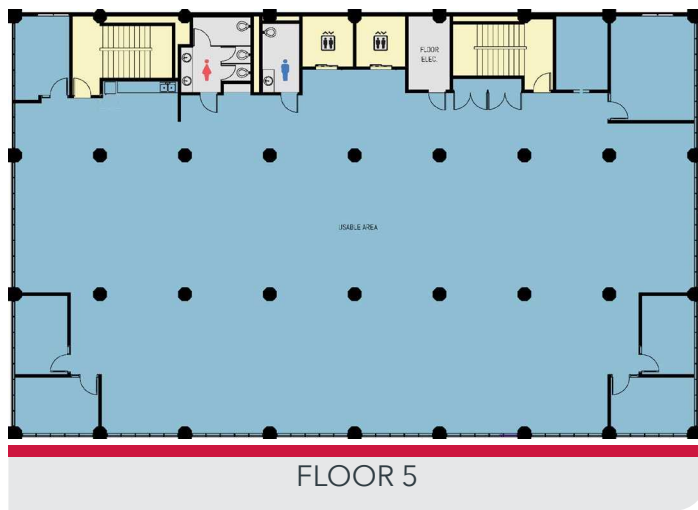
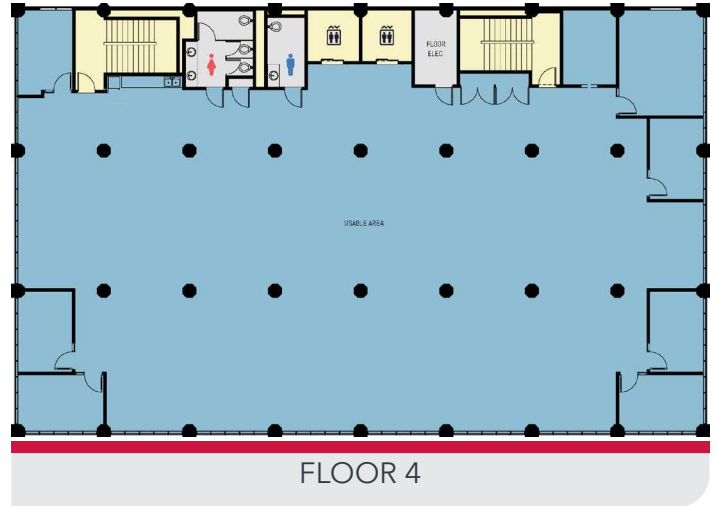
All information furnished regarding property for sale, rental or financing is from sources deemed reliable, but no warranty or representation is made to the accuracy thereof and same is submitted to errors, omissions, change of price, rental or other conditions prior to sale, lease or financing or withdrawal without notice. No liability of any kind is to be imposed on the broker herein.

±110,440 RSF OFFICE FOR LEASE

# 1423 PACIFIC

1411-1423 PACIFIC AVENUE, TACOMA, WA 98402

## FLOOR PLANS



JOHN BAUDER  
jbauder@lee-associates.com  
D 253.238.0043

HARRISON LAIRD  
hlaird@lee-associates.com  
D 253.238.0044

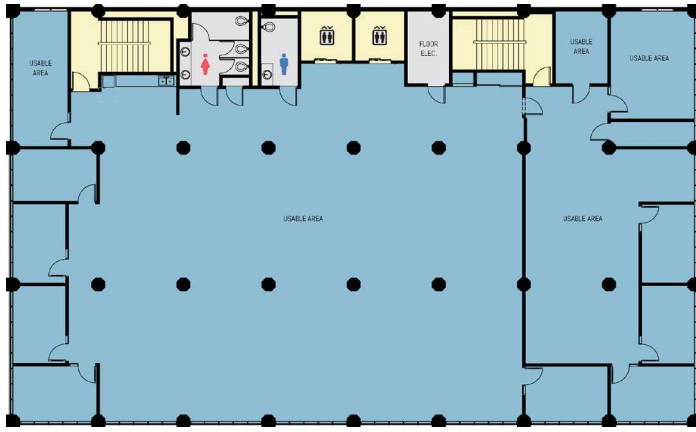
All information furnished regarding property for sale, rental or financing is from sources deemed reliable, but no warranty or representation is made to the accuracy thereof and same is submitted to errors, omissions, change of price, rental or other conditions prior to sale, lease or financing or withdrawal without notice. No liability of any kind is to be imposed on the broker herein.

±110,440 RSF OFFICE FOR LEASE

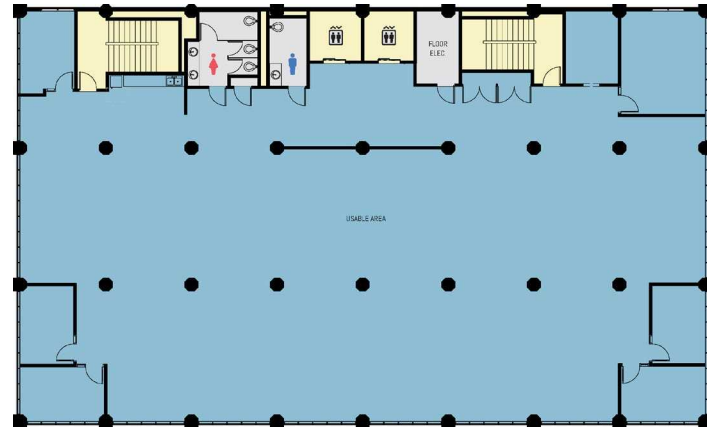
# 1423 PACIFIC

1411-1423 PACIFIC AVENUE, TACOMA, WA 98402

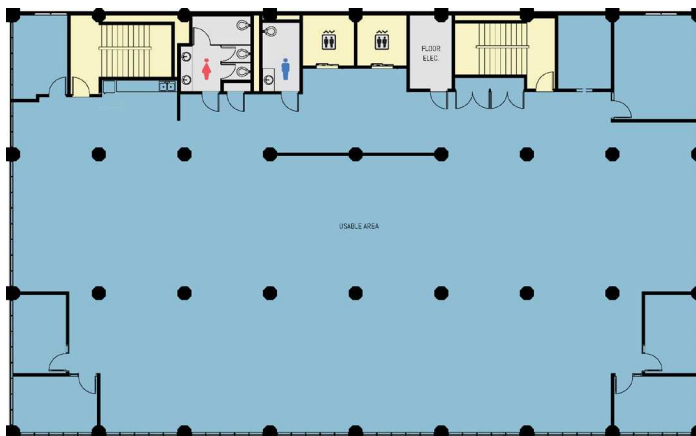
## FLOOR PLANS



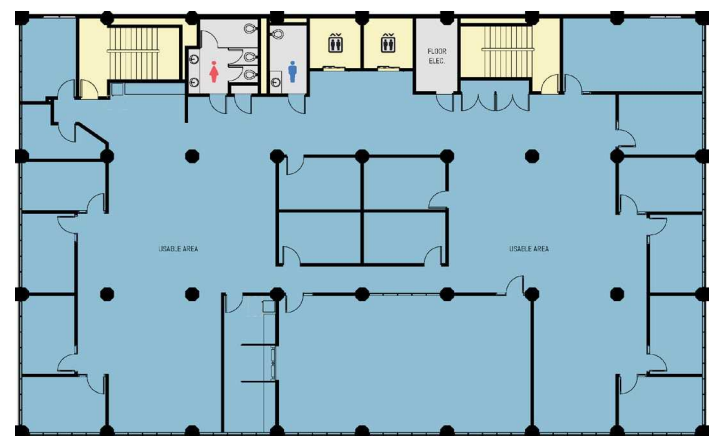
FLOOR 7



FLOOR 8



FLOOR 9



FLOOR 10

JOHN BAUDER  
jbauder@lee-associates.com  
D 253.238.0043

HARRISON LAIRD  
hlaird@lee-associates.com  
D 253.238.0044

All information furnished regarding property for sale, rental or financing is from sources deemed reliable, but no warranty or representation is made to the accuracy thereof and same is submitted to errors, omissions, change of price, rental or other conditions prior to sale, lease or financing or withdrawal without notice. No liability of any kind is to be imposed on the broker herein.