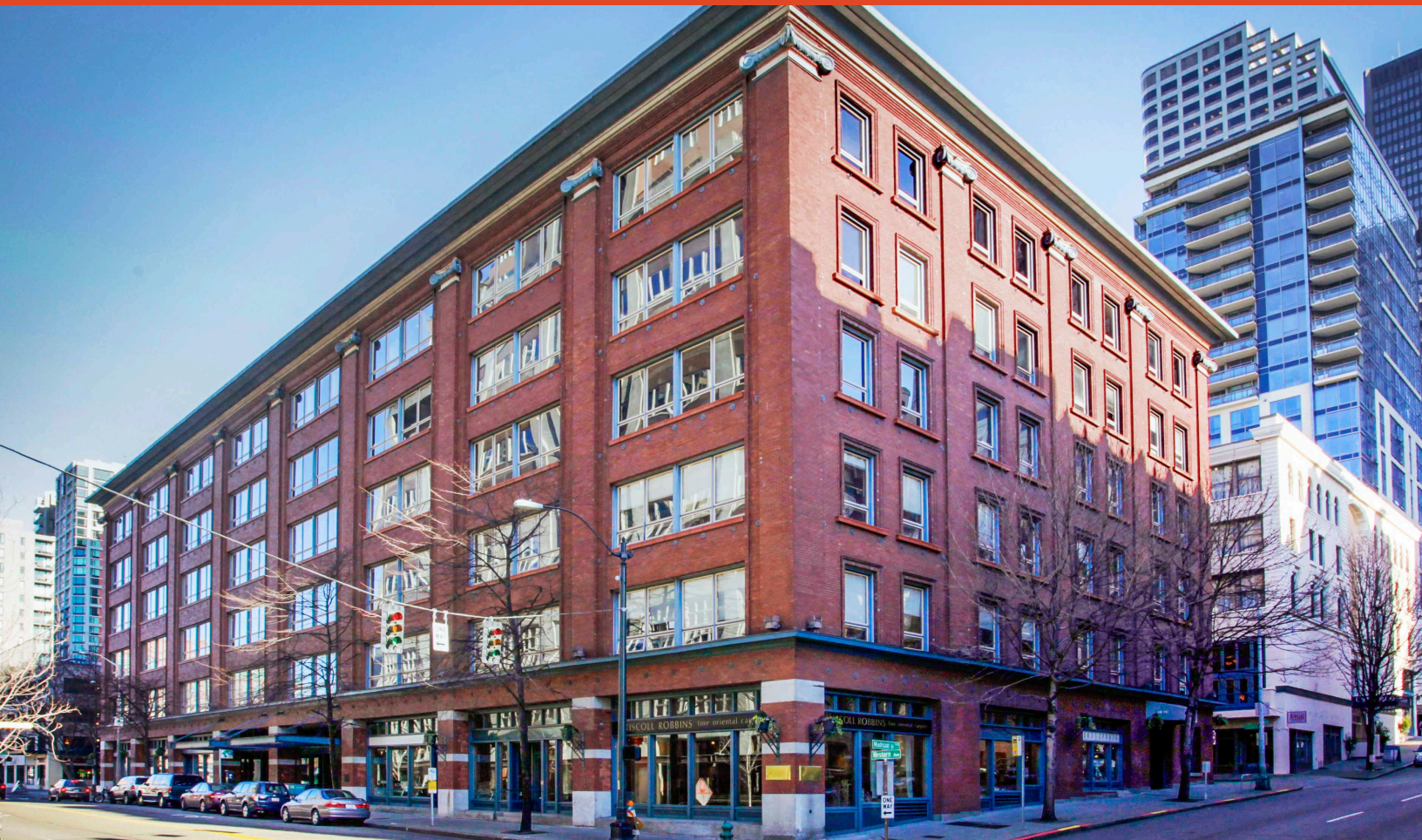




FOR LEASE

# National Building

1008 WESTERN AVENUE, SEATTLE, WA



Beautifully renovated classic timber and brick building in downtown Seattle

**JEFF HUNTINGTON**

206.296.9619

[jeff.huntington@kidder.com](mailto:jeff.huntington@kidder.com)

**JIM LOVSTED, CPM**

206.398.2271

[jim.lovsted@kidder.com](mailto:jim.lovsted@kidder.com)

**Kidder  
Mathews**

This information supplied herein is from sources we deem reliable. It is provided without any representation, warranty, or guarantee, expressed or implied as to its accuracy. Prospective Buyer or Tenant should conduct an independent investigation and verification of all matters deemed to be material, including, but not limited to, statements of income and expenses. Consult your attorney, accountant, or other professional advisor.

**KIDDER.COM**



**FOR LEASE**

# National Building

1008 WESTERN AVENUE, SEATTLE, WA

## Features

**FLEXIBLE DEMISING OPTIONS** on full floors

Half floors, ~11,500 RSF are like full floors

Private bathrooms & elevator lobby exposure

**CREATIVE** brick & timber space

**EASY ACCESS** to nearby public transportation

**WALKING DISTANCE** to the new Seattle Waterfront, ferry terminals, Pike Place Market, CBD and Pioneer Square

**ON-SITE** storage, secure bike room and building shower

**OPERABLE** windows

## Top Two Floors Suites 500 & 600

**CAN BE COMBINED** for 45,117 RSF

**EITHER CAN BE DEMISED** to approx. 6,500

**MIX** of open space & privates/conference rooms

**VIEWS** of Elliott Bay

**INTERNAL** stairwell

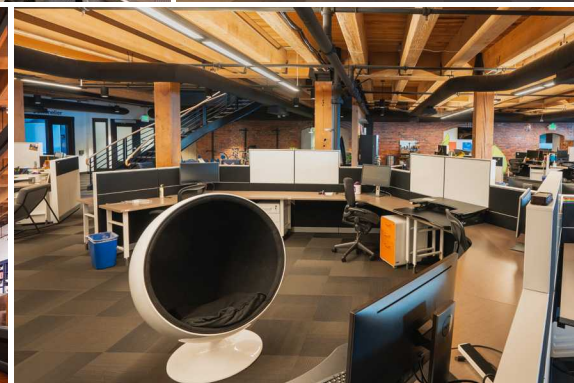
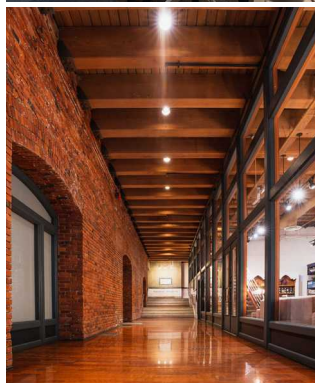
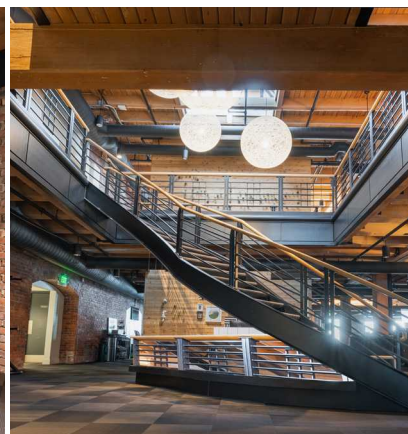
**PRIVATE** shower

**SUITE 500** 22,549 RSF

Mostly open plan w/ private shower

**SUITE 600** 22,568 RSF

Mostly open plan w/ meeting rooms/phone rooms



### OTHER AVAILABILITIES

Suite	RSF	Notes
403	±2,582	Open plan with 3 enclosed rooms
410	±2,788	Open plan with one private office, kitchen
203	±1,930	Corner suite 6 privates, open space
220	±4,941	Mix of open space & privates
1012	±1,084	Office/retail - open space. Frontage on Western
1007	±2,192	Office/retail open plan w/ Madison frontage
1001	±2,706	Retail/restaurant/office, Direct office off building lobby or via post alley

[KIDDER.COM](http://KIDDER.COM)

**km** Kidder Mathews

This information supplied herein is from sources we deem reliable. It is provided without any representation, warranty, or guarantee, expressed or implied as to its accuracy. Prospective Buyer or Tenant should conduct an independent investigation and verification of all matters deemed to be material, including, but not limited to, statements of income and expenses. Consult your attorney, accountant, or other professional advisor.

**FOR LEASE**

# National Building

1008 WESTERN AVENUE, SEATTLE, WA

## Suite 600

THE ENTIRE FLOOR SUITE IS  $\pm 22,568$  RSF



**JEFF HUNTINGTON**  
206.296.9619  
[jeff.huntington@kidder.com](mailto:jeff.huntington@kidder.com)

**JIM LOVSTED, CPM**  
206.398.2271  
[jim.lovsted@kidder.com](mailto:jim.lovsted@kidder.com)

**KIDDER.COM**

This information supplied herein is from sources we deem reliable. It is provided without any representation, warranty, or guarantee, expressed or implied as to its accuracy. Prospective Buyer or Tenant should conduct an independent investigation and verification of all matters deemed to be material, including, but not limited to, statements of income and expenses. Consult your attorney, accountant, or other professional advisor.



**FOR LEASE**

# National Building

1008 WESTERN AVENUE, SEATTLE, WA

## Suite 500

THE ENTIRE FLOOR SUITE IS  $\pm 22,549$  RSF



**JEFF HUNTINGTON**  
206.296.9619  
[jeff.huntington@kidder.com](mailto:jeff.huntington@kidder.com)

**JIM LOVSTED, CPM**  
206.398.2271  
[jim.lovsted@kidder.com](mailto:jim.lovsted@kidder.com)

**KIDDER.COM**

This information supplied herein is from sources we deem reliable. It is provided without any representation, warranty, or guarantee, expressed or implied as to its accuracy. Prospective Buyer or Tenant should conduct an independent investigation and verification of all matters deemed to be material, including, but not limited to, statements of income and expenses. Consult your attorney, accountant, or other professional advisor.



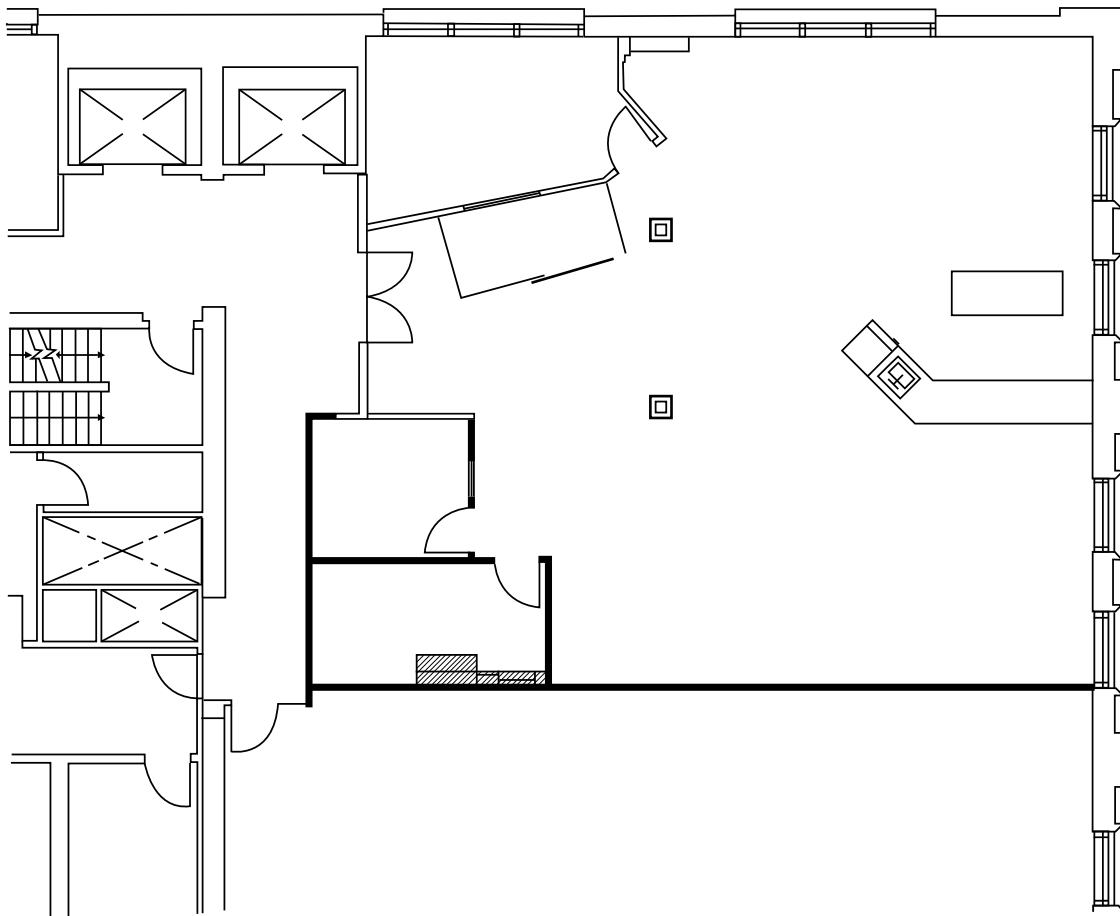
**FOR LEASE**

# National Building

1008 WESTERN AVENUE, SEATTLE, WA

## Suite 403

±2,582 RSF | AVAILABLE 2/1/2021



**JEFF HUNTINGTON**  
206.296.9619  
[jeff.huntington@kidder.com](mailto:jeff.huntington@kidder.com)

**JIM LOVSTED, CPM**  
206.398.2271  
[jim.lovsted@kidder.com](mailto:jim.lovsted@kidder.com)

**KIDDER.COM**

This information supplied herein is from sources we deem reliable. It is provided without any representation, warranty, or guarantee, expressed or implied as to its accuracy. Prospective Buyer or Tenant should conduct an independent investigation and verification of all matters deemed to be material, including, but not limited to, statements of income and expenses. Consult your attorney, accountant, or other professional advisor.



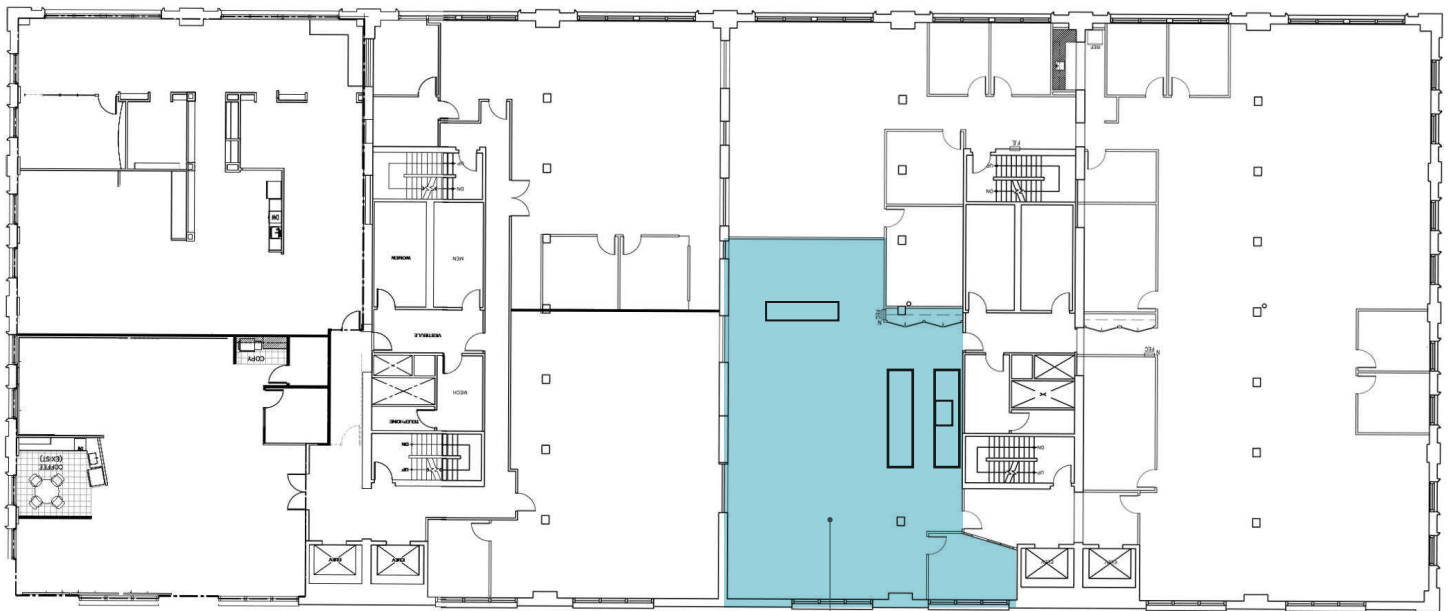
**FOR LEASE**

# National Building

1008 WESTERN AVENUE, SEATTLE, WA

## Suite 410

±2,788 RSF



**SUITE 410**  
**±2,788 RSF**

**JEFF HUNTINGTON**

206.296.9619

[jeff.huntington@kidder.com](mailto:jeff.huntington@kidder.com)

**JIM LOVSTED, CPM**

206.398.2271

[jim.lovsted@kidder.com](mailto:jim.lovsted@kidder.com)

**KIDDER.COM**

This information supplied herein is from sources we deem reliable. It is provided without any representation, warranty, or guarantee, expressed or implied as to its accuracy. Prospective Buyer or Tenant should conduct an independent investigation and verification of all matters deemed to be material, including, but not limited to, statements of income and expenses. Consult your attorney, accountant, or other professional advisor.



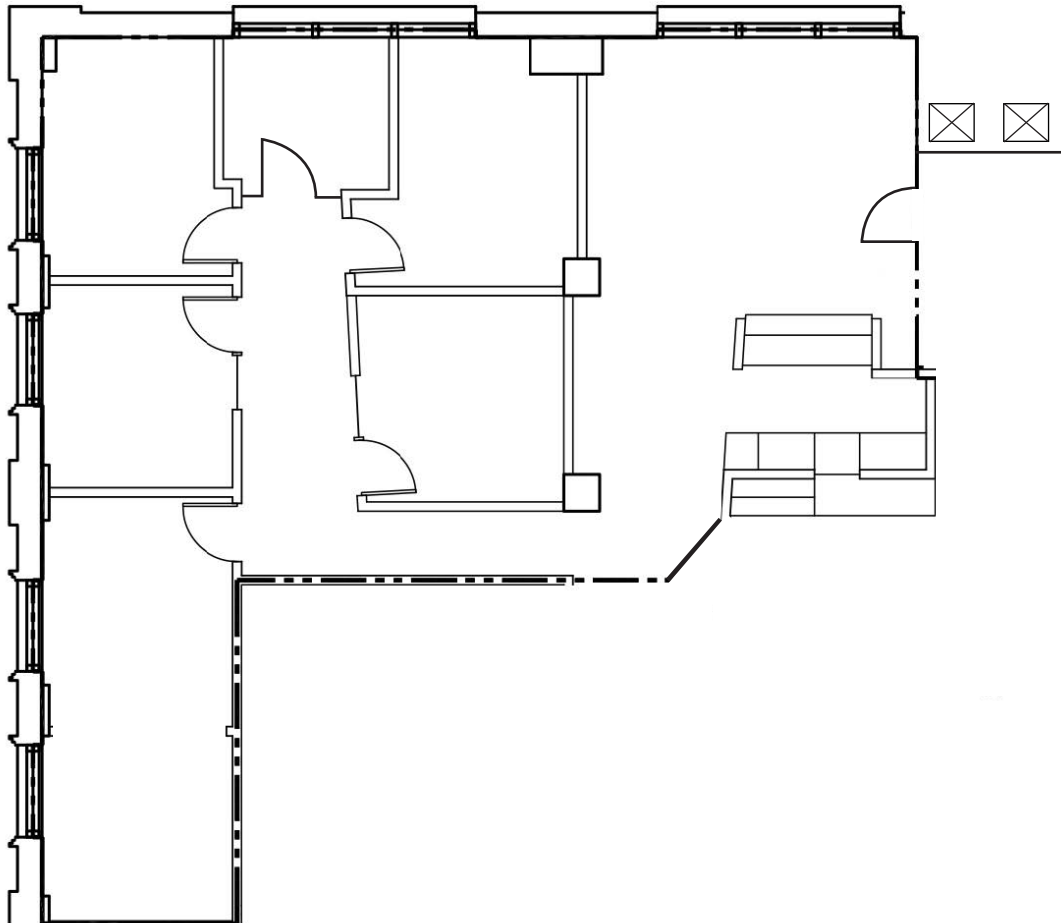
**FOR LEASE**

# National Building

1008 WESTERN AVENUE, SEATTLE, WA

## Suite 203

±1,930 RSF



**JEFF HUNTINGTON**  
206.296.9619  
[jeff.huntington@kidder.com](mailto:jeff.huntington@kidder.com)

**JIM LOVSTED, CPM**  
206.398.2271  
[jim.lovsted@kidder.com](mailto:jim.lovsted@kidder.com)

**KIDDER.COM**

This information supplied herein is from sources we deem reliable. It is provided without any representation, warranty, or guarantee, expressed or implied as to its accuracy. Prospective Buyer or Tenant should conduct an independent investigation and verification of all matters deemed to be material, including, but not limited to, statements of income and expenses. Consult your attorney, accountant, or other professional advisor.



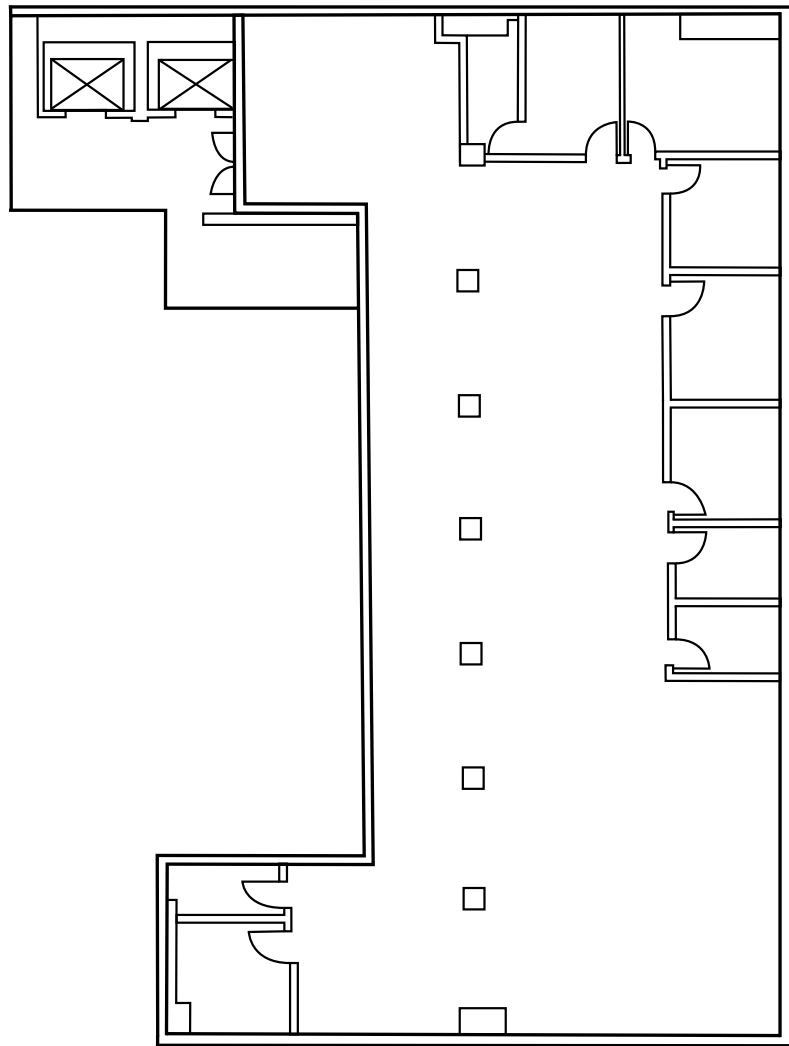
**FOR LEASE**

# National Building

1008 WESTERN AVENUE, SEATTLE, WA

## Suite 220

±4,941 RSF



**JEFF HUNTINGTON**  
206.296.9619  
[jeff.huntington@kidder.com](mailto:jeff.huntington@kidder.com)

**JIM LOVSTED, CPM**  
206.398.2271  
[jim.lovsted@kidder.com](mailto:jim.lovsted@kidder.com)

**KIDDER.COM**

This information supplied herein is from sources we deem reliable. It is provided without any representation, warranty, or guarantee, expressed or implied as to its accuracy. Prospective Buyer or Tenant should conduct an independent investigation and verification of all matters deemed to be material, including, but not limited to, statements of income and expenses. Consult your attorney, accountant, or other professional advisor.



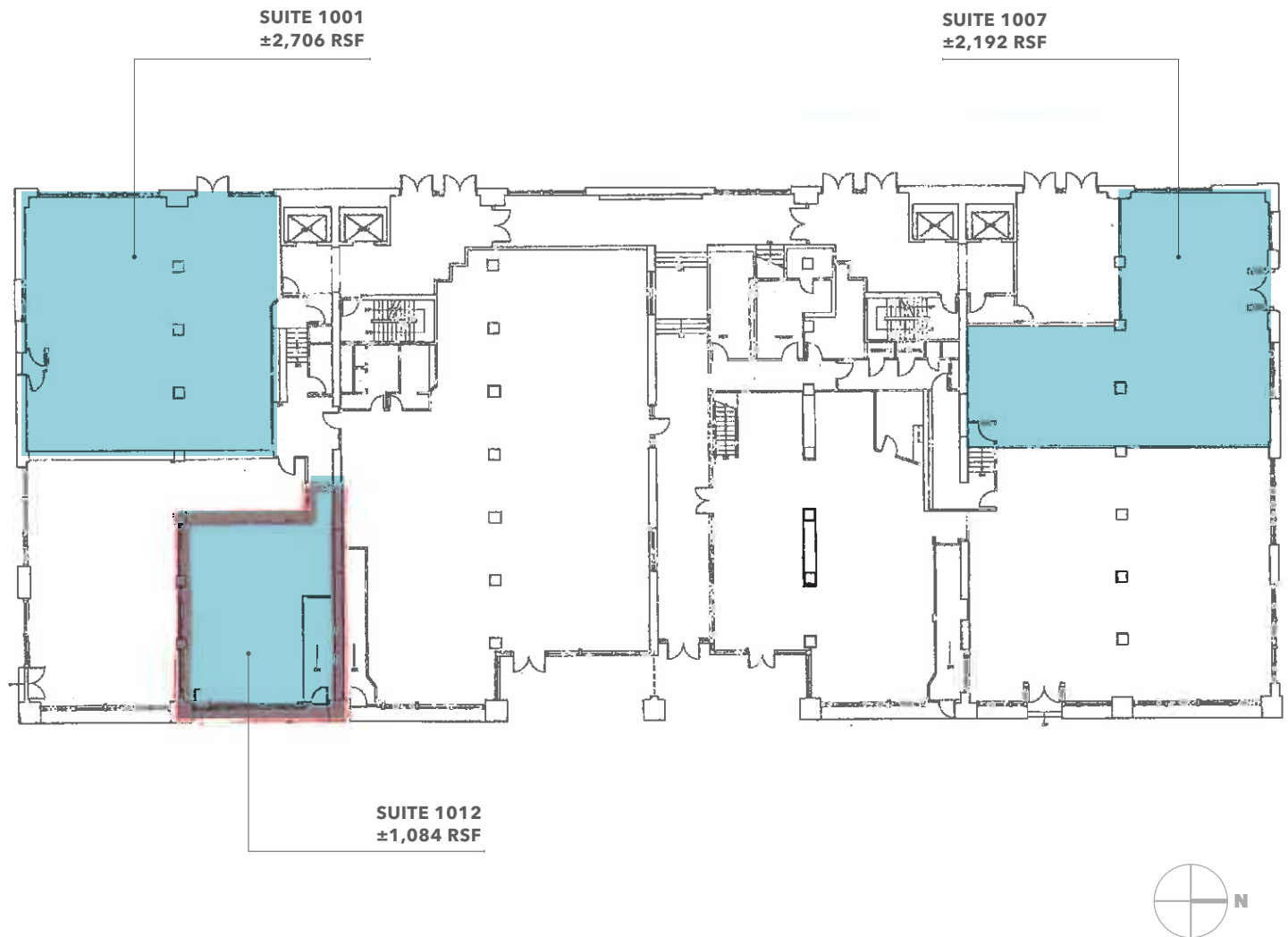


**FOR LEASE**

# National Building

1008 WESTERN AVENUE, SEATTLE, WA

## Suite 1001, 1007, & 1012



**JEFF HUNTINGTON**  
206.296.9619  
[jeff.huntington@kidder.com](mailto:jeff.huntington@kidder.com)

**JIM LOVSTED, CPM**  
206.398.2271  
[jim.lovsted@kidder.com](mailto:jim.lovsted@kidder.com)

**KIDDER.COM**

This information supplied herein is from sources we deem reliable. It is provided without any representation, warranty, or guarantee, expressed or implied as to its accuracy. Prospective Buyer or Tenant should conduct an independent investigation and verification of all matters deemed to be material, including, but not limited to, statements of income and expenses. Consult your attorney, accountant, or other professional advisor.

