

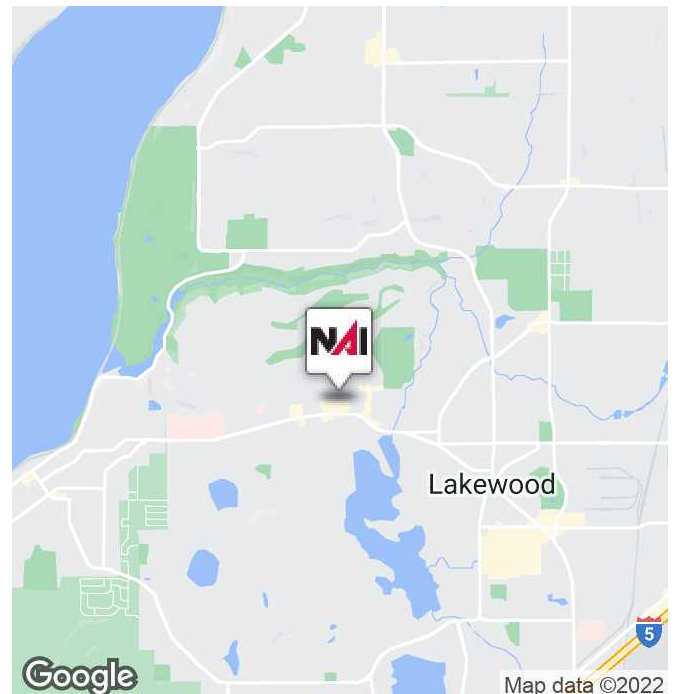


## Oakbrook Plaza

8101 Steilacoom Boulevard SW  
Lakewood, Washington 98498

### Property Highlights

- Retail Space For Lease
- Suite 6B: 2,700 Square Feet
- Great Location on Main Commuter Route
- Abundant Parking
- Potential for Drive through at End Cap Space
- Roll-Up back door for easy access/flexible uses
- Anchored by McDonald's, Ace Hardware, Dollar Tree, and Key Bank
- Tenant Improvement Allowance
- \$12 Per Square Foot plus NNN



**John Pavolka**

Associate | 253.203.1327  
jpavolka@nai-psp.com

**Aaron Rosen**

Vice President | 253.203.1319  
arosen@nai-psp.com

THE INFORMATION SUPPLIED HEREIN IS FROM SOURCES WE DEEM RELIABLE. IT IS PROVIDED WITHOUT ANY REPRESENTATION, WARRANTY OR GUARANTEE, EXPRESSED OR IMPLIED, AS TO ITS ACCURACY. PROSPECTIVE BUYER OR TENANT SHOULD CONDUCT AN INDEPENDENT INVESTIGATION AND VERIFICATION OF ALL MATTERS DEEMED TO BE MATERIAL, INCLUDING, BUT NOT LIMITED TO, STATEMENTS OF INCOME AND EXPENSES. CONSULT YOUR ATTORNEY, ACCOUNTANT OR OTHER PROFESSIONAL ADVISOR.



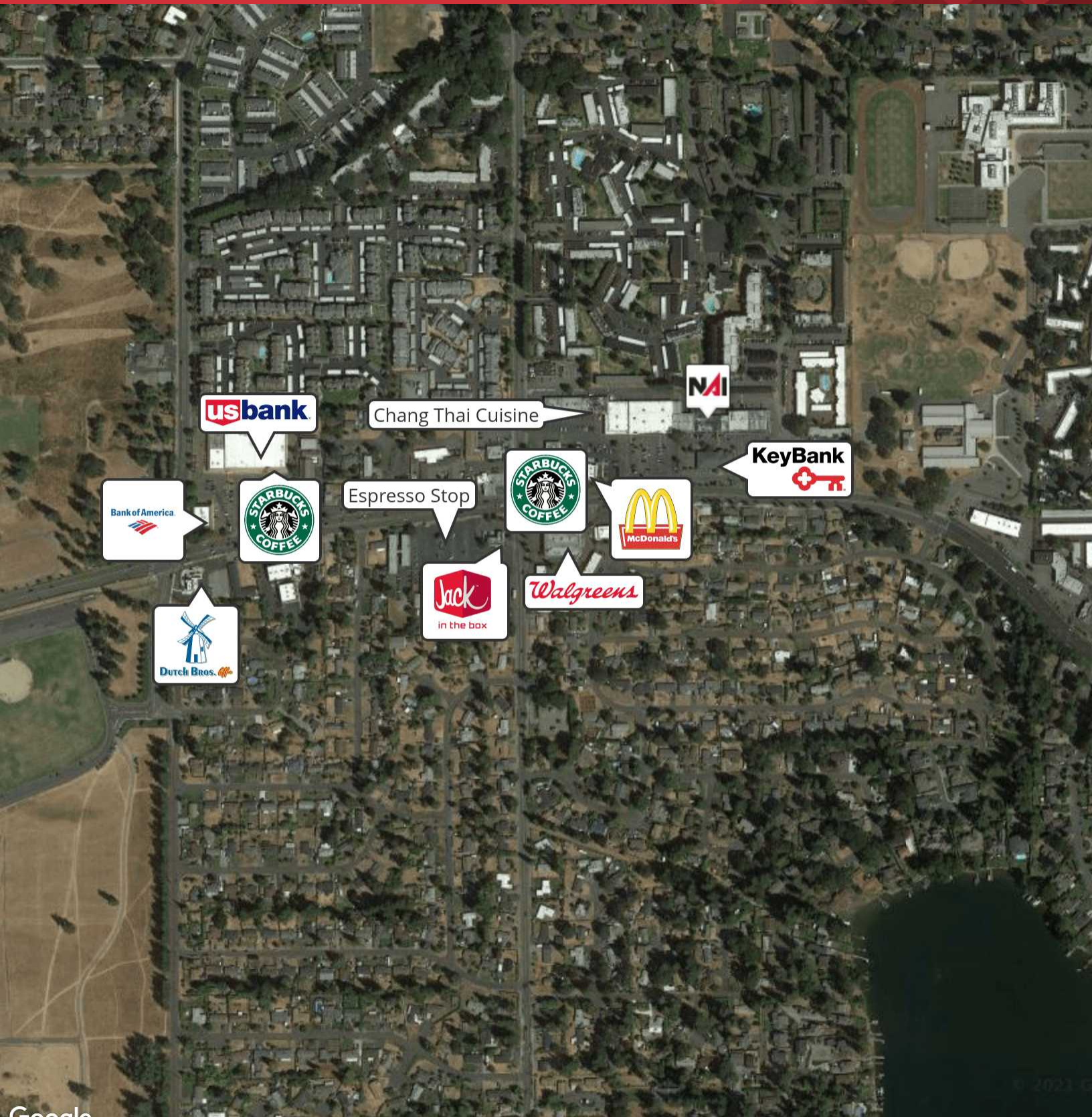
FOR LEASE



RETAIL



2,700 SF



Google

Imagery ©2021, Maxar Technologies, U.S. Geological Survey, USDA Farm Service Agency

**John Pavolka**  
Associate | 253.203.1327  
jpavolka@nai-psp.com

**Aaron Rosen**  
Vice President | 253.203.1319  
arosen@nai-psp.com



<https://www.nai-psp.com>

THE INFORMATION SUPPLIED HEREIN IS FROM SOURCES WE DEEM RELIABLE. IT IS PROVIDED WITHOUT ANY REPRESENTATION, WARRANTY OR GUARANTEE, EXPRESSED OR IMPLIED, AS TO ITS ACCURACY. PROSPECTIVE BUYER OR TENANT SHOULD CONDUCT AN INDEPENDENT INVESTIGATION AND VERIFICATION OF ALL MATTERS DEEMED TO BE MATERIAL, INCLUDING, BUT NOT LIMITED TO, STATEMENTS OF INCOME AND EXPENSES. CONSULT YOUR ATTORNEY, ACCOUNTANT OR OTHER PROFESSIONAL ADVISOR.



FOR LEASE

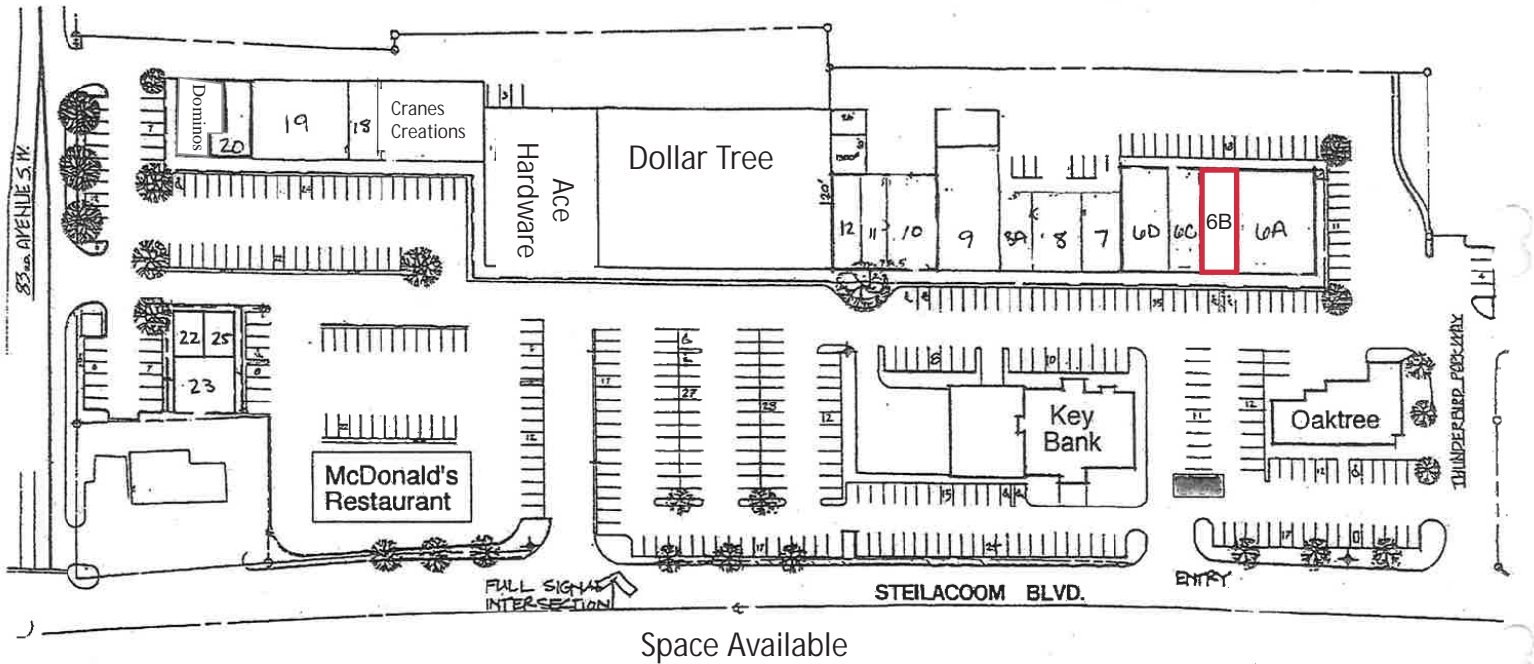


RETAIL



2,700 SF

### Oakbrook Plaza Site Plan



- Suite 6B: 2,700 Square Feet

**John Pavolka**

Associate | 253.203.1327  
jpavolka@nai-psp.com

**Aaron Rosen**

Vice President | 253.203.1319  
arosen@nai-psp.com





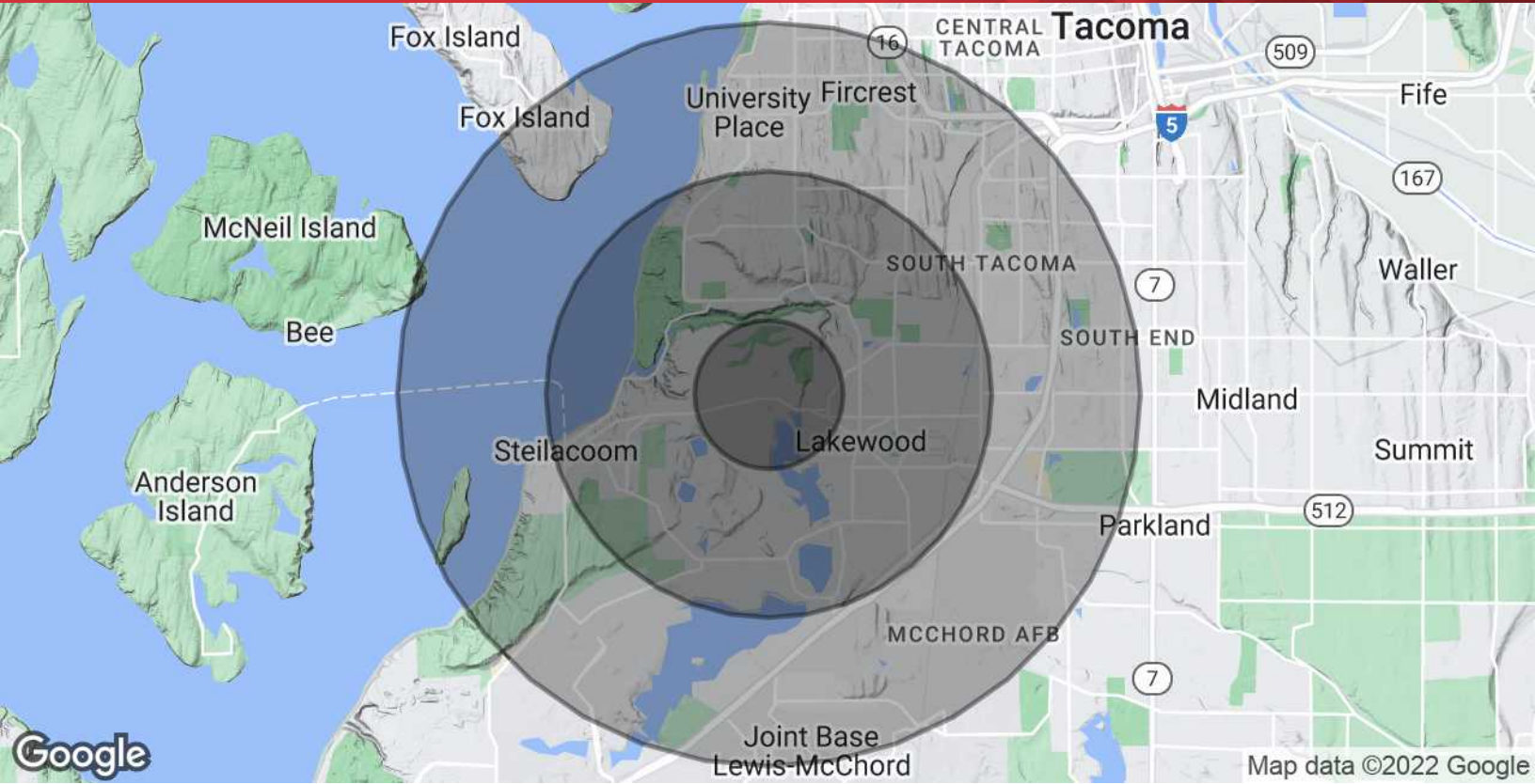
FOR LEASE



RETAIL



2,700 SF



**POPULATION**

**1 MILE**

**3 MILES**

**5 MILES**

Total Population	9,857	79,309	182,109
Average age	38.7	38.9	35.7
Average age (Male)	38.3	36.9	34.0
Average age (Female)	38.7	40.4	37.1

**HOUSEHOLDS & INCOME**

**1 MILE**

**3 MILES**

**5 MILES**

Total households	3,964	32,668	74,494
# of persons per HH	2.5	2.4	2.4
Average HH income	\$77,414	\$72,071	\$63,201
Average house value		\$285,099	\$311,784

\* Demographic data derived from 2010 US Census

**John Pavolka**

Associate | 253.203.1327  
jpavolka@nai-psp.com

**Aaron Rosen**

Vice President | 253.203.1319  
arosen@nai-psp.com

