

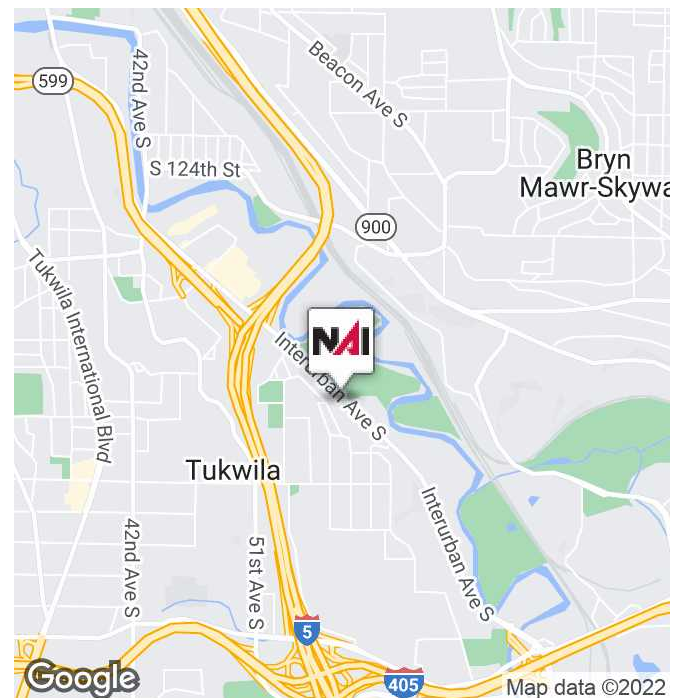


# Evergreen Business Capital Building

13925 Interurban Ave S, Tukwila, WA 98168

## Property Highlights

- 1,593 rentable square feet available
- Outstanding freeway access to I-5 and I-405
- Located on major Metro bus line
- Excellent visibility from Interurban Avenue with monument signage available
- Adjacent to Foster Golf Course
- Minutes to downtown Seattle, SeaTac Airport and Southcenter Mall
- No business and occupancy (B&O) tax in Tukwila
- US Postal Service allows companies to utilize a Seattle address
- UPS drop box on-site
- Rental rate is \$23.50/RSF, full service





FOR LEASE



OFFICE BUILDING



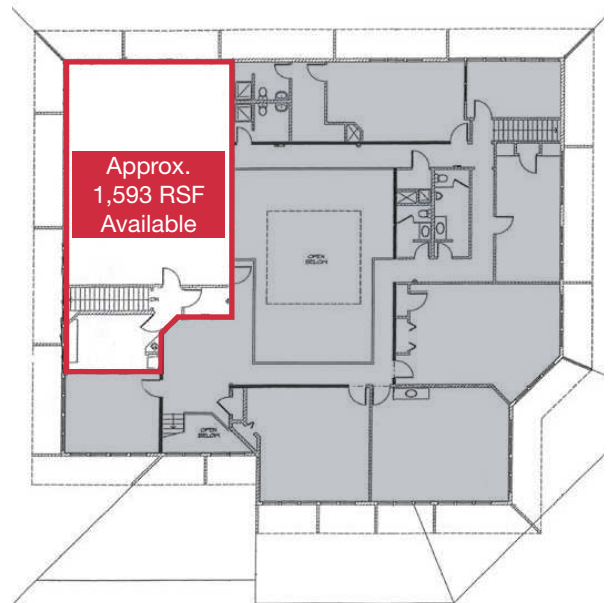
1,593 SF



### FIRST FLOOR



### SECOND FLOOR



**Mike George**  
Partner | 425.586.5618  
mgeorge@nai-psp.com

**Tony Rona**  
Vice President | 425.586.5634  
trona@nai-psp.com

THE INFORMATION SUPPLIED HEREIN IS FROM SOURCES WE DEEM RELIABLE. IT IS PROVIDED WITHOUT ANY REPRESENTATION, WARRANTY OR GUARANTEE, EXPRESSED OR IMPLIED, AS TO ITS ACCURACY. PROSPECTIVE BUYER OR TENANT SHOULD CONDUCT AN INDEPENDENT INVESTIGATION AND VERIFICATION OF ALL MATTERS DEEMED TO BE MATERIAL, INCLUDING, BUT NOT LIMITED TO, STATEMENTS OF INCOME AND EXPENSES. CONSULT YOUR ATTORNEY, ACCOUNTANT OR OTHER PROFESSIONAL ADVISOR.