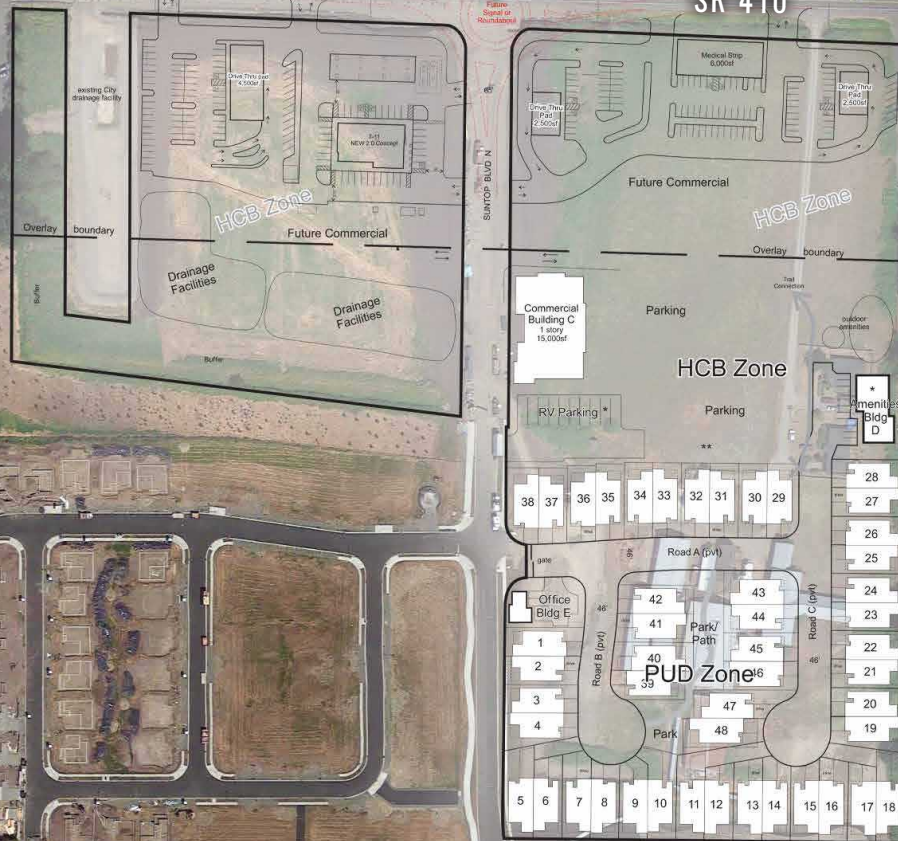


# FOR LEASE

SE Corner of Hwy 410 & Suntop Blvd N  
Enumclaw, WA 98022

PROPOSED SIGNAL  
OR ROUNDABOUT  
INTERSECTION

SR 410



## GATEWAY RETAIL

Josh Parnell | Justin Holmes

First Western Properties-Tacoma Inc. | 253.472.0404  
6402 Tacoma Mall Blvd, Tacoma, WA 98409 | fwp-inc.com

**ENUMCLAW, WA** is a growing city on Highway 410 & Highway 169 and is the last city before heading up to Mt. Rainier and Crystal Mountain Ski Resort.

## AVAILABLE:

4,500 SF DRIVE THRU

2,500 SF DRIVE THRU

2,500 SF DRIVE THRU

6,000 SF MEDICAL

15,000 SF COMMERCIAL

GROUND LEASE OR BUILD TO SUIT

CALL FOR DETAILS

## DEMOGRAPHICS

Regis - 2022

### POPULATION

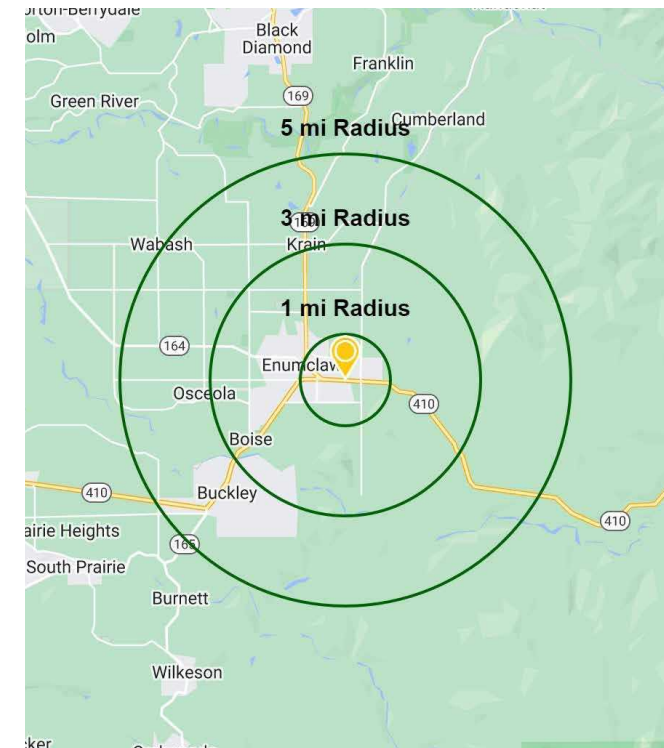
Mile 1	Mile 3	Mile 5
3,650	16,683	27,082

### AVERAGE HH INCOME

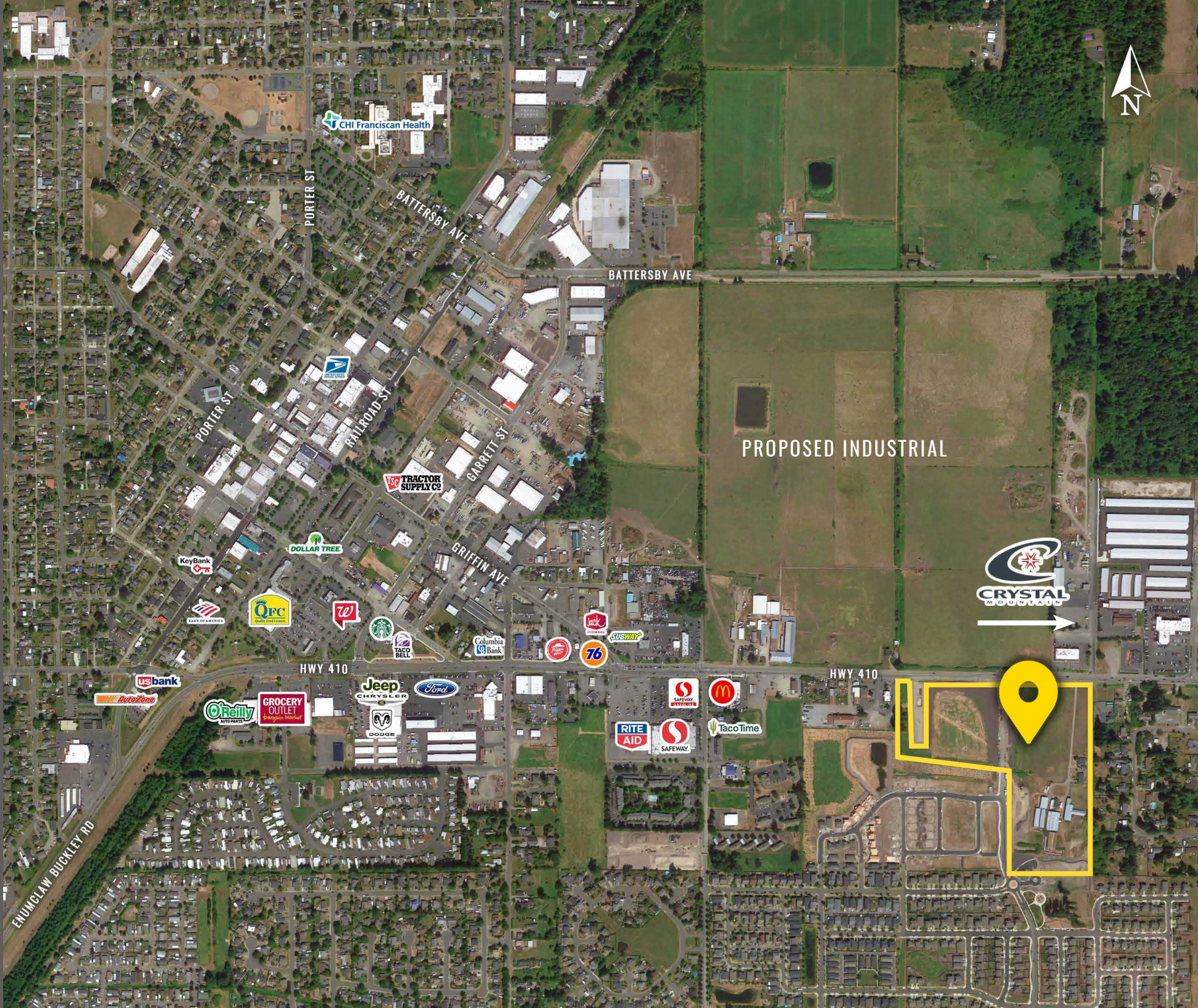
Mile 1	Mile 3	Mile 5
\$88,953	\$97,133	\$105,866

### DAYTIME POPULATION

Mile 1	Mile 3	Mile 5
406	799	1,093



LOCATION AERIAL



PROPOSED INDUSTRIAL



CHI Franciscan Health

BATTERSBY AVE

BATTERSBY AVE

PORTER ST

PORTER ST

RAILROAD ST

GARRETT ST

GRIFFIN AVE

TRACTOR SUPPLY CO

DOLLAR TREE

KeyBank

QFC

Walgreens

Starbucks

TACO BELL

Columbia Bank

76

SUBWAY

HWY 410

HWY 410

usbank

AutoZone

O'Reilly

GROCERY OUTLET

Jeep CHRYSLER

Ford

DODGE

SAFEWAY

McDonald's

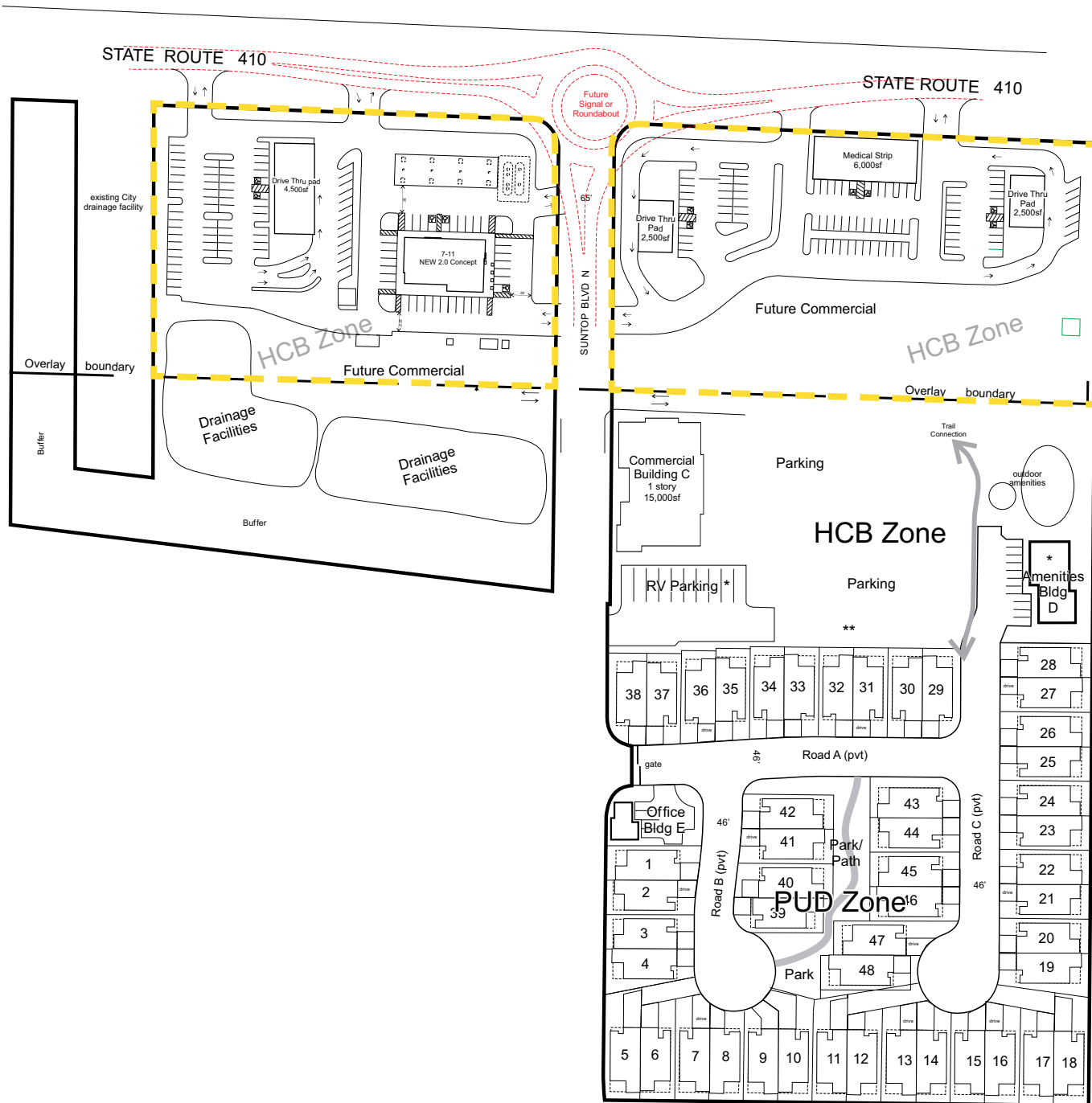
RITE AID

SAFEWAY

TacoTime

ENUMCLAW BUCKEY RD

# SITE PLAN



TACOMA | KIRKLAND | PORTLAND



RELATIONSHIP FOCUSED. RESULTS DRIVEN.

**JOSH PARNELL**

253.284.3630  
josh@firstwesternproperties.com

**JUSTIN HOLMES**

253.447.2282  
justin@firstwesternproperties.com



First Western Properties—Tacoma Inc. | 253.472.0404  
6402 Tacoma Mall Blvd, Tacoma, WA 98409 | fwp-inc.com

© First Western Properties, Inc. DISCLAIMER: The above information has been secured from sources believed to be reliable, however, no representations are made to its accuracy. Prospective tenants or buyers should consult their professional advisors and conduct their own independent investigation. Properties are subject to change in price and/or availability without notice.