

OFFICE SPACE AVAILABLE

3,051-7,343 SF

\$38.00/SF

Modified Gross

\$ 1.20/SF, Additional Expenses



REDMOND TOWN CENTER

Office Space For Lease

7525 166th Avenue NE | Redmond, WA 98052

CHAD WALDBAUM, ccim
chadw@jshproperties.com
425.531.7098

 **JSH | PROPERTIES, INC.**

7325 166TH AVENUE NE, SUITE F-260 | REDMOND, WA 98052
425.455.0500 | www.jshproperties.com



REDMOND
TOWN CENTER

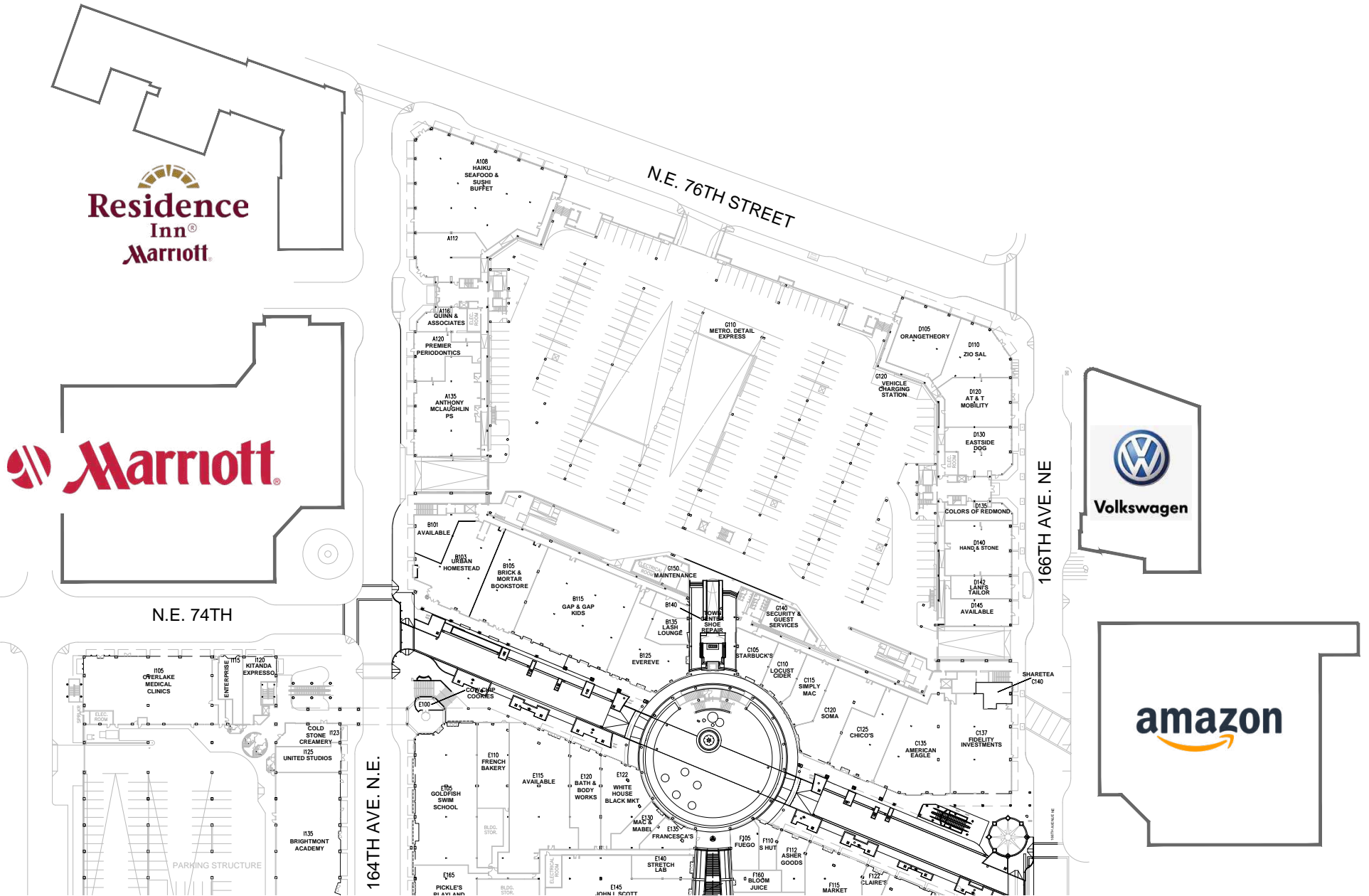
7525 166TH AVE NE REDMOND, WA 98052

- OPERATING EXPENSES** \$ 1.20/SF Approximate janitorial and water billed directly to Tenant
- PARKING** Free, plentiful parking
- AMENITIES** Over 120 retailers, restaurants, fitness, and three hotels
- MANAGEMENT** On-site management and 24/7 security

Redmond Town Center is an open-air urban village featuring two levels of office and retail, with over 120 stores, restaurants, healthcare, fitness, entertainment, and three hotels. Located just off of SR-520 approximately 12 miles from Seattle, 8 miles NE of Bellevue and just over 2 miles from Microsoft's World Headquarters Campus. Featuring a strong daytime employment base which includes Microsoft, AT&T, and Amazon.



REDMOND TOWN CENTER LOWER LEVEL SITE MAP



THE INFORMATION CONTAINED HEREIN HAS BEEN GIVEN TO US BY SOURCES WE DEEM RELIABLE. WE HAVE NO REASON TO DOUBT ITS ACCURACY, BUT WE DO NOT GUARANTEE IT. ALL INFORMATION SHOULD BE VERIFIED PRIOR TO PURCHASE OR LEASE. SITE PLANS ARE NOT TO SCALE. MERCHANTS AND RATES ARE SUBJECT TO CHANGE

REDMOND TOWN CENTER UPPER LEVEL SITE MAP

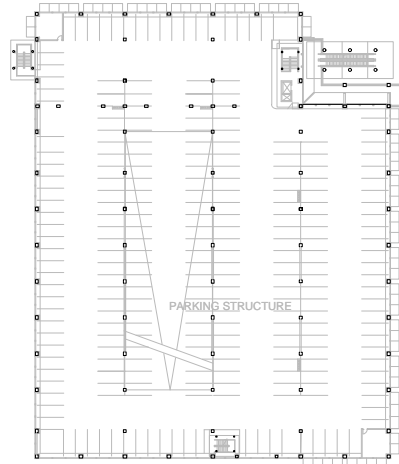


AVAILABLE OFFICE

3,051 SF	Suite C245
3,269 SF	Suite D230* *available 12-01-2021
4,074 SF	Suite D240
3,551 SF	Suite F235

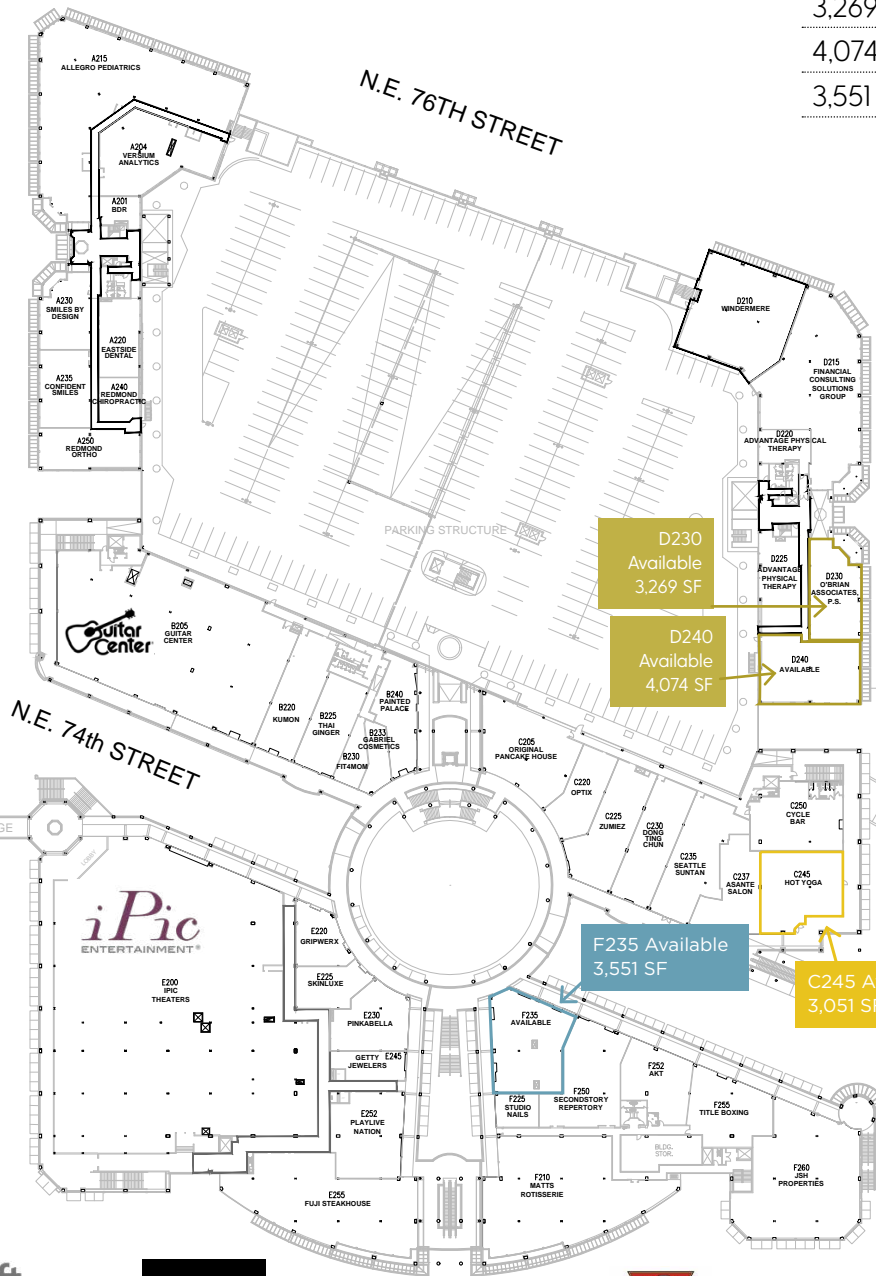
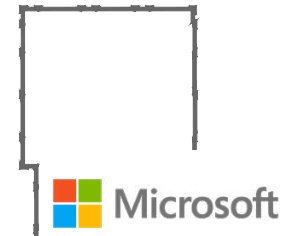


N.E. 74TH



N.E. 73rd WA

164TH AVE. N.E.



166TH AVE. NE

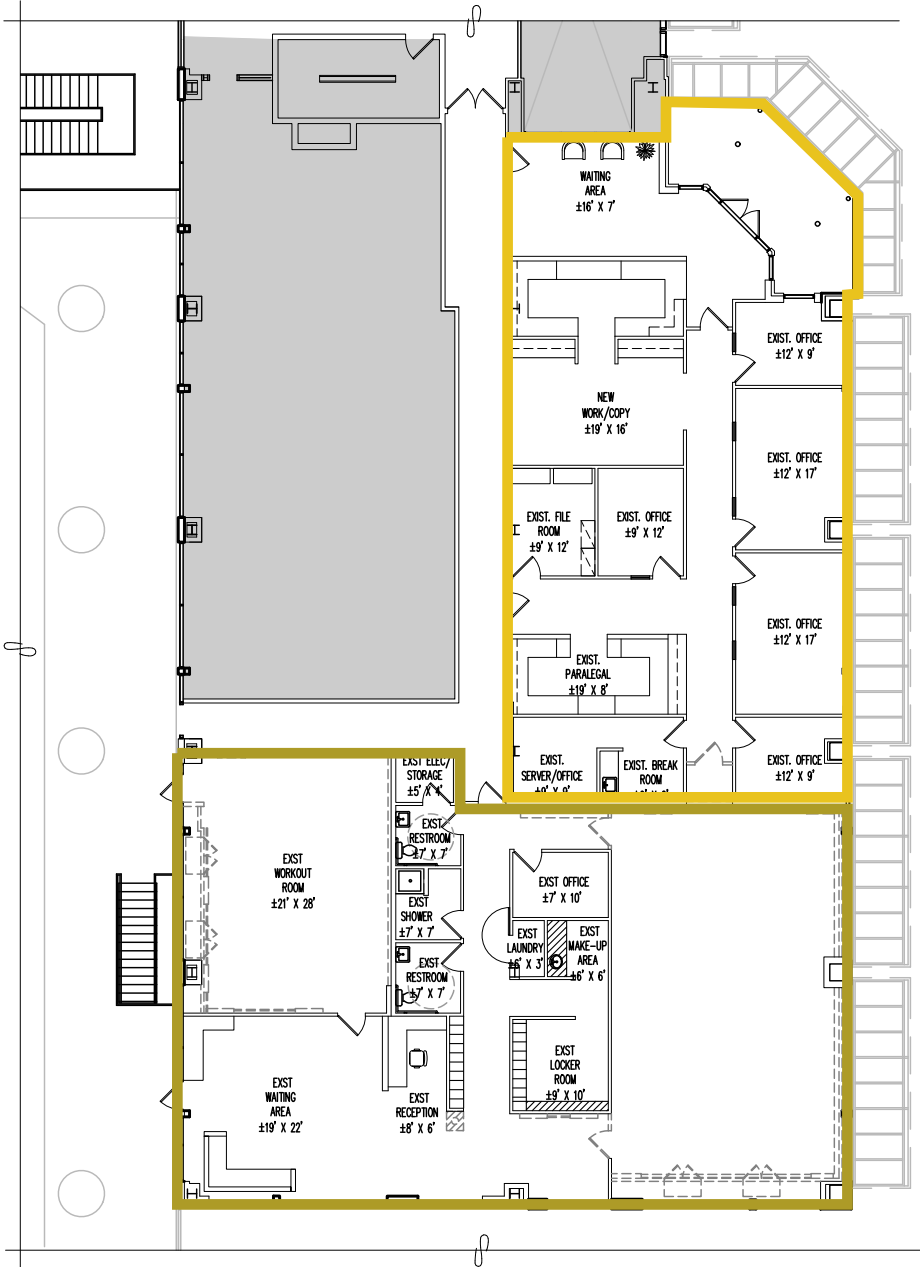






SUITE D230 & D240

CAN BE COMBINED FOR 7,343 SF.
Conceptual Space Plan Layouts Available.



SUITE D230 | 3,269 SF

Available 12-01-2021

SUITE D240 | 4,074 SF