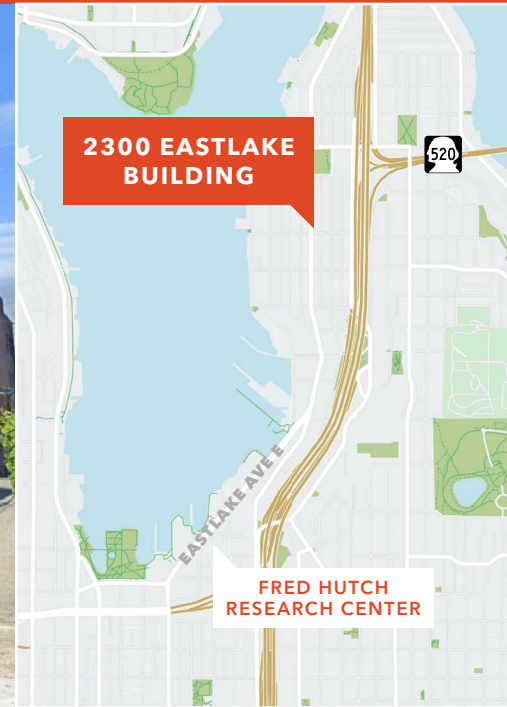




FOR LEASE

# 2300 Eastlake Building

2300 EASTLAKE AVENUE E, SEATTLE, WA



**2ND FLOOR:** 10,361 RSF

**FULL FLOOR** opportunity

**PERIMETER PRIVATES** with open space, conference rooms, kitchen, workroom, & reception

**HEART** of Eastlake neighborhood

**SHOWERS & BIKE STORAGE** located in the building

**ABUNDANT** on-site, covered parking

**EASY ACCESS** to I-5, University of Washington, South Lake Union, and CBD

**86** walk score

**LOCAL** ownership

**TIM FOSTER**  
206.296.9618  
[tim.foster@kidder.com](mailto:tim.foster@kidder.com)

**JEFF HUNTINGTON**  
206.296.9619  
[jeff.huntington@kidder.com](mailto:jeff.huntington@kidder.com)

[KIDDER.COM](http://KIDDER.COM)

**Kidder Mathews**

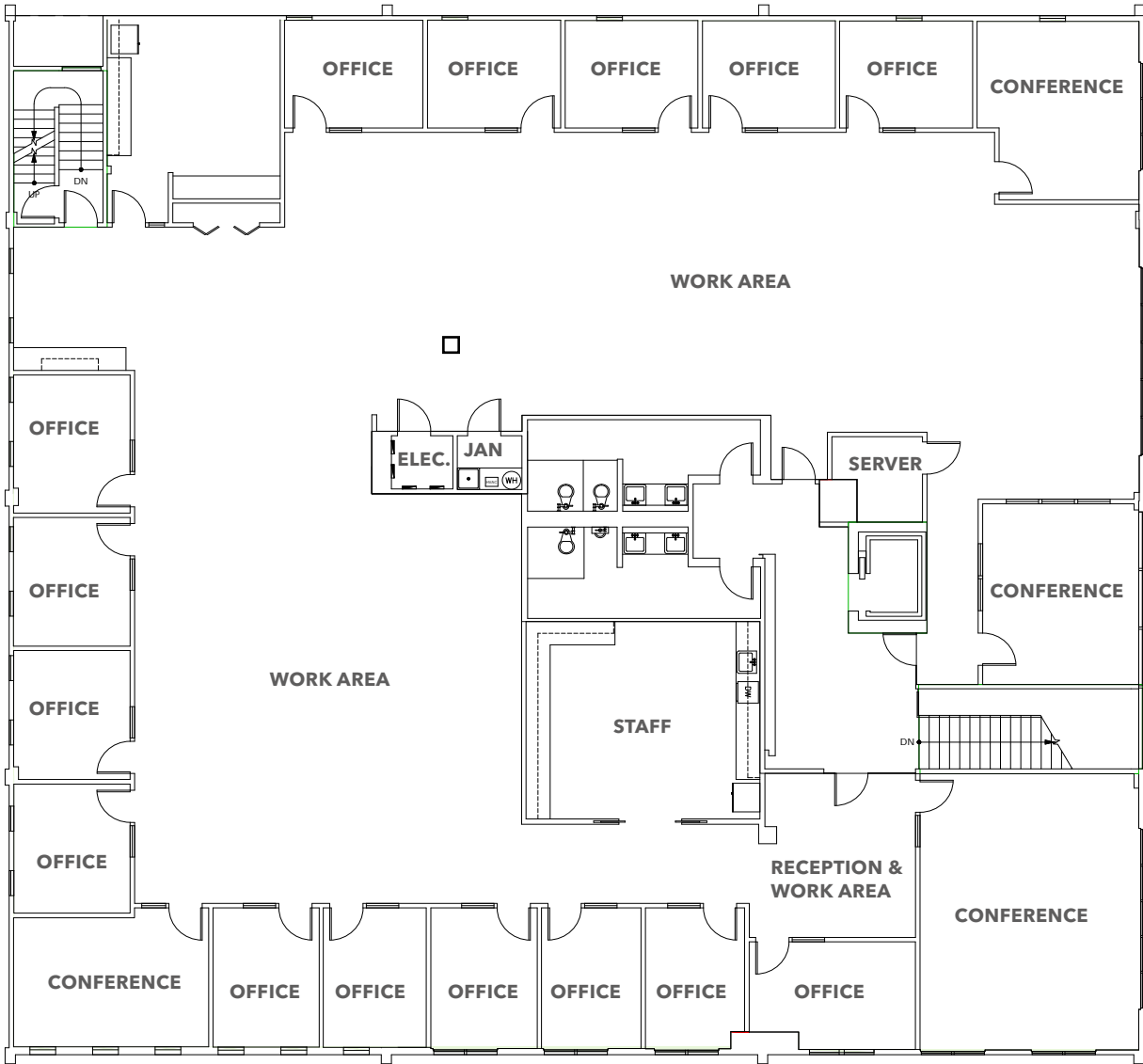
This information supplied herein is from sources we deem reliable. It is provided without any representation, warranty, or guarantee, expressed or implied as to its accuracy. Prospective Buyer or Tenant should conduct an independent investigation and verification of all matters deemed to be material, including, but not limited to, statements of income and expenses. Consult your attorney, accountant, or other professional advisor.

**FOR LEASE**

# 2300 Eastlake Bulding

2300 EASTLAKE AVENUE E, SEATTLE, WA

## Second Floor



**TIM FOSTER**

206.296.9618

[tim.foster@kidder.com](mailto:tim.foster@kidder.com)

**JEFF HUNTINGTON**

206.296.9619

[jeff.huntington@kidder.com](mailto:jeff.huntington@kidder.com)

**KIDDER.COM**

This information supplied herein is from sources we deem reliable. It is provided without any representation, warranty, or guarantee, expressed or implied as to its accuracy. Prospective Buyer or Tenant should conduct an independent investigation and verification of all matters deemed to be material, including, but not limited to, statements of income and expenses. Consult your attorney, accountant, or other professional advisor.

