

FOR LEASE

600 NW Richmond Beach Road
Shoreline, Washington



THE SHOPS AT RICHMOND BEACH

First Western Properties, Inc. | 425.822.5522 | fwp-inc.com
11621 97th Lane NE, Kirkland, Washington 98034

600 NW RICHMOND BEACH ROAD:

1,210 SF \$30-\$35 PSF PLUS NNN

1,600 SF \$30-\$35 PSF PLUS NNN

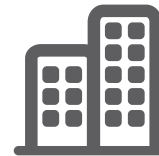
- Pad Space: 1,210 SF, Built-out as Medical Office
- Inline Space: 1,600 SF, Built-Out as Hair Salon
- Recently Remodeled Center
- Anchored By: QFC & Swedish Medical
- Join: Starbucks, The Greek Kitchen, Beach House Greetings, Heritage Bank, and More!



Population



Average HH Income

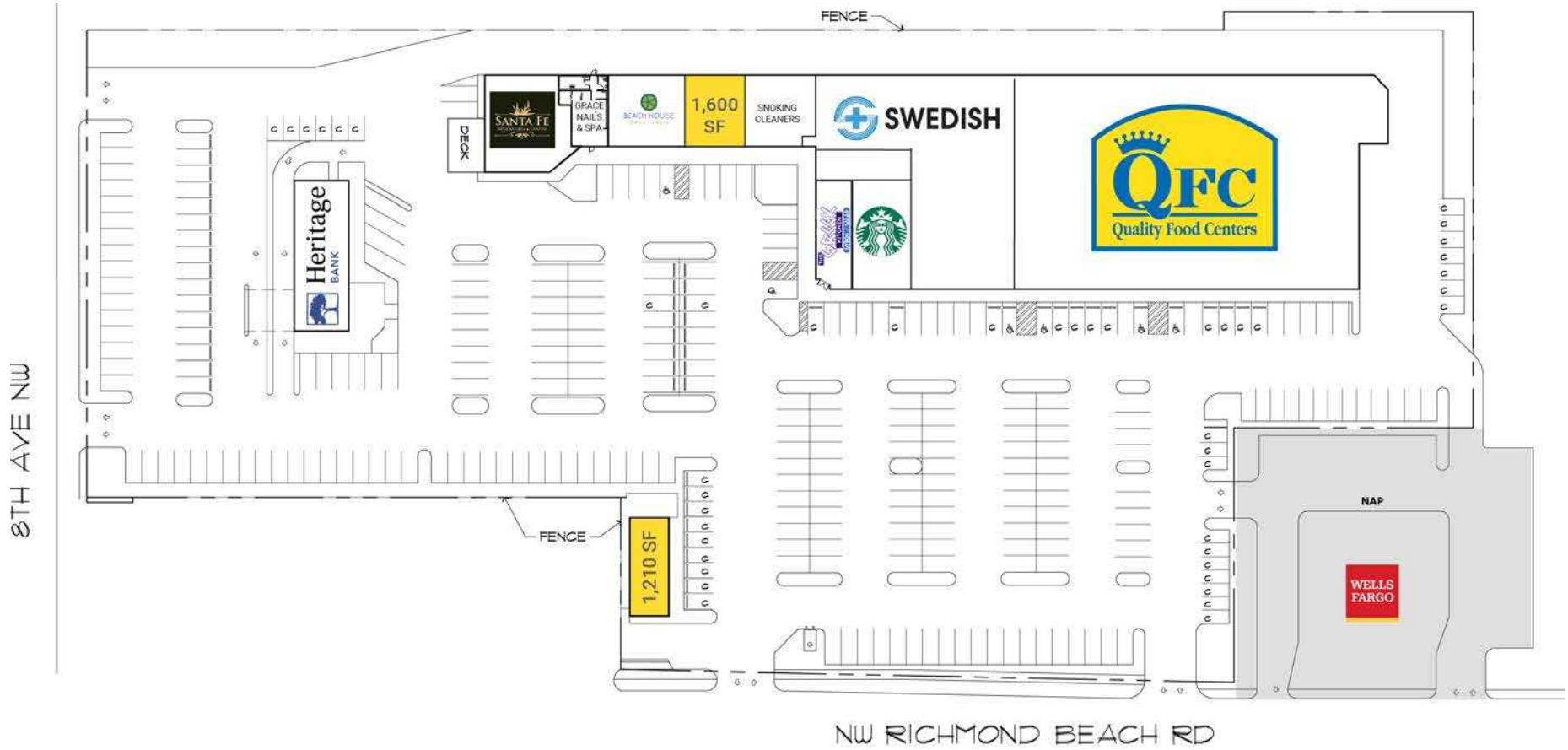


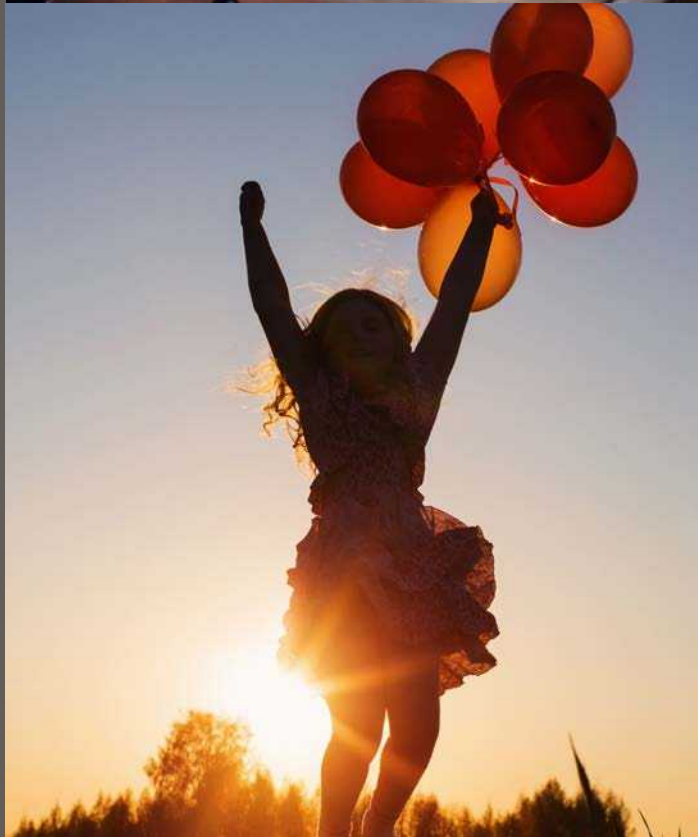
Daytime Population

Regis - 2020

	Population	Average HH Income	Daytime Population
Mile 1	17,151	\$131,164	5,240
Mile 3	99,858	\$113,433	29,234
Mile 5	252,953	\$111,834	81,991

SITE PLAN





SHORELINE, WA is made up of 14 well defined neighborhoods, each with its own character. It shares the south border with Seattle and downtown Seattle is approximately 10 miles away. Shoreline is bordered on the west by Puget Sound, on the north by Edmonds, and on the east by Lake Forest Park. Shoreline residents enjoy abundant parks and stellar public and private schools that are consistently recognized for strong test scores and active community support.

KIRKLAND | TACOMA | PORTLAND | SEATTLE



RELATIONSHIP FOCUSED. RESULTS DRIVEN.

ANGELA OLIVERI

425.250.3281
aoliveri@fwp-inc.com



First Western Properties, Inc. | 425.822.5522
11621 97th Lane NE Kirkland, WA 98034 | fwp-inc.com

© First Western Properties, Inc. DISCLAIMER: The above information has been secured from sources believed to be reliable, however, no representations are made to its accuracy. Prospective tenants or buyers should consult their professional advisors and conduct their own independent investigation. Properties are subject to change in price and/or availability without notice.