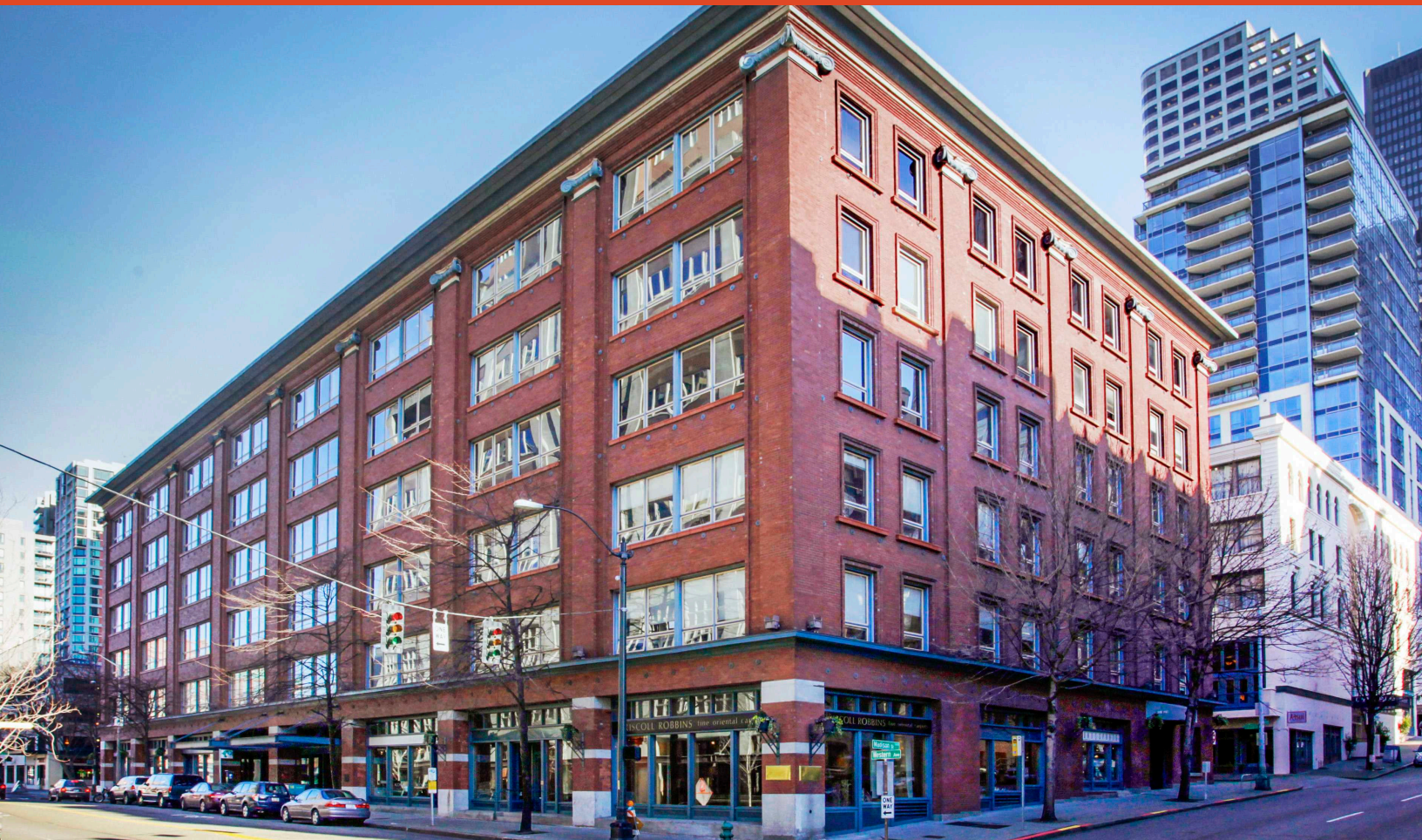




FOR LEASE

National Building

1008 WESTERN AVENUE, SEATTLE, WA



Beautifully renovated classic timber and brick building in downtown Seattle

JEFF HUNTINGTON
206.296.9619
jeff.huntington@kidder.com

JIM LOVSTED, CPM
206.398.2271
jim.lovsted@kidder.com

**Kidder
Mathews**

This information supplied herein is from sources we deem reliable. It is provided without any representation, warranty, or guarantee, expressed or implied as to its accuracy. Prospective Buyer or Tenant should conduct an independent investigation and verification of all matters deemed to be material, including, but not limited to, statements of income and expenses. Consult your attorney, accountant, or other professional advisor.

KIDDER.COM

FOR LEASE

National Building

1008 WESTERN AVENUE, SEATTLE, WA

Features

FLEXIBLE DEMISING OPTIONS on full floors

Half floors, ~11,500 RSF are like full floors

Private bathrooms & elevator lobby exposure

CREATIVE brick & timber space

EASY ACCESS to nearby public transportation

WALKING DISTANCE to the new Seattle Waterfront, ferry terminals, Pike Place Market, CBD and Pioneer Square

ON-SITE storage, secure bike room and building shower

OPERABLE windows

Top Two Floors Suites 500 & 600

CAN BE COMBINED for 45,117 RSF

EITHER CAN BE DEMISED to approx. 6,500

MIX of open space & privates/conference rooms

VIEWS of Elliott Bay

INTERNAL stairwell

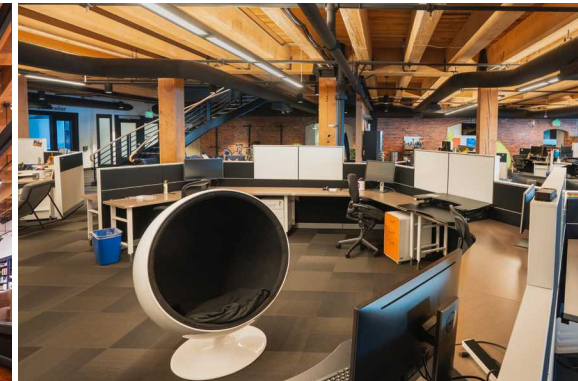
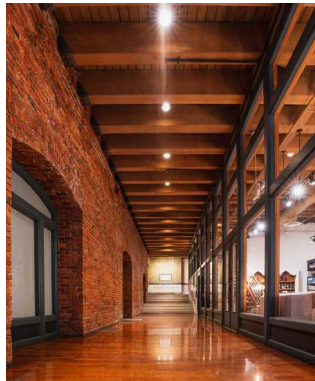
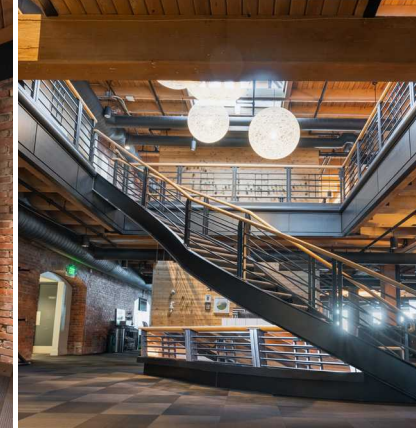
PRIVATE shower

SUITE 500 22,549 RSF

Mostly open plan w/ private shower

SUITE 600 22,568 RSF

Mostly open plan w/ meeting rooms/phone rooms



OTHER AVAILABILITIES

Suite	RSF	Notes
403	±2,582	Open plan with 3 enclosed rooms
410	±2,788	Open plan with one private office, kitchen
301	±8,638	Mix of open & enclosed space, private shower
307	2,138	Open space & 3 enclosed spaces & kitchen
203	±1,930	Corner suite 6 privates, open space
220	±4,941	Mix of open space & privates
1012	±1,084	Office/retail - open space. Frontage on Western
1007	±2,192	Office/retail open plan w/ Madison frontage
1001	±2,706	Retail/restaurant/office, Direct office off building lobby or via post alley

KIDDER.COM



This information supplied herein is from sources we deem reliable. It is provided without any representation, warranty, or guarantee, expressed or implied as to its accuracy. Prospective Buyer or Tenant should conduct an independent investigation and verification of all matters deemed to be material, including, but not limited to, statements of income and expenses. Consult your attorney, accountant, or other professional advisor.

FOR LEASE

National Building

1008 WESTERN AVENUE, SEATTLE, WA

Suite 600

THE ENTIRE FLOOR SUITE IS ±22,568 RSF



JEFF HUNTINGTON
206.296.9619
jeff.huntington@kidder.com

JIM LOVSTED, CPM
206.398.2271
jim.lovsted@kidder.com

KIDDER.COM

This information supplied herein is from sources we deem reliable. It is provided without any representation, warranty, or guarantee, expressed or implied as to its accuracy. Prospective Buyer or Tenant should conduct an independent investigation and verification of all matters deemed to be material, including, but not limited to, statements of income and expenses. Consult your attorney, accountant, or other professional advisor.



FOR LEASE

National Building

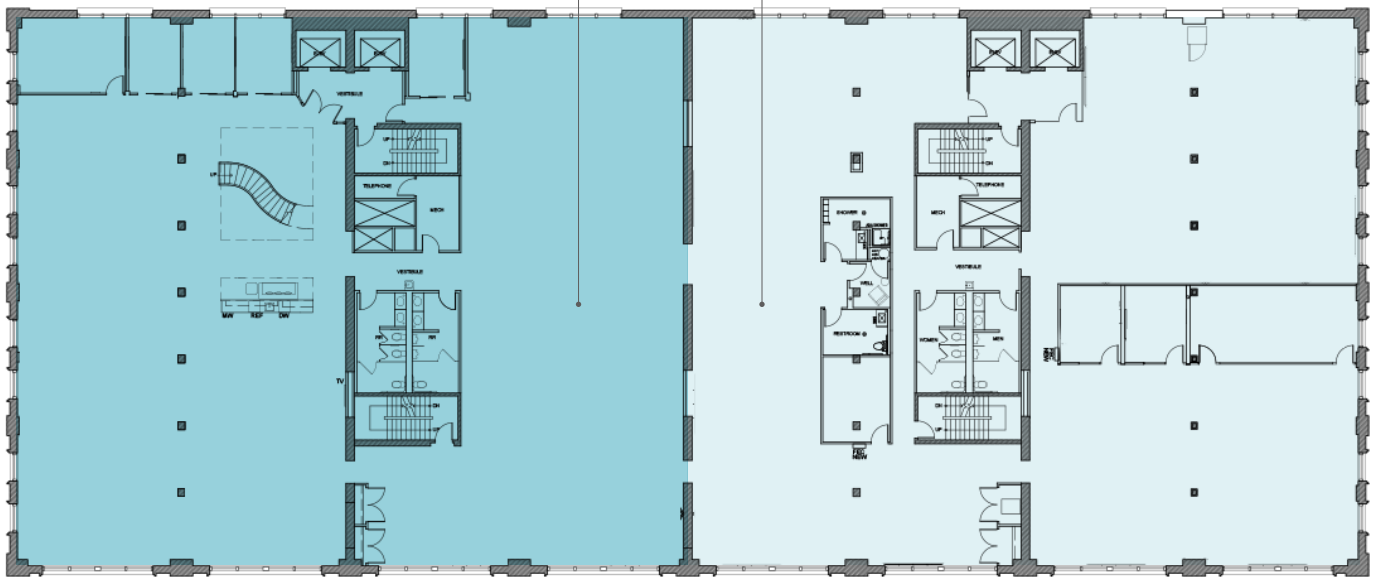
1008 WESTERN AVENUE, SEATTLE, WA

Suite 500

THE ENTIRE FLOOR SUITE IS ±22,549 RSF

NORTH SUITE 500
±11,275 RSF

SOUTH SUITE 500
±11,275 RSF



JEFF HUNTINGTON
206.296.9619
jeff.huntington@kidder.com

JIM LOVSTED, CPM
206.398.2271
jim.lovsted@kidder.com

KIDDER.COM

This information supplied herein is from sources we deem reliable. It is provided without any representation, warranty, or guarantee, expressed or implied as to its accuracy. Prospective Buyer or Tenant should conduct an independent investigation and verification of all matters deemed to be material, including, but not limited to, statements of income and expenses. Consult your attorney, accountant, or other professional advisor.



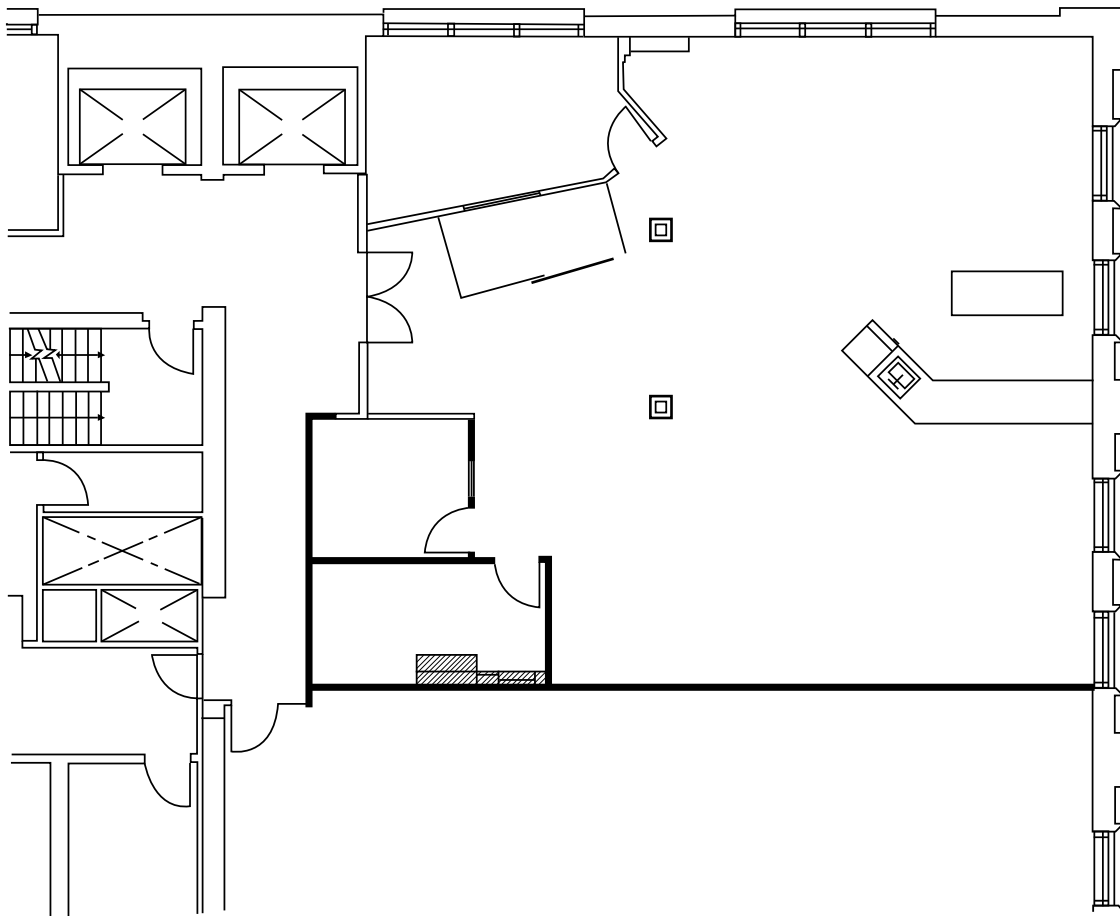
FOR LEASE

National Building

1008 WESTERN AVENUE, SEATTLE, WA

Suite 403

±2,582 RSF | AVAILABLE 2/1/2021



JEFF HUNTINGTON
206.296.9619
jeff.huntington@kidder.com

JIM LOVSTED, CPM
206.398.2271
jim.lovsted@kidder.com

KIDDER.COM

This information supplied herein is from sources we deem reliable. It is provided without any representation, warranty, or guarantee, expressed or implied as to its accuracy. Prospective Buyer or Tenant should conduct an independent investigation and verification of all matters deemed to be material, including, but not limited to, statements of income and expenses. Consult your attorney, accountant, or other professional advisor.



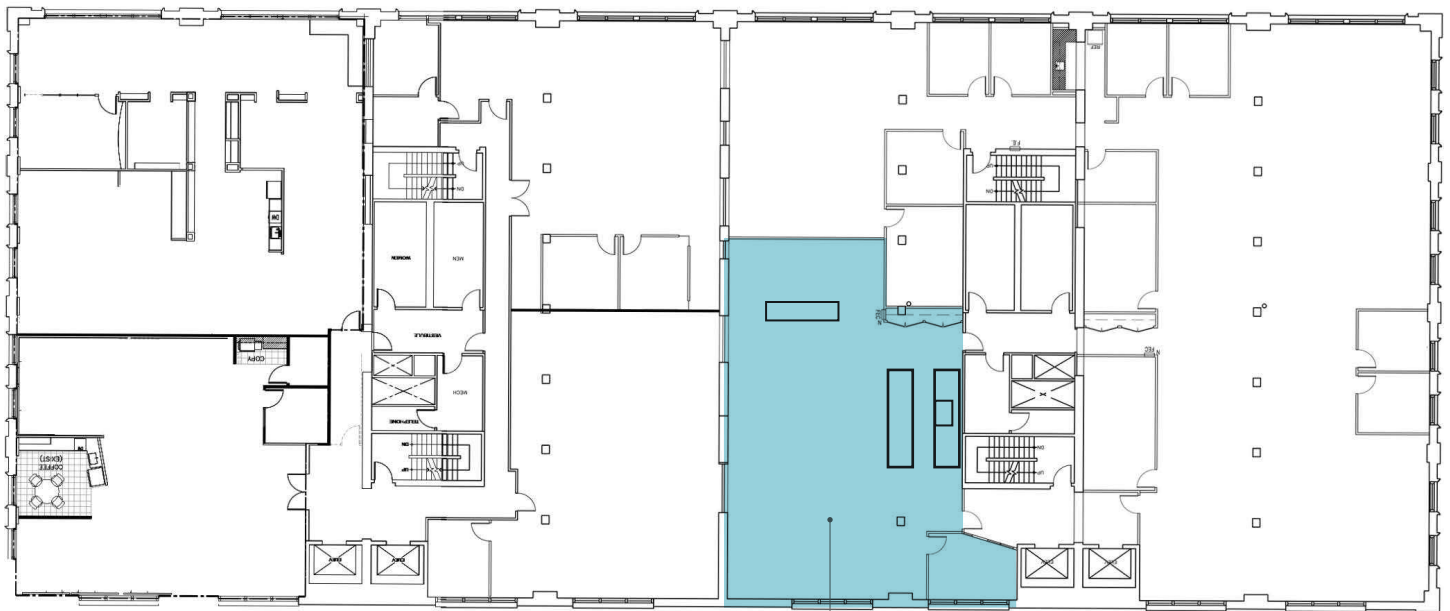
FOR LEASE

National Building

1008 WESTERN AVENUE, SEATTLE, WA

Suite 410

±2,788 RSF



SUITE 410
±2,788 RSF

JEFF HUNTINGTON
206.296.9619
jeff.huntington@kidder.com

JIM LOVSTED, CPM
206.398.2271
jim.lovsted@kidder.com

KIDDER.COM

This information supplied herein is from sources we deem reliable. It is provided without any representation, warranty, or guarantee, expressed or implied as to its accuracy. Prospective Buyer or Tenant should conduct an independent investigation and verification of all matters deemed to be material, including, but not limited to, statements of income and expenses. Consult your attorney, accountant, or other professional advisor.



FOR LEASE

National Building

1008 WESTERN AVENUE, SEATTLE, WA

Suite 301

±8,638 RSF



SUITE 301
±8,638 RSF

JEFF HUNTINGTON
206.296.9619
jeff.huntington@kidder.com

JIM LOVSTED, CPM
206.398.2271
jim.lovsted@kidder.com

KIDDER.COM

This information supplied herein is from sources we deem reliable. It is provided without any representation, warranty, or guarantee, expressed or implied as to its accuracy. Prospective Buyer or Tenant should conduct an independent investigation and verification of all matters deemed to be material, including, but not limited to, statements of income and expenses. Consult your attorney, accountant, or other professional advisor.



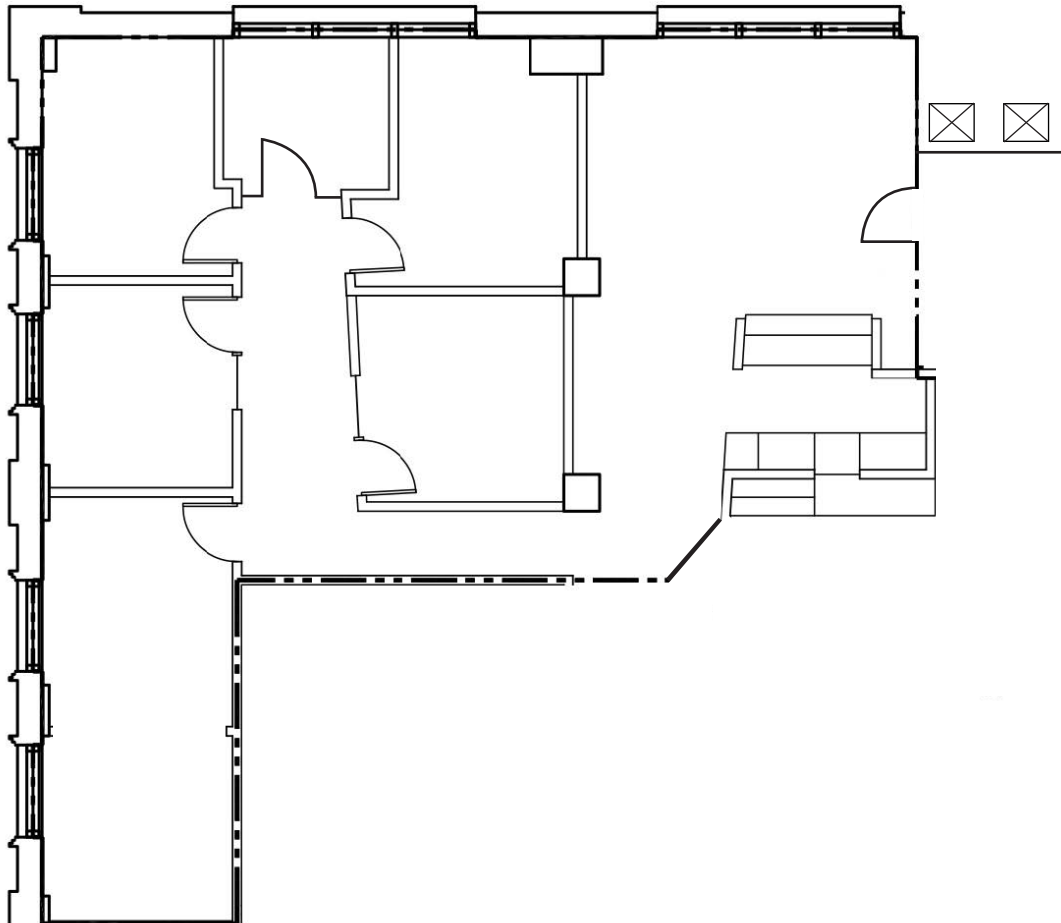
FOR LEASE

National Building

1008 WESTERN AVENUE, SEATTLE, WA

Suite 203

±1,930 RSF



JEFF HUNTINGTON
206.296.9619
jeff.huntington@kidder.com

JIM LOVSTED, CPM
206.398.2271
jim.lovsted@kidder.com

KIDDER.COM

This information supplied herein is from sources we deem reliable. It is provided without any representation, warranty, or guarantee, expressed or implied as to its accuracy. Prospective Buyer or Tenant should conduct an independent investigation and verification of all matters deemed to be material, including, but not limited to, statements of income and expenses. Consult your attorney, accountant, or other professional advisor.



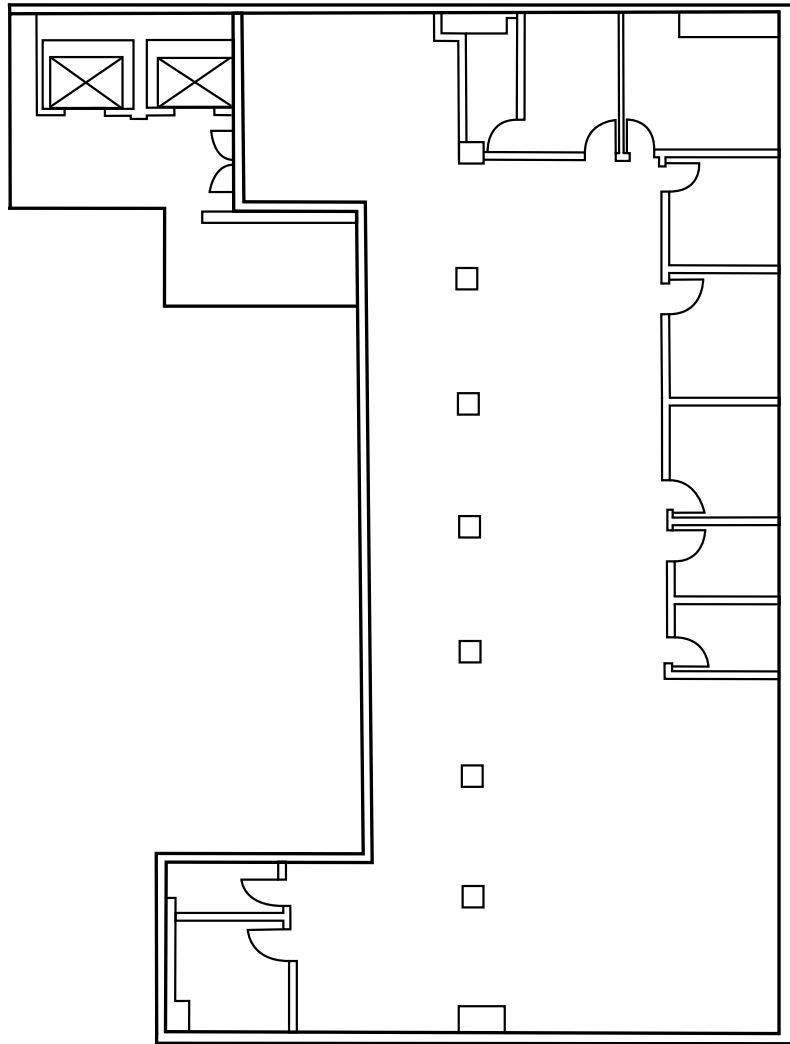
FOR LEASE

National Building

1008 WESTERN AVENUE, SEATTLE, WA

Suite 220

±4,941 RSF



JEFF HUNTINGTON

206.296.9619

jeff.huntington@kidder.com

JIM LOVSTED, CPM

206.398.2271

jim.lovsted@kidder.com

KIDDER.COM

This information supplied herein is from sources we deem reliable. It is provided without any representation, warranty, or guarantee, expressed or implied as to its accuracy. Prospective Buyer or Tenant should conduct an independent investigation and verification of all matters deemed to be material, including, but not limited to, statements of income and expenses. Consult your attorney, accountant, or other professional advisor.

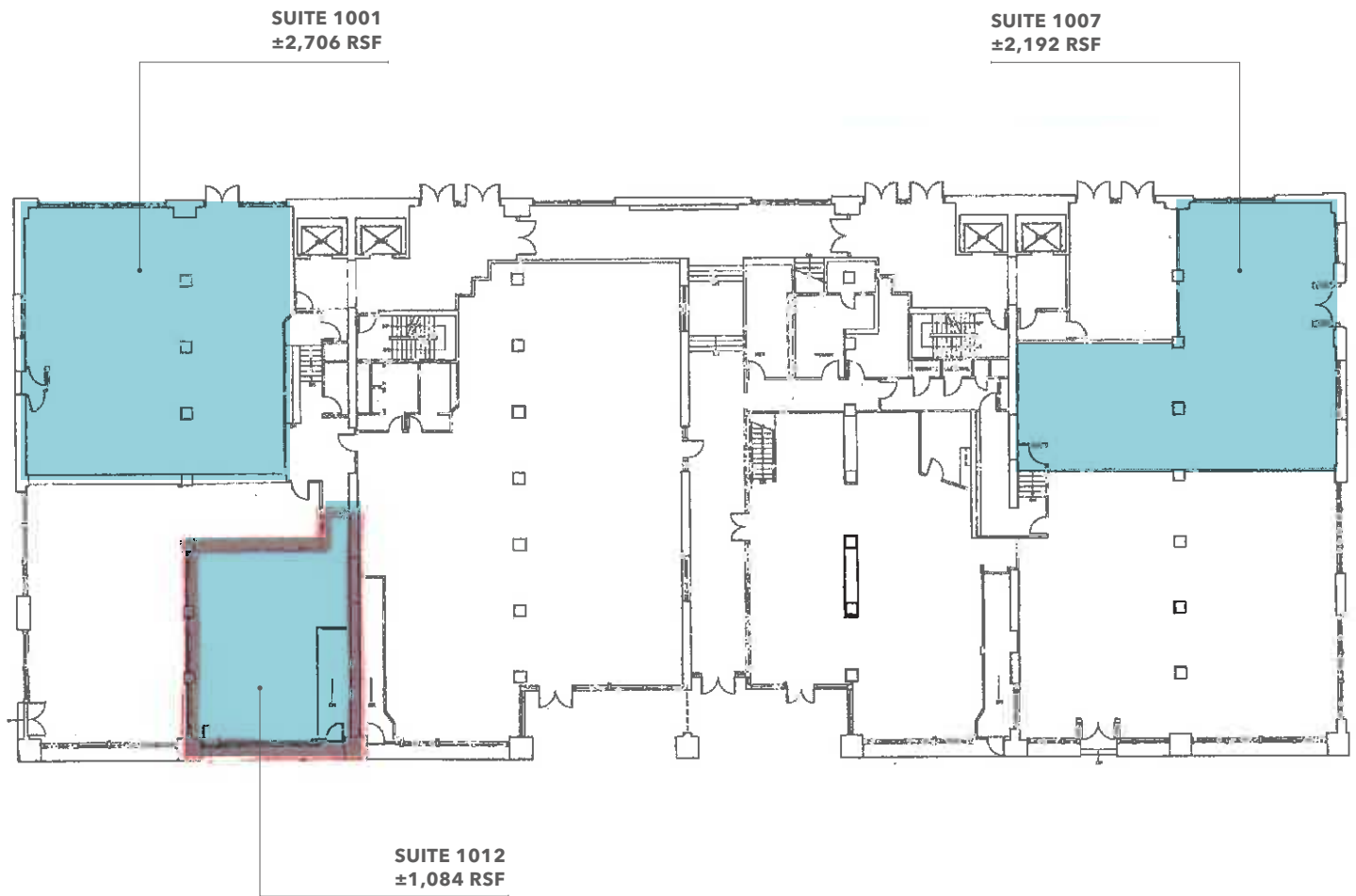
km Kidder
Mathews

FOR LEASE

National Building

1008 WESTERN AVENUE, SEATTLE, WA

Suite 1001, 1007, & 1012



JEFF HUNTINGTON
206.296.9619
jeff.huntington@kidder.com

JIM LOVSTED, CPM
206.398.2271
jim.lovsted@kidder.com

KIDDER.COM

This information supplied herein is from sources we deem reliable. It is provided without any representation, warranty, or guarantee, expressed or implied as to its accuracy. Prospective Buyer or Tenant should conduct an independent investigation and verification of all matters deemed to be material, including, but not limited to, statements of income and expenses. Consult your attorney, accountant, or other professional advisor.

