

DASH POINT VILLAGE

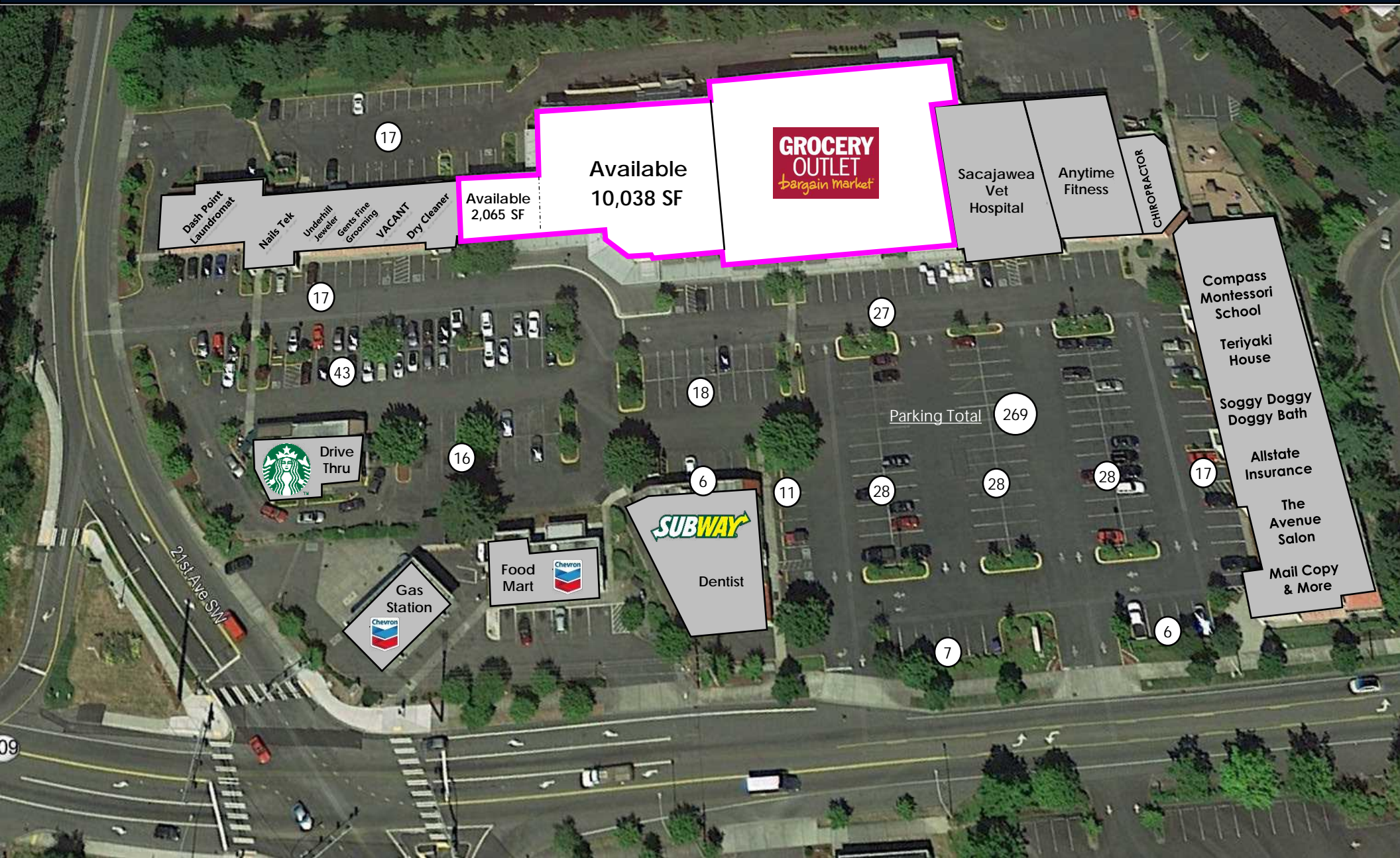
1618 SW DASH POINT ROAD | FEDERAL WAY, WA 98023

RETAIL
Available
10,038 – 12,103 sf

**GROCERY
OUTLET**
bargain Market

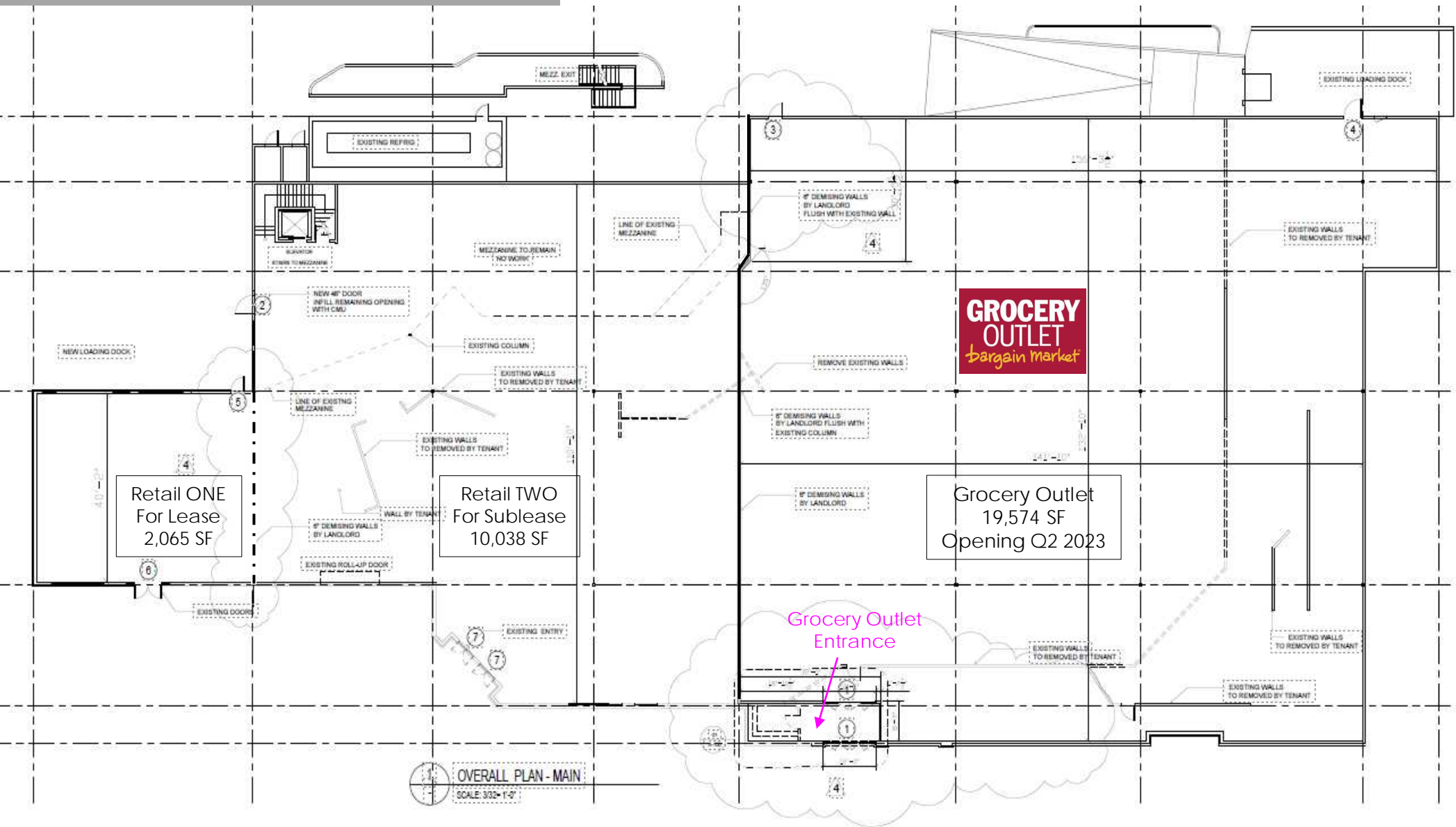
DASH POINT VILLAGE

1618 SW DASH POINT ROAD | FEDERAL WAY, WA 98023



DASH POINT VILLAGE

1618 SW DASH POINT ROAD | FEDERAL WAY, WA 98023



Overall Plan

* Retail ONE & TWO can be combined

DASH POINT VILLAGE

1618 SW DASH POINT ROAD | FEDERAL WAY, WA 98023



Neighborhood Facts

Located in the gold coast of Federal Way, the Dash Point Adelaide, Buenna, Dash Point neighborhoods will now be served by a brand-new Grocery Outlet.

Dash Point Shopping Center is located West of Hwy 99 at 320th halfway between Seattle and Tacoma, among the western views of Puget Sound rooftops. The City of Federal Way has committed to assisting the new Tenant's with special incentives which will be discussed on a case-by- case basis.

Major employers include Federal Way Schools, St. Francis Hospital, GSA, Boeing & Xerox.

Leasing Details

RETAIL ONE & TWO

NNN (estimated)	\$5.25 sf
Tenant Allowance	Negotiable
Retail Parking	269

RETAIL ONE

Delivery Date	Now 2022
Retail	2,065 sf
Small Shop	\$16.00 - \$18.00 psf

RETAIL TWO

Delivery Date	Q2 2023
Retail	10,038 - 12,103 sf
Jr. Anchor	\$12.00 - \$14.00 psf

This information supplied herein is from sources we deem reliable. It is provided without any representations, warranty or guarantee, expressed or implied as to its accuracy. Prospective recipient should conduct an independent investigation and verification of all matters deemed to be material. August 25, 2022.