



HOGE BUILDING
■ HISTORIC SEATTLE ■

701 2nd Ave
Seattle, WA 98101

HOGE BUILDING

■ HISTORIC SEATTLE ■

15M

ANNUAL PIKE PLACE
MARKET VISITORS

41M

ANNUAL TOURISTS
TO SEATTLE

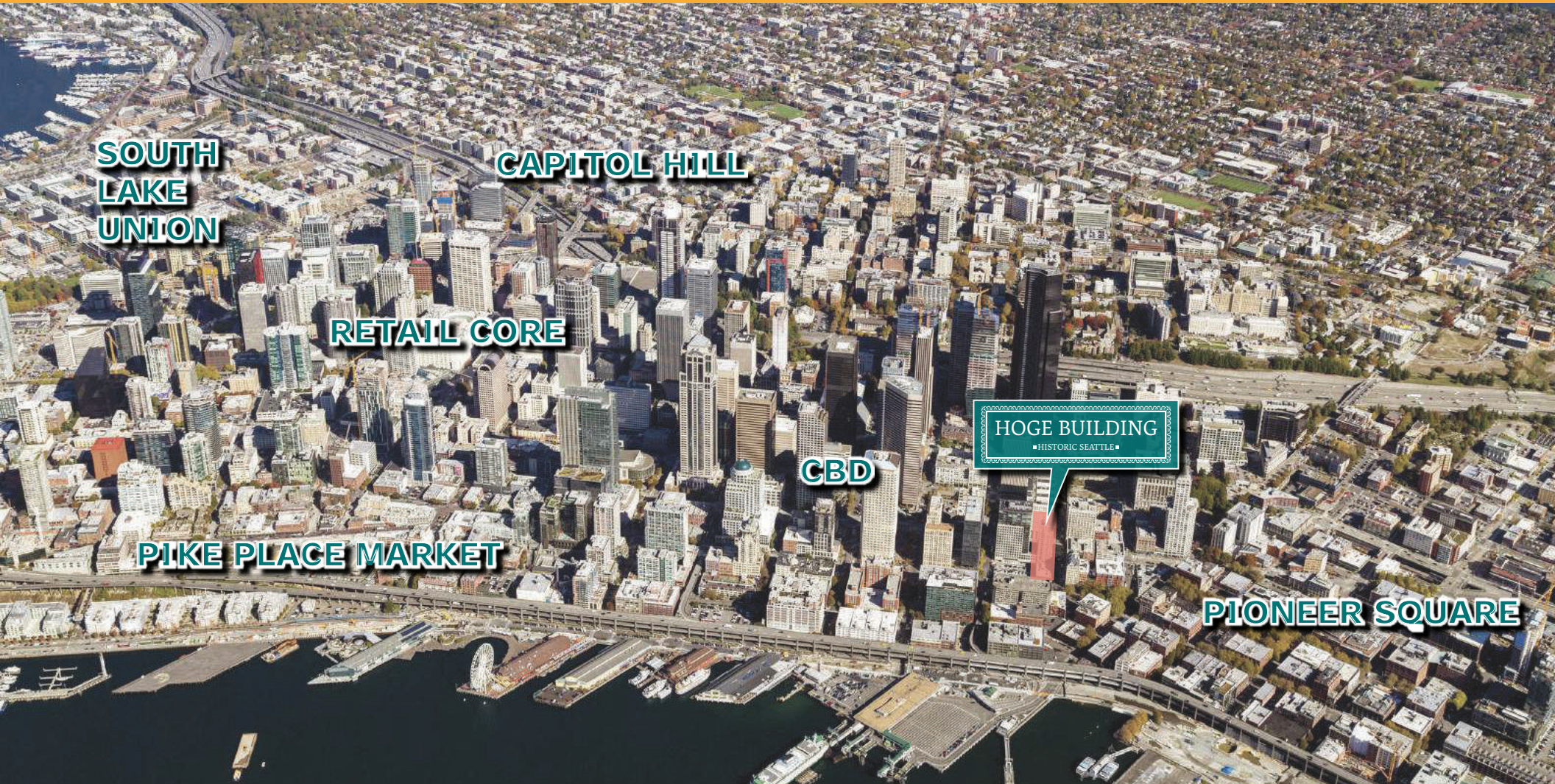
\$1.6B

ANNUAL BRICK
AND MORTAR SALES

800K

PROJECTED CONVENTION
CENTER ATTENDEES
(Upon Project Completion)





**SOUTH
LAKE
UNION**

CAPITOL HILL

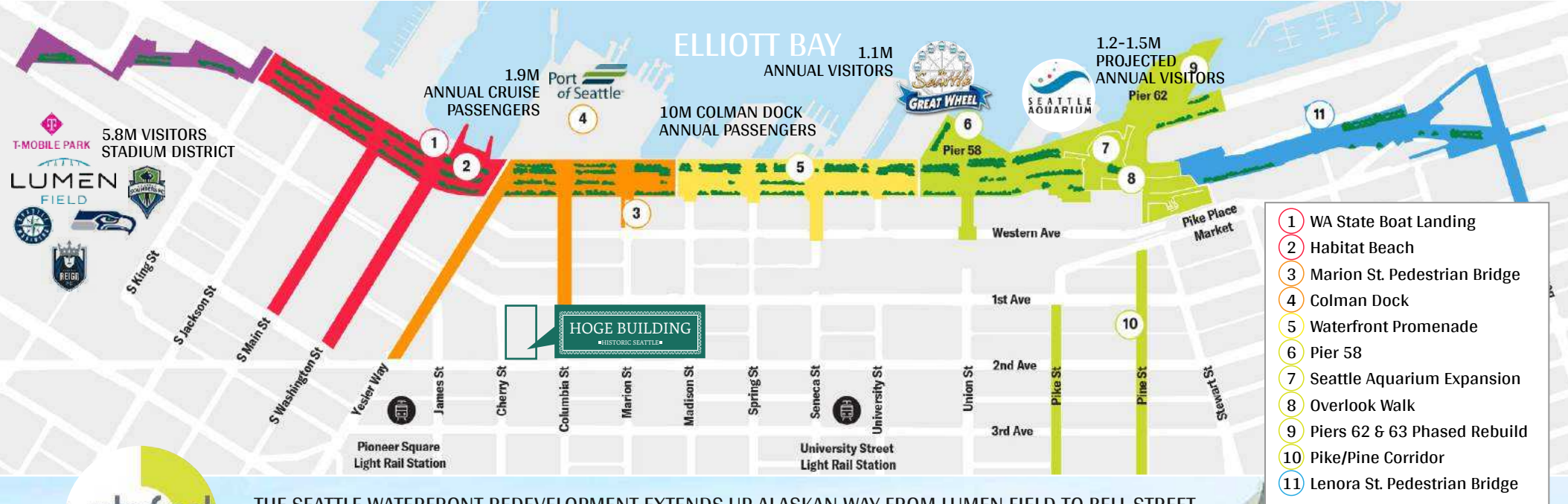
RETAIL CORE

CBD

HOGE BUILDING
▪ HISTORIC SEATTLE ▪

PIKE PLACE MARKET

PIONEER SQUARE



THE SEATTLE WATERFRONT REDEVELOPMENT EXTENDS UP ALASKAN WAY FROM LUMEN FIELD TO BELL STREET, WITH SIGNIFICANT IMPROVEMENTS MADE TO CREATE CONNECTIONS BETWEEN NEW AND OLD PARK SPACES, RESTAURANTS, SHOPS AND NEIGHBORHOODS WITH RAISED STREET CROSSINGS AND WIDENED SIDEWALKS FOR PEDESTRIANS. THE WATERFRONT PROJECT STARTED CONSTRUCTION IN 2020 AND IS EXPECTED TO DELIVER THE FINAL PHASES IN 2025.



\$1.07B
REDEVELOPMENT PROJECT

\$400M
ANNUAL BUSINESS REVENUE

8-12M
PROJECTED ANNUAL VISITORS



The Hoge Building represents Seattle's transition from frontier town to a metropolitan urban center. In the race to build Seattle's tallest tower during Seattle's rapid growth as the western Boom Town, the Hoge Building took less than a year to complete and was among the first high-rises in the-then emerging financial district. It was originally built as the headquarters for Union Savings & Trust Bank in 1911 and is now comprised primarily of prestigious law firms. The Hoge Building is a distinctive and beautiful stone building aesthetically ornate, at the gateway to the emerging waterfront district at Second Avenue and Cherry Street. The building offers stunning interior and extravagant high ceilings with marble details and decorative cornices.





PROJECT DETAILS

The Hoge Building is a beautiful historic building located in the heart of Seattle's Central Business District at 2nd & Cherry.

ADDRESS

701 2nd Ave
Seattle, WA 98101

RETAIL SPACE

SUITE 1016,925 SF
Street Level (Former Bank)

SUITE 100 1,804 SF
Lower Level (Former Cocoa Cabana)

SUITE 102.....4,467 SF
Lower Level (Former Bakeman's)

Spaces can be combined 13,196 SF

RATE Call For Rates

AVAILABILITY..... Immediate

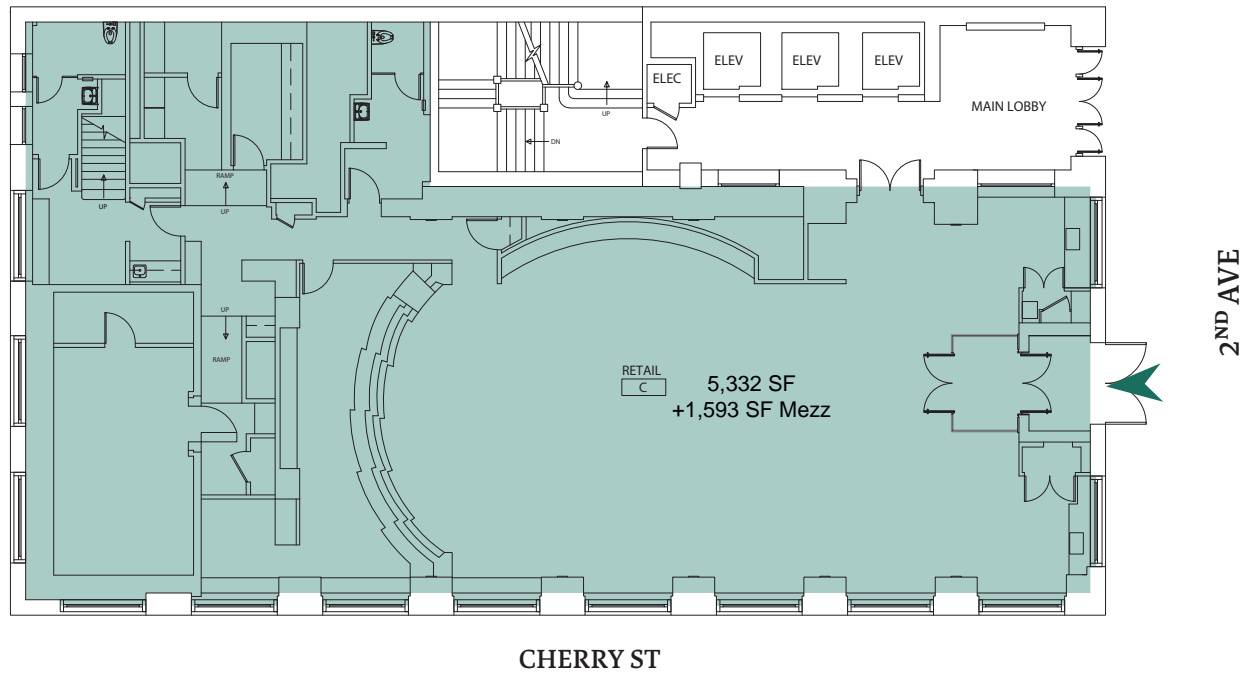
Maria Royer
206.619.0131 Cell
mroyer@real-retail.net

Katie Parsons Waters
425.736.5262 Cell
katie@real-retail.net

206.464.0600 Office
info@real-retail.net

This information supplied herein has been secured from sources believed to be reliable; however, no representations are made to its accuracy. Prospective tenants or buyers should consult their professional advisors and conduct their own independent investigation. Properties are subject to change in price and/or availability without notice.

STREET LEVEL



LOWER LEVEL

