

LEASE

1117 BROADWAY PLAZA

1117 Broadway Plaza Tacoma, WA 98402



OFFERING SUMMARY

Lease Rate:	\$14.00 SF/yr
Lease Type:	Triple Net (NNN) \$6
Available SF:	3,200 SF
Suite:	501
Building Size:	33,662 SF
Lot Size:	0.23 Acres
Year Built:	1922

PROPERTY OVERVIEW

Professional office suites available for lease in the heart of Downtown Tacoma. Suite 501 is 3,200 SF and features open work areas, private offices and a kitchenette with exposed brick and high ceilings. Property located near the Tacoma Financial Center and Hotel Murano with easy access to the freeways (SR 16, I-705, I-5). Building located near the Tacoma Link light rail that is expanding through the Stadium District and Hilltop. Monthly parking garage available on Commerce Street.

PROPERTY HIGHLIGHTS

- Suite 501 is 3,200 SF
- In Tacoma's Financial District
- Easy freeway access (SR 16, I-705 and I-5)
- Near Tacoma link light rail
- Great central location between Seattle and Portland

Dominic Temmel
253 273 6474
dtemmel@cbcworldwide.com

Bob Fredrickson, CCIM
206 595 7232
bfredrickson@cbcworldwide.com

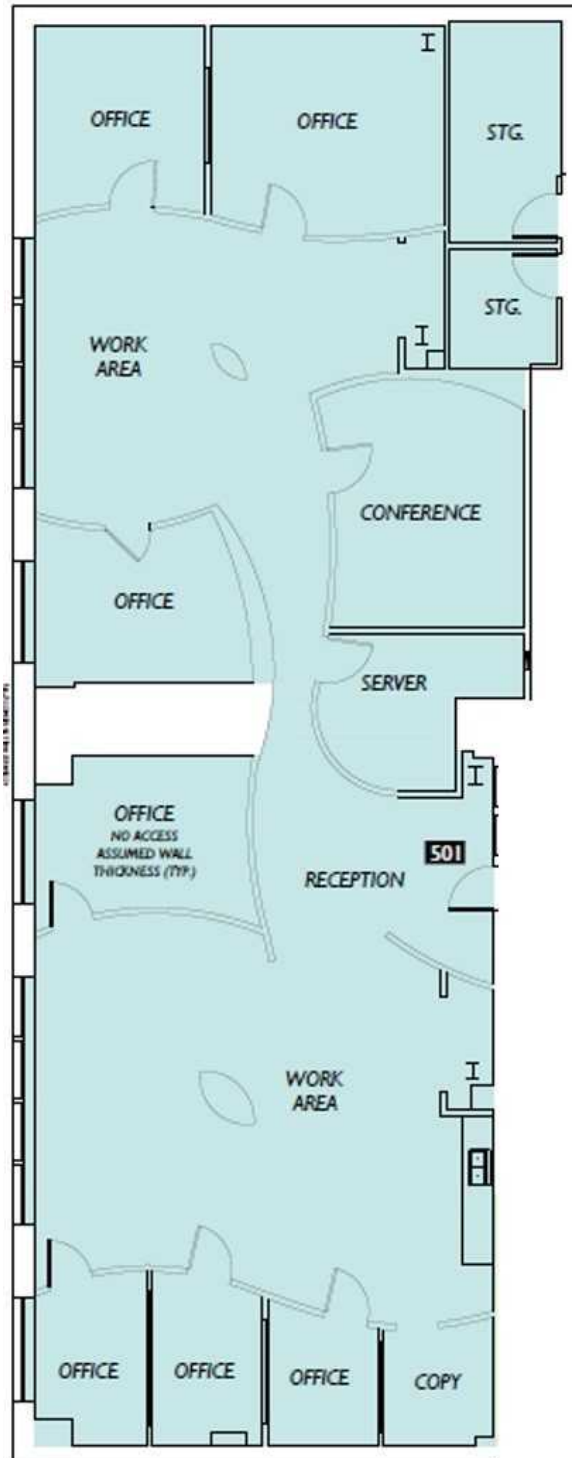


**COLDWELL BANKER
COMMERCIAL
DANFORTH**

LEASE

1117 BROADWAY PLAZA

1117 Broadway Plaza Tacoma, WA 98402



Dominic Temmel
253 273 6474
dtemmel@cbcworldwide.com

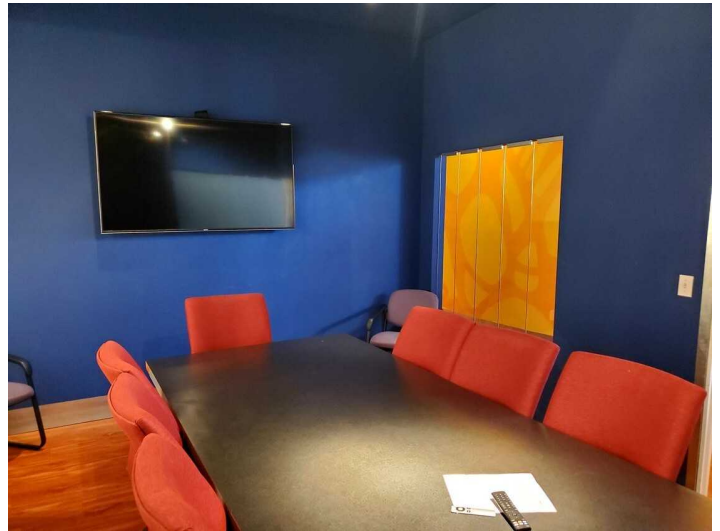
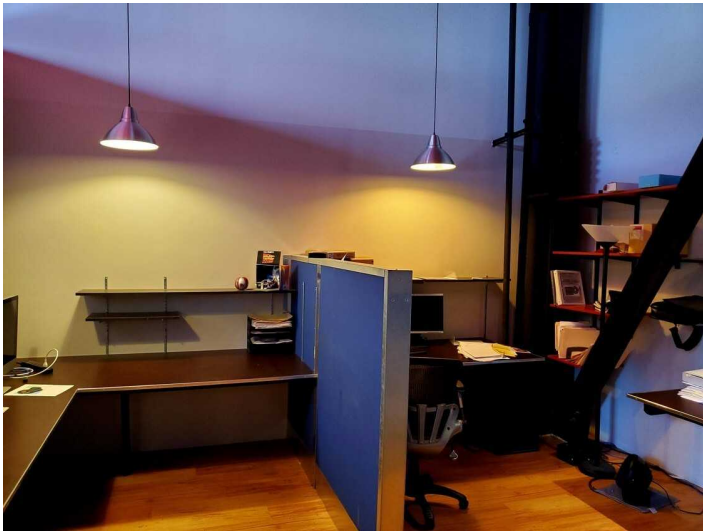
Bob Fredrickson, CCIM
206 595 7232
bfredrickson@cbcworldwide.com



**COLDWELL BANKER
COMMERCIAL
DANFORTH**

LEASE

1117 BROADWAY PLAZA
1117 Broadway Plaza Tacoma, WA 98402



Dominic Temmel
253 273 6474
dtemmel@cbcworldwide.com

Bob Fredrickson, CCIM
206 595 7232
bfredrickson@cbcworldwide.com



**COLDWELL BANKER
COMMERCIAL
DANFORTH**

LEASE

1117 BROADWAY PLAZA

1117 Broadway Plaza Tacoma, WA 98402



Dominic Temmel
253 273 6474
dtemmel@cbcworldwide.com

Bob Fredrickson, CCIM
206 595 7232
bfredrickson@cbcworldwide.com



**COLDWELL BANKER
COMMERCIAL
DANFORTH**