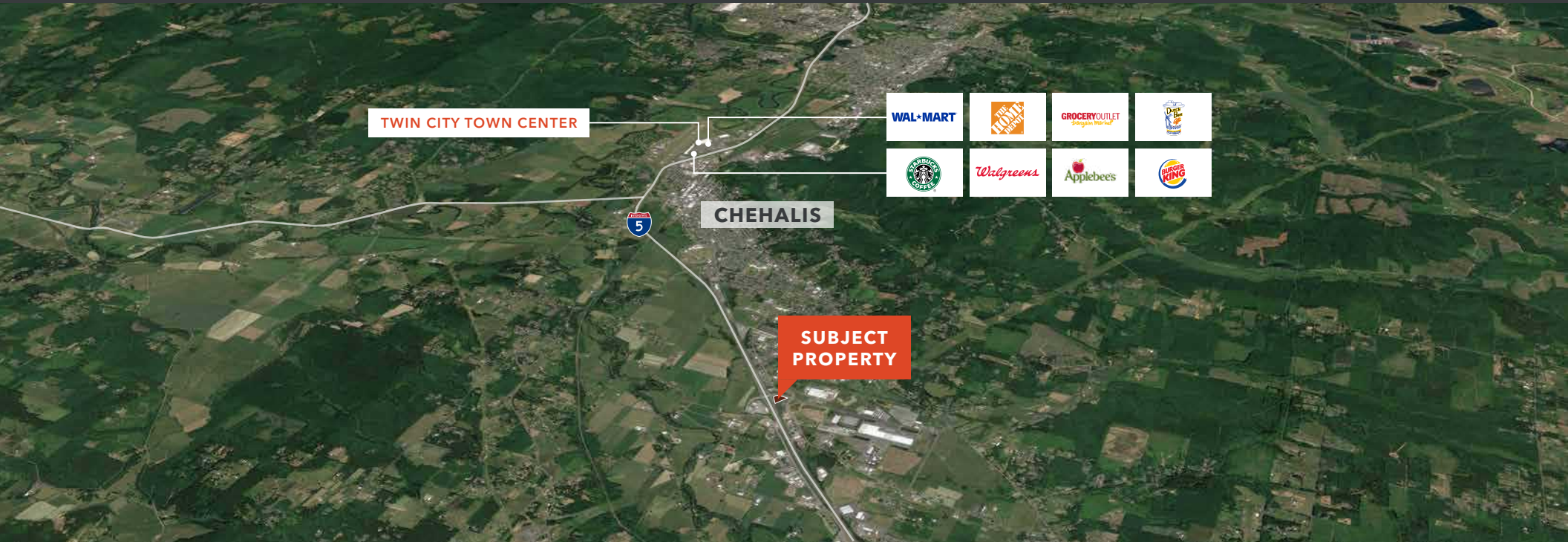




AVAILABLE

# Bishop/Labree Road Interchange

1630 BISHOP ROAD | CHEHALIS, WA



## Retail pad sites along I-5 in Chehalis, WA

**RYAN HADDOCK**  
 360.596.9151  
 ryan.haddock@kidder.com

**Kidder  
 Mathews**

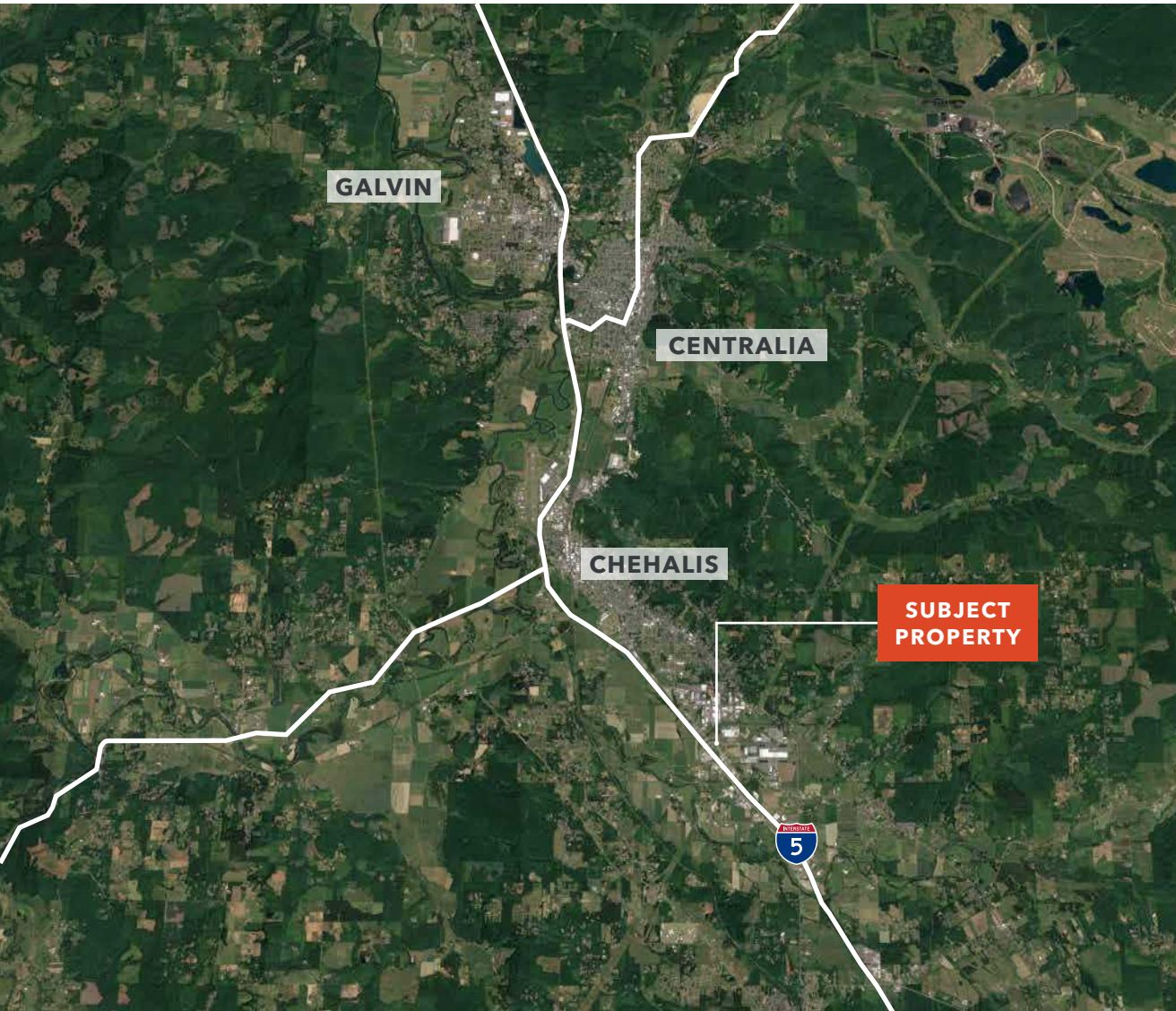
This information supplied herein is from sources we deem reliable. It is provided without any representation, warranty, or guarantee, expressed or implied as to its accuracy. Prospective Buyer or Tenant should conduct an independent investigation and verification of all matters deemed to be material, including, but not limited to, statements of income and expenses. Consult your attorney, accountant, or other professional advisor.

**KIDDER.COM**

AVAILABLE

# Bishop/Labree Road Interchange

1630 BISHOP ROAD | CHEHALIS, WA



## Owner will consider Build to Suit and Ground Lease Options

**GENERAL** Commercial zoning

**PARCELS** 017731000000, 017731001000, 017727001000

**OVER** 100,000 vehicles a day along I-5

**POTENTIAL** for 3 retail pads

### DEMOGRAPHICS

2022	1 Mile	3 Miles	5 Miles
Population	18,998	57,820	80,064
Median HH Income	\$79,831	\$75,662	\$77,069
Employment	11,195	22,965	25,857

**RYAN HADDOCK**  
360.596.9151  
[ryan.haddock@kidder.com](mailto:ryan.haddock@kidder.com)

KIDDER.COM

This information supplied herein is from sources we deem reliable. It is provided without any representation, warranty, or guarantee, expressed or implied as to its accuracy. Prospective Buyer or Tenant should conduct an independent investigation and verification of all matters deemed to be material, including, but not limited to, statements of income and expenses. Consult your attorney, accountant, or other professional advisor.

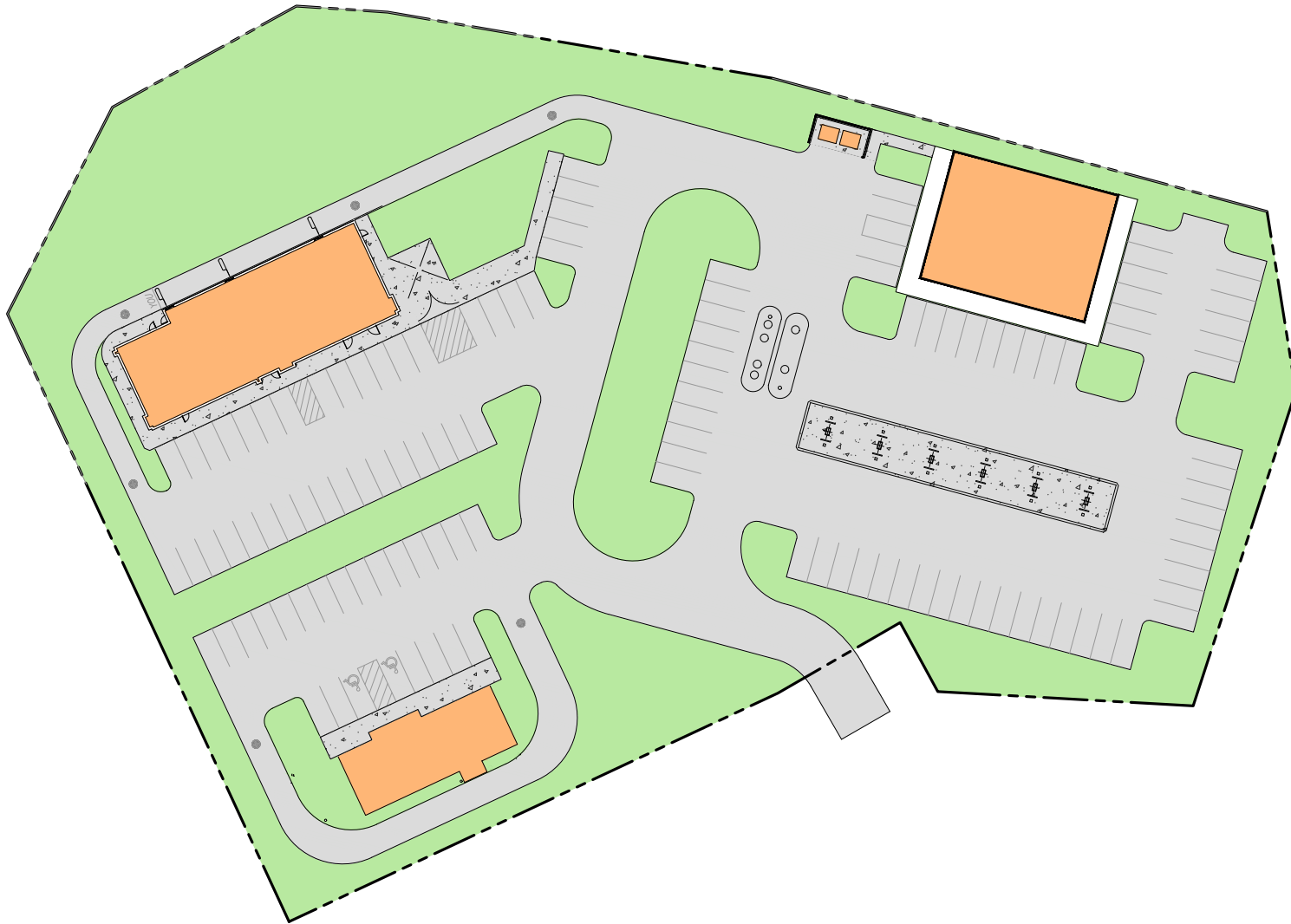


**FOR SALE**

# Bishop/Labree Road Interchange

1630 BISHOP ROAD | CHEHALIS, WA

## Site Plan



[KIDDER.COM](http://KIDDER.COM)

This information supplied herein is from sources we deem reliable. It is provided without any representation, warranty, or guarantee, expressed or implied as to its accuracy. Prospective Buyer or Tenant should conduct an independent investigation and verification of all matters deemed to be material, including, but not limited to, statements of income and expenses. Consult your attorney, accountant, or other professional advisor.

**km** Kidder  
Mathews