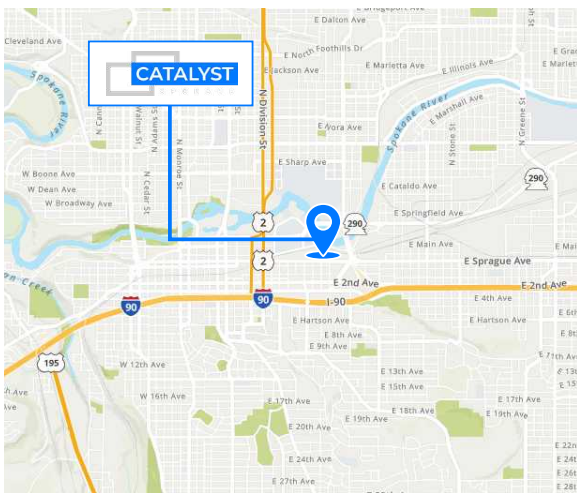


Retail For Lease

Spaces available at Catalyst and Morris Center



Property highlights

- Cross-Laminated timber design
- Low waterflow plumbing fixtures
- Shower rooms to encourage bike commuting
- Energy efficient smart building

Retail spaces available

Catalyst | 601 E Riverside Avenue, Spokane, WA

- ±917 SF first floor retail space
- Optional lobby and outdoor seating

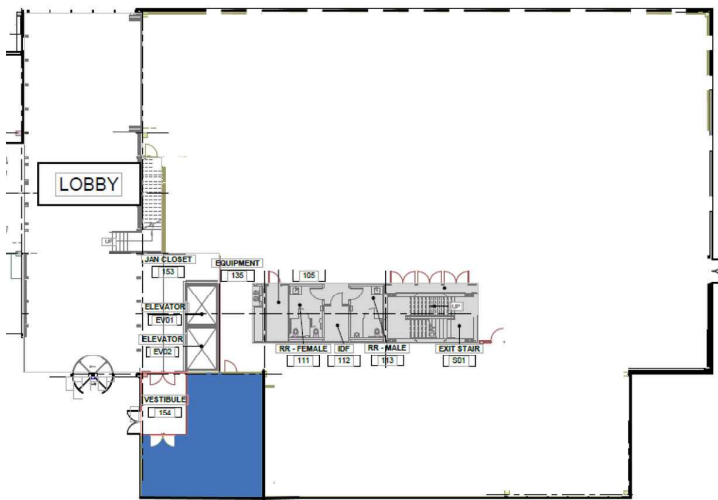
Morris Center | 12 N Sheridan Street, Spokane, WA

- ±3,353 SF first floor retail space
- Parking lot adjacent to space



Catalyst | 917 SF

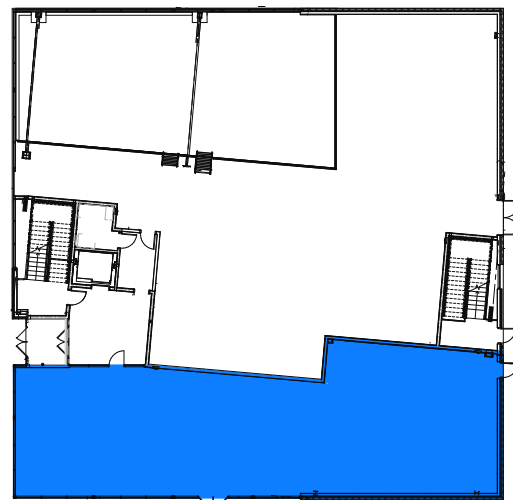
First floor retail with optional lobby and outdoor seating



Available space

Morris Center | 3,353 SF

First floor retail with adjacent parking lot



Available space

FOR LEASING INFORMATION:

MICHAEL SHARAPATA

+1 509 822 0088

michael.sharapata@am.jll.com

RE License #26565

CHRIS BELL

+1 509 622 3538

cbell@naiblack.com

RE License #17737