

# Immediately Available For Lease or Sale GREENLAKE RETAIL/OFFICE/MULTIFAMILY

7301 Aurora Avenue N, Seattle, WA 98103



## AVAILABLE FOR LEASE

RETAIL/OFFICE: 2,060 SF  
LEASE RATE: \$22.00/SF/Yr NNN

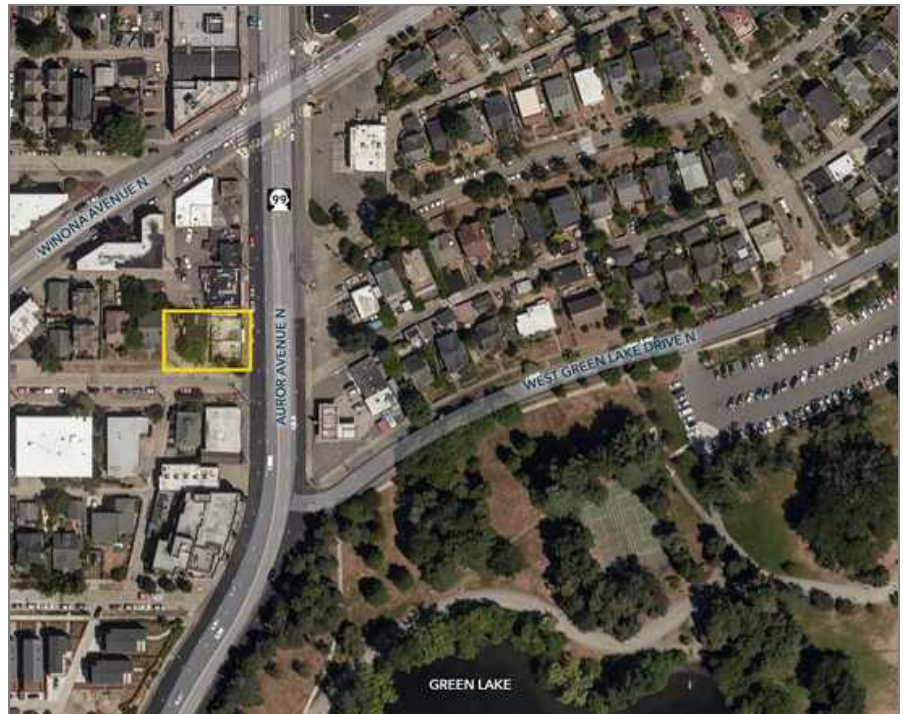
## AVAILABLE FOR SALE

SALE PRICE: \$1,950,000  
IMPROVEMENTS: Triplex - 2,550 SF  
Retail Space - 2,060 SF  
PARCEL SIZE: 4,930 SF of Land  
ZONING: NC3P-55

## COMMENTS

The property is ideally located on the NW corner of Greenlake (corner of Aurora Ave. N & N 73rd St.). The 4,930 SF parcel contains a recently vacated Restaurant / Bar and a fully occupied Triplex.

The highest and best use of the Property is a redevelopment of this parcel along with the neighboring three other parcels for a total of 20,210 SF of NC3P-55 land.



## CONTACT

**Chris Aberg**

caberg@lee-associates.com  
D 206.773.2683

**Jim Bowles, SIOR**

jbowles@lee-associates.com  
D 206.773.2673

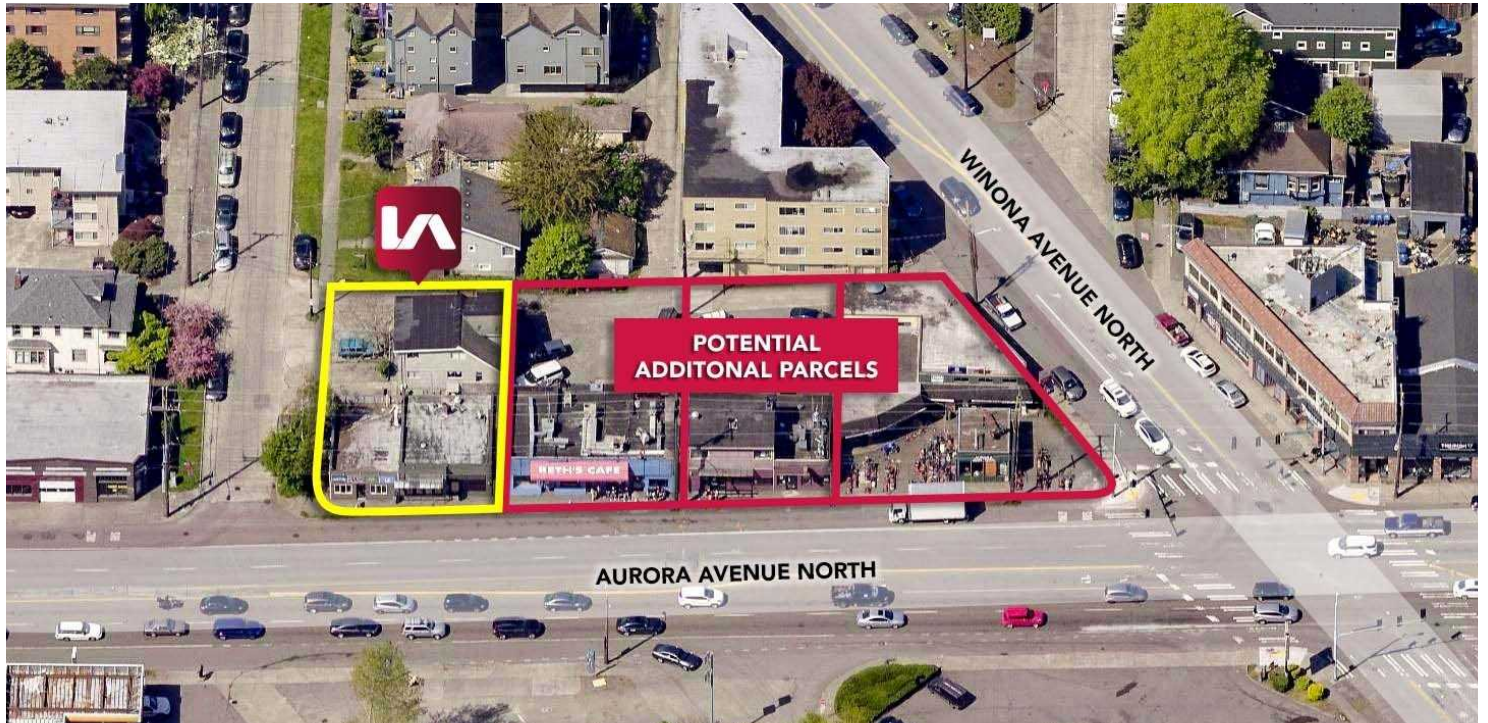
**Amanda Hahnemann, CCIM**

ahahnemann@lee-associates.com  
D 206.773.2691

We obtained the information above from sources we believe to be reliable. However, we have not verified its accuracy and make no guarantee, warranty or representation about it. It is submitted subject to the possibility of errors, omissions, change of price, rental or other conditions, prior sale, lease or financing, or withdrawal without notice. We include projections, opinions, assumptions or estimates for example only, and they may not represent current or future performance of the property. You and your tax and legal advisors should conduct your own investigation of the property and transaction.

# Immediately Available For Lease or Sale GREENLAKE RETAIL/OFFICE/MULTIFAMILY

7301 Aurora Avenue N, Seattle, WA 98103



## POTENTIAL ADDITIONAL PARCELS

- Further 15,280 SF of Land Available in Neighboring Parcels
- Total SF of the Subject Plus the Additional 3 Other Parcels is 20,210 SF
- Together the 4 Parcels Allow for Redevelopment, the Property's Highest and Best Use

### CONTACT

#### Chris Aberg

caberg@lee-associates.com  
D 206.773.2683

#### Jim Bowles, SIOR

jbowles@lee-associates.com  
D 206.773.2673

#### Amanda Hahnemann, CCIM

ahahnemann@lee-associates.com  
D 206.773.2691

We obtained the information above from sources we believe to be reliable. However, we have not verified its accuracy and make no guarantee, warranty or representation about it. It is submitted subject to the possibility of errors, omissions, change of price, rental or other conditions, prior sale, lease or financing, or withdrawal without notice. We include projections, opinions, assumptions or estimates for example only, and they may not represent current or future performance of the property. You and your tax and legal advisors should conduct your own investigation of the property and transaction.

# Immediately Available For Lease or Sale GREENLAKE RETAIL/OFFICE/MULTIFAMILY

7301 Aurora Avenue N, Seattle, WA 98103



EAST ELVEATION STUDY - OPTION 2

## HIGHEST & BEST USE: REDEVELOPMENT

### Possible Redevelopment Scenario

Lower level parking, plus five stories above with a potential of:

- Residential Area: 48,737 SF
- Retail Area: 9,522 SF
- Total Number of Units: 79

## CONTACT

### Chris Aberg

caberg@lee-associates.com  
D 206.773.2683

### Jim Bowles, SIOR

jbowles@lee-associates.com  
D 206.773.2673

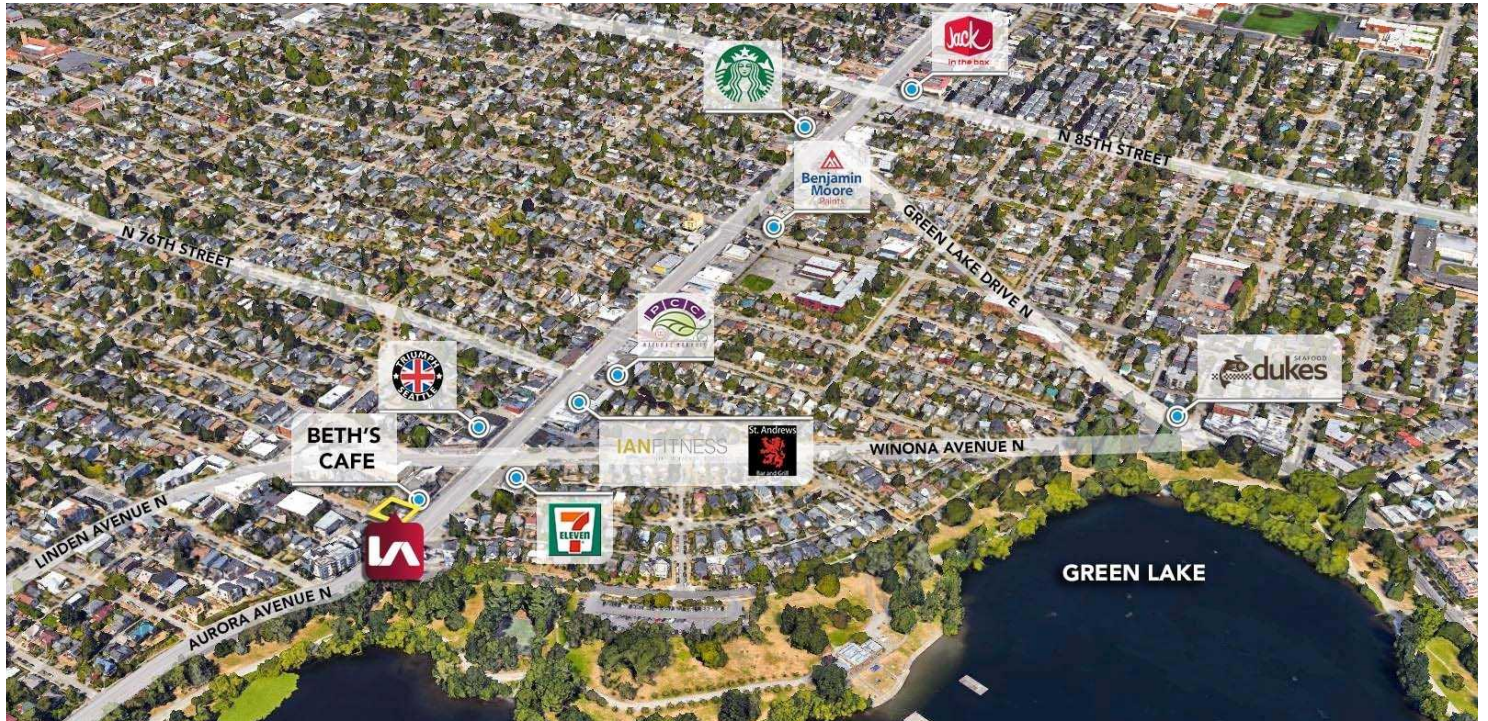
### Amanda Hahnemann, CCIM

ahahnemann@lee-associates.com  
D 206.773.2691

We obtained the information above from sources we believe to be reliable. However, we have not verified its accuracy and make no guarantee, warranty or representation about it. It is submitted subject to the possibility of errors, omissions, change of price, rental or other conditions, prior sale, lease or financing, or withdrawal without notice. We include projections, opinions, assumptions or estimates for example only, and they may not represent current or future performance of the property. You and your tax and legal advisors should conduct your own investigation of the property and transaction.

# Immediately Available For Lease or Sale GREENLAKE RETAIL/OFFICE/MULTIFAMILY

7301 Aurora Avenue N, Seattle, WA 98103



## POPULATION

	1 MILE	2 MILES	3 MILES
2020	29,743	270,774	505,324
2025 (Projection)	31,477	289,789	543,764

## HOUSEHOLDS

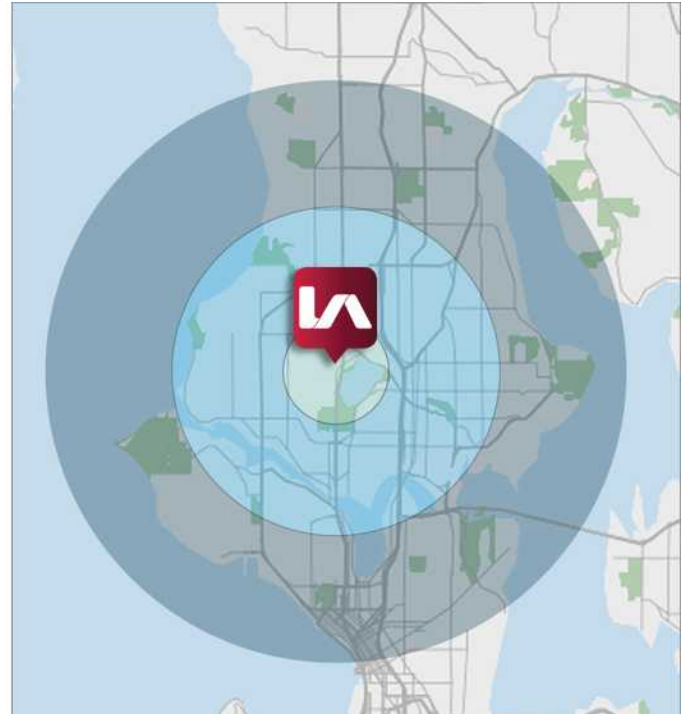
	1 MILE	2 MILES	3 MILES
2020	13,457	119,237	238,566

## MEDIAN HOUSEHOLD INCOME

	1 MILE	2 MILES	3 MILES
2020	\$115,038	\$94,622	\$98,771

## TRAFFIC COUNTS

	STREET / CROSS STREET	VOLUME	DISTANCE
	Aurora Avenue N / N 77th Street	39,075	0.05 miles
	Aurora Avenue N / N 80th Street	39,075	0.17 miles



## CONTACT

**Chris Aberg**

caberg@lee-associates.com  
D 206.773.2683

**Jim Bowles, SIOR**

jbowles@lee-associates.com  
D 206.773.2673

**Amanda Hahnemann, CCIM**

ahahnemann@lee-associates.com  
D 206.773.2691

We obtained the information above from sources we believe to be reliable. However, we have not verified its accuracy and make no guarantee, warranty or representation about it. It is submitted subject to the possibility of errors, omissions, change of price, rental or other conditions, prior sale, lease or financing, or withdrawal without notice. We include projections, opinions, assumptions or estimates for example only, and they may not represent current or future performance of the property. You and your tax and legal advisors should conduct your own investigation of the property and transaction.