

# DOWNTOWN BELLEVUE RETAIL

## SURREY ON MAIN

10777 Main Street, Bellevue, WA 98004



For more information please contact:

LAURA MILLER

[laura@gibraltarusa.com](mailto:laura@gibraltarusa.com)

206.351.3573



10777 MAIN STREET, BELLEVUE, WA 98004

# SURREY ON MAIN



## HIGHLIGHTS

- PRIME corner retail opportunity in Bellevue's coveted Main Street district
- Located at the base of Surrey on Main, a brand-new modern apartment community comprised of 125 units
- Retail features soaring 18-foot ceilings, floor to ceiling storefront windows expanding two sides, and abundant natural light
- Ideal for bakery, wine bar, café, boutique retail
- 1,644 SF
- Within walking distance to future East Main Light Rail Station scheduled to open in 2023
- 6 retail parking stalls plus 4 visitor stalls in Building garage
- Available now
- Rental Rate \$48/RSF/YR plus NNN (TBD)



57

TRANSIT SCORE



94

WALK SCORE



59

BIKE SCORE



28,152

TOTAL POPULATION



15,438

TOTAL HOUSEHOLDS



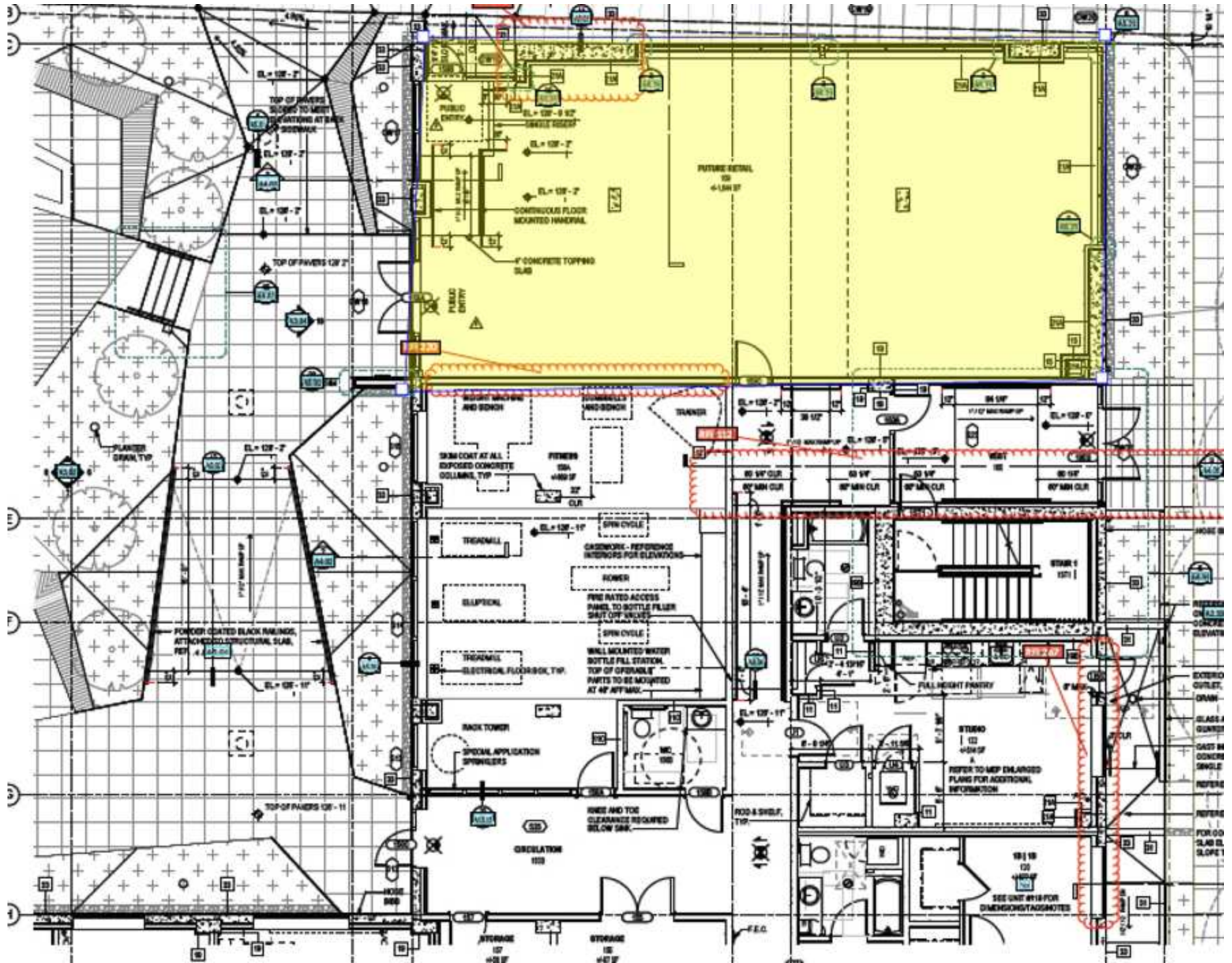
\$139,254

MEDIAN INCOME

\* Estimated 2022 demographics based on 1 mile radius



# SURREY ON MAIN





10777 MAIN STREET, BELLEVUE, WA 98004

# SURREY ON MAIN

