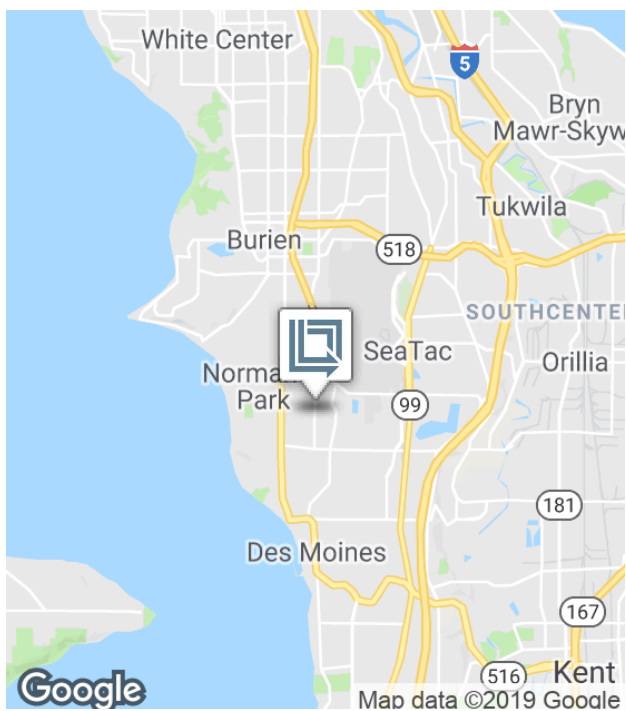


# 1,717 SF

Office Space For Lease

LBA Logistics 



## SeaTac Logistics Park 2, Bldg E

18900 8th Ave S, Suite 600, SeaTac, WA 98148 USA

- 1,717 square feet (office)
- Space is divisible
- Ample parking
- Located within 5 minutes of cargo entrance to SeaTac International Airport
- Spacious locations overlooking Mt. Rainier & airport runways

For more information:

**Arie Salomon, SIOR, CCIM**

+1 425 586 5636 • [asalomon@nai-psp.com](mailto:asalomon@nai-psp.com)

**Connor Powell**

+1 425 586 5642 • [cpowell@nai-psp.com](mailto:cpowell@nai-psp.com)

**NAI** Puget Sound  
Properties

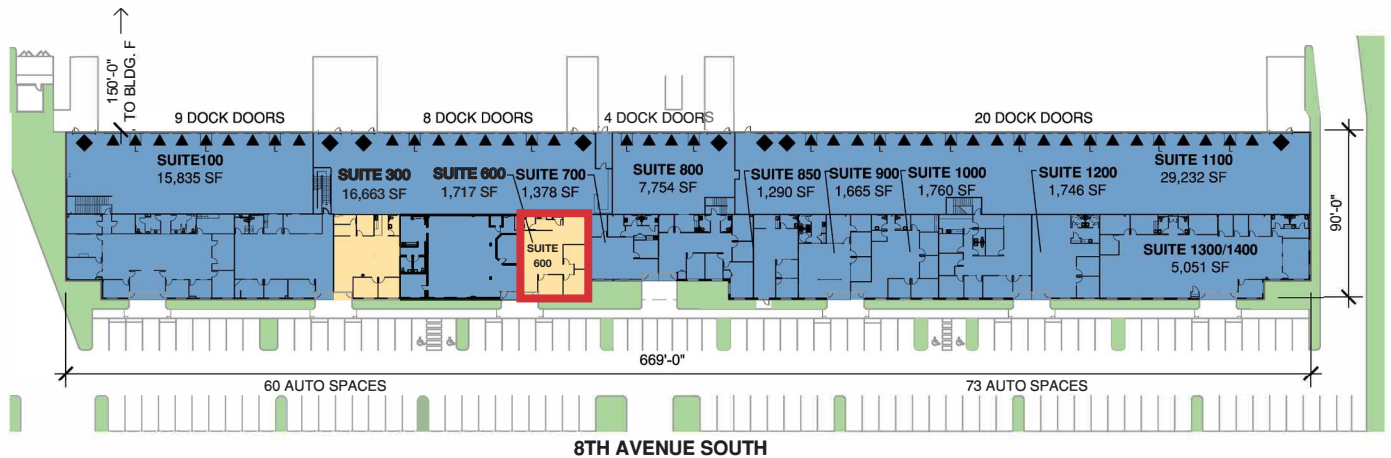
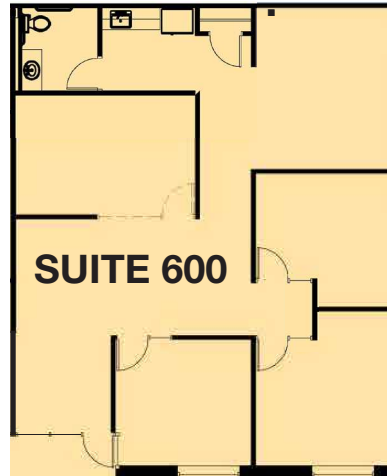
THE INFORMATION CONTAINED HEREIN HAS BEEN GIVEN TO US BY THE OWNER OF THE PROPERTY OR OTHER SOURCES WE DEEM RELIABLE. WE HAVE NO REASON TO DOUBT ITS ACCURACY, BUT WE DO NOT GUARANTEE IT. ALL INFORMATION SHOULD BE VERIFIED PRIOR TO PURCHASE OR LEASE.

10900 NE 8th Street, Suite 1500  
Bellevue, WA 98004  
+1 425 586 5600  
[nai-psp.com](http://nai-psp.com)

# 1,717 SF

Of f i c e Space For Lease

LBA Logistics 



 **SITE PLAN**  
NOT TO SCALE