

FOR LEASE

FREMONT PROFESSIONAL CENTER

753 N 35TH STREET, SEATTLE, WA 98103



OFFERING SUMMARY

| | |
|----------------|---------------------------------------|
| Available SF: | 180 - 1,123 SF |
| Lease Rate: | \$550.00 - 2,950.00 per month (Gross) |
| Lot Size: | 9,464 SF |
| Year Built: | 1931 |
| Building Size: | 13,948 SF |
| Renovated: | 1995 |
| Zoning: | NC39-75 (M1) |
| Market: | Seattle |
| Submarket: | Fremont |

PROPERTY OVERVIEW

Individual Offices with shared waiting rooms, common kitchenettes, elevator served.

PROPERTY HIGHLIGHTS

- Great Location
- Rare Individual Office Space
- Third Floor Balconies
- Perfect for Counselors, Therapist, Individual CPAs, Attorneys, etc.
- 97 Walk Score



DAVID HALL, CCIM, CPM CANDIDATE
206.381.3883 x107
david@corecommercialproperties.com

CORE Commercial Properties, Inc. | 10 East Allison Street | Seattle, WA 98102 | 206.381.3800 | corecommercialproperties.com

The information herein comes from sources deemed reliable but has not been independently verified by CORE Commercial Properties, Inc. No warranty or representation, expressed or implied is made as to the accuracy of the information herein, and it is submitted subject to errors, omissions, change of price, rental, or other conditions, withdrawal without notice, and to any special listing conditions, imposed by our principals.

FREMONT PROFESSIONAL CENTER

753 N 35TH STREET, SEATTLE, WA 98103



LEASE INFORMATION

| | | | |
|--------------|----------------|-------------|---------------------------------|
| Lease Type: | Gross | Lease Term: | Negotiable |
| Total Space: | 180 - 1,123 SF | Lease Rate: | \$550.00 - \$2,950.00 per month |

AVAILABLE SPACES

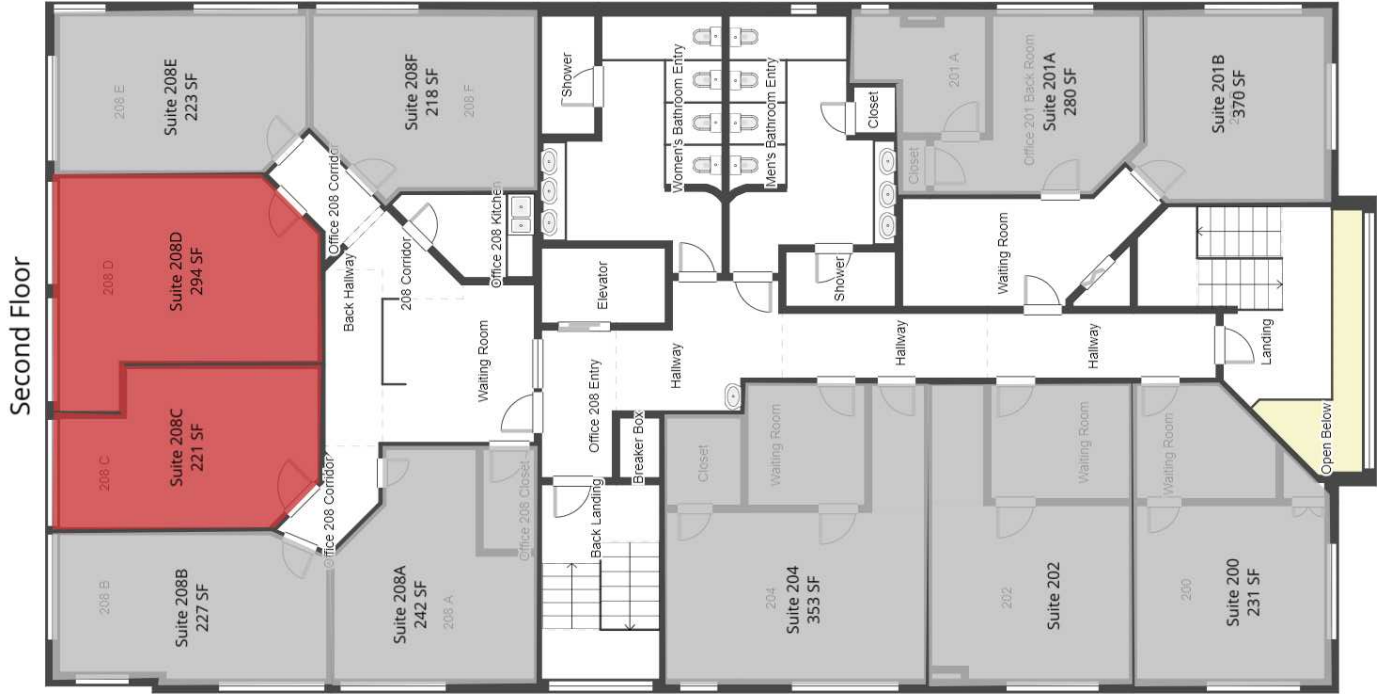
| SUITE | TENANT | SIZE | TYPE | RATE | DESCRIPTION |
|------------|-----------|--------|-------|-----------------|---|
| Suite 101A | Available | 180 SF | Gross | \$800 per month | Individual Office with shared waiting area. |
| Suite 105 | Available | 239 SF | Gross | \$850 per month | Individual Office with shared waiting area. |



DAVID HALL, CCIM, CPM CANDIDATE
 206.381.3883 x107
 david@corecommercialproperties.com

FREMONT PROFESSIONAL CENTER

753 N 35TH STREET, SEATTLE, WA 98103



LEASE INFORMATION

| | | | |
|--------------|----------------|-------------|---------------------------------|
| Lease Type: | Gross | Lease Term: | Negotiable |
| Total Space: | 180 - 1,123 SF | Lease Rate: | \$550.00 - \$2,950.00 per month |

AVAILABLE SPACES

| SUITE | TENANT | SIZE | TYPE | RATE | DESCRIPTION |
|------------|-----------|--------|-------|-----------------|---|
| Suite 208D | Available | 294 SF | Gross | \$900 per month | Large Individual Office with shared waiting area and kitchenette. |
| Suite 208C | Available | 221 SF | Gross | \$900 per month | Individual Office with shared waiting area. |



DAVID HALL, CCIM, CPM CANDIDATE
 206.381.3883 x107
 david@corecommercialproperties.com

FREMONT PROFESSIONAL CENTER

753 N 35TH STREET, SEATTLE, WA 98103



LEASE INFORMATION

| | | | |
|--------------|----------------|-------------|---------------------------------|
| Lease Type: | Gross | Lease Term: | Negotiable |
| Total Space: | 180 - 1,123 SF | Lease Rate: | \$550.00 - \$2,950.00 per month |

AVAILABLE SPACES

| SUITE | TENANT | SIZE | TYPE | RATE | DESCRIPTION |
|-----------|-----------|----------|-------|-------------------|---|
| Suite 308 | Available | 379 SF | Gross | \$975 per month | Corner Office with lots of windows and west facing balcony. |
| Suite 307 | Available | 188 SF | Gross | \$550 per month | Single office with shared waiting room and balcony. |
| Suite 311 | Available | 1,123 SF | Gross | \$2,950 per month | Long western window line with balcony, shared waiting room and kitchenette. |



DAVID HALL, CCIM, CPM CANDIDATE
 206.381.3883 x107
 david@corecommercialproperties.com

FREMONT PROFESSIONAL CENTER

753 N 35TH STREET, SEATTLE, WA 98103



DAVID HALL, CCIM, CPM CANDIDATE
206.381.3883 x107
david@corecommercialproperties.com

FREMONT PROFESSIONAL CENTER

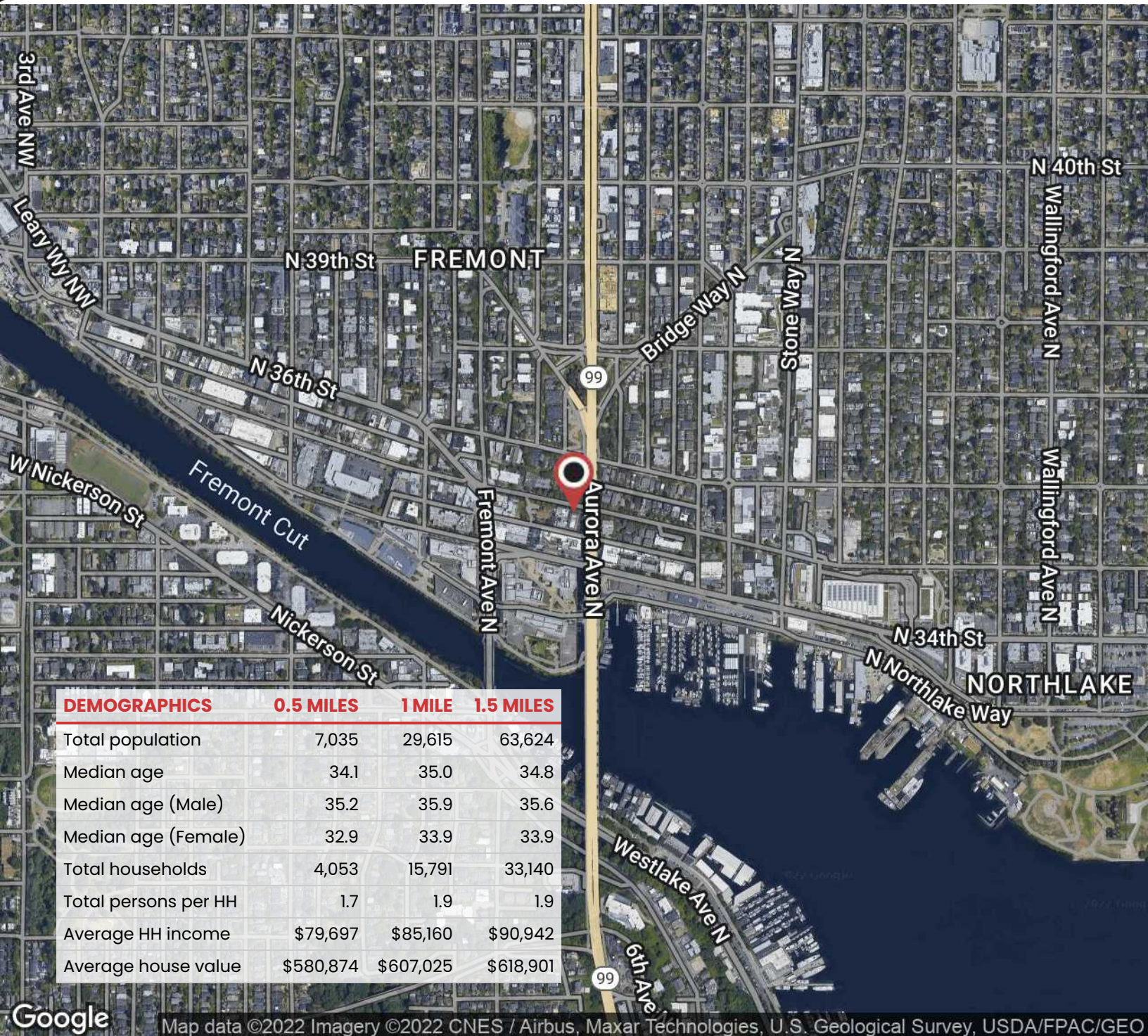
753 N 35TH STREET, SEATTLE, WA 98103



DAVID HALL, CCIM, CPM CANDIDATE
206.381.3883 x107
david@corecommercialproperties.com

FREMONT PROFESSIONAL CENTER

753 N 35TH STREET, SEATTLE, WA 98103



DAVID HALL, CCIM, CPM CANDIDATE
 206.381.3883 x107
 david@corecommercialproperties.com