

Office for Sublease ACOSTA BUILDING

13037 NE Bel-Red Road, Bellevue, WA 98005



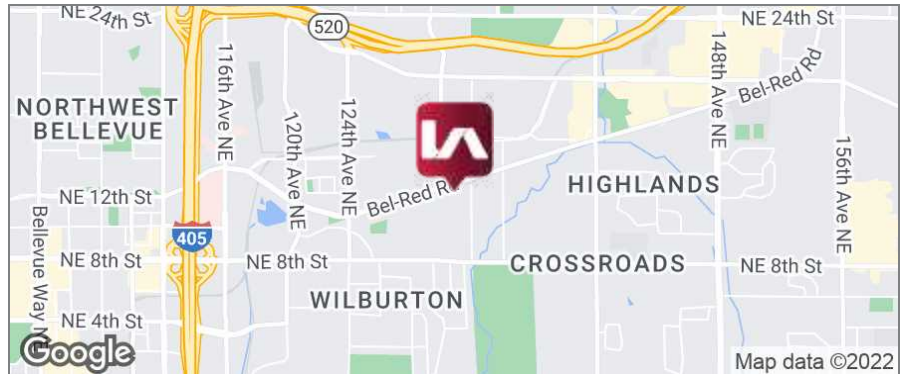
LISTING INFORMATION

AVAILABLE SF:	10,513 SF
LEASE RATE:	Call Broker for Rates
NNN EXPENSES:	\$10.00/PSF/Yr
SUBLEASE EXPIRES:	March 31, 2025
YEAR BUILT:	1990
TOTAL BUILDING SF:	19,667 SF
ZONING:	BR-ORT

COMMENTS

The Acosta Building sublease offers a high-end, turn-key full floor opportunity with ample parking, frontage, and signage off Bel-Red Road.

Located minutes from I-405 & 520, under 5 minutes from the planned Wilburton & Spring District Light Rail Stations and other public transportation, this building provides easy access to many local restaurants and other amenities in downtown Bellevue, Kirkland, and Redmond.



DEMOGRAPHICS

	1 MILE	2 MILES	3 MILES
Total Households	4,120	25,467	47,667
Total Population	9,905	51,574	104,040
Average HH Income	\$173,660	\$147,150	\$161,052

CONTACT

Carson Scott

cscott@lee-associates.com

D 425.818.1538

Jim Reed, SIOR

jreed@lee-associates.com

D 206.210.5202

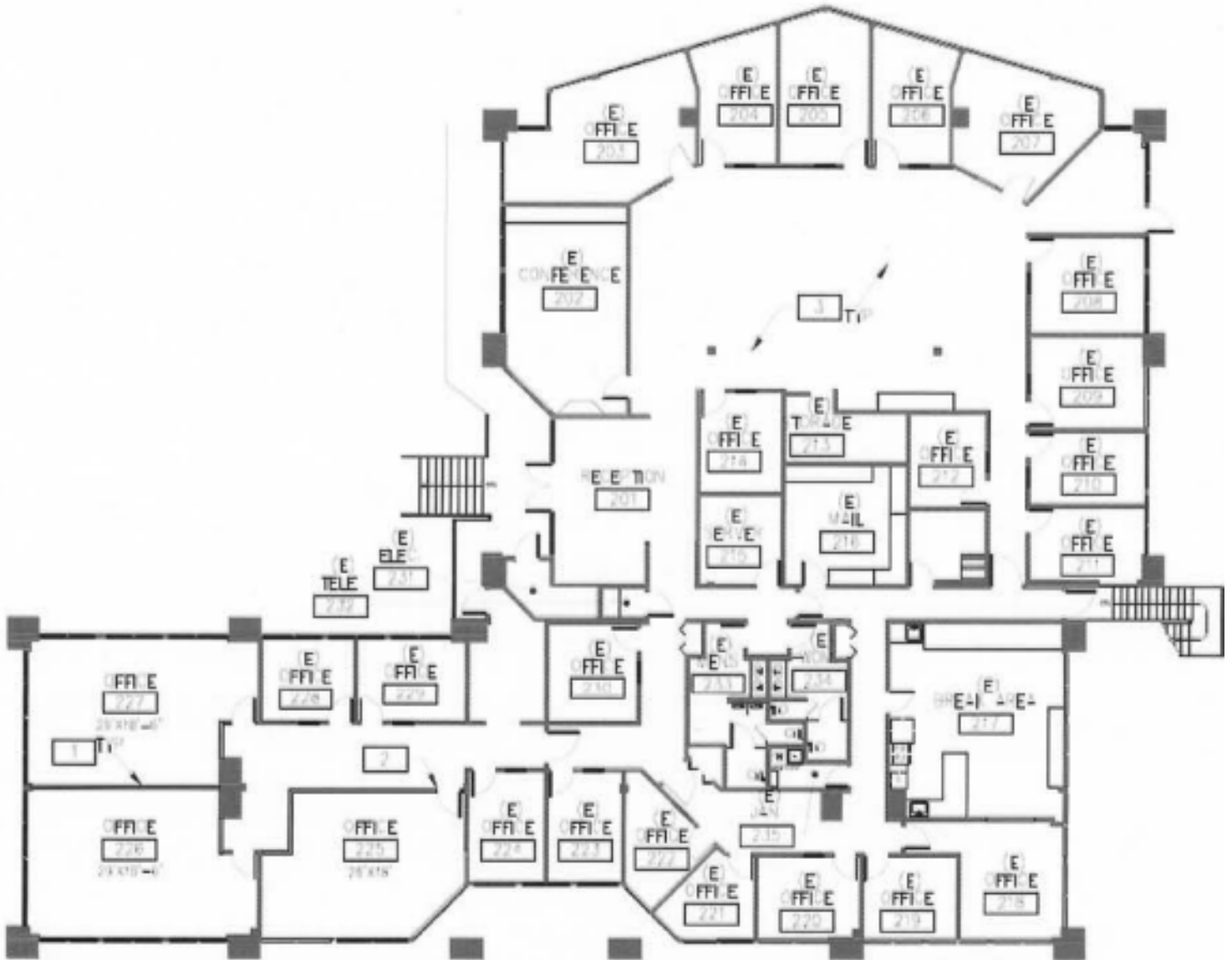
We obtained the information above from sources we believe to be reliable. However, we have not verified its accuracy and make no guarantee, warranty or representation about it. It is submitted subject to the possibility of errors, omissions, change of price, rental or other conditions, prior sale, lease or financing, or withdrawal without notice. We include projections, opinions, assumptions or estimates for example only, and they may not represent current or future performance of the property. You and your tax and legal advisors should conduct your own investigation of the property and transaction.

Office for Sublease ACOSTA BUILDING

13037 NE Bel-Red Road, Bellevue, WA 98005



COMMERCIAL REAL ESTATE SERVICES



CONTACT

Carson Scott

cscott@lee-associates.com

D 425.818.1538

Jim Reed, SIOR

jreed@lee-associates.com

D 206.210.5202

We obtained the information above from sources we believe to be reliable. However, we have not verified its accuracy and make no guarantee, warranty or representation about it. It is submitted subject to the possibility of errors, omissions, change of price, rental or other conditions, prior sale, lease or financing, or withdrawal without notice. We include projections, opinions, assumptions or estimates for example only, and they may not represent current or future performance of the property. You and your tax and legal advisors should conduct your own investigation of the property and transaction.

Office for Sublease ACOSTA BUILDING

13037 NE Bel-Red Road, Bellevue, WA 98005



CONTACT

Carson Scott

cscott@lee-associates.com

D 425.818.1538

Jim Reed, SIOR

jreed@lee-associates.com

D 206.210.5202

We obtained the information above from sources we believe to be reliable. However, we have not verified its accuracy and make no guarantee, warranty or representation about it. It is submitted subject to the possibility of errors, omissions, change of price, rental or other conditions, prior sale, lease or financing, or withdrawal without notice. We include projections, opinions, assumptions or estimates for example only, and they may not represent current or future performance of the property. You and your tax and legal advisors should conduct your own investigation of the property and transaction.