

US BANK CENTER

1420 5th Avenue, Suite 1900, Seattle, WA 98101

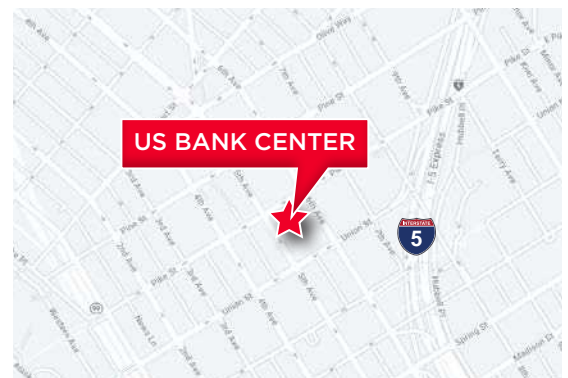
22,735 SF AVAILABLE

FOR SUBLEASE



PROPERTY HIGHLIGHTS

- Ideal CBD location near retail, restaurants, freeway, and public transit.
- On-site amenities include fitness center, secure bicycle parking, EV charging station, and conference facilities.
- Ground floor of building currently under renovation with planned improvements to include 3-story central hall, redesigned lobby, and amenity spaces.



MATT CHRISTIAN

+1 206 521 0254

matt.christian@cushwake.com

ROBYN HORN

+1 206 521 0243

robyn.horn@cushwake.com



**CUSHMAN &
WAKEFIELD**

cushmanwakefield.com

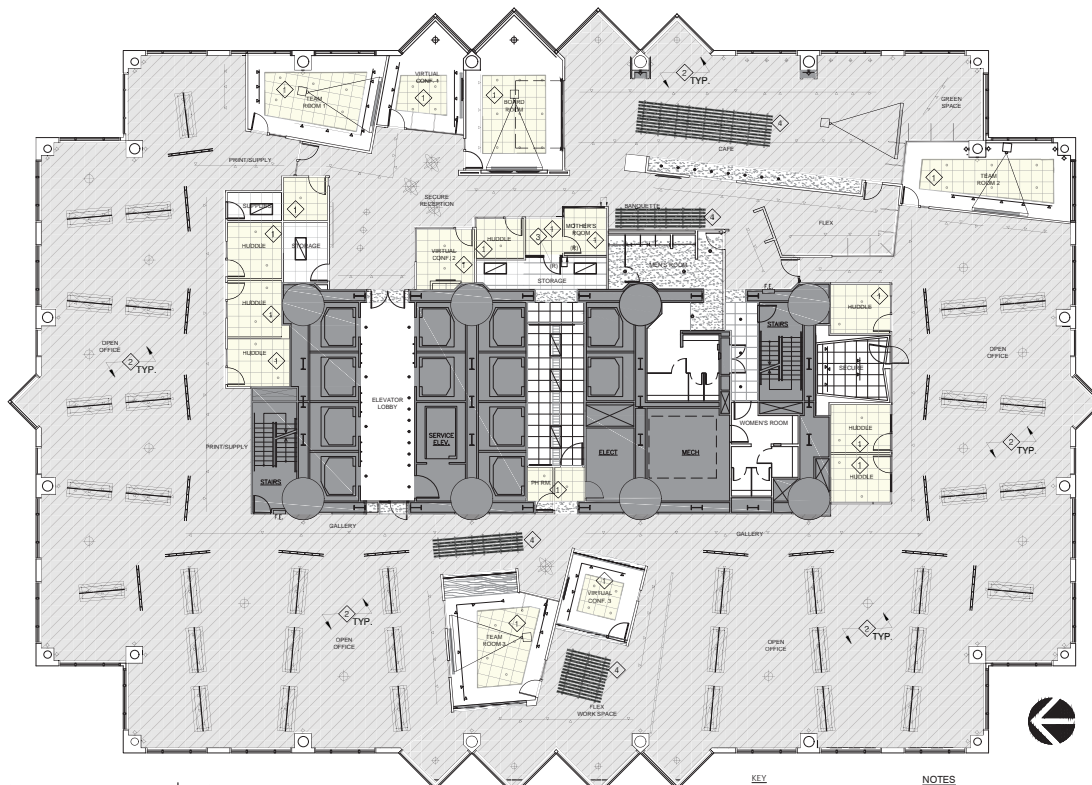
FOR SUBLEASE

1420 5th Ave, Suite 1900

Seattle, WA 98101

22,735 RSF AVAILABLE

FLOOR PLAN



SPACE DETAILS

- Plug & play sublease space with master lease term through 7/31/2026
- Primarily open layout with kitchen/break area, team rooms, mother's room, and storage area included in space
- Call for rates



**CUSHMAN &
WAKEFIELD**

cushmanwakefield.com

FOR SUBLEASE

1420 5th Ave, Suite 1900
Seattle, WA 98101

22,735 RSF AVAILABLE

PROPERTY PHOTOS



**CUSHMAN &
WAKEFIELD**

cushmanwakefield.com