



BUILD-TO-SUIT



INDUSTRIAL



49.69 ACRE SITE



Up to 800,000 SF Available

1406 - 1620 West Reynolds Avenue, Centralia, WA 98531

## Skookumchuk Commerce Center

- Class A industrial project
- Q4 2023 delivery
- 49.69 acre site
- I-5 visibility
- Immediately adjacent to exit 82
- Midpoint from Seattle and Portland
- Rail and all utilities available
- Mileage to major cities:
  - Seattle - 90 miles
  - Tacoma - 58 miles
  - Olympia - 28 miles
  - Portland - 92 miles
- Very business friendly city of Centralia



PANATTONI®



**Dave Douglas, SIOR, CCIM**  
Partner | 253.203.1326  
ddouglas@nai-psp.com

**Arie Salomon, SIOR, CCIM**  
Partner | 253.203.1326  
ddouglas@nai-psp.com

**Kyle Schipper**  
Vice President | 253.203.1320  
kschipper@nai-psp.com



BUILD-TO-SUIT



INDUSTRIAL



49.69 ACRE SITE



**Dave Douglas, SIOR, CCIM**  
Partner | 253.203.1326  
ddouglas@nai-psp.com

**Arie Salomon, SIOR, CCIM**  
Partner | 253.203.1326  
ddouglas@nai-psp.com

**Kyle Schipper**  
Vice President | 253.203.1320  
kschipper@nai-psp.com



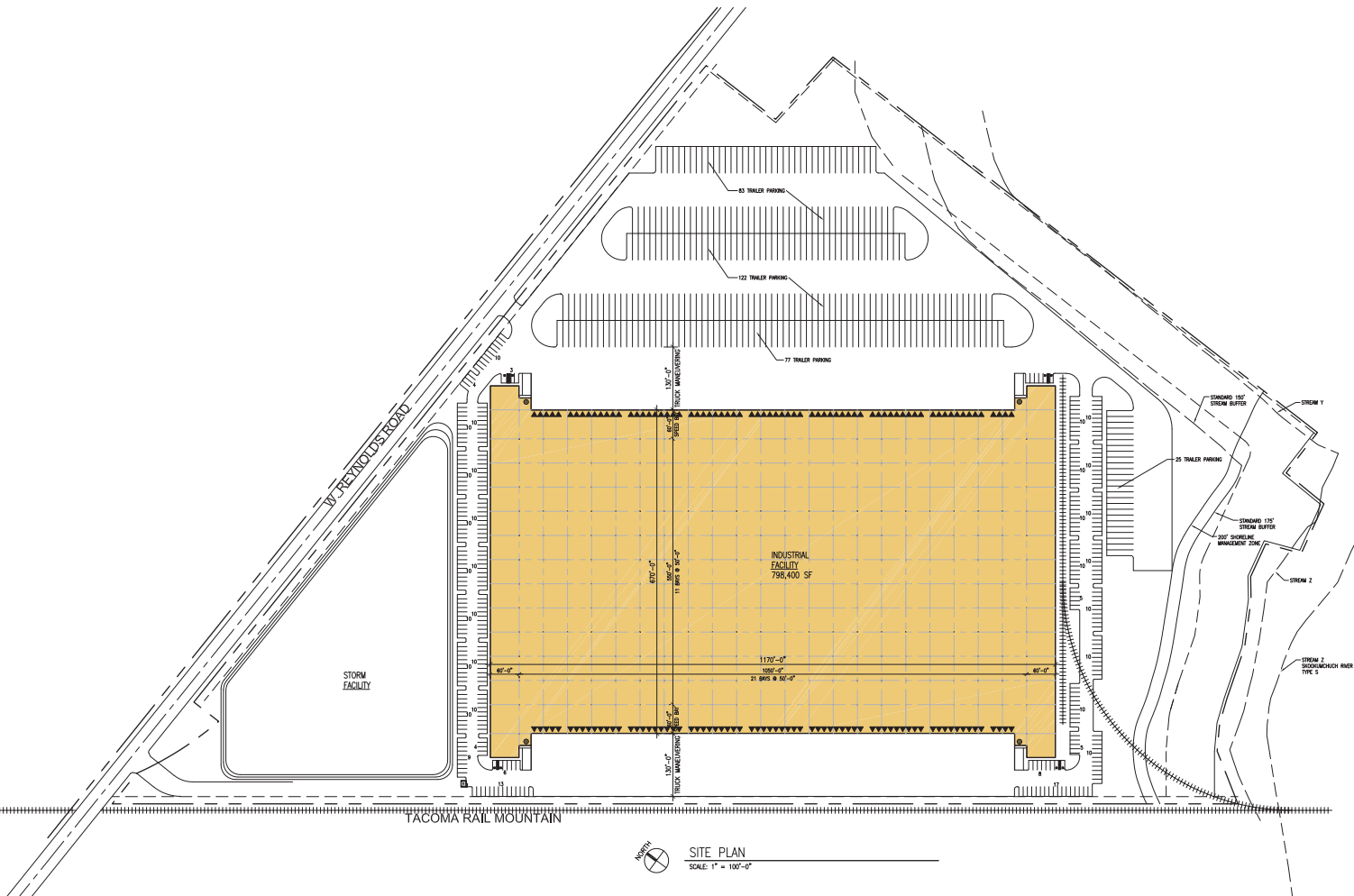
**BUILD-TO-SUIT**



**INDUSTRIAL**



**49.69 ACRE SITE**



## Option 1



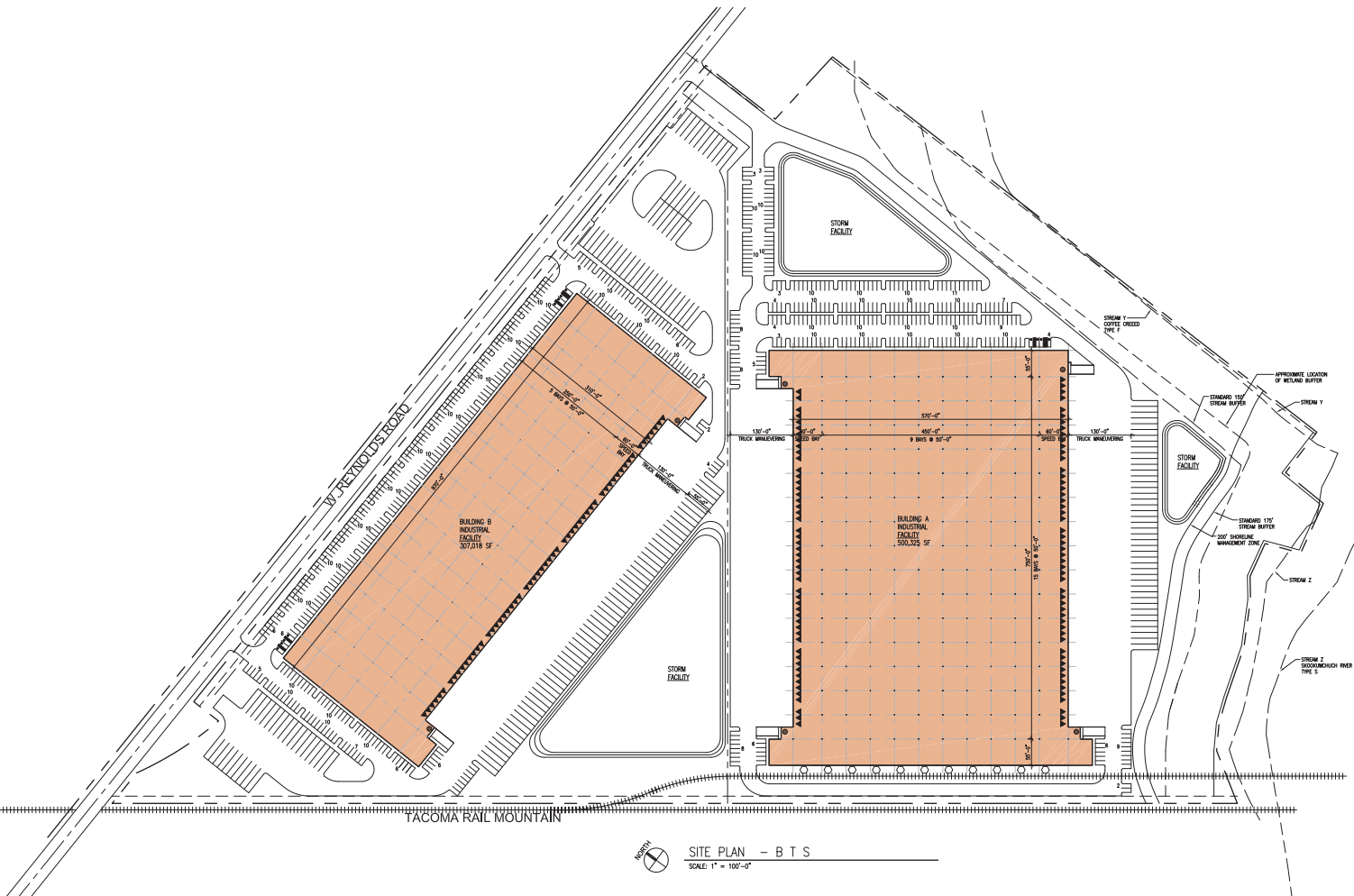
**Dave Douglas, SIOR, CCIM**  
 Partner | 253.203.1326  
 ddouglas@nai-psp.com

**Arie Salomon, SIOR, CCIM**  
 Partner | 253.203.1326  
 ddouglas@nai-psp.com

**Kyle Schipper**  
 Vice President | 253.203.1320  
 kschipper@nai-psp.com



SKOOCKUMCHUCK COMMERCE CENTER



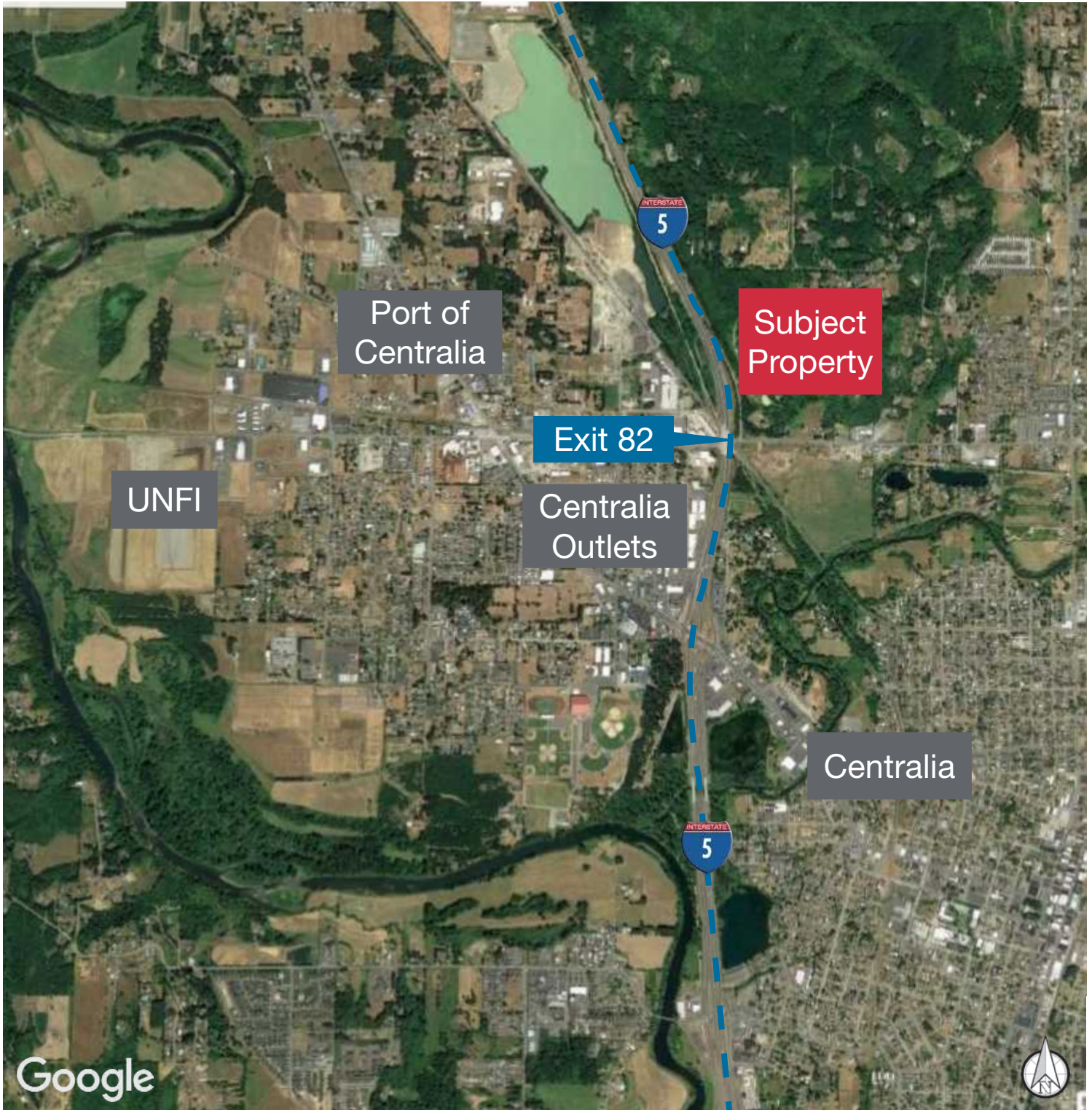
Option 2



**Dave Douglas, SIOR, CCIM**  
 Partner | 253.203.1326  
 ddouglas@nai-psp.com

**Arie Salomon, SIOR, CCIM**  
 Partner | 253.203.1326  
 ddouglas@nai-psp.com

**Kyle Schipper**  
 Vice President | 253.203.1320  
 kschipper@nai-psp.com



**Dave Douglas, SIOR, CCIM**  
Partner | 253.203.1326  
ddouglas@nai-psp.com

**Arie Salomon, SIOR, CCIM**  
Partner | 253.203.1326  
ddouglas@nai-psp.com

**Kyle Schipper**  
Vice President | 253.203.1320  
kschipper@nai-psp.com